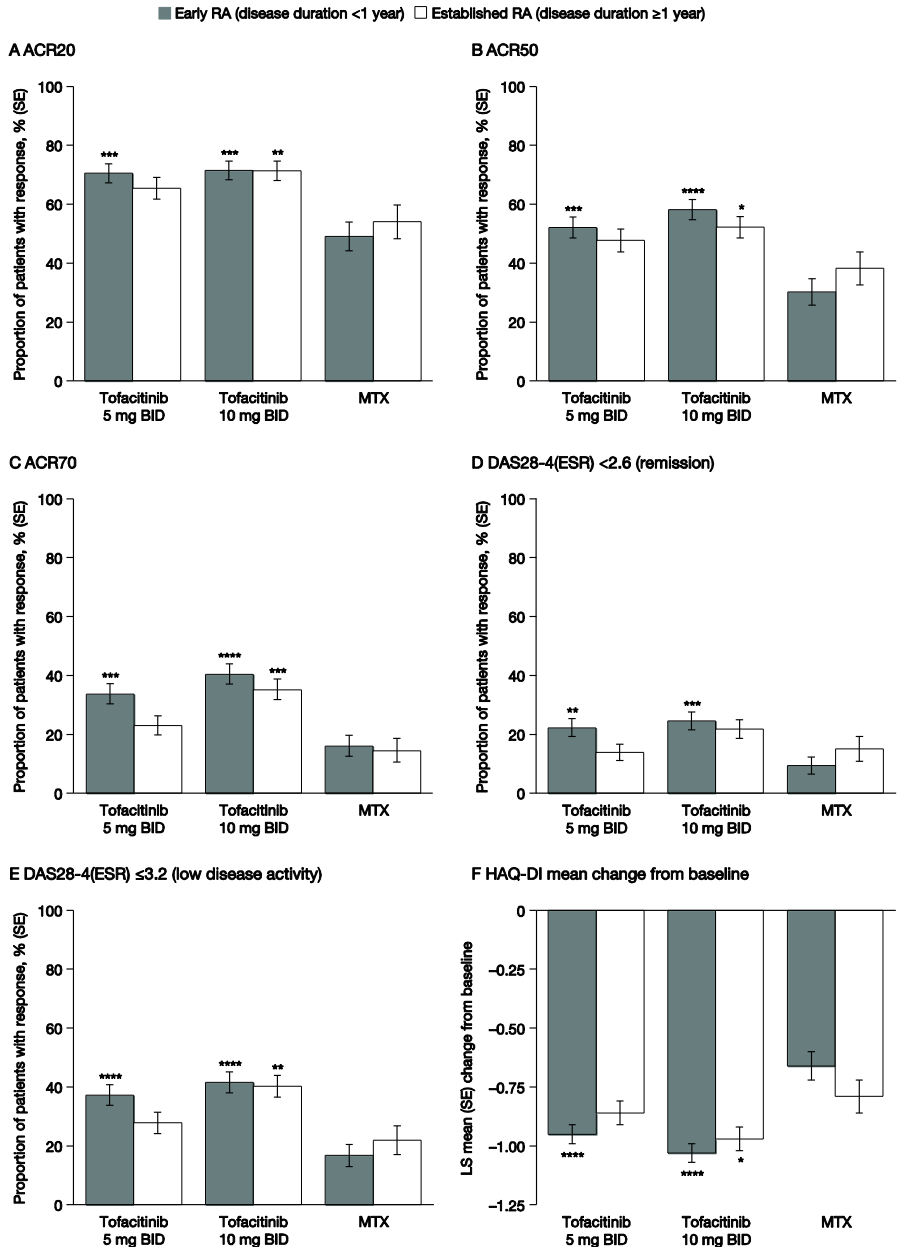


**SUPPLEMENTARY MATERIAL**

**Supplementary Figure 1 Clinical response in patients with early and established RA at Month 12.**

**Additional Figure 1**



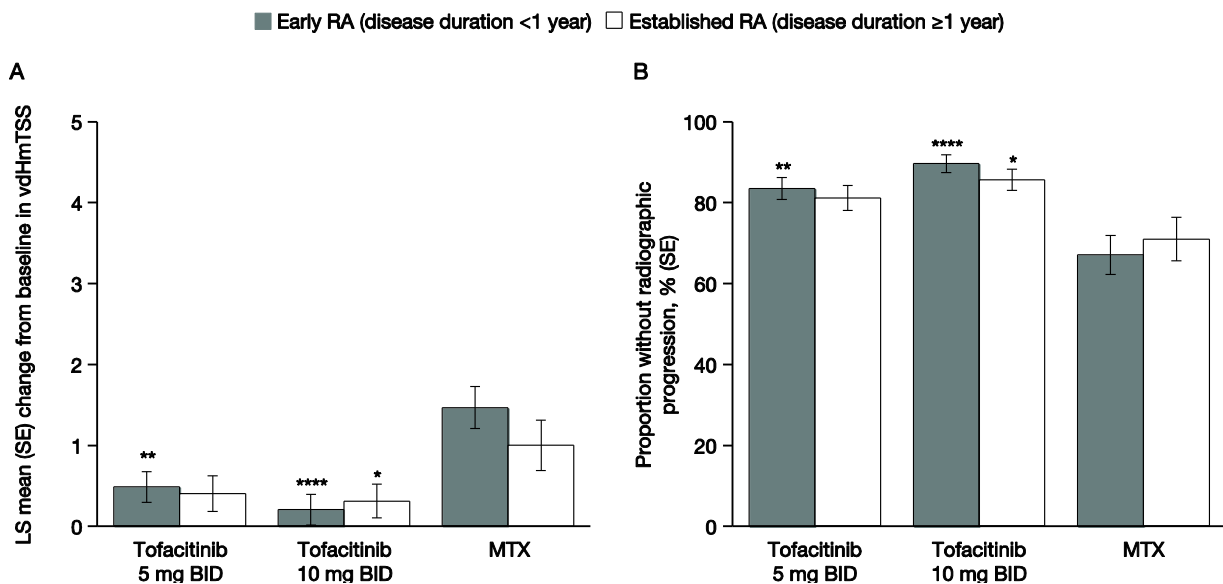
\*p<0.05; \*\*p<0.01; \*\*\*p<0.001; \*\*\*\*p<0.0001 versus MTX within disease duration category.

Early and established RA are defined as disease duration <1 year and ≥1 year, respectively.

ACR, American College of Rheumatology response criteria; BID, twice daily; DAS28-4(ESR), Disease Activity Score in 28 joints, erythrocyte sedimentation rate; HAQ-DI, Health Assessment Questionnaire-Disability Index; MTX, methotrexate; RA, rheumatoid arthritis; SE, standard error.

**Supplementary Figure 2** Radiographic parameters assessed at Month 12 in patients with early RA and established RA.

**Additional Figure 2**



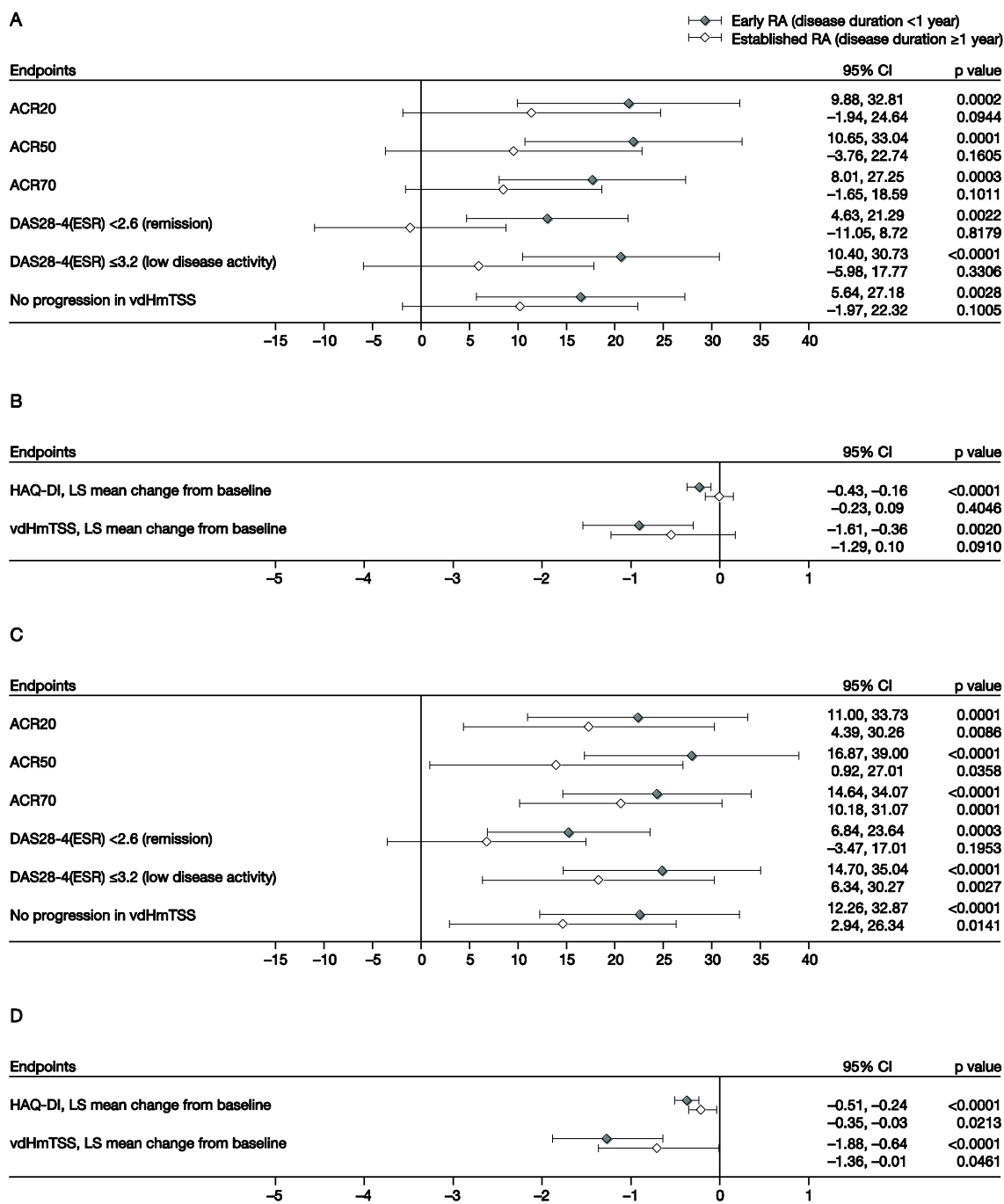
\*p<0.05; \*\*p<0.01; \*\*\*p<0.001; \*\*\*\*p<0.0001 versus MTX within disease duration category.

Early and established RA are defined as disease duration <1 year and ≥1 year, respectively. The proportion of patients without radiographic progression was determined based on a change in vdHmTSS ≤0.5.

BID, twice daily; LS, least squares; MTX, methotrexate; RA, rheumatoid arthritis; SE, standard error; vdHmTSS, van der Heijde modification of the total Sharp score.

**Supplementary Figure 3** Treatment differences versus MTX in patients with early and established RA at Month 12.

Additional Figure 3



A–B tofacitinib 5 mg BID; C–D tofacitinib 10 mg BID.

Early and established RA are defined as disease duration <1 year and ≥1 year, respectively.

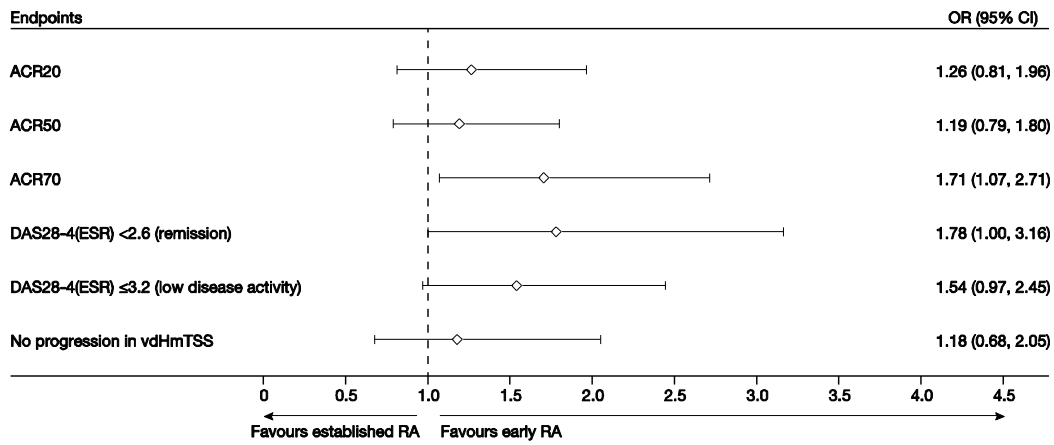
ACR, American College of Rheumatology response criteria; BID, twice daily; CI, confidence

interval; DAS28-4(ESR), Disease Activity Score in 28 joints, erythrocyte sedimentation rate; HAQ-DI, Health Assessment Questionnaire-Disability Index; LS, least squares; MTX, methotrexate; RA, rheumatoid arthritis; vdHmTSS, van der Heijde modification of the total Sharp score.

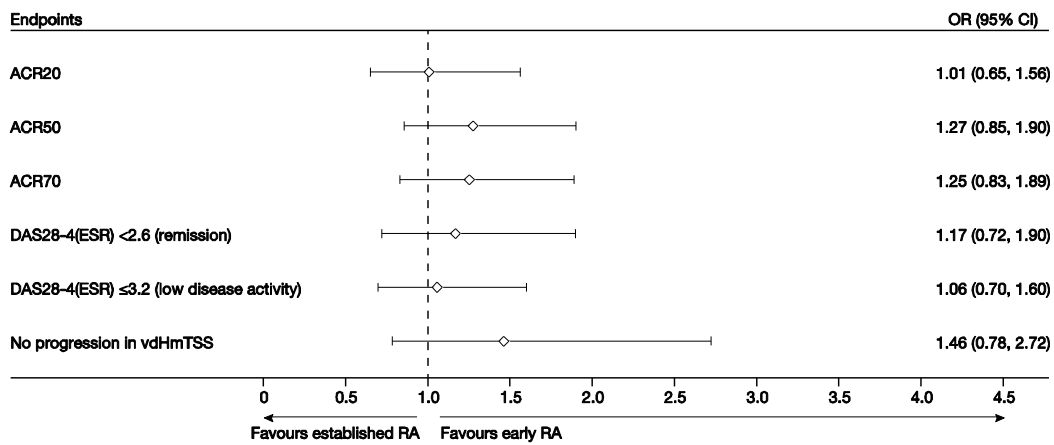
**Supplementary Figure 4** Clinical and radiographic endpoints ORs at Month 12 for patients with early and established RA.

Additional Figure 4

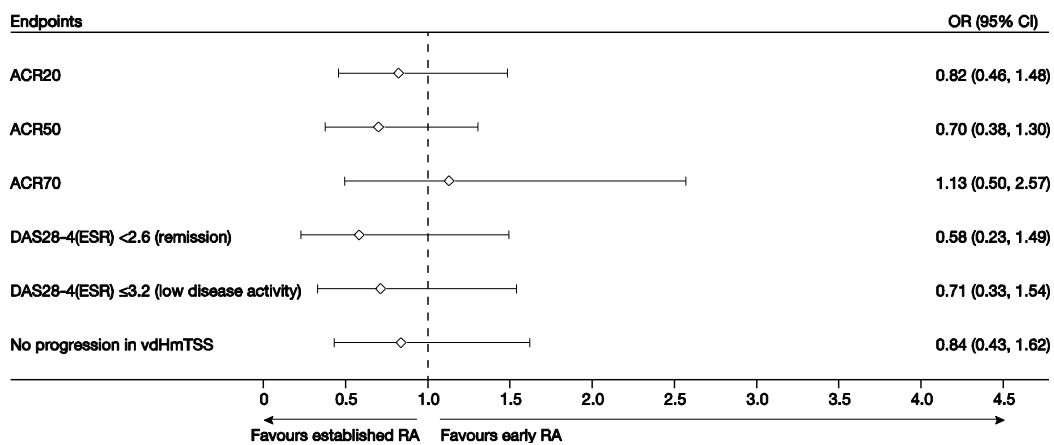
A



B



C



A tofacitinib 5 mg BID; B tofacitinib 10 mg BID; C MTX.

Early and established RA are defined as disease duration  $<1$  year and  $\geq 1$  year, respectively.

ACR, American College of Rheumatology response criteria; BID, twice daily; CI, confidence interval; DAS28-4(ESR), Disease Activity Score in 28 joints, erythrocyte sedimentation rate; MTX, methotrexate; OR, odds ratio; RA, rheumatoid arthritis; vdHmTSS, van der Heijde modification of the total Sharp score.

**Supplementary Table 1** Mean (SD) values for clinical and radiographic efficacy endpoints at Months 12 and 24.

Duration of RA	Tofacitinib 5 mg BID		Tofacitinib 10 mg BID		MTX	
	Early	Established	Early	Established	Early	Established
<b>DAS28-4(ESR)</b>						
Month 12	3.52 (1.25)	3.91 (1.41)	3.26 (1.30)	3.52 (1.28)	4.24 (1.34)	4.20 (1.45)
Month 24	3.19 (1.21)	3.76 (1.25)	3.16 (1.24)	3.45 (1.35)	3.93 (1.27)	4.09 (1.45)
<b>HAQ-DI</b>						
Month 12	0.51 (0.53)	0.81 (0.66)	0.46 (0.54)	0.58 (0.58)	0.78 (0.53)	0.81 (0.64)
Month 24	0.44 (0.51)	0.77 (0.66)	0.41 (0.53)	0.56 (0.59)	0.68 (0.57)	0.91 (0.73)
<b>vdHmTSS</b>						
Month 12	7.56 (14.01)	33.03 (51.51)	5.26 (9.78)	31.93 (51.08)	9.02 (15.47)	28.45 (40.49)
Month 24	8.31 (15.77)	33.25 (51.64)	5.48 (9.87)	32.00 (51.13)	10.18 (17.64)	29.12 (40.74)

Early RA was defined as disease duration <1 year, and established RA was defined as disease duration ≥1 year.

BID, twice daily; DAS28-4(ESR), Disease Activity Score in 28 joints, erythrocyte sedimentation rate; HAQ-DI, Health Assessment Questionnaire-Disability Index; MTX, Methotrexate; RA, rheumatoid arthritis; SD, standard deviation; vdHmTSS, van der Heijde modification of the total Sharp score.