

Supplementary Materials: Subinhibitory Concentrations of Allicin Decrease Uropathogenic *Escherichia coli* (UPEC) Biofilm Formation, Adhesion Ability, and Swimming Motility

Xiaolong Yang, Kaihui Sha, Guangya Xu, Hanwen Tian, Xiaoying Wang, Shanze Chen, Yi Wang, Jingyu Li, Junli Chen and Ning Huang

Table S1. Primer sequences.

Genes	Primer Sequences (5'–3')
16s forward	CAAGGGCACAACCTCCAAAT
16s reverse	GTGTAGCGGTGAAATGCGTAGAG
<i>fimH</i> forward	TTTGCGACAGACCAACAAC
<i>fimH</i> reverse	GACATCACGAGCAGAAGCAT
<i>uvrY</i> forward	TCAGACAAACTGGCAAATGG
<i>uvrY</i> reverse	CTATTCAGGGCAGCGTTACA
<i>csrA</i> forward	CCTGGATACGCTGGTAGAT
<i>csrA</i> reverse	TCGTCGAGTTGGTGAGAC

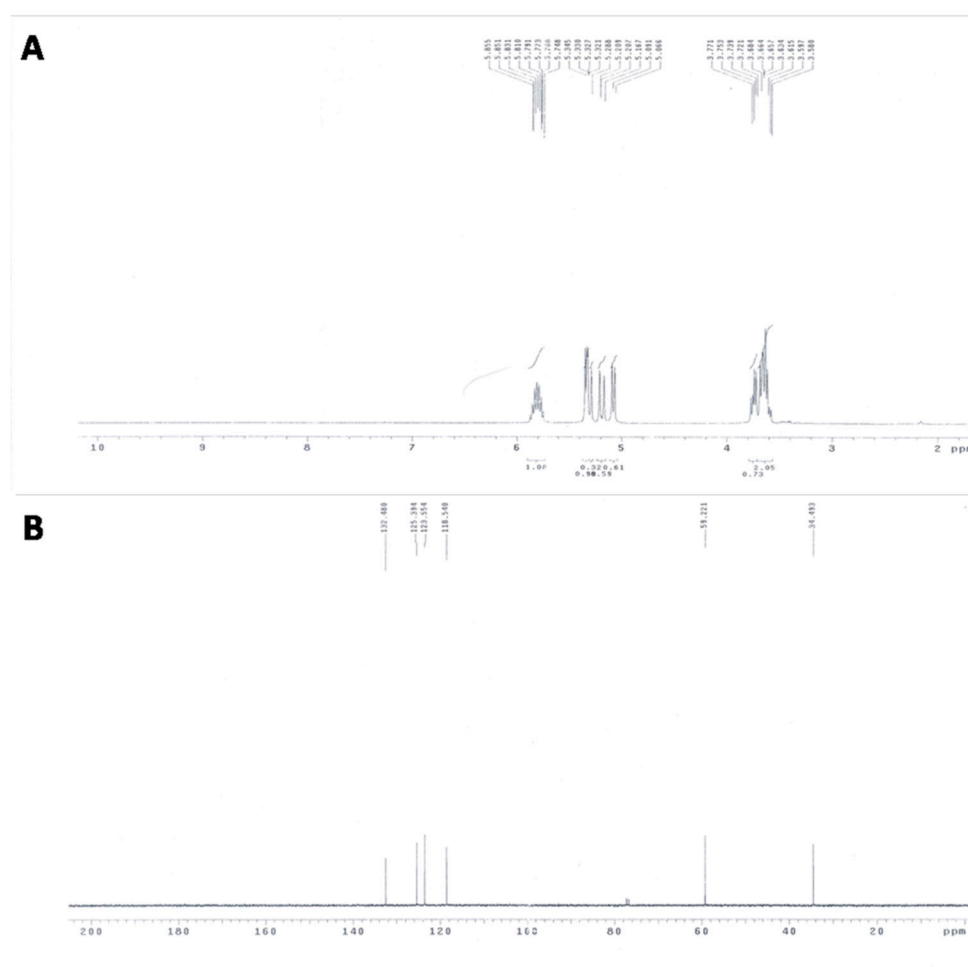


Figure S1. ^1H NMR (A) and ^{13}C NMR (B) spectra of allicin. (A) ^1H NMR (400 MHz, CDCl_3) δ 3.58–3.77 (m, 4H), 5.08 (d, $J = 10$ Hz, 1H), 5.18 (d, $J = 16$ Hz), 5.33 (m, 2H), 5.81 (m, 2H) ppm and (B) ^{13}C NMR (150 MHz, CDCl_3) δ 34.49, 59.22, 118.54, 123.55, 125.39, 132.48 ppm.

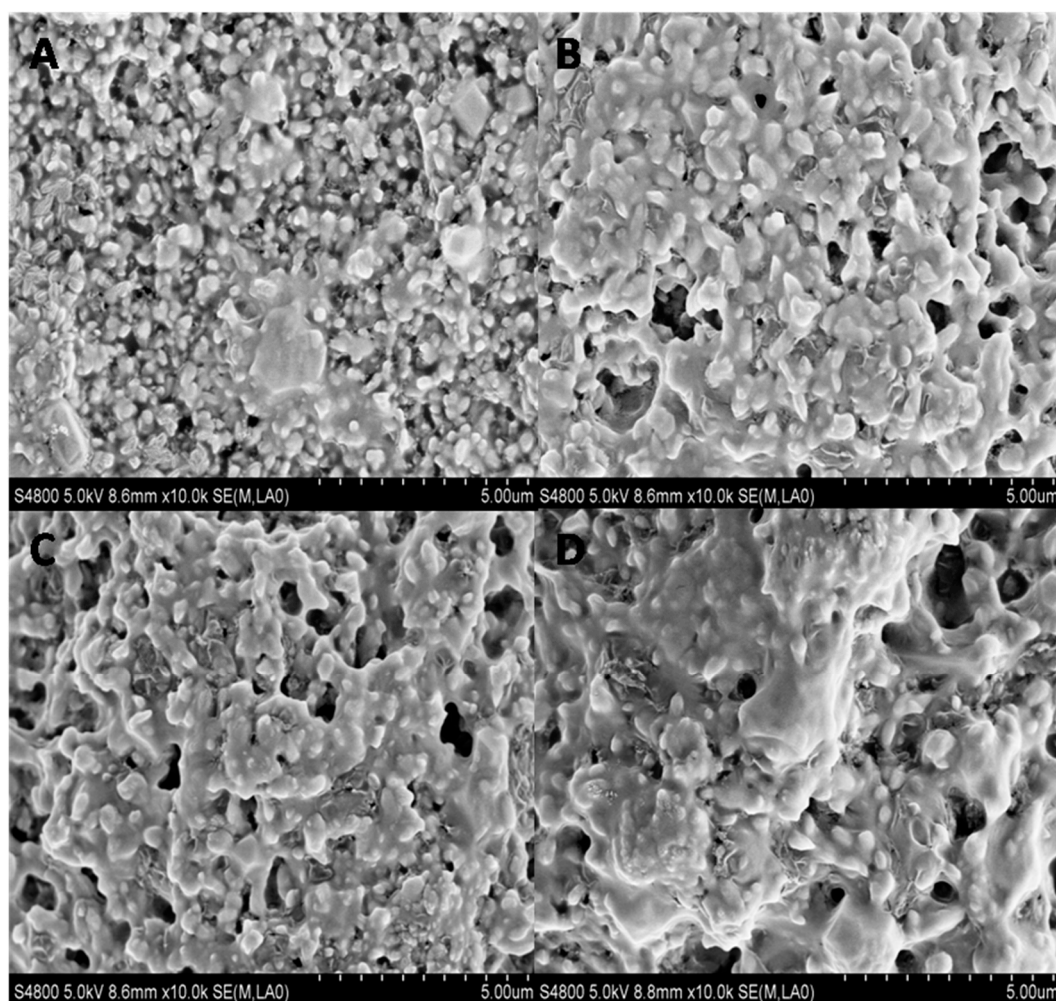


Figure S2. Scanning electron microscopy pictures of growing uropathogenic *Escherichia coli* (UPEC) J96 biofilm. Biofilm architecture was investigated via SEM in the presence or absence of alliin. The images were untreated control (A) or treated with 12 µg/mL (B), 25 µg/mL (C), and 50 µg/mL (D) of alliin, respectively.