

Supplementary Materials: Leptin Receptor Metabolism Disorder in Primary Chondrocytes from Adolescent Idiopathic Scoliosis Girls

Yun-Jia Wang, Hong-Gui Yu, Zhen-Hai Zhou, Qiang Guo, Long-Jie Wang and Hong-Qi Zhang

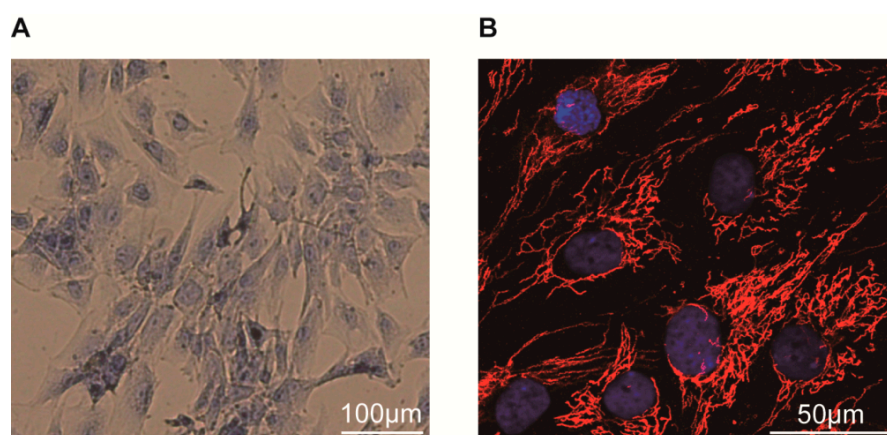


Figure S1. Identification of primary chondrocytes isolated from the human facet joint. (A) Cell morphology and biological characteristics were determined by toluidine blue staining. Scale bar = 100 μm ; (B) Collagen II expression was shown by immunofluorescence staining. Scale bar = 50 μm .

Table S1. Anthropometrics and total serum leptin levels in the AIS patients.

	AIS		
	AIS ($n = 31$)	Suigical ($n = 15$)	Non-Surgical ($n = 16$)
	Mean \pm SD	Mean \pm SD	Mean \pm SD
Age	12.81 \pm 1.82	13.20 \pm 1.47	12.44 \pm 2.06
Weight (kg)	40.90 \pm 4.56	40.93 \pm 6.55	41.81 \pm 3.99
Height (cm)	152.06 \pm 7.11	151.07 \pm 6.37	153.00 \pm 7.83
BMI (kg/m^2)	17.66 \pm 1.15	17.91 \pm 2.46	17.84 \pm 0.74
Cobb angle ($^\circ$)	39.90 \pm 14.95	53.47 \pm 7.68	27.19 \pm 5.94 *
Leptin levels (ng/mL)	7.62 \pm 2.80	7.94 \pm 3.87	7.69 \pm 3.38

*: $p < 0.05$ vs. the suigical group (Independent-samples t test); BMIs were calculated by dividing the body weight by the squared arm span (m^2); Abbreviations: AIS, adolescent idiopathic scoliosis; BMI, body mass index.

Table S2. Information of the control patients (for primary chondrocytes isolated).

Patient No.	Dignosis	Age	Weight (kg)	Height (cm)	BMI (kg/m^2)	Leptin Level (ng/mL)
1	Multiple trauma	13	40	147	18.51	7.40
2	L1 fracture	14	45	150	20	10.00
3	Multiple trauma	13	38	143	18.58	6.37
4	Multiple trauma	15	47	155	19.56	8.13
5	LDH	14	44	157	17.85	8.53
6	LDH	15	52	160	20.31	9.35
7	LDH	14	49	150	21.78	6.78
8	spinal tuberculosis	13	38	148	17.35	8.13

BMIs were calculated by dividing the body weight by the squared arm span (m^2); Abbreviations: LDH, lumbar disc herniation; BMI, body mass index.