

Supplementary Materials: Structural Analysis of Hand Drawn Bumblebee *Bombus terrestris* Silk

Andrea L. Woodhead, Tara D. Sutherland and Jeffrey S. Church

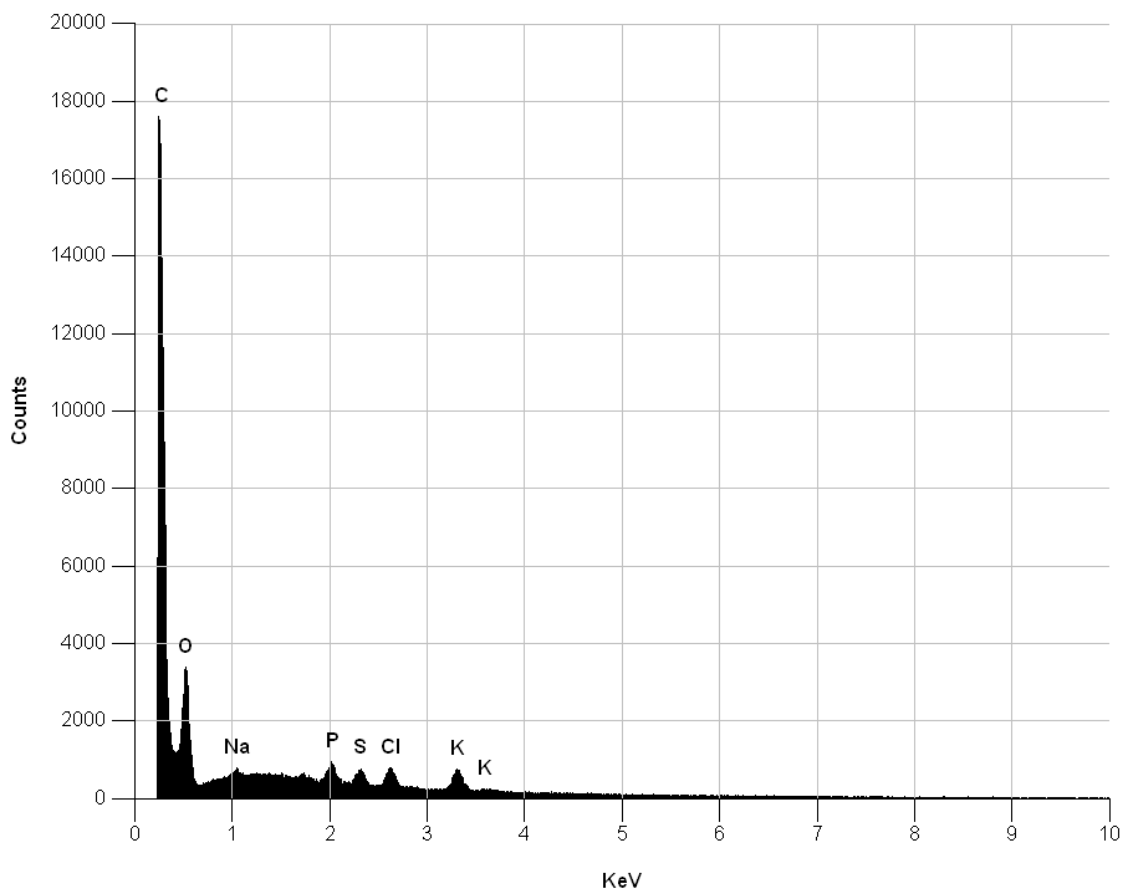


Figure S1. EDX spectrum obtained from the *B. terrestris* silk fibre hand drawn at 0.14 cm/s shown as Figure 1a,b.

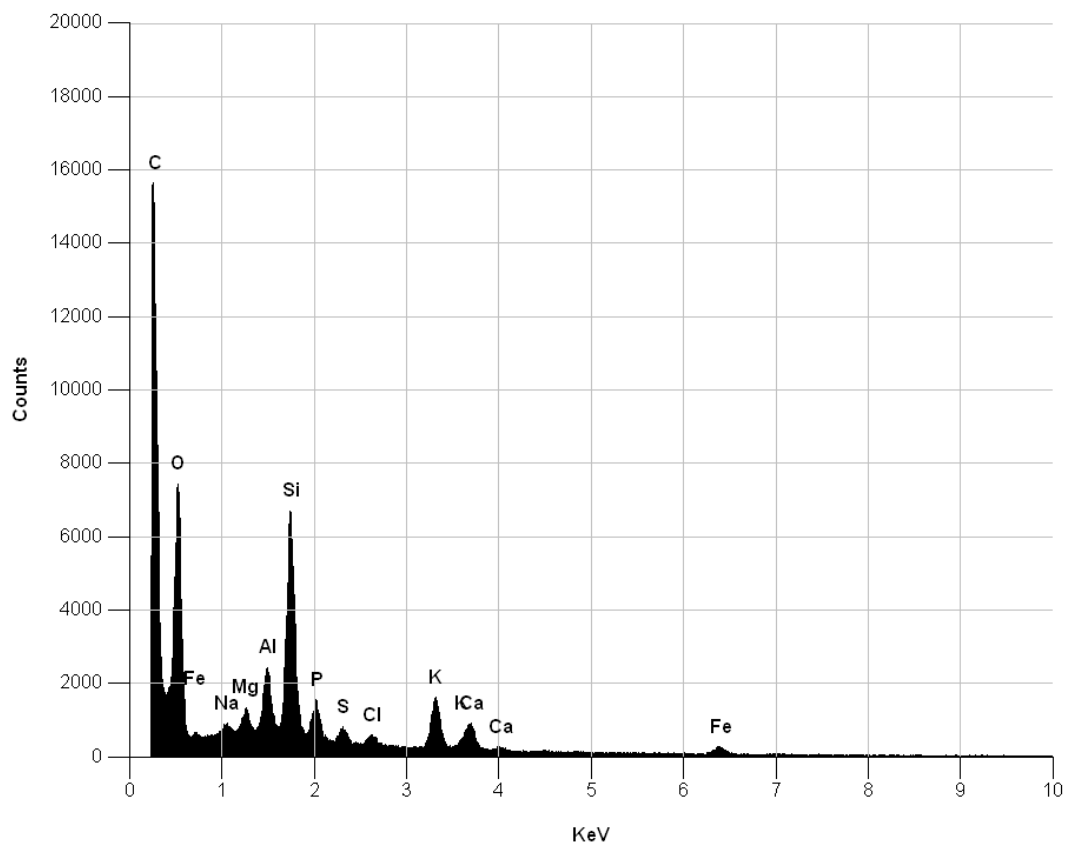


Figure S2. EDX spectrum obtained from the *B. terrestris* silk fibre hand drawn at 0.10 cm/s shown as Figure 1c.