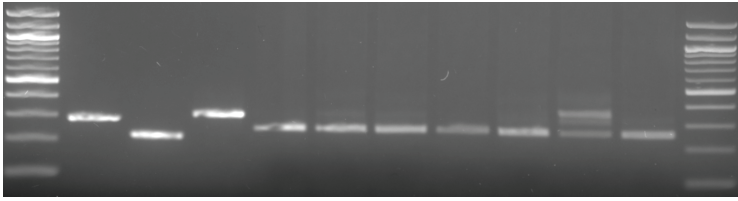
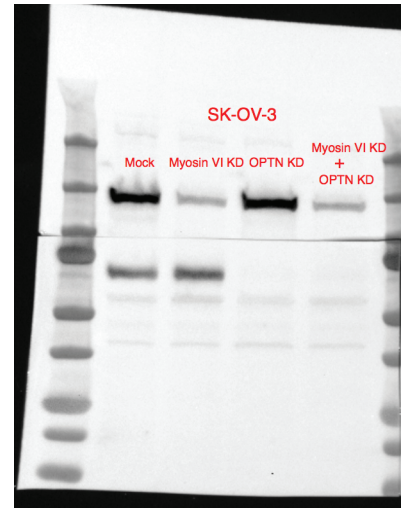


PCR of ovarian primary tumors (Fig. 1c)



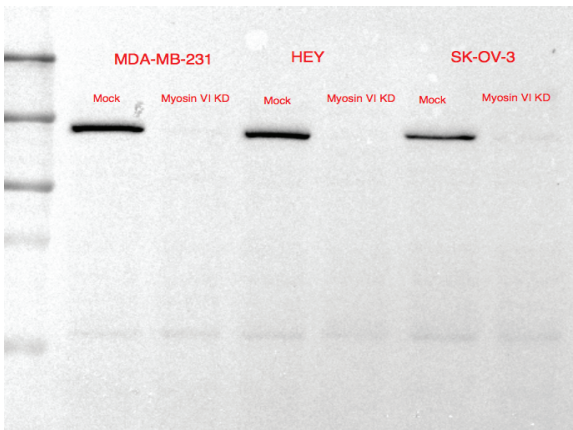
PCR of ovarian cell lines (Fig. 1d)



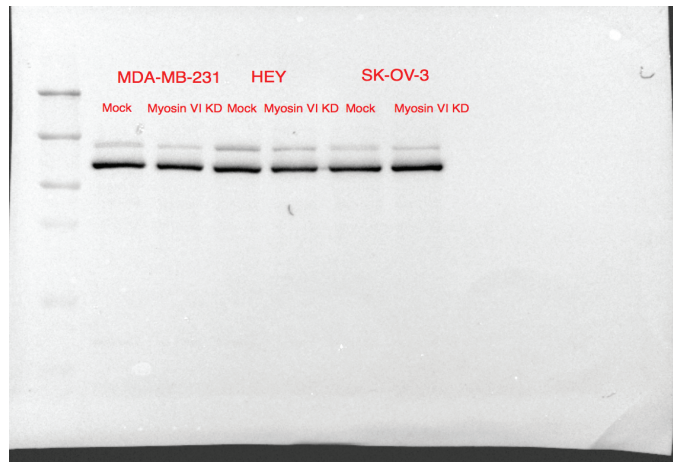
IB: myosin VI

IB: optineurin

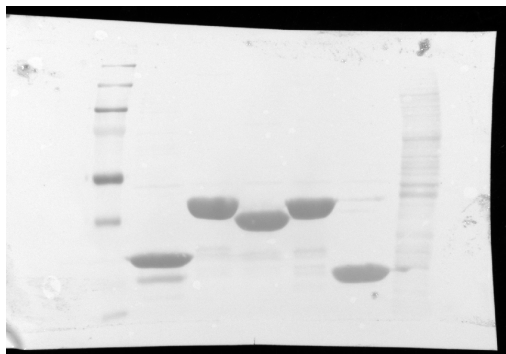
(Fig. 2a)



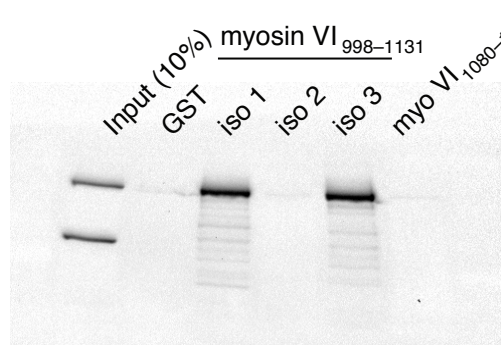
IB anti myosin VI (Fig 1e)



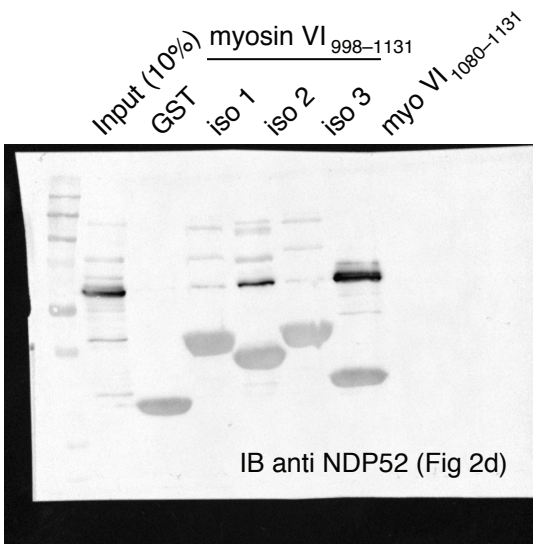
IB anti vinculin (Fig 1e)



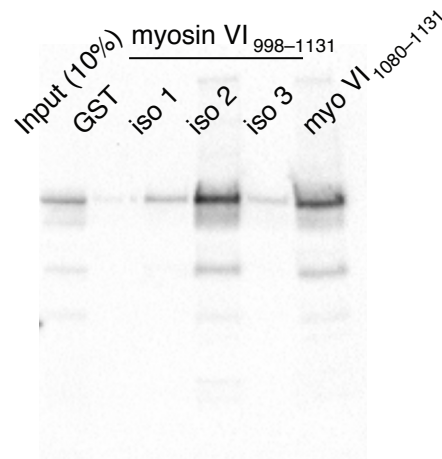
ponceau (Fig. 2d)



IB anti CLTC (Fig 2d)

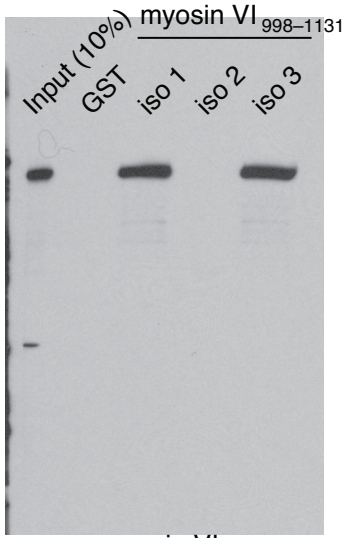


IB anti NDP52 (Fig 2d)

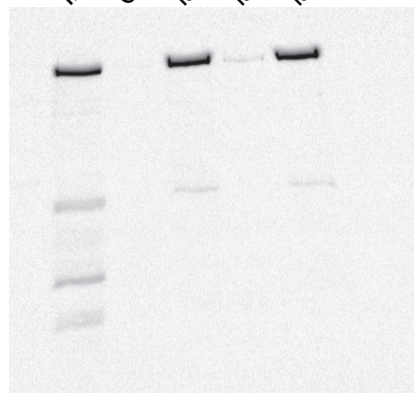


IB anti T6BP (Fig 2d)

CLTC

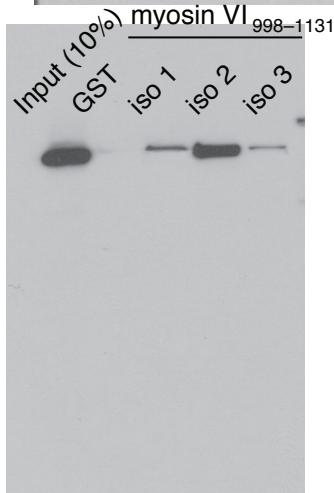


myosin VI<sub>998-1131</sub>

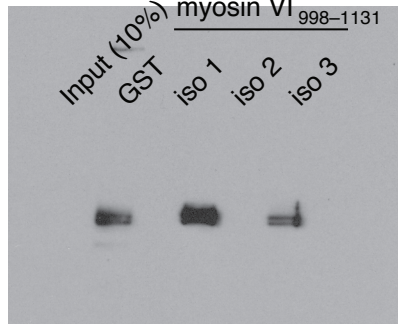


PI3KC2α

DDB1

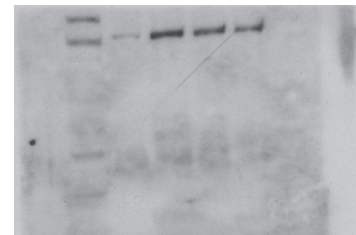


myosin VI<sub>998-1131</sub>



CLINT1

myosin VI<sub>998-1131</sub>

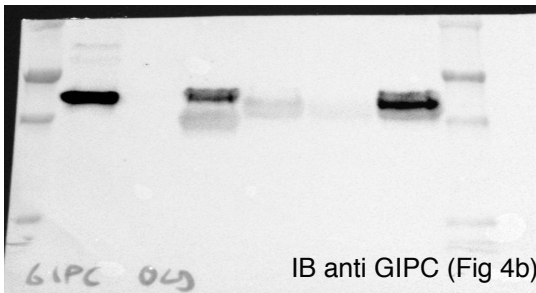


COPB2

IBs (Fig 2f)

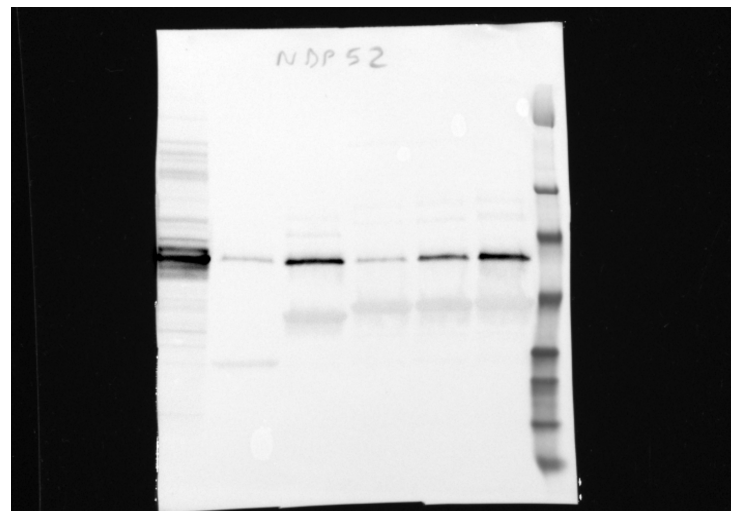
myosin VI<sub>long</sub>

Input (10%)  
GST myo VI<sub>short</sub> WT L1118A M1062Q



myosin VI<sub>long</sub>

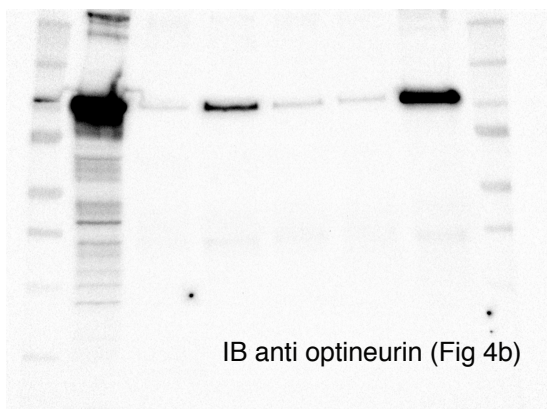
Input (10%)  
GST myo VI<sub>short</sub> WT L1118A M1062Q



IB anti NDP52 (Fig 4b)

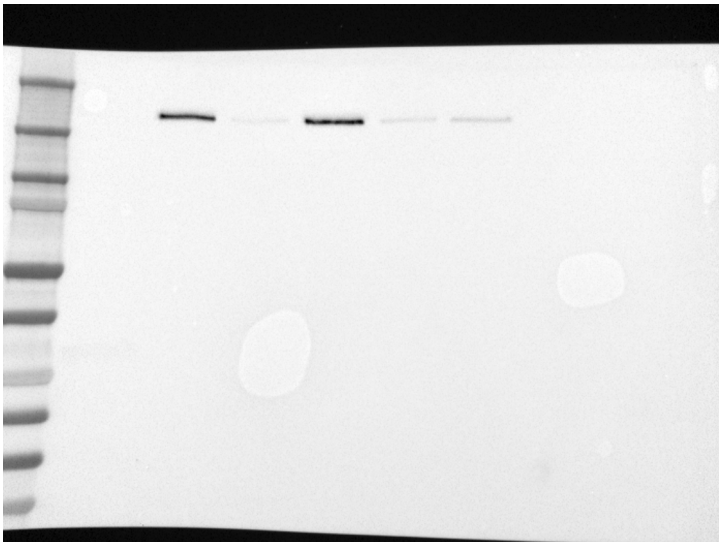
myosin VI<sub>long</sub>

Input (10%)  
GST myo VI<sub>short</sub> WT L1118A M1062Q



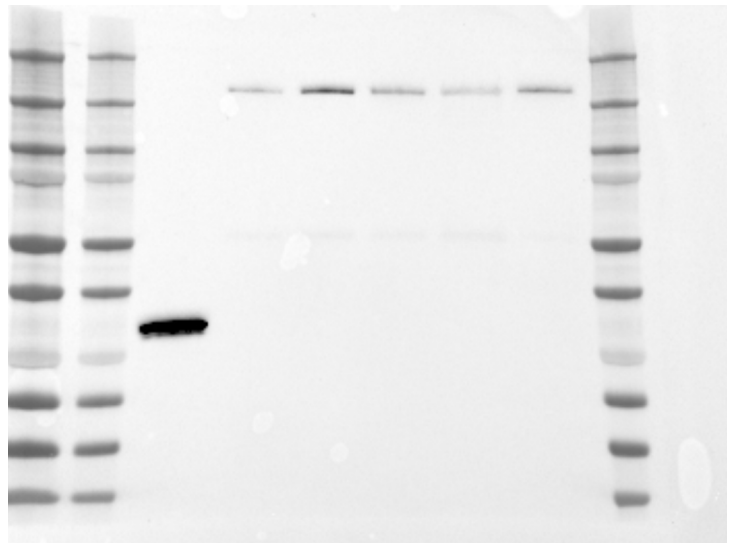
Uncropped images of Fig 4d

GFP Long Short W1192L L1118A M1062Q



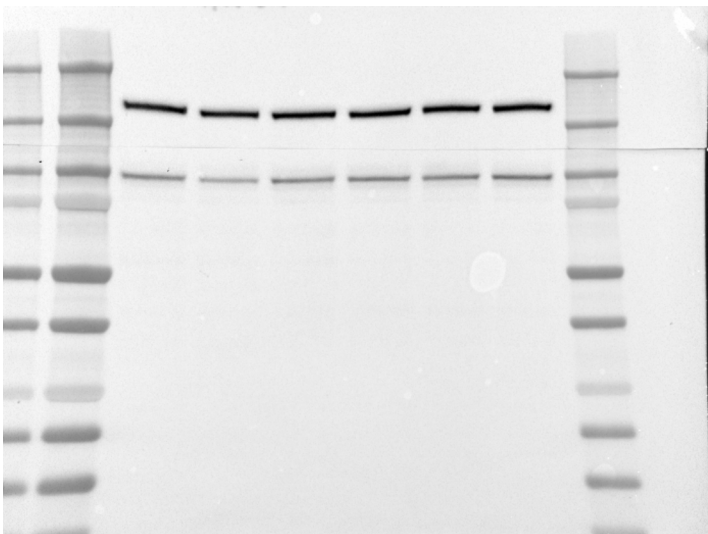
IP:GFP, IB CLTC

GFP Long Short W1192L L1118A M1062Q



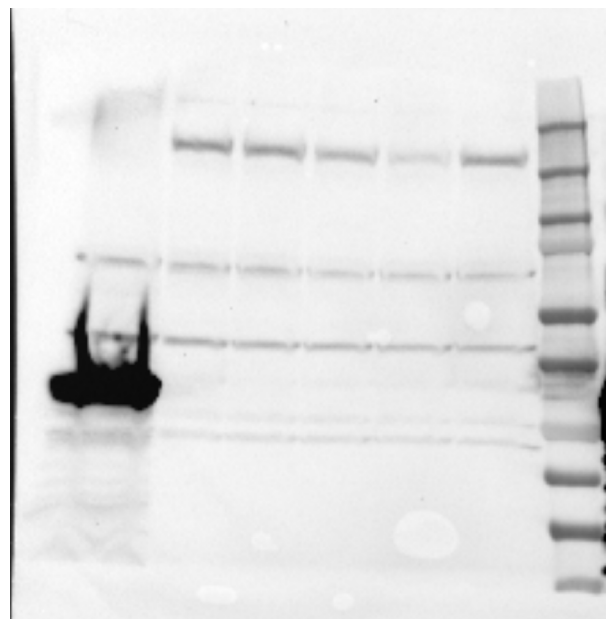
IP:GFP, IB GFP

GFP Long Short W1192L L1118A M1062Q



input IB:CLTC

GFP Long Short W1192L L1118A M1062Q



input IB:GFP