

S2 File.  $^{18}\text{F}$ -FES MicroPET/CT imaging and quantitative value (%ID/ $g_{\text{max}}$ , T/M).

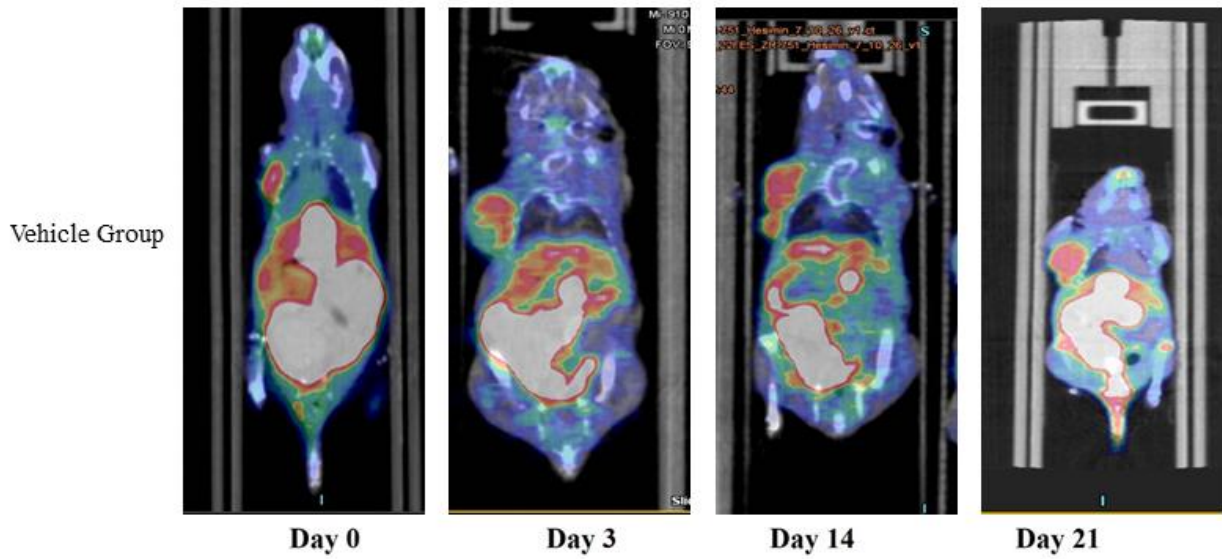


Figure A.  $^{18}\text{F}$ -FES MicroPET/CT imaging in vehicle group

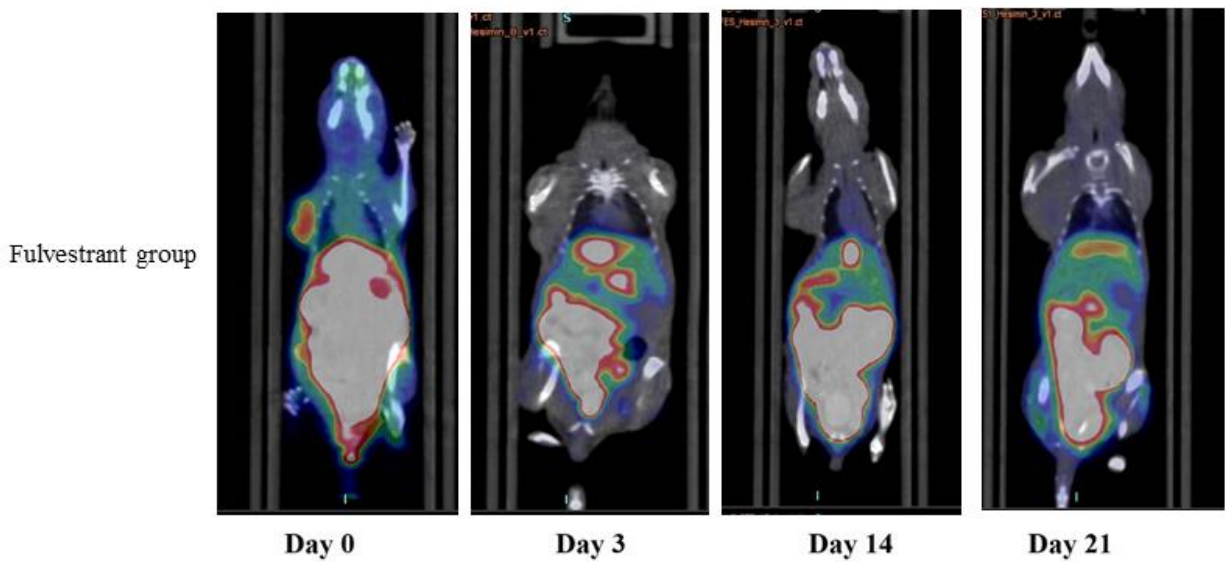


Figure B.  $^{18}\text{F}$ -FES MicroPET/CT imaging in fulvestrant group

**Table A. Quantitative value of  $^{18}\text{F}$ -FES %ID/g<sub>max</sub> in vehicle group**

Vehicle Group	%ID/g <sub>max</sub> of $^{18}\text{F}$ -FES			
	Day 0	Day 3	Day 14	Day 21
Mice 1	3.9	3.9	3.9	3.9
Mice 2	3	3.3	3.5	4.8
Mice 3	3.4	3.5	3.6	4.2
Mice 4	4.4	4.5	4.5	4.2
Mice 5	4.9	5	5	4

**Table B. Quantitative value of  $^{18}\text{F}$ -FES %ID/g<sub>max</sub> in fulvestrant group**

Fulvestrant Group	%ID/g <sub>max</sub> of $^{18}\text{F}$ -FES			
	Day 0	Day 3	Day 14	Day 21
Mice 1	3.9	1	1.1	0.8
Mice 2	3	0.3	0.3	0.3
Mice 3	3.4	0.3	0.3	0.5
Mice 4	4.4	0.8	0.3	0.3
Mice 5	4.9	0.2	0.5	0.4

**Table C. Quantitative value of  $^{18}\text{F}$ -FES T/M in vehicle group**

Vehicle Group	T/M of $^{18}\text{F}$ -FES			
	Day 0	Day 3	Day 14	Day 21
Mice 1	3	3.2	3.5	3.8
Mice 2	4.2	4.3	4.5	4.6
Mice 3	4.2	4.3	4.5	4.7
Mice 4	4	4.2	4.5	4.5
Mice 5	4.4	4.5	4.7	5

**Table D. Quantitative value of  $^{18}\text{F}$ -FES T/M in fulvestrant group**

<b>Fulvestrant Group</b>	<b>T/M of <math>^{18}\text{F}</math>-FES</b>			
	Day 0	Day 3	Day 14	Day 21
Mice 1	5.1	2.5	2.2	2.6
Mice 2	3.2	1.5	1.5	1.5
Mice 3	5.6	3	3	2.5
Mice 4	4.6	2.6	1.5	1.5
Mice 5	5	2	2	1.5