

S3 File.  $^{18}\text{F}$ -FDG MicroPET/CT imaging and quantitative value ( $\%ID/g_{\max}$ , T/M).

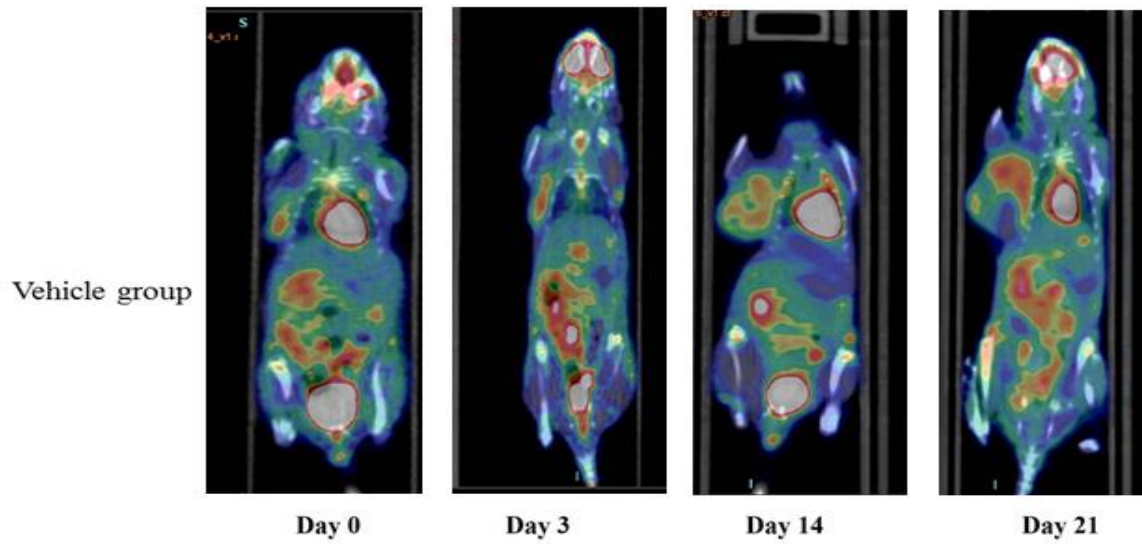


Figure A.  $^{18}\text{F}$ -FDG MicroPET/CT imaging in vehicle group

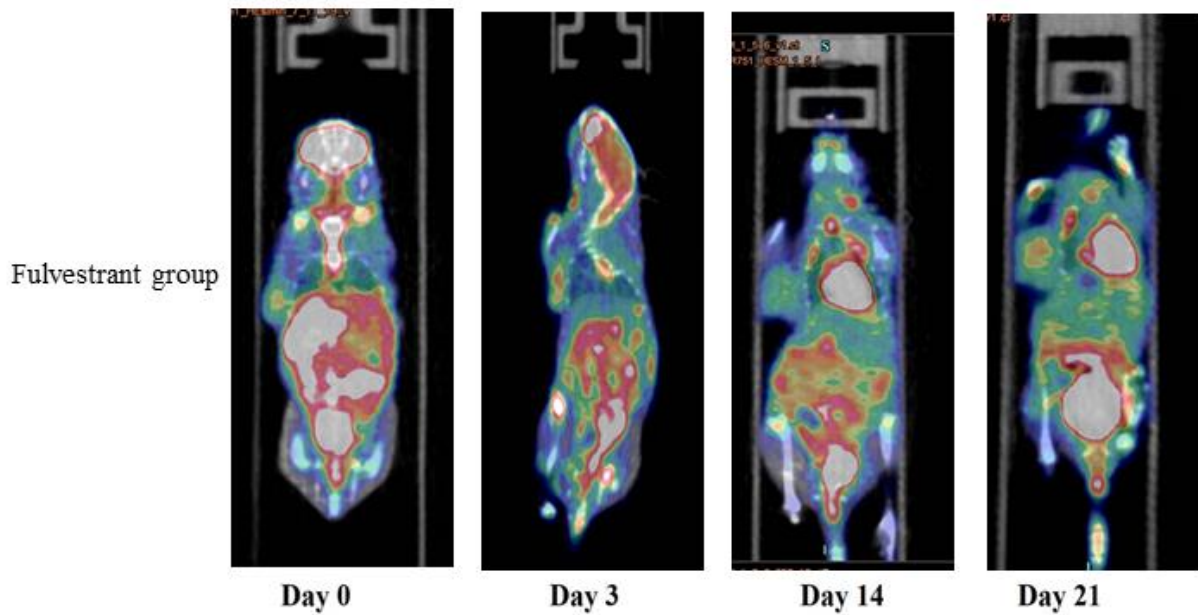


Figure B.  $^{18}\text{F}$ -FDG MicroPET/CT imaging in fulvestrant group

**Table A. Quantitative value of  $^{18}\text{F}$ -FDG %ID/g<sub>max</sub> in vehicle group**

| Vehicle Group | %ID/g <sub>max</sub> of $^{18}\text{F}$ -FDG |       |        |        |
|---------------|--|-------|--------|--------|
|               | Day 0  | Day 3 | Day 14 | Day 21 |
| Mice 1        | 6.1  | 7.1   | 7.2    | 8.2    |
| Mice 2        | 5  | 3.1   | 7.7    | 8.2    |
| Mice 3        | 4.2  | 5.2   | 6.1    | 8.2    |
| Mice 4        | 6.8  | 7.3   | 6.9    | 8.9    |
| Mice 5        | 4.4  | 3.4   | 6.3    | 9      |

**Table B. Quantitative value of  $^{18}\text{F}$ -FDG %ID/g<sub>max</sub> in fulvestrant group**

| Fulvestrant Group | %ID/g <sub>max</sub> of $^{18}\text{F}$ -FDG |       |        |        |
|-------------------|--|-------|--------|--------|
|                   | Day 0  | Day 3 | Day 14 | Day 21 |
| Mice 1            | 6  | 7.1   | 6.8    | 7.9    |
| Mice 2            | 4.4  | 3.1   | 5      | 6.2    |
| Mice 3            | 4.2  | 5.2   | 6      | 7.6    |
| Mice 4            | 6.9  | 6.3   | 8.3    | 6.2    |
| Mice 5            | 7.2  | 4.4   | 5      | 7.7    |

**Table C. Quantitative value of  $^{18}\text{F}$ -FDG T/M in vehicle group**

| Vehicle Group | T/M of $^{18}\text{F}$ -FDG |       |        |        |
|---------------|-----------------------------|-------|--------|--------|
|               | Day 0                       | Day 3 | Day 14 | Day 21 |
| Mice 1        | 1.8                         | 2.6   | 2.3    | 5.1    |
| Mice 2        | 1.4                         | 1.2   | 1.4    | 3.9    |
| Mice 3        | 2.3                         | 1.6   | 3.1    | 4.8    |
| Mice 4        | 2.7                         | 1.3   | 3.8    | 3.1    |
| Mice 5        | 1.4                         | 1.9   | 2.6    | 4.9    |

**Table D. Quantitative value of  $^{18}\text{F}$ -FDG T/M in fulvestrant group**

| <b>Vehicle Group</b> | <b>T/M of <math>^{18}\text{F}</math>-FDG</b> |       |        |        |
|----------------------|--|-------|--------|--------|
|                      | Day 0  | Day 3 | Day 14 | Day 21 |
| Mice 1               | 2.8  | 2.6   | 3.2    | 3.4    |
| Mice 2               | 1  | 1.2   | 1.2    | 2.9    |
| Mice 3               | 1.1  | 1.6   | 3.7    | 2.6    |
| Mice 4               | 2  | 1.3   | 5.5    | 3.8    |
| Mice 5               | 2.4  | 2.3   | 1.2    | 3.1    |