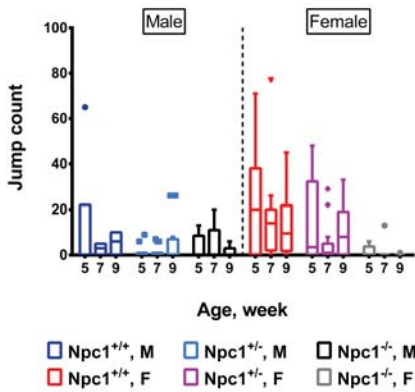


Figure S4

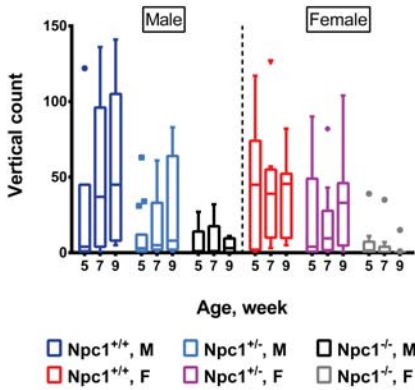
A.



	Change in jump count (incidence rate ratio, compared to <i>Npc1</i> ^{+/+})	SE	95% CI	p
<i>Npc1</i> ^{+/-}	0.3	0.1	0.2, 0.7	0.002
<i>Npc1</i> ^{-/-}	0.1	0.04	0.03, 0.2	<0.0001

	Change in jump count (incidence rate ratio, compared to female)	SE	95% CI	p
Male	0.4	0.1	0.2, 0.7	0.003
<i>Npc1</i> ^{+/+} , male	0.1	0.05	0.02, 0.3	<0.0001
<i>Npc1</i> ^{+/-} , male	0.4	0.1	0.2, 0.8	0.008
<i>Npc1</i> ^{-/-} , male	2.0	1.2	0.6, 6.4	0.3

B.



	Change in vertical count (incidence rate ratio, compared to <i>Npc1</i> ^{+/+})	SE	95% CI	p
<i>Npc1</i> ^{+/-}	0.4	0.1	0.2, 0.7	<0.0001
<i>Npc1</i> ^{-/-}	0.1	0.04	0.07, 0.2	<0.0001

	Change in <i>Npc1</i> ^{+/+} vertical count (incidence rate ratio, compared to Week 5)	SE	95% CI	p
Week 7	1.7	0.4	1.1, 2.6	0.02
Week 9	1.9	0.4	1.2, 2.9	0.004

	Change in <i>Npc1</i> ^{+/-} vertical count (incidence rate ratio, compared to Week 5)	SE	95% CI	p
Week 7	1.4	0.4	0.8, 2.3	0.2
Week 9	1.8	0.5	1.1, 3.0	0.02

	Change in <i>Npc1</i> ^{-/-} vertical count (incidence rate ratio, compared to Week 5)	SE	95% CI	p
Week 7	0.6	0.3	0.2, 1.4	0.2
Week 9	0.4	0.2	0.1, 1.1	0.08

Figure S4 Spontaneous vertical locomotor activity of *Npc1*^{+/+} ($n_{\text{female}} = 11$; $n_{\text{male}} = 7$), *Npc1*^{+/-} mice ($n_{\text{female}} = 15$; $n_{\text{male}} = 15$) and *Npc1*^{-/-} ($n_{\text{female}} = 9$; $n_{\text{male}} = 5$) mice in open-field test performed at 5, 7, and 9 weeks of age. Total arena (A) jump count, and (B) vertical count. The box and whiskers plot depicts the median, the IQR, and the maximum and minimum values within 1.5 times the IQR. Statistical analysis: Random effects negative binomial regression with animals as random effect, adjusted for age and gender, or gender only.