

Supplemental materials for “Transferring the C-terminus of the chemokine CCL21 to CCL19 confers enhanced heparin binding”

Austin J. Barmore<sup>a1</sup>, Sally M. Castex<sup>a1</sup>, Brittany A. Gouletas<sup>a1</sup>, Alex J. Griffith<sup>a1</sup>, Slater W. Metz<sup>a1</sup>, Nicolas G. Muelder<sup>a1</sup>, Michael J. Populin<sup>a1</sup>, David M. Sackett<sup>a1</sup>, Abigail M. Schuster<sup>a1</sup>, and Christopher T. Veldkamp<sup>\*a,b</sup>

<sup>a</sup> Department of Chemistry, University of Wisconsin-Whitewater, 800 West Main Street, Whitewater, WI 53190, USA

<sup>b</sup> Department of Biochemistry, Medical College of Wisconsin, 8701 Watertown Plank Road, Milwaukee, WI 53226, USA

\* Corresponding Author. Email: veldkamc@uww.edu

<sup>1</sup>These authors contributed equally.

The first four data reports that follow are for the elution of CCL21, CCL21trunc, CCL19 and the chimera from a 1 mL HiTrap® heparin HP column. The next four data reports are for the elution of CCL21, CCL21trunc, CCL19 and the chimera from a 1 mL HiTrap® SP-sepharose HP column.



SHIMADZU  
LabSolutions

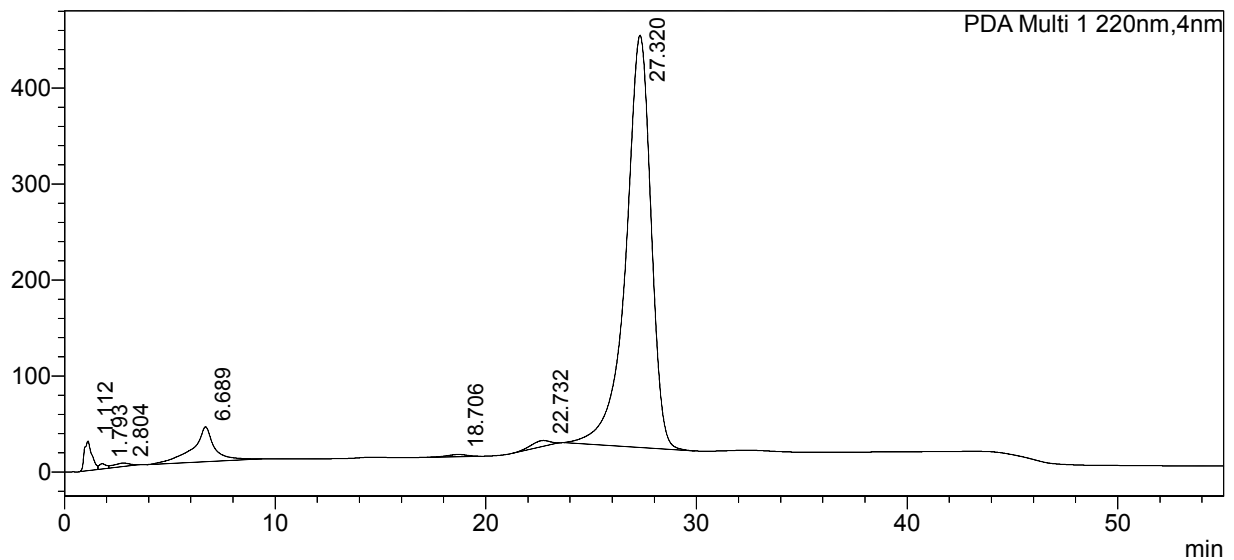
# Analysis Report

## <Sample Information>

Sample Name : CCL21  
 Sample ID : CCL21  
 Data Filename : 20160421CCL21-1300grad3.lcd  
 Method Filename : heparinandcationexchange.lcm  
 Batch Filename :  
 Vial # : -1  
 Injection Volume : 20 uL  
 Date Acquired : 4/21/2016 9:49:39 AM  
 Date Processed : 4/21/2016 10:44:42 AM  
 Sample Type : Unknown  
 Acquired by : USER  
 Processed by : USER

## <Chromatogram>

mAU



## <Peak Table>

PDA Ch1 220nm

Peak#	Ret. Time	Area	Height	Conc.	Unit	Mark	Name
1	1.112	774596	30997	1.938			
2	1.793	132960	5665	0.333		V	
3	2.804	204882	3668	0.513		V	
4	6.689	2617602	36338	6.549			
5	18.706	148803	2266	0.372			
6	22.732	396817	6031	0.993			
7	27.320	35695025	429271	89.303			
Total		39970685	514237				

SHIMADZU  
LabSolutions

# Analysis Report

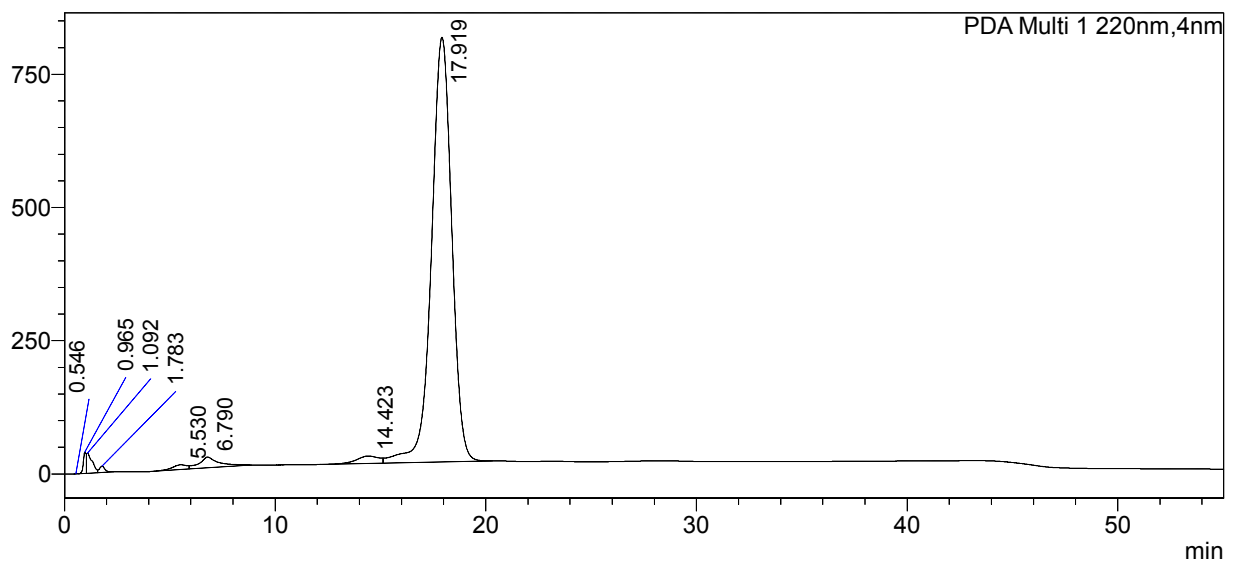
## <Sample Information>

Sample Name : CCL21trunc  
 Sample ID : CCL21trunc  
 Data Filename : 20160421CCL21trunc-1300grad4.lcd  
 Method Filename : heparinandcationexchange.lcm  
 Batch Filename :  
 Vial # : -1  
 Injection Volume : 20 uL  
 Date Acquired : 4/21/2016 10:46:05 AM  
 Date Processed : 4/21/2016 11:41:07 AM

Sample Type : Unknown  
 Acquired by : USER  
 Processed by : USER

## <Chromatogram>

mAU



## <Peak Table>

PDA Ch1 220nm

Peak#	Ret. Time	Area	Height	Conc.	Unit	Mark	Name
1	0.546	1853	309	0.003			
2	0.965	367435	40221	0.639			
3	1.092	698974	37464	1.215		V	
4	1.783	215818	11964	0.375		V	
5	5.530	447676	8939	0.778			
6	6.790	1291390	20062	2.245		V	
7	14.423	1054932	14057	1.834			
8	17.919	53440024	796879	92.910		V	
Total		57518102	929896				



SHIMADZU  
LabSolutions

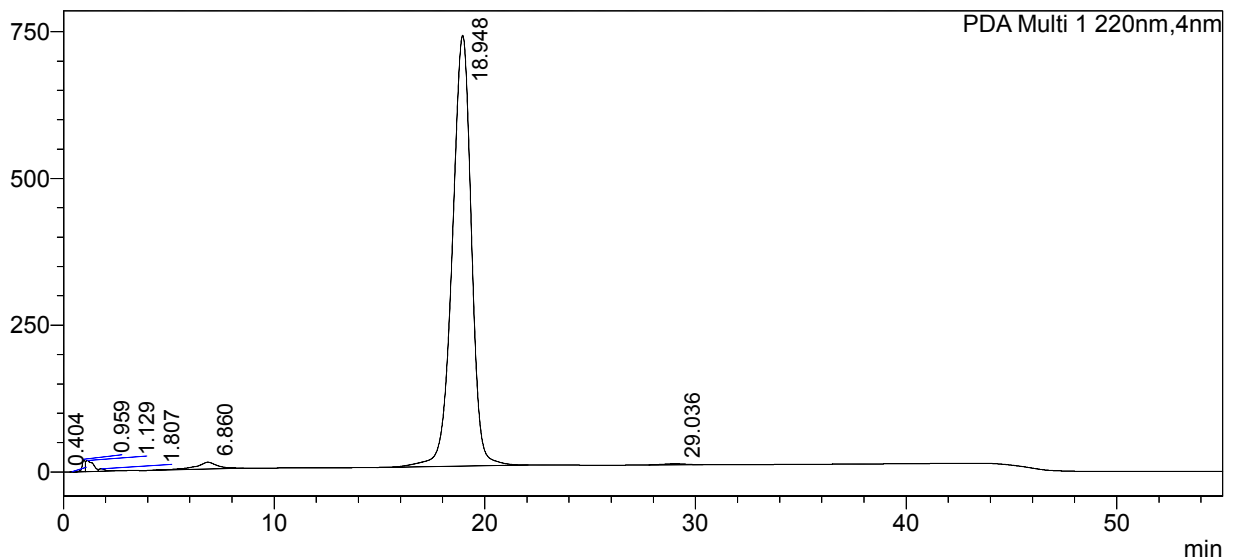
# Analysis Report

## <Sample Information>

Sample Name : CCL19  
 Sample ID : CCL19  
 Data Filename : 20160421CCL19-1300grad2.lcd  
 Method Filename : heparinandcationexchange.lcm  
 Batch Filename :  
 Vial # : -1  
 Injection Volume : 20 uL  
 Date Acquired : 4/21/2016 8:52:51 AM  
 Date Processed : 4/21/2016 9:47:53 AM  
 Sample Type : Unknown  
 Acquired by : USER  
 Processed by : USER

## <Chromatogram>

mAU



## <Peak Table>

PDA Ch1 220nm

Peak#	Ret. Time	Area	Height	Conc.	Unit	Mark	Name
1	0.404	1076	206	0.002			
2	0.959	213376	21456	0.446			
3	1.129	449791	19150	0.940		V	
4	1.807	80703	4294	0.169		V	
5	6.860	850544	11626	1.777			
6	18.948	46156326	733929	96.410			
7	29.036	123188	1724	0.257			
Total		47875004	792386				



SHIMADZU  
LabSolutions

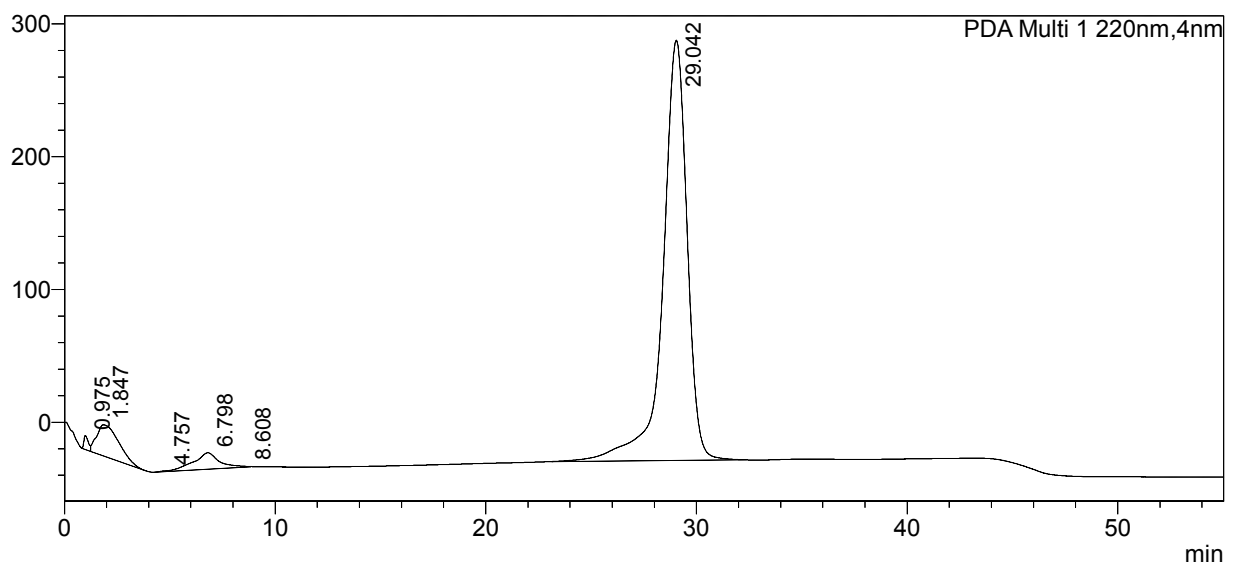
# Analysis Report

## <Sample Information>

Sample Name : Chimera  
 Sample ID : Chimera  
 Data Filename : 20160421Chimera-1300grad1.lcd  
 Method Filename : heparinandcationexchange.lcm  
 Batch Filename :  
 Vial # : -1  
 Injection Volume : 20 uL  
 Date Acquired : 4/21/2016 7:53:44 AM  
 Date Processed : 4/21/2016 8:48:47 AM  
 Sample Type : Unknown  
 Acquired by : USER  
 Processed by : USER

## <Chromatogram>

mAU



## <Peak Table>

PDA Ch1 220nm

Peak#	Ret. Time	Area	Height	Conc.	Unit	Mark	Name
1	0.975	155304	10331	0.548			
2	1.847	1751165	23481	6.182		V	
3	4.757	10054	651	0.035			
4	6.798	1066968	12438	3.767		V	
5	8.608	5898	621	0.021		V	
6	29.042	25336073	316484	89.446			
Total		28325462	364007				

SHIMADZU  
LabSolutions

# Analysis Report

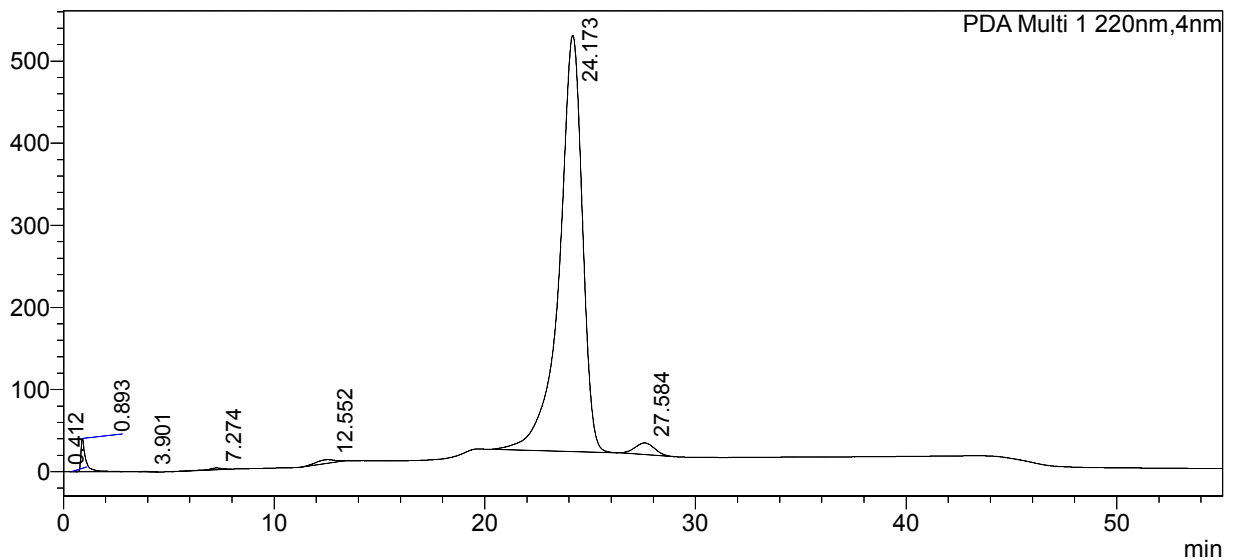
## <Sample Information>

Sample Name : ccl21  
 Sample ID : ccl21  
 Data Filename : 20160426SPCCL21\_2.lcd  
 Method Filename : heparinandcationexchange.lcm  
 Batch Filename :  
 Vial # : -1  
 Injection Volume : 20 uL  
 Date Acquired : 4/26/2016 8:58:45 AM  
 Date Processed : 4/26/2016 9:53:48 AM

Sample Type : Unknown  
 Acquired by : USER  
 Processed by : USER

## <Chromatogram>

mAU



## <Peak Table>

PDA Ch1 220nm

Peak#	Ret. Time	Area	Height	Conc.	Unit	Mark	Name
1	0.412	3104	372	0.008			
2	0.893	642401	40762	1.587		S	
3	3.901	10247	346	0.025			
4	7.274	86863	2034	0.215			
5	12.552	286610	4337	0.708			
6	24.173	38560473	506654	95.247			
7	27.584	894928	13969	2.211			
Total		40484625	568473				

SHIMADZU  
LabSolutions

# Analysis Report

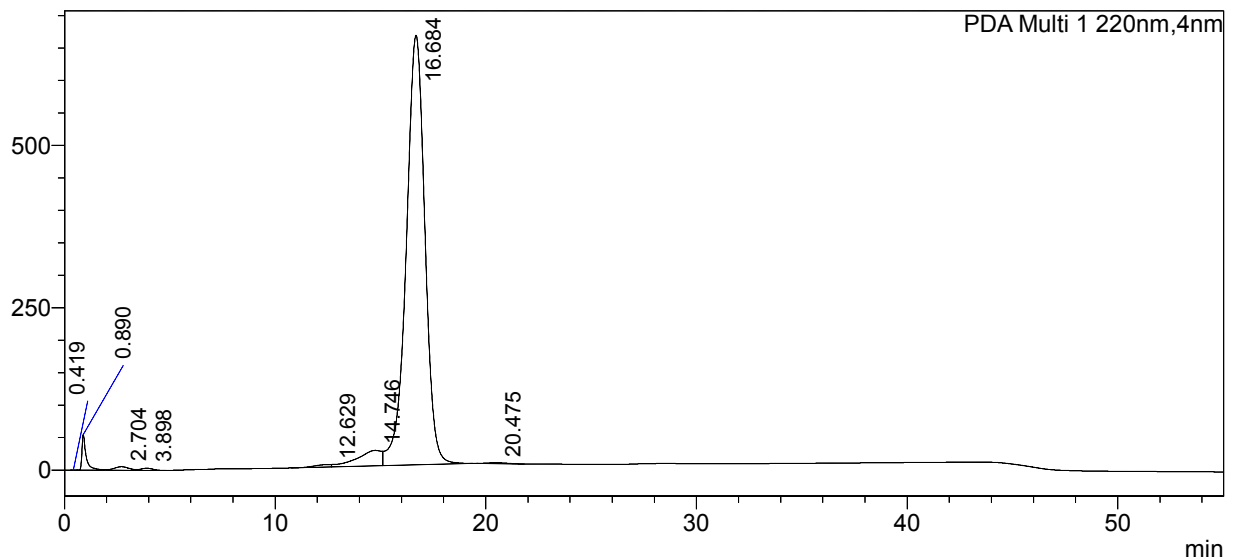
## <Sample Information>

Sample Name : ccl21trunc  
 Sample ID : ccl21trunc  
 Data Filename : 20160426SPCCL21trunc\_4.lcd  
 Method Filename : heparinandcationexchange.lcm  
 Batch Filename :  
 Vial # : -1  
 Injection Volume : 20 uL  
 Date Acquired : 4/26/2016 10:52:27 AM  
 Date Processed : 4/26/2016 11:47:30 AM

Sample Type : Unknown  
 Acquired by : USER  
 Processed by : USER

## <Chromatogram>

mAU



## <Peak Table>

PDA Ch1 220nm

Peak#	Ret. Time	Area	Height	Conc.	Unit	Mark	Name
1	0.419	1257	129	0.003		V	
2	0.890	765533	54538	1.732			
3	2.704	269995	5507	0.611		V	
4	3.898	127503	3285	0.288		V	
5	12.629	208645	3805	0.472			
6	14.746	1936842	23816	4.381		V	
7	16.684	40802544	661544	92.291		V	
8	20.475	98353	1451	0.222			
Total		44210671	754074				





SHIMADZU  
LabSolutions

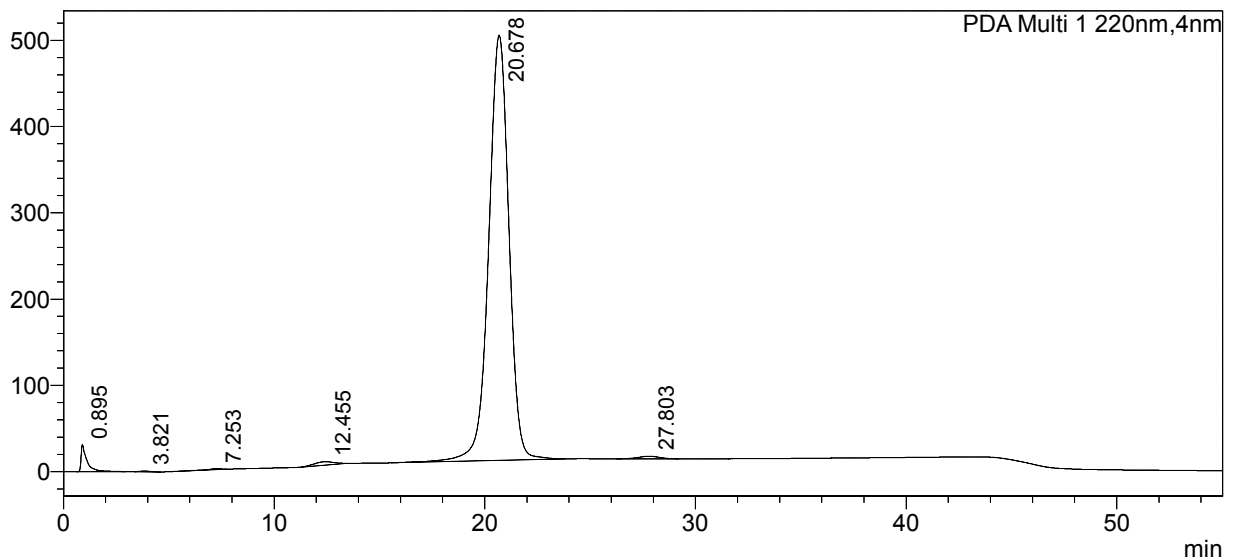
# Analysis Report

## <Sample Information>

Sample Name	: ccl19	Sample Type	: Unknown
Sample ID	: ccl19		
Data Filename	: 20160426SPCCL19_3.lcd		
Method Filename	: heparinandcationexchange.lcm		
Batch Filename	:		
Vial #	: -1		
Injection Volume	: 20 uL	Acquired by	: USER
Date Acquired	: 4/26/2016 9:56:06 AM	Processed by	: USER
Date Processed	: 4/26/2016 10:51:08 AM		

## <Chromatogram>

mAU



## <Peak Table>

PDA Ch1 220nm

Peak#	Ret. Time	Area	Height	Conc.	Unit	Mark	Name
1	0.895	608353	31679	1.785			
2	3.821	26749	796	0.078			
3	7.253	41019	874	0.120			
4	12.455	254818	3809	0.748			
5	20.678	32936264	492840	96.657			
6	27.803	208301	3026	0.611			
Total		34075505	533025				

SHIMADZU  
LabSolutions

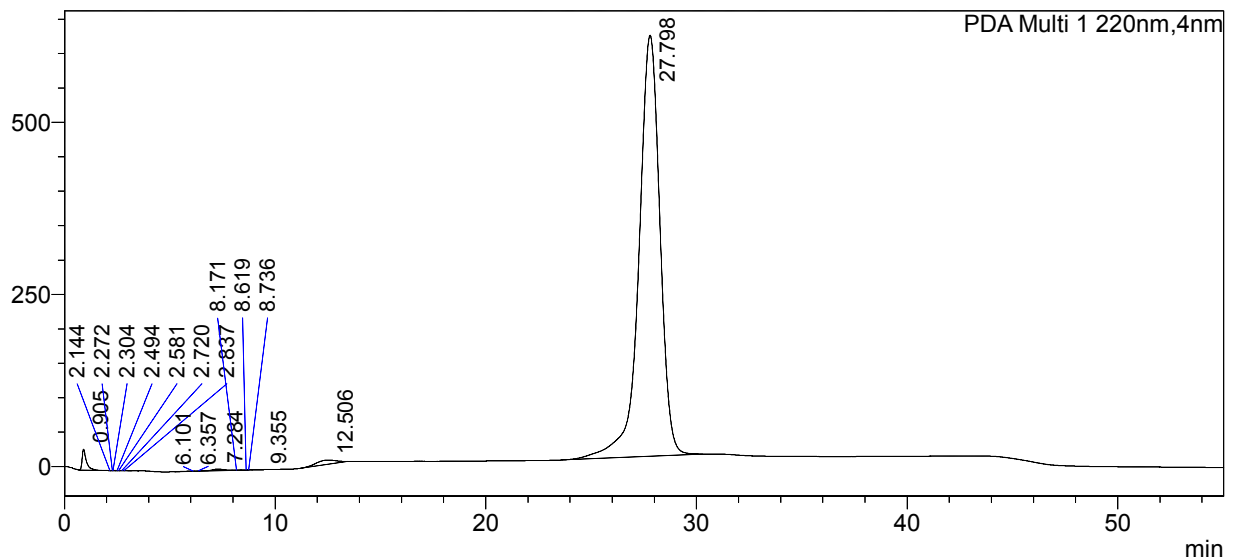
# Analysis Report

## <Sample Information>

Sample Name	: chimera	Sample Type	: Unknown
Sample ID	: chimera		
Data Filename	: 20160426SPChimera1.lcd		
Method Filename	: heparinandcationexchange.lcm		
Batch Filename	:		
Vial #	: -1		
Injection Volume	: 20 uL		
Date Acquired	: 4/26/2016 8:01:49 AM	Acquired by	: USER
Date Processed	: 4/26/2016 8:56:52 AM	Processed by	: USER

## <Chromatogram>

mAU



## <Peak Table>

PDA Ch1 220nm

Peak#	Ret. Time	Area	Height	Conc.	Unit	Mark	Name
1	0.905	423610	30335	0.974			
2	2.144	1287	216	0.003		V	
3	2.272	1641	324	0.004		V	
4	2.304	2790	320	0.006		V	
5	2.494	1672	402	0.004		V	
6	2.581	2385	405	0.005		V	
7	2.720	4153	356	0.010		V	
8	2.837	2812	294	0.006		V	
9	6.101	14855	456	0.034		V	
10	6.357	7172	428	0.016		V	
11	7.284	102461	2510	0.236		V	
12	8.171	6035	245	0.014		V	
13	8.619	2950	143	0.007		V	
14	8.736	1279	121	0.003		V	
15	9.355	1258	29	0.003		V	
16	12.506	414866	6111	0.954			
17	27.798	42504159	611318	97.721			
Total		43495385	654014				