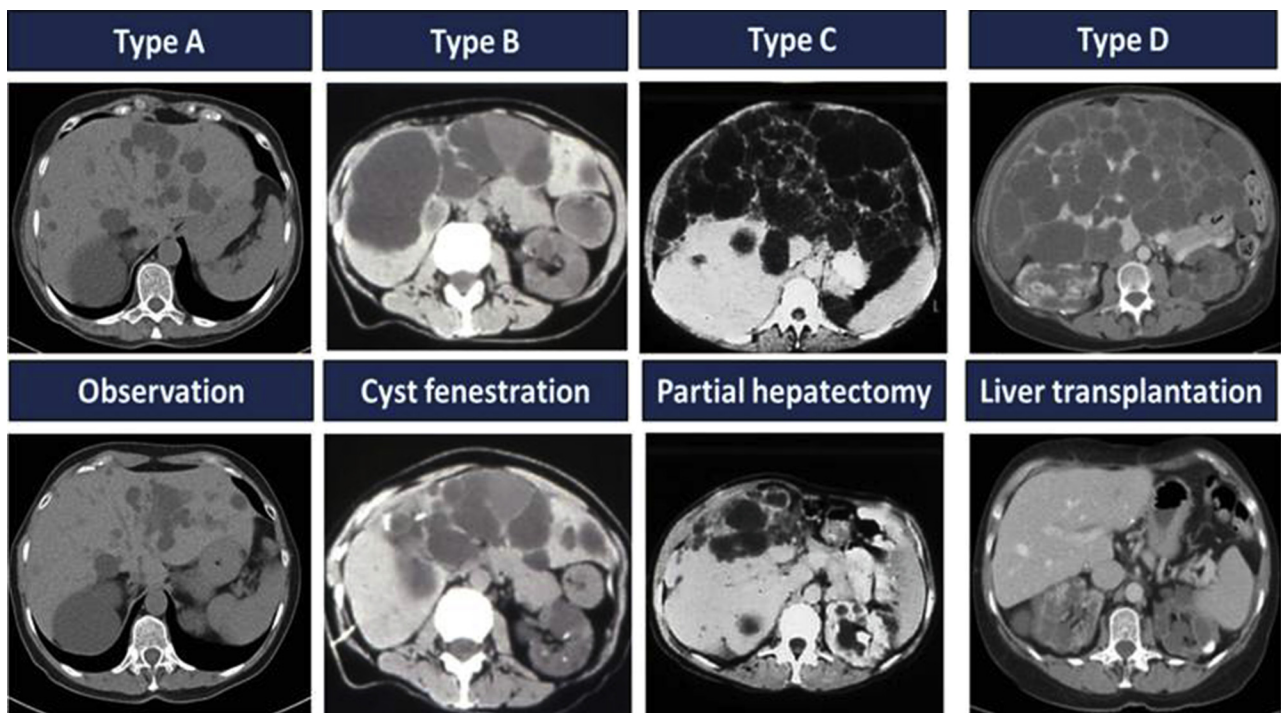


Supplementary Figure 1. Number of patients with polycystic liver disease (PLD) who received orthotopic liver transplantation (OLT) or partial hepatectomy with cyst fenestration (PHCF) for treatment of severe symptomatic PLD in our center.



Supplementary Figure 2. Mayo classification for polycystic liver disease severity guiding treatment strategy. Type A patients have mild symptoms, type B have moderate to severe symptoms but limited numbers of large cysts, type C have severe symptoms with ≥ 1 sector of relatively preserved liver parenchyma, and type D have severe symptoms with < 1 sector of preserved liver parenchyma.