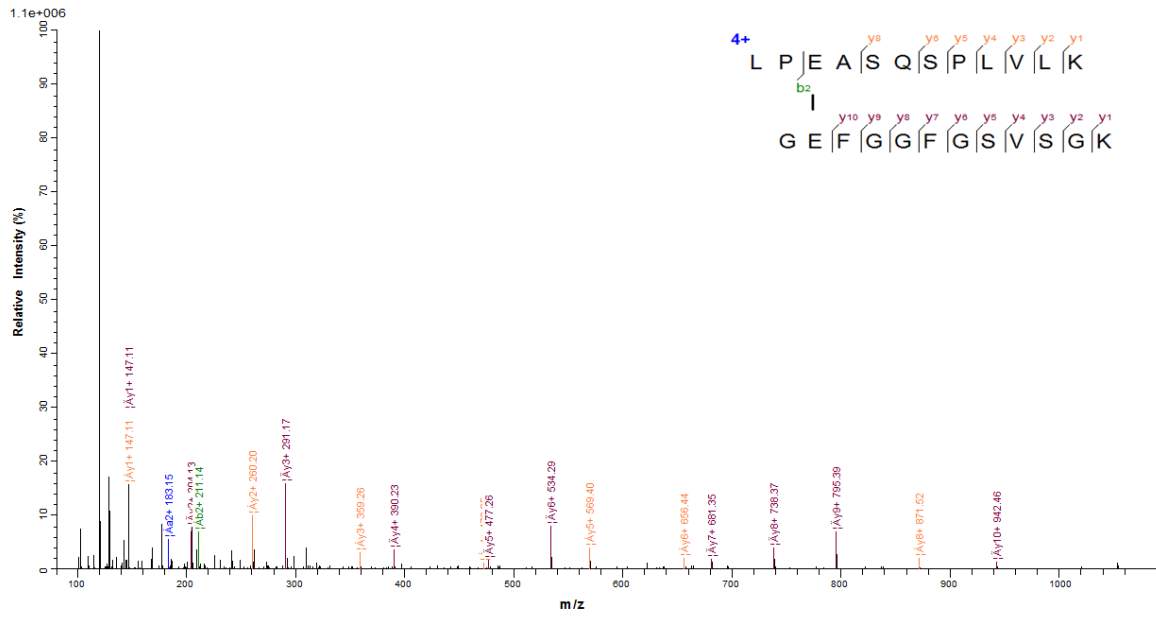
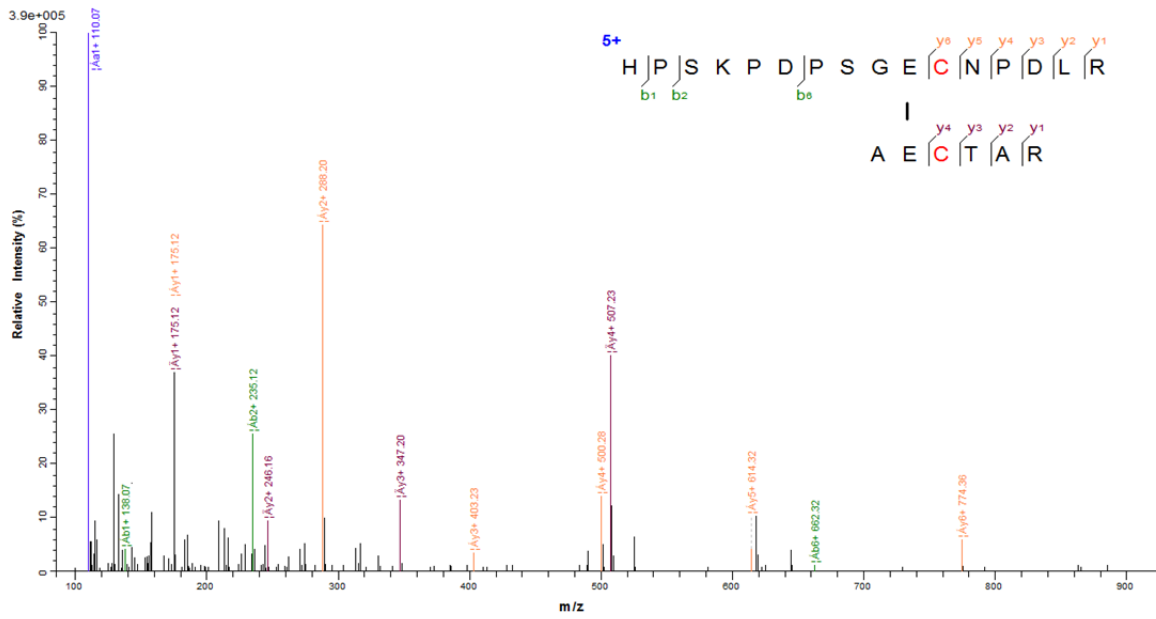


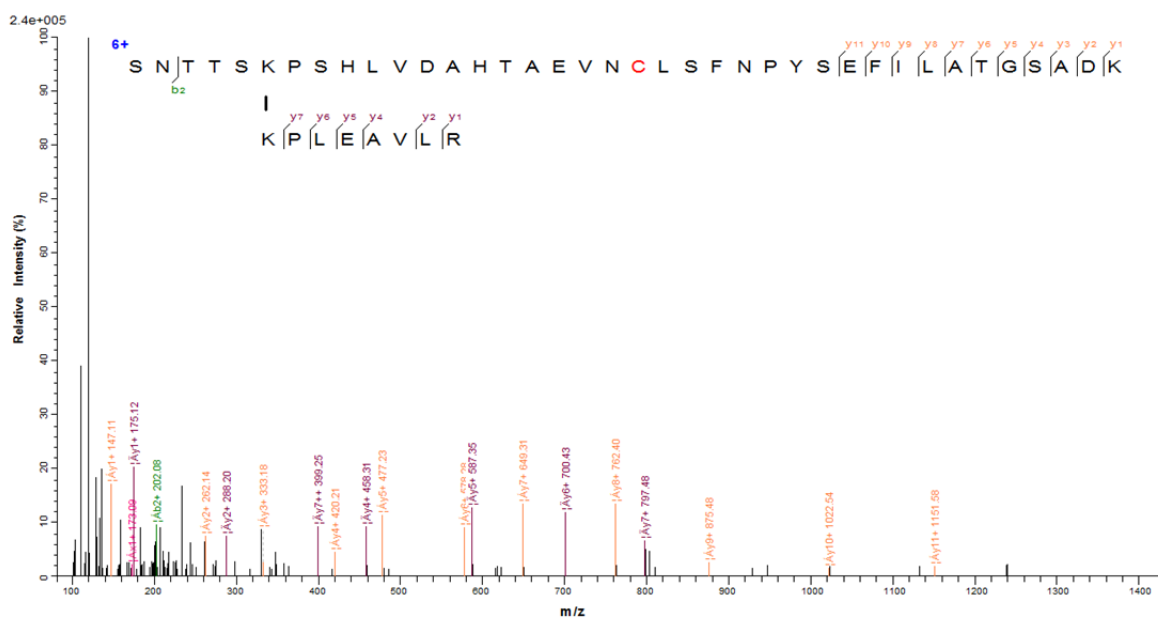
A1



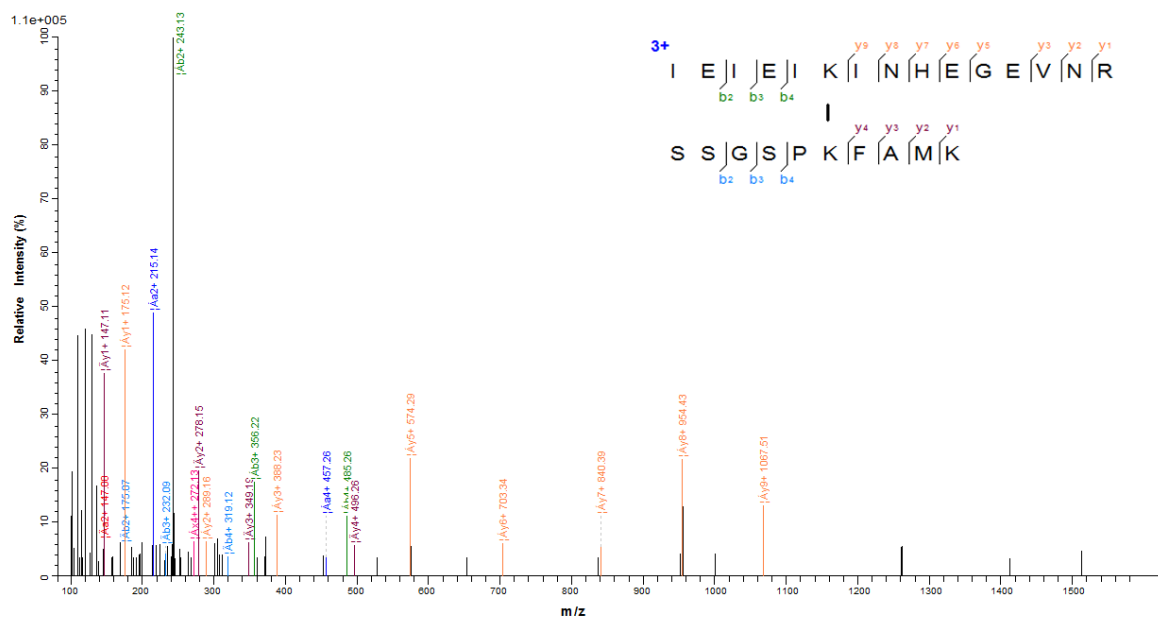
A2



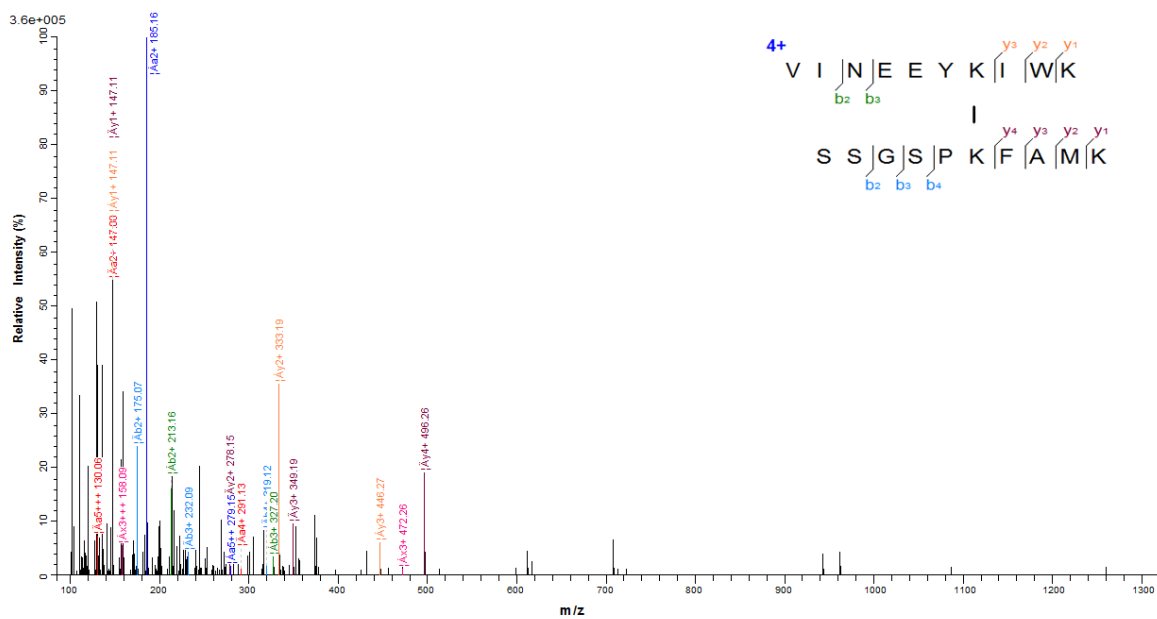
D1



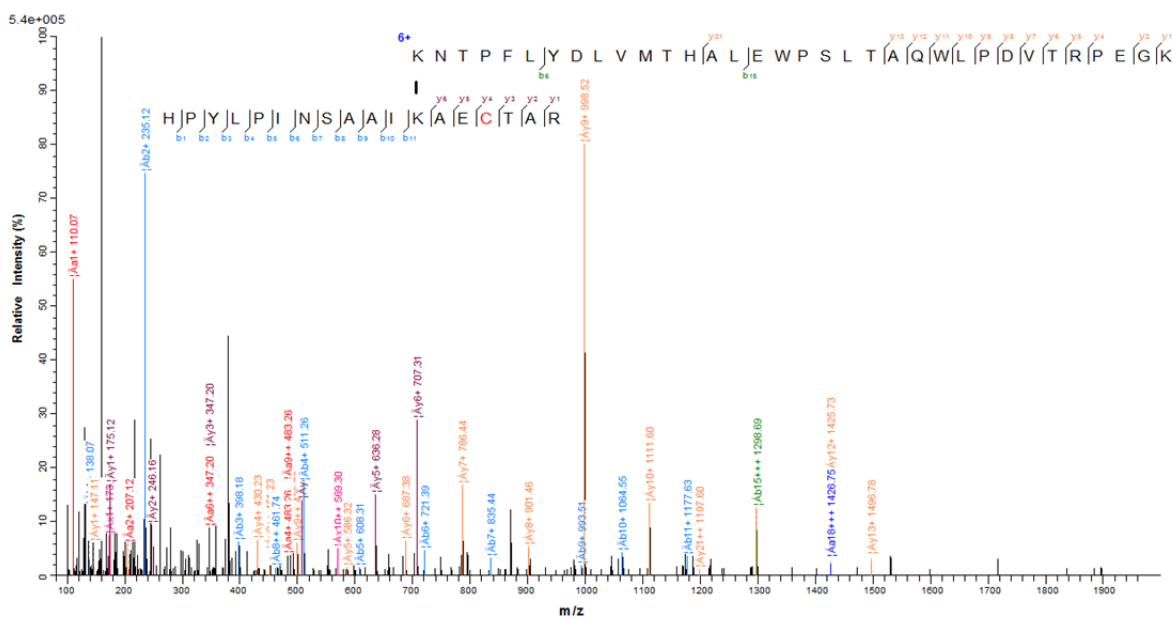
D2



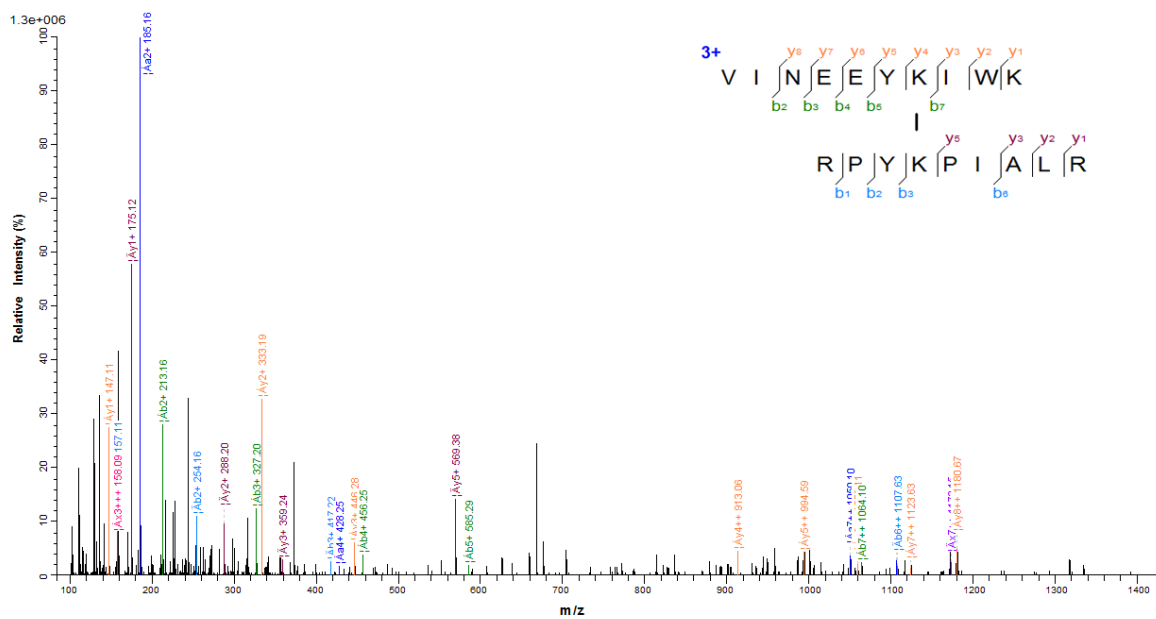
D3



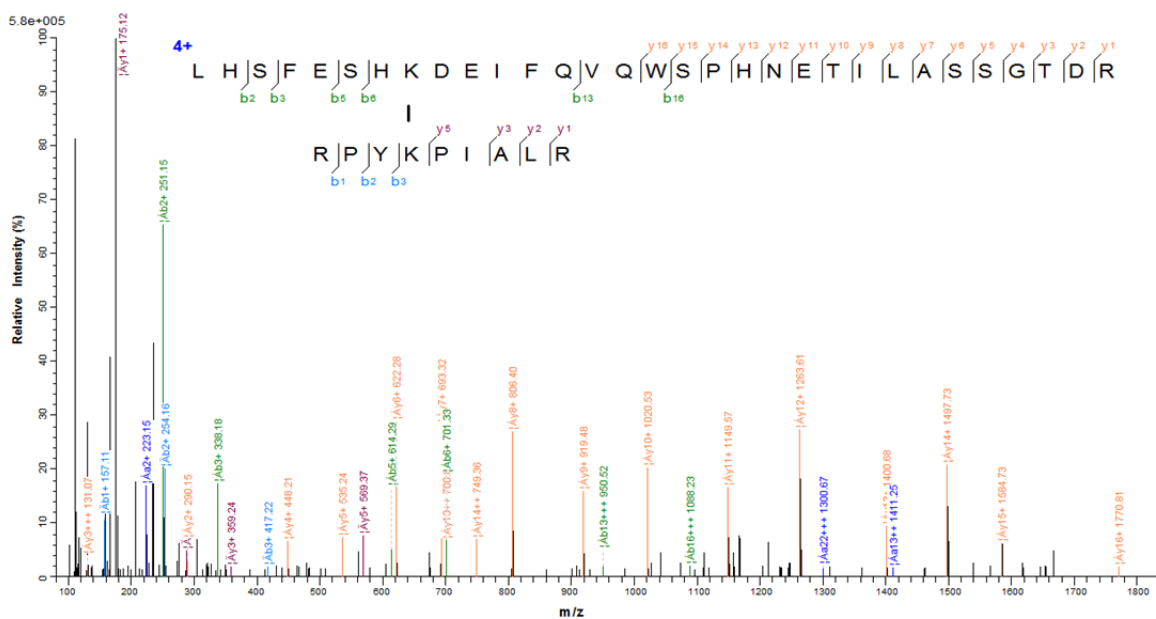
D4



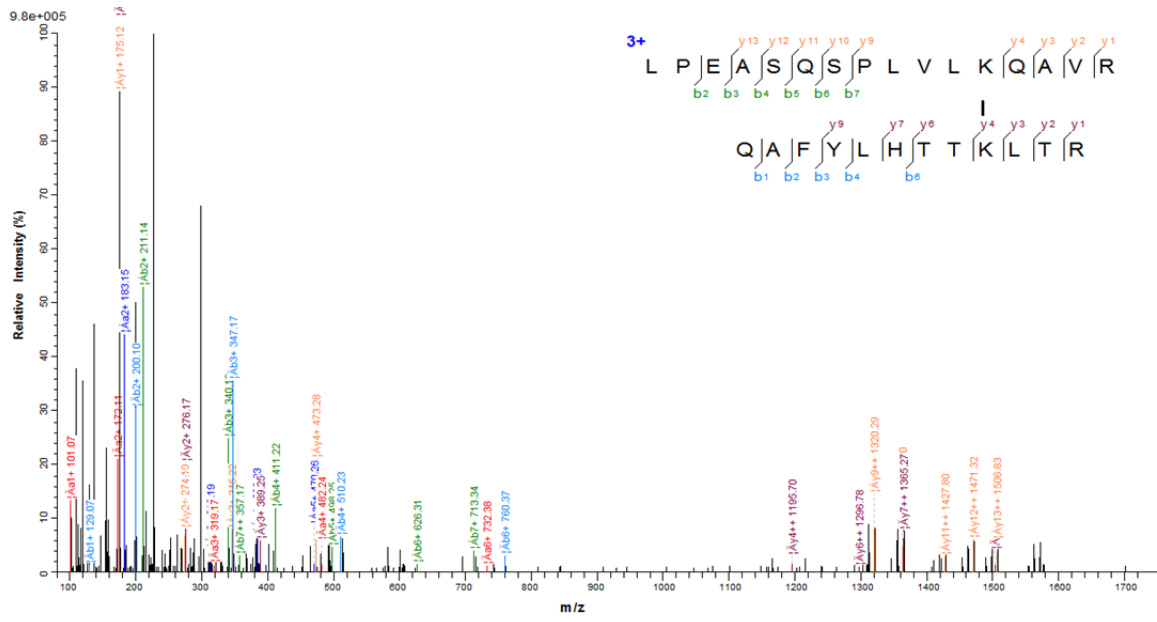
D5



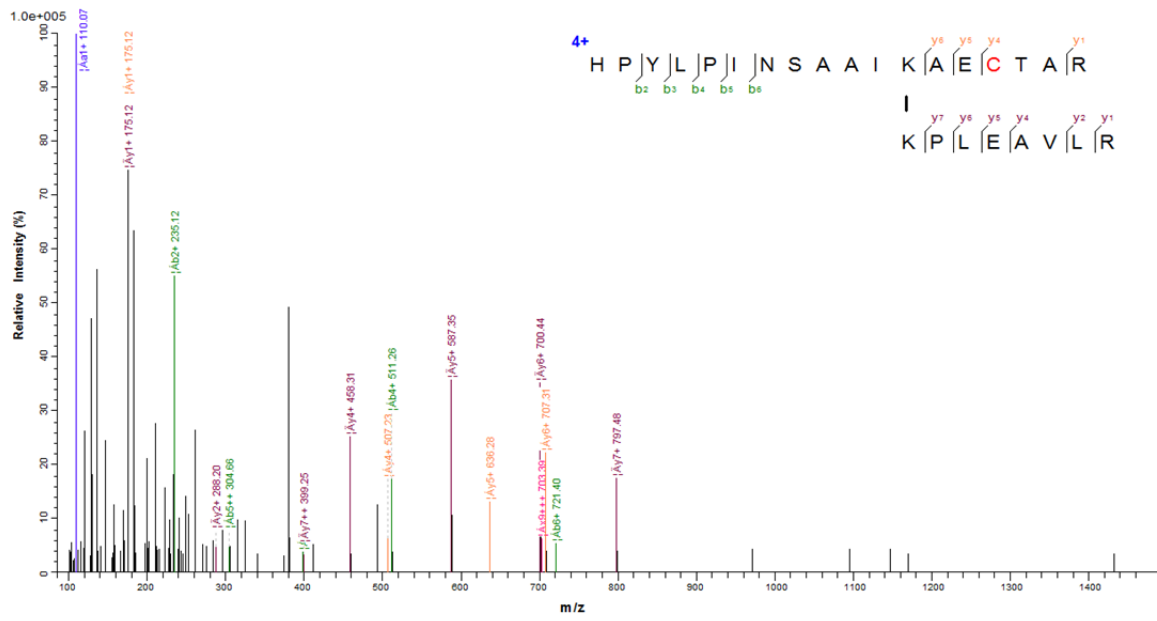
D6



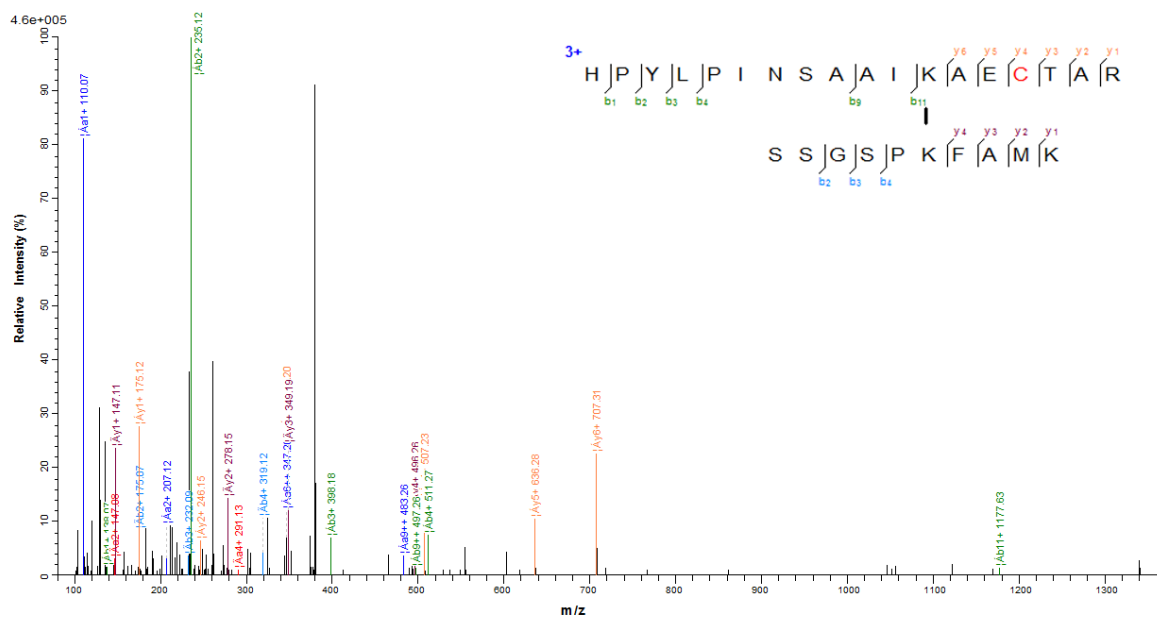
D7



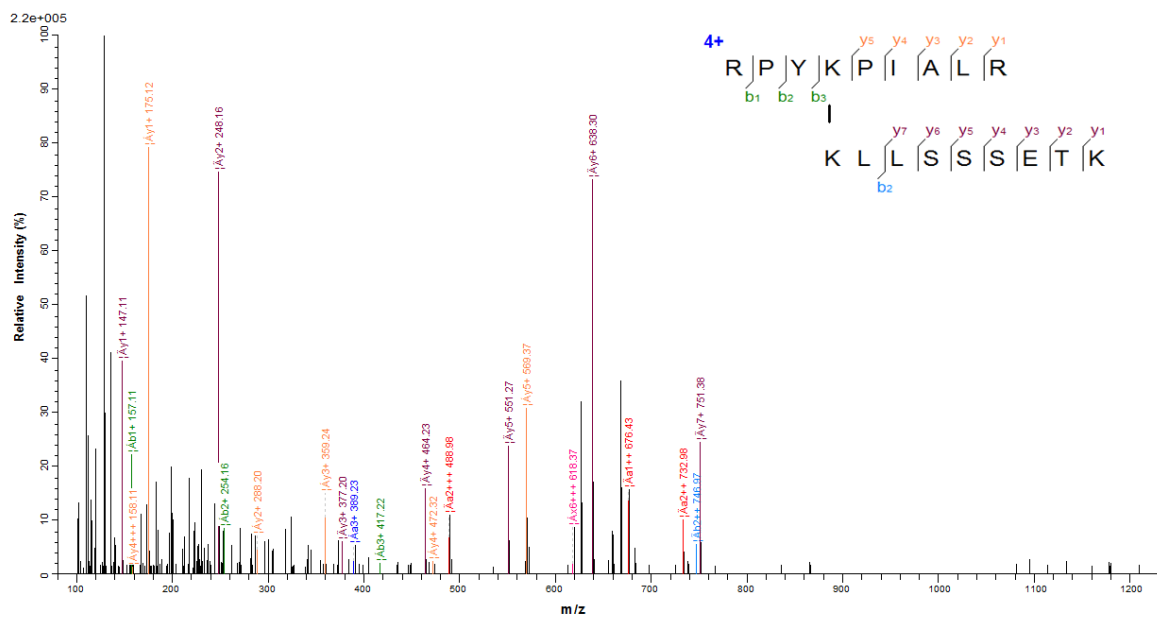
D8



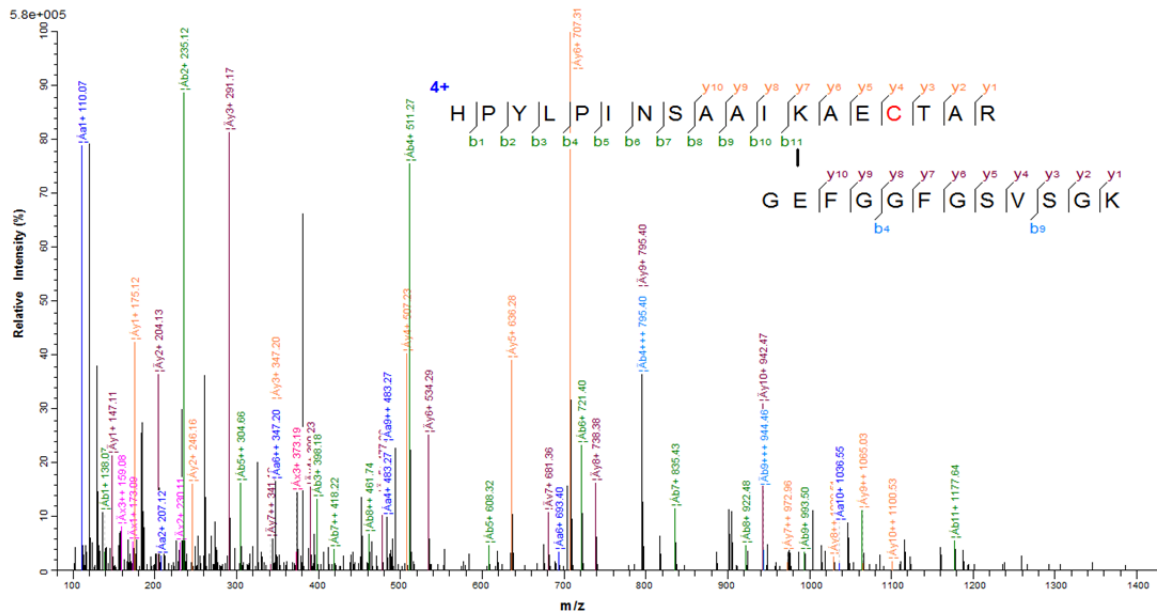
D9



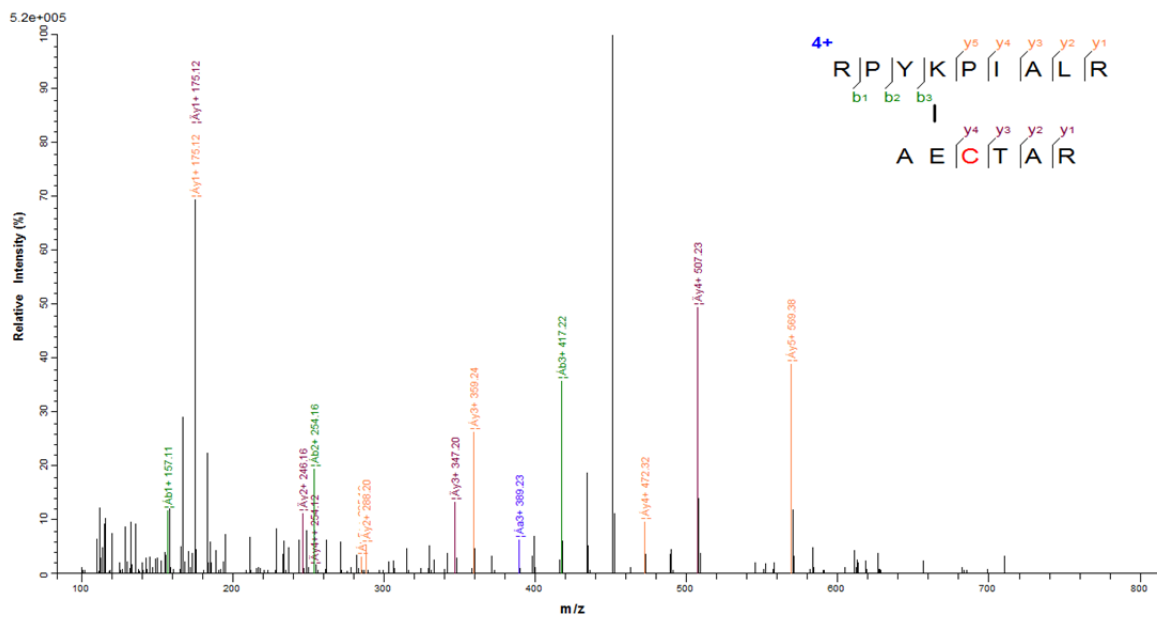
D10



Z1



Z2



Supplementary Figure 3. Fragmentation spectra for the crosslinks identified in this study that were used for the EM-model. The figure panels are labelled according to the 'Id' of the crosslink used in the EM model. Alpha peptide y - and b -ions are labelled in yellow and green, respectively, while the beta peptide y - and b -ions are labelled in russet and cyan, respectively. Cysteine residues coloured in red refers to them carrying the carbamidomethyl modification.