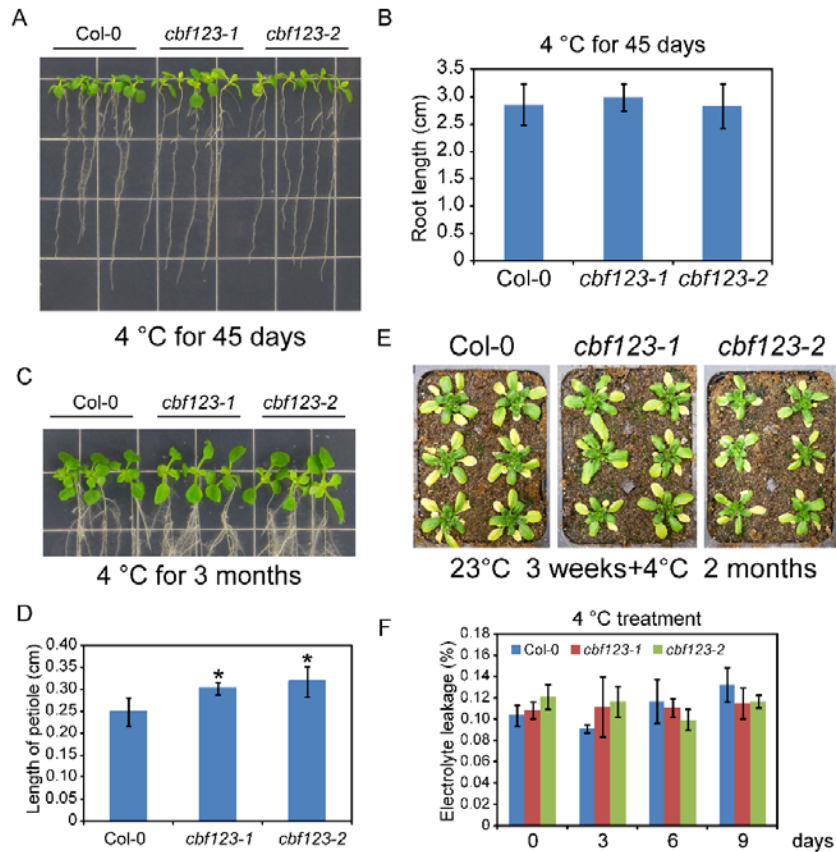


Zhao_Supplemental Figure S1



Supplemental Figure S1. Chilling tolerance was tested for *Col-0*, *cbf123-1* and *cbf123-2*. (A) Three-day-old seedlings grown on a MS medium were transferred to a incubator with 4°C. The plants were photographed after 45 days. (B) Root lengths of plants that had grown at 4°C for 45 days. (C) Phenotype of the leaves of plants that had grown at 4°C for 3 months. (D) Measurement of the petiole length of plants that had grown at 4°C for 3 months. Asterisks indicate statistically significant differences ($P < 0.05$, one-way ANOVA). (E) Three-week-old plants grown under standard condition were transferred to 4°C. The plants were photographed after low temperature treatment for 2 months. (F) Electrolyte leakage after chilling treatment. Three-week-old plants grown under standard condition were transferred to 4°C and the electrolyte leakage was measured at the indicated time point.