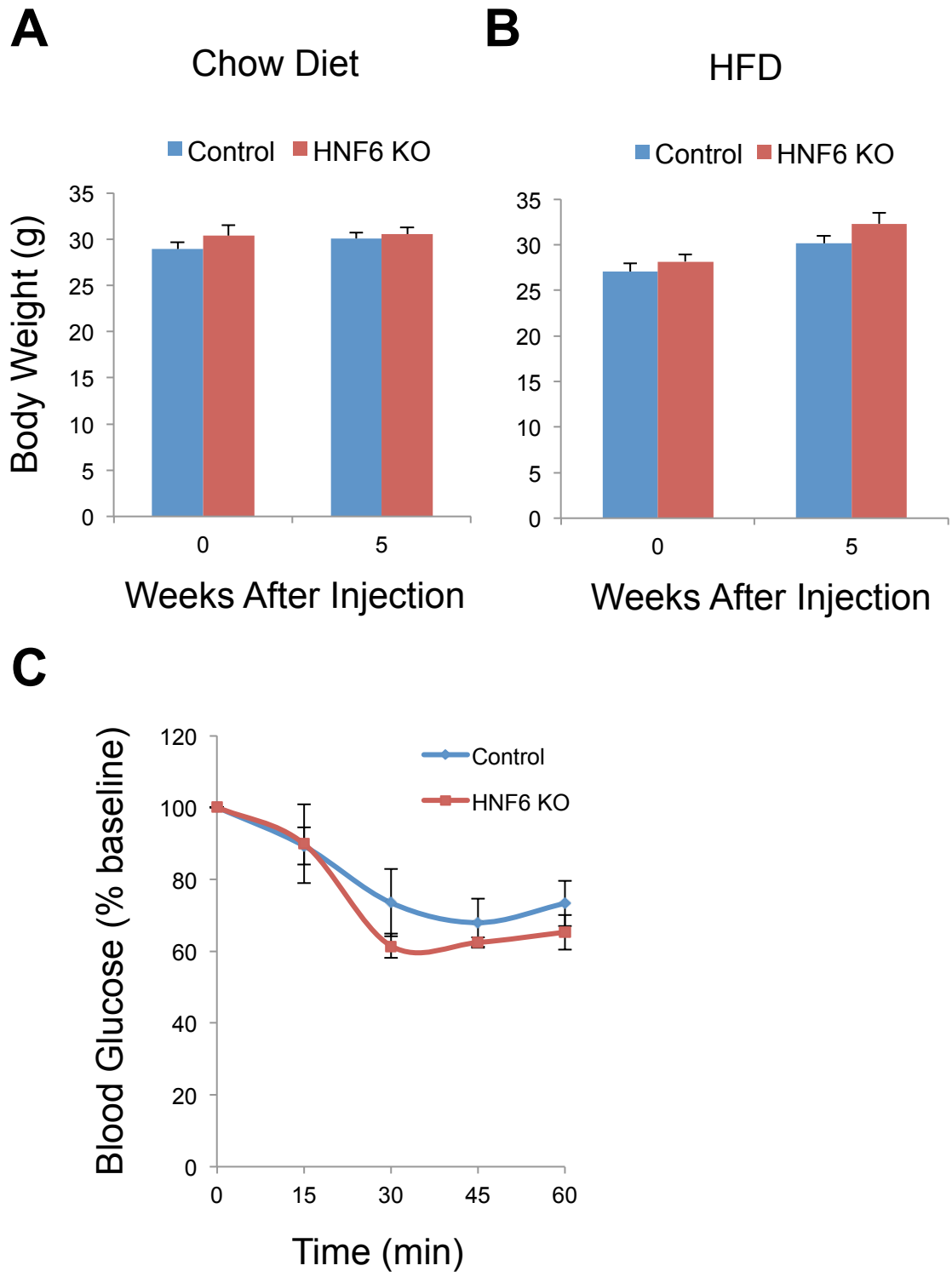


Supplemental Figure S1



Supplemental Figure S1. The depletion of hepatic HNF6 in adult mice did not alter body weight and is slightly more insulin sensitive. (A) Body weight of mice fed normal chow diet. Data are expressed as mean±SEM. n = 6 mice per treatment. (B) Body weight of mice fed high fat diet (HFD). Data are expressed as mean±SEM. n=7 mice per treatment. (C) Results from the insulin tolerance test for mice fed normal chow diet at 4 weeks after injection with the AAV. Data are expressed as mean ±SEM. n=5 mice per treatment.