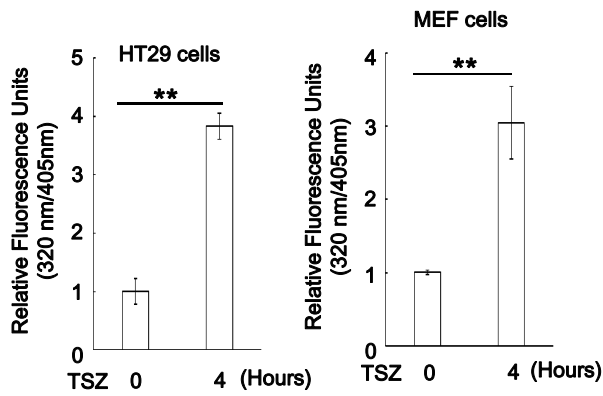
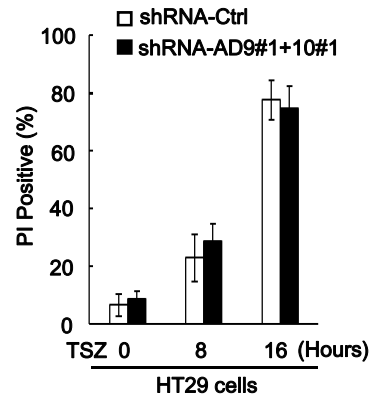


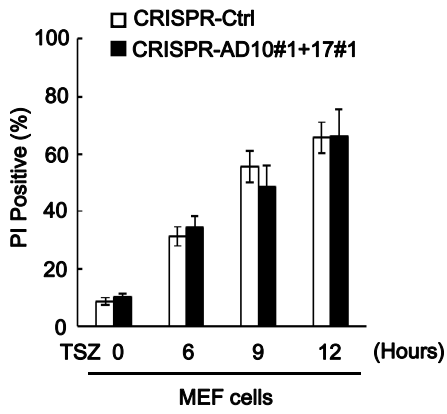
A



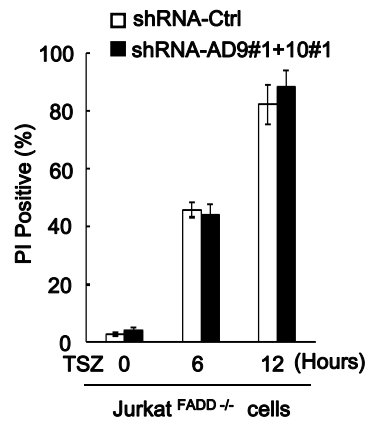
B



C



D



E

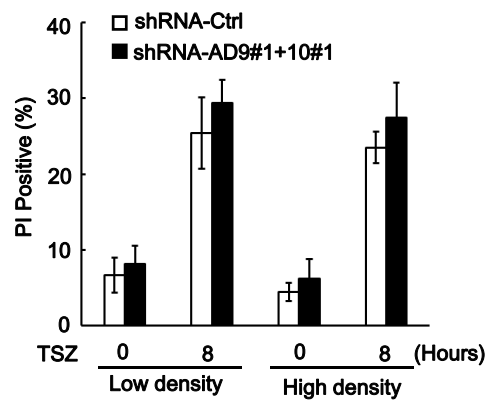
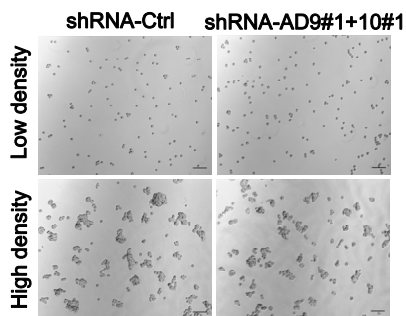


Figure S5

Figure S5 Analysis of TSZ-induced cell death in ADAM metalloproteases knocked down or knockout cells cultured in suspension. (A) Cell-associated metalloprotease activity was measured in HT29 or MEF cells treated with TSZ for 4 hours when cultured in suspension. Results shown are averages \pm s.e.m. from three independent experiments. **, $p < 0.01$. (B) shRNA-Control or shRNA-ADAM9/10 HT29 cells or (C) CRISPR-Control or CRISPR-ADAM10/17 MEF cells were cultured in suspension and treated with TSZ for indicated time points. The cell death was determined by PI staining. (D) shRNA control or ADAM9/10 double knockdown Jurkat ^{FADD}^{-/-} cells were treated with TSZ for indicated time points and cell death was determined by PI staining. (E) shRNA-Control or shRNA-ADAM9/10 HT29 cells were seeded in low density (5×10^4 cells/ml) or high density (5×10^5 cells/ml) overnight and then treated with TSZ for 8 hours. Left, cell morphology and aggregation are shown, Scale bar, 100 μ m; Right, cell death was determined by PI staining. Results shown are averages \pm s.e.m. from three independent experiments.