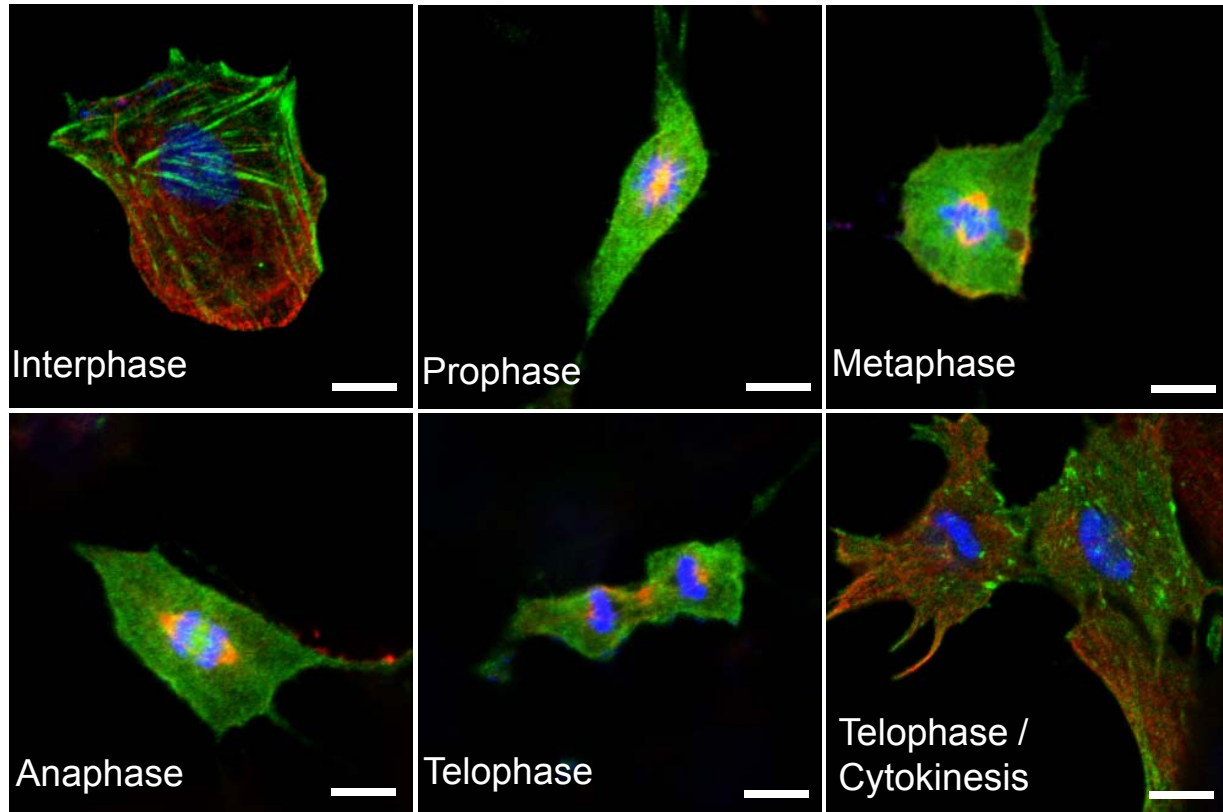


## Supplementary Information



**Supplementary figure S1. Cell cycle stage-dependent distribution of FHL2 protein in KGN cells.** FHL2 protein expression and localization were determined by fluorescent immunohistochemistry. Images were captured with a Laser Scanning Confocal Microscope. FHL2 immunosignal was presented as green and  $\beta$ -tubulin was presented as red color. Nuclei were stained with DAPI (blue). Scale bar: 10 $\mu$ m.