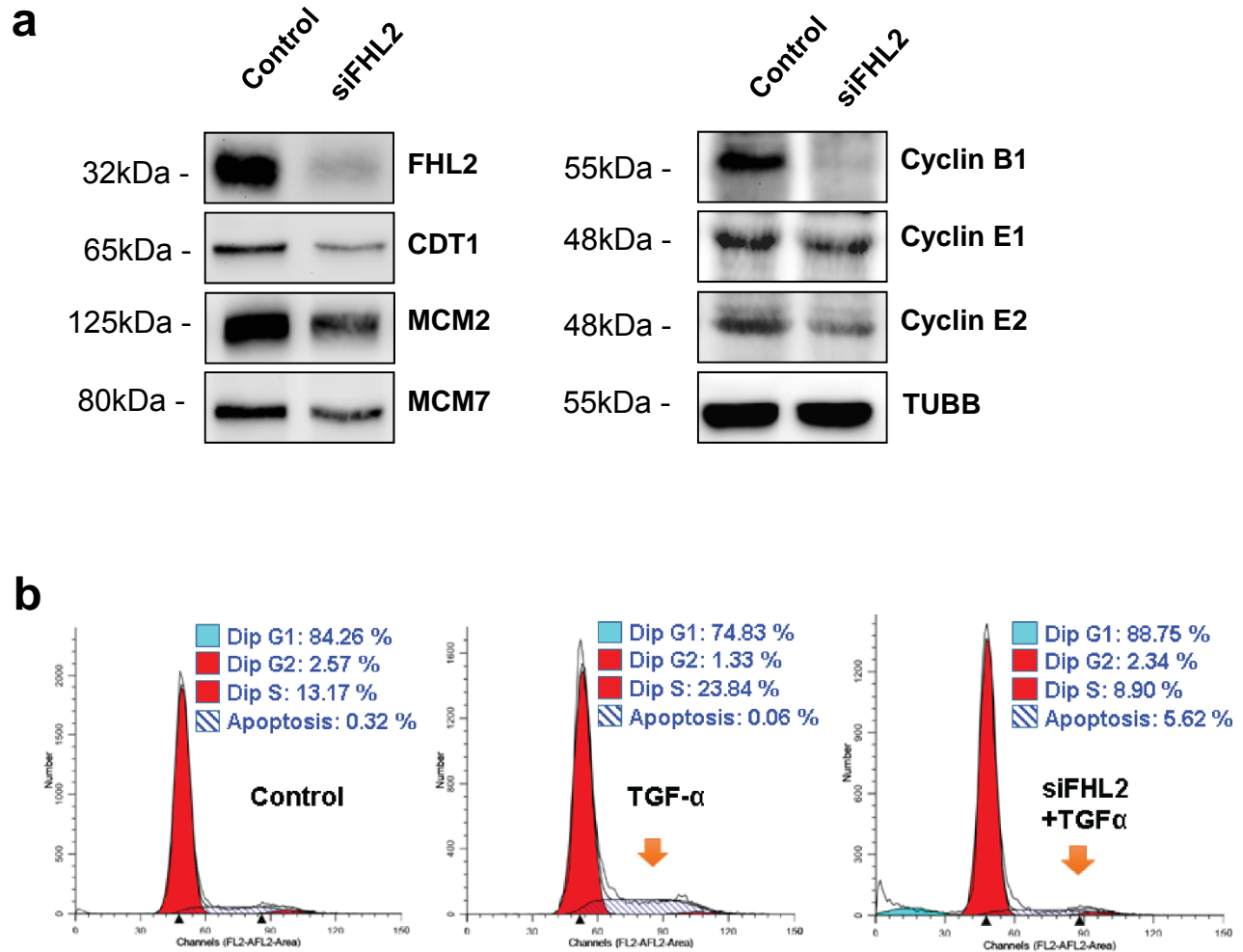


Supplementary Information



Supplementary figure S2. Effect of FHL2 on GCT cell growth. a) Knockdown of FHL2 suppressed expression of pro-proliferation factors. Protein levels were determined by Western blot. β -tubulin (TUBB) was used as a protein loading control. b) Knockdown of FHL2 in KGN cells eliminated TGF α -induced increase in cells in the S phase.