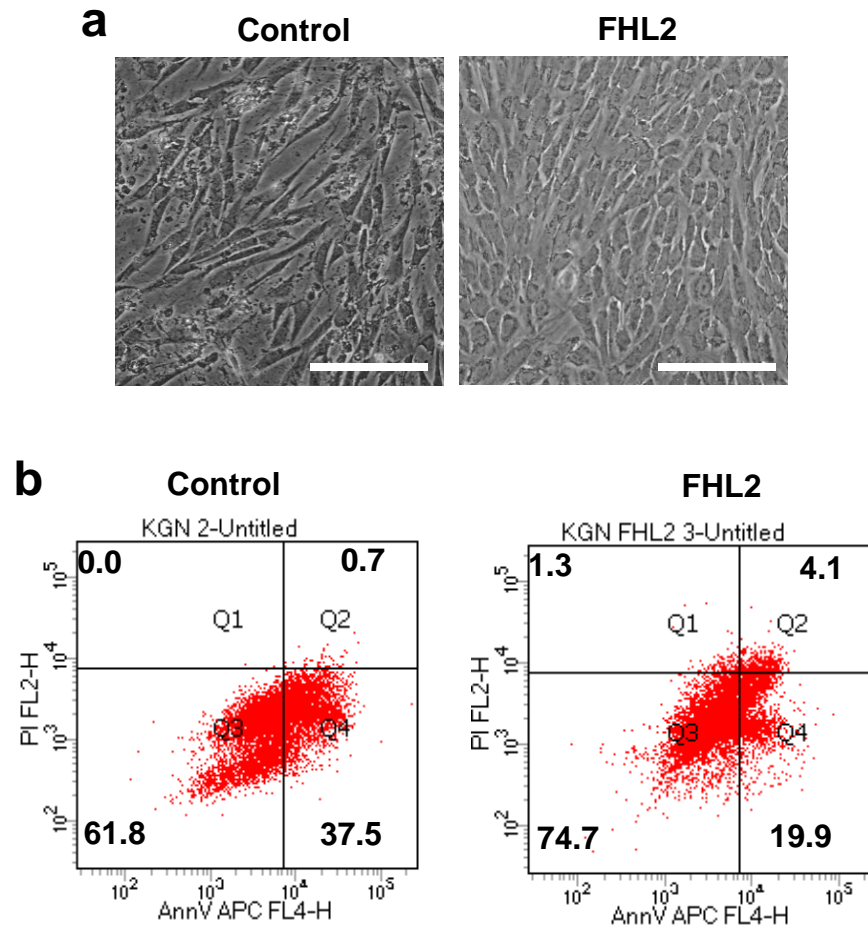


Supplementary Information



Supplementary figure S5. Ectopic expression of FHL2 in GCT cells promote their growth and viability. **a**) Representative images showing morphology of KGN cells transfected with empty vector (control) or FHL2-expressing vector (FHL2). Cells were cultured in serum-free medium for 21 days before morphological analysis. Scale bar: 200 μ m. **b**) Viability of KGN cells transfected with empty vector (control) or FHL2-expressing vector (FHL2). Cells were starved (in serum-free medium) for 21 days and stained with the Annexin V-APC/PI dual staining kit before measuring with flow cytometry. All Experiments were repeated three times and the representative images were shown.