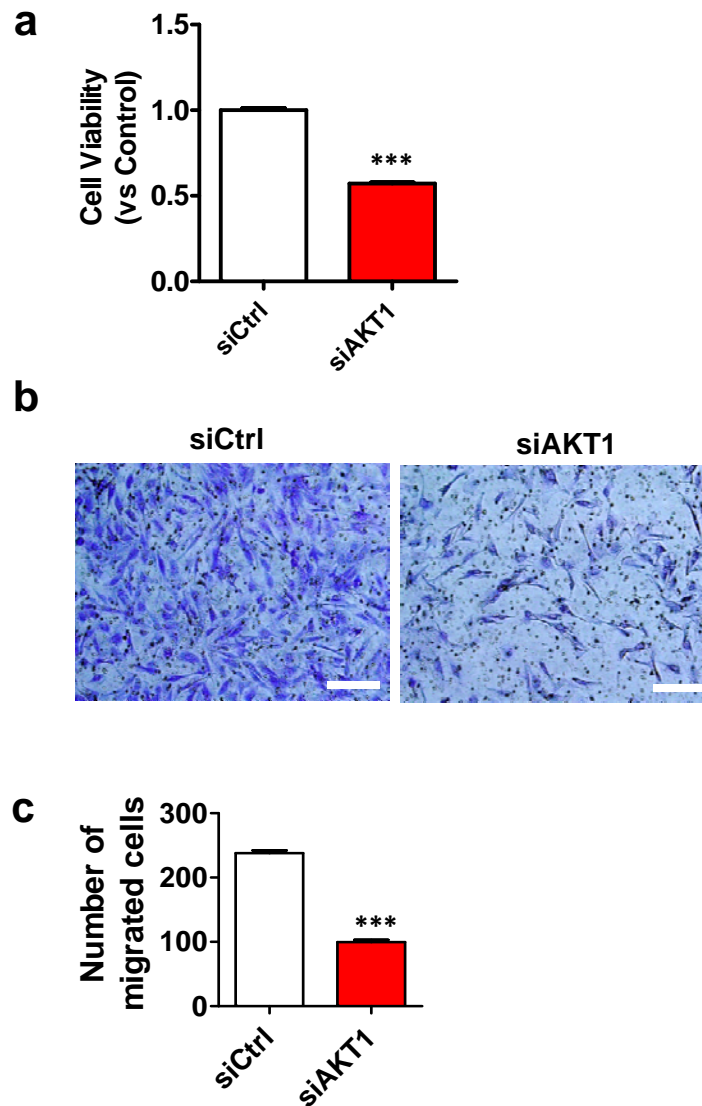


Supplementary Information



Supplementary figure S9. Knockdown of AKT1 and FHL2 in KGN cells results in similar phenotypes. **a)** Change in cell viability in KGN cells transfected with non-targeting control siRNA (siCtrl) or AKT1 siRNA (siAKT1). Cell viability was determined by MTT assay. **b)** Representative images showing migration of KGN cells transfected with non-targeting control siRNA (siCtrl) and AKT1 siRNA (siAKT1). Cell migration was determined using a Transwell migration assay. Scale bar: 200 μ m. **c)** Quantitative result of **b)**. Migrated cells were counted manually under a microscope. Each bar represents mean \pm SEM (n=5). ***: $P < 0.001$, compared with control (siCtrl).