

Supplementary Online Content

Sherva R, Wang Q, Kranzler H, et al. Genome-wide association study of cannabis dependence severity, novel risk variants, and shared genetic risks. *JAMA Psychiatry*. Published online March 30, 2016. doi:10.1001/jamapsychiatry.2016.0036.

eMethods. Description of Samples and Analyses

eFigure 1. Distribution of *DSM-IV* Cannabis Dependence Criteria Counts

eFigure 2. Manhattan and Quintile-Quintile Plots for *DSM-IV* Cannabis Dependence Criteria Count in the Yale-Penn and SAGE African American Cohorts Meta-analysis

eFigure 3. Manhattan and Quintile-Quintile Plots for *DSM-IV* Cannabis Dependence Criteria Count in the Yale-Penn and SAGE European American Cohorts Meta-analysis

eFigure 4. Quintile-Quintile Plot Showing the Observed vs Expected Distribution of *P* Values for MDD for SNPs Associated With Cannabis Dependence

eFigure 5. Quintile-Quintile Plot Showing the Observed vs Expected Distribution of *P* Values for Other Psychiatric Disorders for SNPs Associated With Cannabis Dependence

eTable 1. SNPs Associated With *DSM-IV* Cannabis Dependence With $P < 1.0 \times 10^{-5}$ in the African American, European American, or Combined Meta-analysis by Analysis Group and Including Secondary Analysis Results

eTable 2. Pleiotropy Tests Between Cannabis Dependence and 5 Psychiatric Disorders in African American and European American Participants

This supplementary material has been provided by the authors to give readers additional information about their work.

eMethods. Description of Samples and Analyses

Description of Yale-Penn sample

Families were ascertained from treatment centers and advertisements that recruited affected sibling pairs (ASPs) meeting Diagnostic and Statistical Manual of Mental Disorders, 4th Edition (DSM-IV) criteria for CD or OD. Probands were excluded from further study if they had ever received a clinical diagnosis of a major psychotic illness (for example, schizophrenia or schizoaffective disorder). Other family members of the ASPs were recruited when available, regardless of affection status. The case–control subjects were recruited from substance abuse treatment centers and through advertisements at the University of Connecticut Health Center, Yale University School of Medicine, the Medical University of South Carolina, the University of Pennsylvania, and McLean Hospital.

Additional quality control information for the Yale-Penn sample

Genetic relationships were examined by calculating pairwise identity by descent (IBD) proportion estimates using PLINK¹. Pairs of individuals whose IBD proportions did not match their reported genetic relationship were assigned to two different families and pairs of individuals who shared more than 25% of their alleles IBD were assigned to the same family. Self-reported males with X chromosome heterozygosity > 20% and self-reported females with heterozygosity < 20% were excluded unless their true identity could be determined. These analyses also identified instances where two identical DNA marker profiles were linked to two different interview forms. When demographic information (sex, date of birth, number of reported children) was consistent across interviews, one sample was randomly removed from analysis. Both samples were removed if the demographic information was inconsistent across interviews. In total, 104 DNA samples were removed from analysis due to an inability to definitively assign them to the correct phenotype data.

Description of SAGE sample

The COGA sample² is a set of unrelated individuals recruited in Indiana, New York, St. Louis, Connecticut, Iowa, and San Diego selected for genotyping from a larger set of 8,000 subjects. Cases met criteria for DSM-IV alcohol dependence. FSCD² contained cases and controls from the greater St. Louis metropolitan area. All cases met criteria for DSM-IV alcohol dependence and most also met criteria for DSM-IV cocaine dependence. Controls were from the same

communities and had consumed alcohol, but had no lifetime history of dependence on any substance. A subgroup of FSCD subjects was not alcohol dependent, but had a lifetime diagnosis of DSM-IV CAD or dependence on another illicit drug. COGEND³ subjects were recruited in MO and MI. Cases met criteria for DSM-IV alcohol and/or nicotine dependence. Control subjects were selected from the non-dependent population and did not meet criteria for alcohol, nicotine, or illicit drug dependence.

Description of the ICGHD Sample

All International Consortium on the Genetics of Heroin Dependence subjects with informative DSM-IV CAD criteria counts came from The Comorbidity and Trauma Study,⁴ a retrospective case-control study examining genetic and environmental factors contributing to heroin dependence liability. Case participants were recruited from maintenance clinics in the greater Sydney area. Control participants were recruited from employment and community centers, open street malls, and local press servicing the same geographical area as the opioid maintenance treatment clinics and either denied recreational use of opioids or had used these drugs recreationally fewer than 11 times lifetime. The prevalence in these individuals of non-opioid illicit drug dependence and illicit drug dependence as well as childhood trauma exposure and other psychiatric disorders is elevated considerably versus estimates of similar measures in Australian general population samples. Participants provided blood samples as a source of DNA and completed a comprehensive psychiatric diagnostic interview based on the Semi-Structured Assessment of the Genetics of Alcoholism - Australia (SSAGA-OZ) augmented with sections drawn from other instruments assessing childhood trauma exposure, family history, and screening for borderline personality disorder.

Genotyping and Quality Control

The entire Yale-Penn sample was genotyped using one of two genotyping arrays: (1) the Illumina HumanOmni1-Quad v1.0 microarray containing 988,306 autosomal SNPs (Yale-Penn.1: performed at the Center for Inherited Disease Research (CIDR) and the Yale Center for Genome Analysis), (2) the Illumina Infinium Human Core Exome microarray (Yale-Penn.2 and Yale-Penn.3: performed at the Yale Center for Genome Analysis), which contains 265,919 exome-focused SNPs and approximately 240,000 tagging SNPs which allow genome-wide imputation. The SAGE samples were genotyped using the Illumina Human 1M array containing 1,069,796 total SNPs and the ICGHD samples were genotyped using the Illumina

Human610_Quadv1_B. All QC and subsequent analyses were performed separately within individuals genotyped on the platforms listed above. Samples and SNPs with genotype call rates < 98% were removed. Additional samples were removed due to excess heterozygosity taken to indicate possible contamination, and identification as possible population outliers based on the calculation of principal components. Genotypes were called using GenomeStudio software V2011.1 and genotyping module V1.8.4 (Illumina, San Diego, CA, USA). SNPs with significantly different allele frequencies (within population) across genotyping centers were set to missing prior to imputation. After data cleaning and quality control, (Yale-Penn.1: 711,711; Yale-Penn.2: 261,746; Yale-Penn.3: 327,405, SAGE: 726,191, ICGHD: 551,134) SNPs and (Yale-Penn.1: 5,697; Yale-Penn.2: 2,591; Yale-Penn.3: 683, SAGE: 3,890, ICGHD: 1,893) samples remained for imputation.

To verify and correct potential misclassification of self-reported race, we compared the GWAS data from all subjects with genotypes from the 1000 Genomes reference panel (1000 Genomes Project, 2012; <http://www.1000genomes.org/>), which contains phased haplotypes for 1,094 individuals of various ancestries: 379 of European descent (CEU, FIN, GBR, IBS, and TCI), 286 of Asian descent (CHB, JPT, and CHS), 181 admixed American samples (PUR, CLM, and MXL), and 246 samples of African descent (ASW, LWK, YR). Principal components (PC) analysis was conducted in the entire GWAS sample using Eigensoft^{5,6} and SNPs that were common to the each of the five individual genotyping arrays and the 1000 Genomes panel (after pruning the GWAS SNPs for linkage disequilibrium (LD), $r^2 > 80\%$) to characterize the underlying genetic architecture of the samples. Individuals were clustered according to the 1000 Genomes cohort whose centroid was nearest across the first 10 PCs. Those samples that didn't cluster with either AAs or EAs were removed from downstream analysis. We then conducted PC analyses within the two remaining groups and removed any outliers beyond three standard deviations from the mean. The first three PCs were used in all subsequent analyses to correct for residual population stratification.

Genotype Imputation

SNP genotype imputation was performed in the Yale-Penn, SAGE, and ICGHD GWAS cohorts with IMPUTE2⁷ using genotyped SNPs and the March 2012 1000 Genomes reference panel (1000 Genomes Project, 2012; <http://www.1000genomes.org/>), which contains phased haplotypes for 1,094 individuals of various ancestries: 379 of European descent (CEU, FIN, GBR, IBS, and TCI), 286 of Asian descent (CHB, JPT, and CHS), 181 admixed American samples (PUR, CLM, and MXL), and 246 samples of African descent (ASW, LWK, YR). EA and AA samples were imputed separately within each cohort.

Power

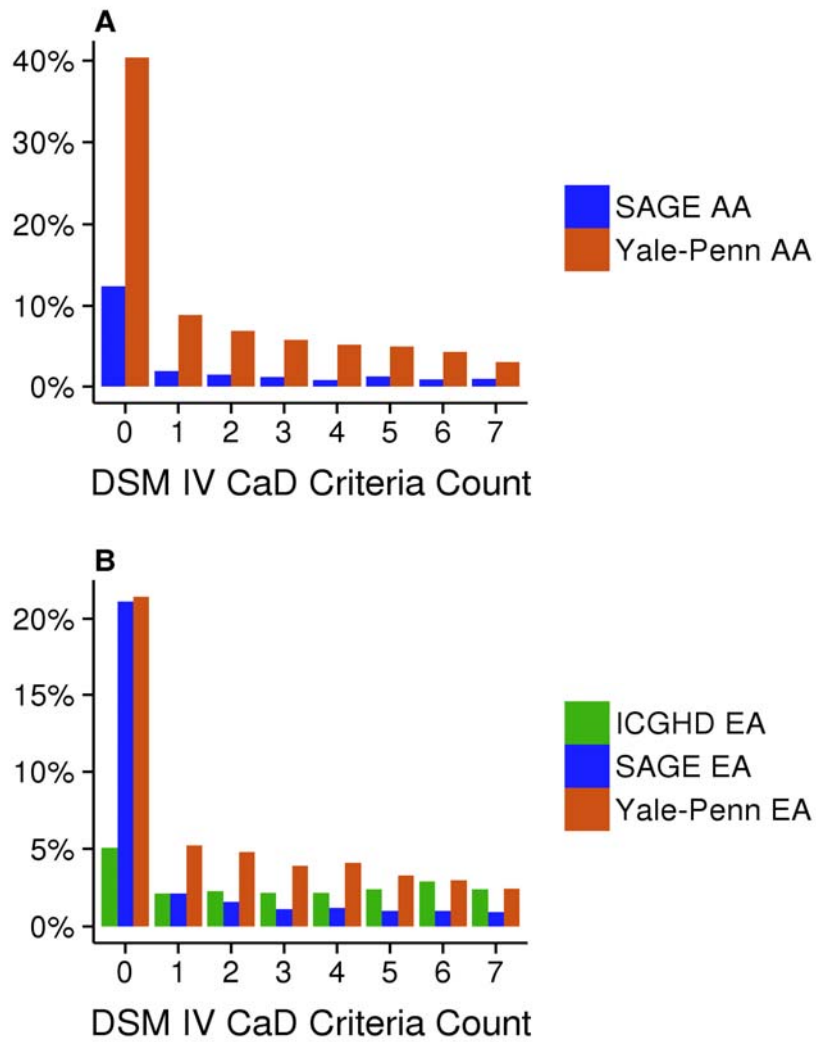
Power varied according to cohort and population. The largest (N=4,750) and best powered subsample was Yale-Penn AAs genotyped on the Illumina HumanOmni-Quad v1.0, in which we had 80% power to detect SNPs explaining 0.9% of the total variation in CAD symptom count at $p \leq 5 \times 10^{-8}$. SAGE AAs (N=1,250) had the lowest power, able to detect GWS SNPs explaining 3.2% of the total trait variance.

eReferences

1. Purcell S, Neale B, Todd-Brown K, et al. PLINK: a tool set for whole-genome association and population-based linkage analyses. *Am J Hum Genet.* 2007;81(3):559-575. doi: 10.1086/519795.
2. Bierut LJ, Strickland JR, Thompson JR, Afful SE, Cottler LB. Drug use and dependence in cocaine dependent subjects, community-based individuals, and their siblings. *Drug Alcohol Depend.* 2008;95(1-2):14-22.
3. Bierut LJ, Madden PA, Breslau N, et al. Novel genes identified in a high-density genome wide association study for nicotine dependence. *Hum Mol Genet.* 2007 Jan 1;16(1):24-35. Epub 2006 Dec 7.
4. Maloney E, Degenhardt L, Darke S, Mattick RP, Nelson E. Suicidal behaviour and associated risk factors among opioid-dependent individuals: a case-control study. *Addiction.* 2007 Dec;102(12):1933-41. Epub 2007 Sep 3.
5. Price AL, Patterson NJ, Plenge RM, Weinblatt ME, Shadick NA, Reich D. Principal components analysis corrects for stratification in genome-wide association studies. *Nat Genet.* 2006;38(8):904-909. doi: 10.1038/ng1847.

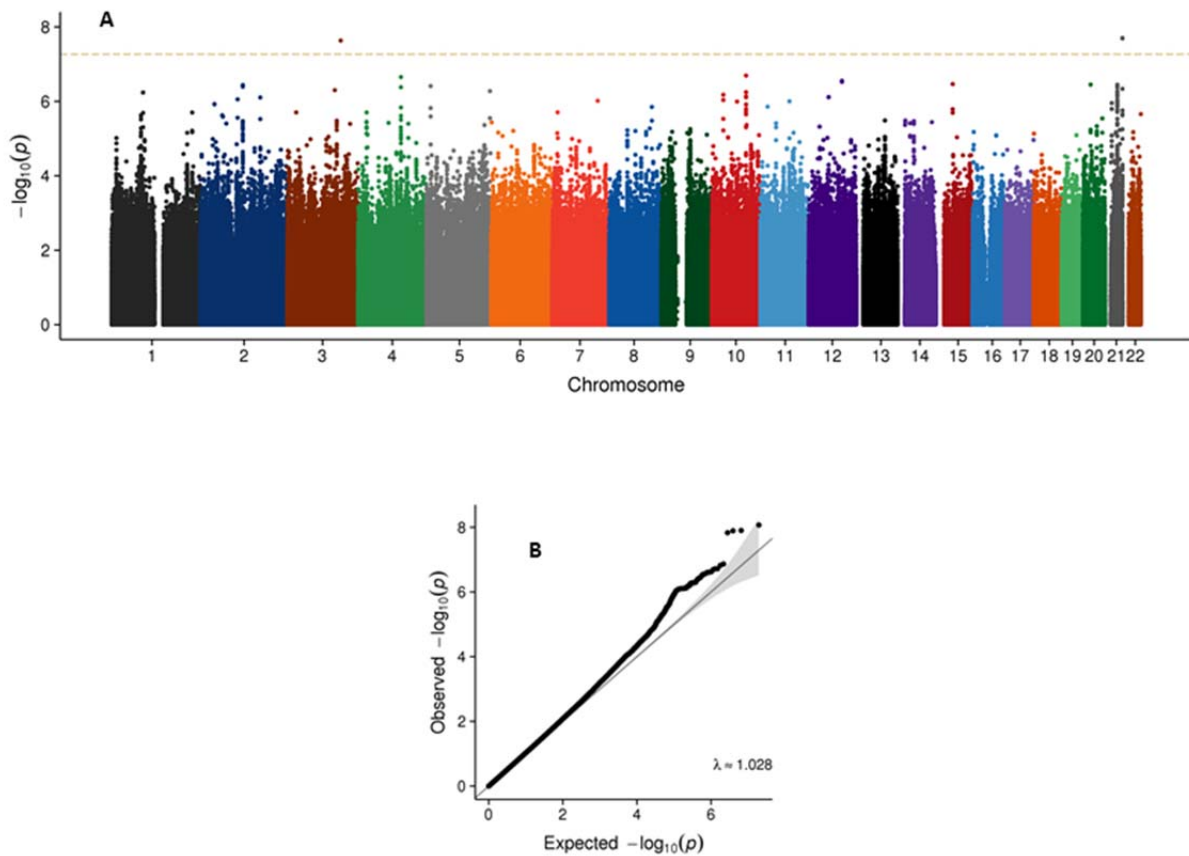
6. Patterson N, Price AL, Reich D. Population structure and eigenanalysis. *PLoS Genet.* 2006;2(12):e190. doi: 06-PLGE-RA-0101R3 [pii].
7. Howie BN, Donnelly P, Marchini J. A flexible and accurate genotype imputation method for the next generation of genome-wide association studies. *PLoS Genet.* 2009;5(6):e1000529. doi: 10.1371/journal.pgen.1000529.

eFigure 1. Distribution of DSM-IV cannabis dependence criteria counts



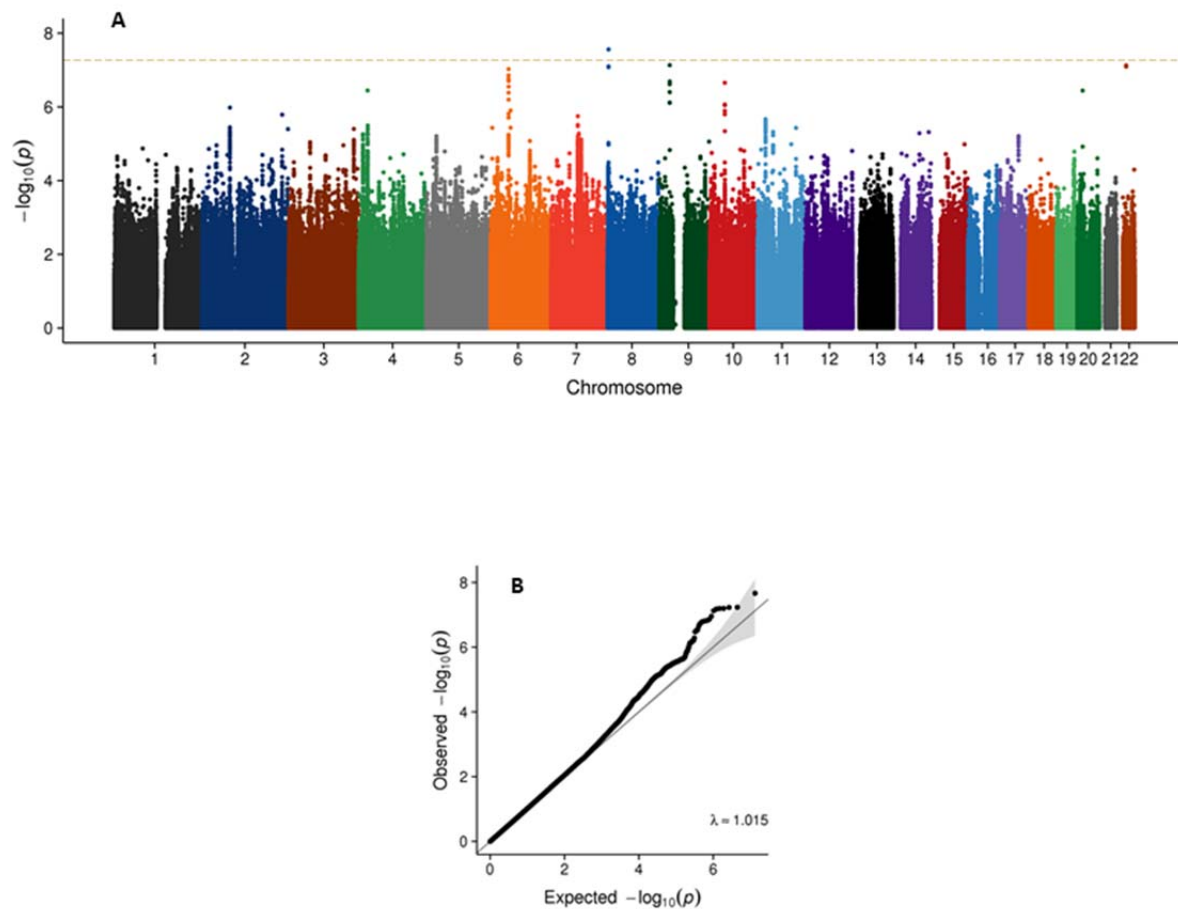
Distribution of DSM-IV cannabis dependence criteria counts in AAs (Panel A) and EAs (Panel B).

eFigure 2. Manhattan and quantile-quantile plots for DSM-IV cannabis dependence criteria count in the Yale-Penn.1-2+SAGE AA meta-analysis



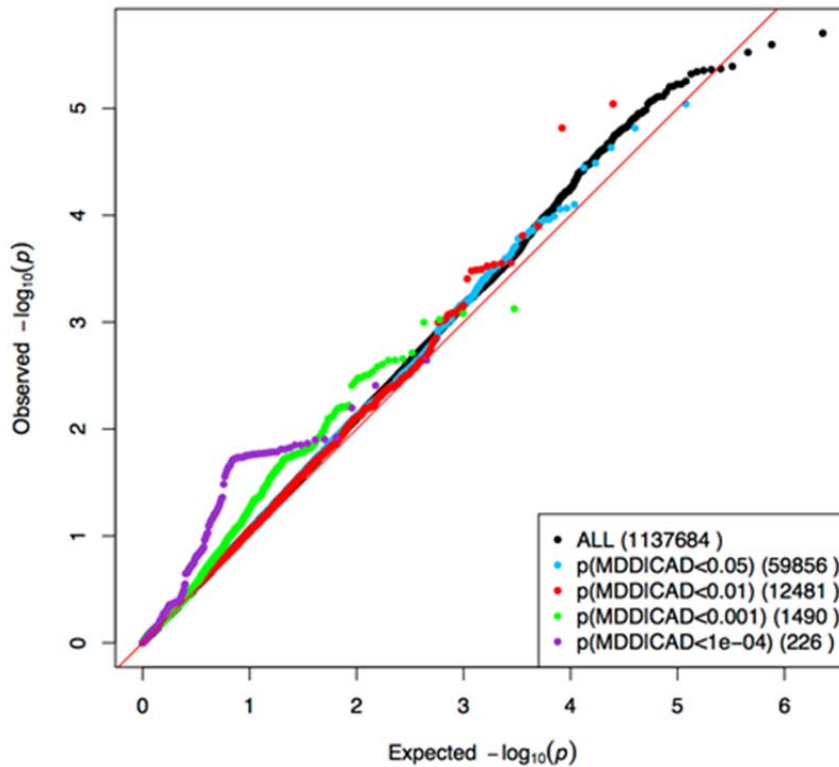
Manhattan and quantile-quantile plots for SNP minor allele dosage linearly regressed on DSM-IV cannabis dependence criteria count in the Yale-Penn+SAGE AA meta-analysis. The gold horizontal line corresponds to the $-\log_{10}$ of 5×10^{-8} , the threshold for genome-wide significance. The quantile-quantile plot shows the distribution of observed p-values compared to the expected distribution based on a uniform (0,1) distribution. λ is the ratio of the observed to the expected p-value at the median SNP.

eFigure 3. Manhattan and quantile-quantile plots for DSM-IV cannabis dependence criteria count in the Yale-Penn.1-2+SAGE EA meta-analysis



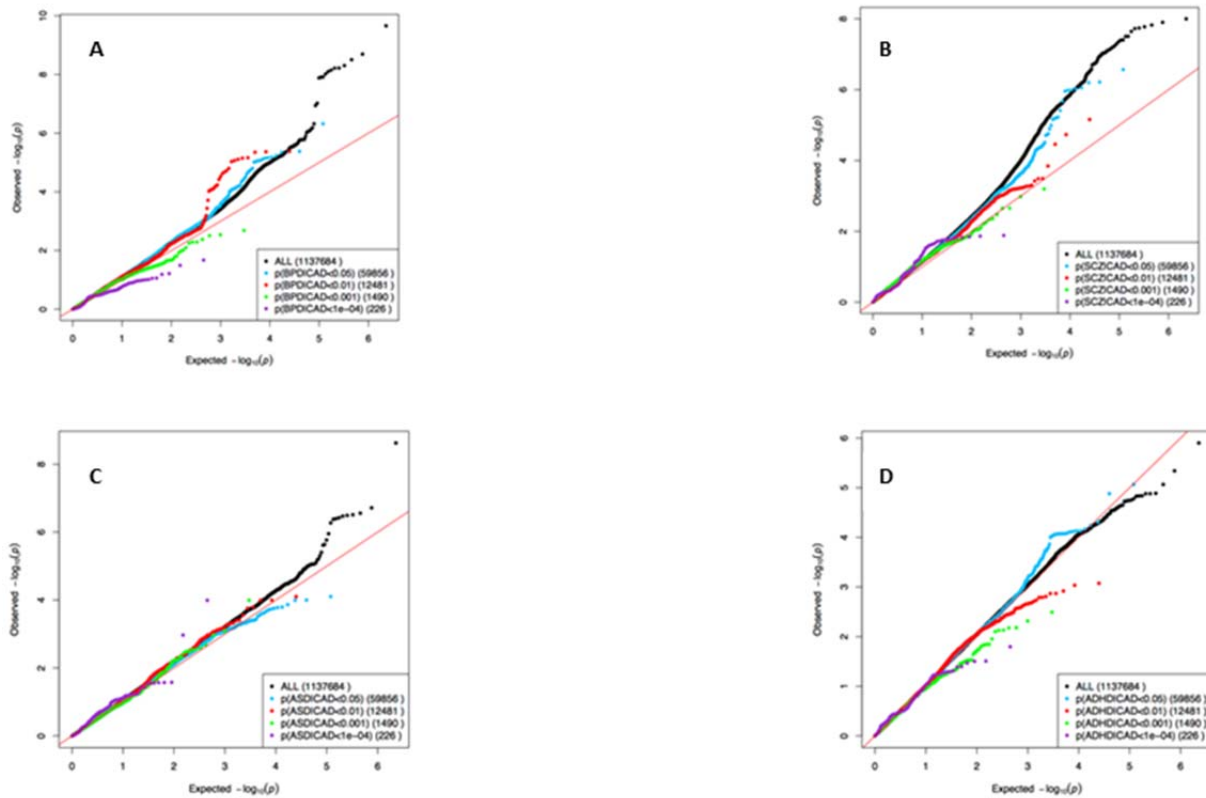
Manhattan and quantile-quantile plots for SNP minor allele dosage linearly regressed on DSM-IV cannabis dependence criteria count in the Yale-Penn+SAGE EA meta-analysis. The gold horizontal line corresponds to the $-\log_{10}$ of 5×10^{-8} , the threshold for genome-wide significance. The quantile-quantile plot shows the distribution of observed p-values compared to the expected distribution based on a uniform (0,1) distribution. λ is the ratio of the observed to the expected p-value at the median SNP.

eFigure 4. Quantile-quantile plot showing the observed vs. expected distribution of p-values for major depressive disorder for SNPs associated with cannabis dependence



Quantile-quantile plot showing the observed distribution of p-values for major depressive disorder from the Psychiatric Genomics Consortium sample for subsets of SNPs associated with cannabis dependence in the meta-analysis of Yale-Penn and SAGE (black dots represent all SNPs with a valid association result for both cannabis dependence and major depressive disorder, blue dots represent SNPs associated with cannabis dependence at $P < .05$, red dots at $P < .01$, green dots at $P < .001$, and purple dots at $P < .0001$) compared to the expected distribution based on a uniform (0,1) (red line). The number of SNPs observed at each threshold is shown in parentheses in the inset.

Figure 5. Quantile-quantile plot showing the observed vs. expected distribution of p-values for other psychiatric disorders for SNPs associated with cannabis dependence



Quantile-Quantile plots showing no enrichment for association with bipolar affective disorder (panel A), schizophrenia (panel B), autism spectrum disorder (panel C), and attention deficit hyperactivity disorder (panel D) among SNPs associated with cannabis dependence at various p-value thresholds (black dots represent all SNPs with a valid association result for both cannabis dependence and the other trait, blue dots represent SNPs associated with cannabis dependence at $P < .05$, red dots at $P < .01$, green dots at $P < .001$, and purple dots at $P < .0001$) compared to the expected distribution based on a uniform (0,1) (red line). The number of SNPs observed at each p-value threshold is shown in parentheses in the inset. The P values for the other psychiatric disorders are from the Psychiatric Genomics Consortium.

eTable 1. SNPs associated with DSM-IV cannabis dependence with $p < 1.0 \times 10^{-5}$ in the AA, EA or combined meta-analysis by analysis group and including secondary analysis results.

^abase pair position in human genome assembly build 37

^beffect allele

^creference allele

^deffect direction of A1. The order of the symbols is: Yale-Penn OMNI AA, SAGE AA, Yale-Penn HCE AA, Yale-Penn OMNI EA, SAGE EA, Yale-Penn HCE EA.

^eAll P = p-value from the primary analysis model with cannabis unexposed individuals included

^fExp P = p-value from model with only cannabis exposed individuals

^gAdj P = p-value from primary analysis model adjusted for the DSM-IV criteria counts for alcohol, cocaine, and opioid dependence.

P-values < 0.05 are in bold italics.

SNP	Gene	Yale-Penn				SAGE				Yale-Penn HCE		
		AA		EA		AA		EA		AA		EA
		Exp P	Adj P	Exp P	Adj P	Exp P	Adj P	Exp P	Adj P	Exp P	Adj P	Exp P
rs10782635	RP11-415A20.1-ST6GALNAC5	9.46E-05	7.16E-05	2.86E-01	4.36E-01	3.62E-01	6.60E-02	2.06E-01	7.89E-01	9.75E-03	4.46E-02	1.00E+00
rs10873920	RP11-415A20.1-ST6GALNAC5	9.44E-05	7.14E-05	2.85E-01	4.36E-01	3.62E-01	6.60E-02	2.05E-01	7.89E-01	9.75E-03	4.46E-02	1.00E+00
chr1:212183114:l	INTS7	3.13E-02	7.10E-02	NA	NA	2.05E-07	2.11E-03	NA	NA	8.08E-01	9.03E-01	1.04E-01
rs141482228	INTS7	3.22E-02	5.89E-02	NA	NA	8.84E-10	1.05E-05	NA	NA	5.73E-01	6.74E-01	1.16E-01
rs77349458	SNORA26,INTS7	1.59E-02	4.70E-02	NA	NA	1.57E-07	3.07E-03	NA	NA	9.86E-01	8.02E-01	1.39E-01
rs78450308	INTS7,DTL	1.42E-02	1.96E-02	NA	NA	2.16E-05	9.29E-03	NA	NA	3.56E-01	2.16E-01	3.66E-02
rs147434712	RN7SKP27,AC096570.1-RN7SKP27	3.79E-05	9.89E-05	NA	NA	1.96E-01	2.59E-01	NA	NA	7.74E-02	5.62E-02	NA
rs114383460	RN7SL96P,ARHGEF33	1.01E-04	4.47E-04	NA	NA	4.44E-03	4.86E-02	NA	NA	2.33E-01	1.89E-01	NA
rs115913953	RN7SL96P,ARHGEF33	1.01E-04	4.47E-04	NA	NA	4.44E-03	4.86E-02	NA	NA	2.33E-01	1.89E-01	NA
rs115427433	RN7SL96P,ARHGEF33	1.04E-04	4.56E-04	NA	NA	4.48E-03	4.91E-02	NA	NA	2.36E-01	1.92E-01	NA
rs73930448	MTA3,MTA3,MTA3,MTA3,MTA3	2.62E-03	3.63E-02	1.34E-01	1.77E-01	3.02E-05	3.50E-03	9.90E-01	8.43E-01	5.66E-01	1.48E-01	5.73E-01
rs77448142	RPS20P10,RPS20P10-CYP26B1	7.47E-02	9.42E-02	NA	NA	2.13E-07	3.27E-04	NA	NA	8.80E-01	5.98E-01	NA
rs192238154	AC084149.1-AC105399.2	6.31E-01	3.44E-01	1.10E-04	1.98E-04	3.87E-01	4.70E-01	2.15E-03	4.85E-02	2.79E-01	4.51E-01	6.37E-01
rs74261103	AC084149.1-AC105399.2	7.44E-01	5.26E-01	2.78E-05	2.44E-05	6.55E-01	7.84E-01	2.97E-03	9.29E-02	3.04E-01	4.40E-01	8.42E-01
rs13386612	AC084149.1-AC105399.2	6.48E-01	5.01E-01	3.11E-05	2.64E-05	3.41E-01	4.66E-01	2.94E-03	9.27E-02	3.56E-01	4.85E-01	8.84E-01
rs10181488	AC084149.1-AC105399.2	6.45E-01	5.01E-01	2.92E-05	2.46E-05	3.33E-01	4.58E-01	2.94E-03	9.27E-02	3.61E-01	4.89E-01	8.80E-01
rs1487036	AC084149.1-AC105399.2	8.73E-01	4.87E-01	4.70E-05	3.48E-05	5.80E-01	5.82E-01	3.01E-03	1.14E-01	2.93E-01	3.91E-01	7.72E-01
rs2129493	AC084149.1-AC105399.2	8.07E-01	7.47E-01	5.69E-05	4.34E-05	3.92E-01	5.55E-01	2.57E-03	1.13E-01	2.97E-01	4.16E-01	7.33E-01
rs1872786	AC084149.1-AC105399.2	8.03E-01	7.45E-01	1.15E-04	9.66E-05	4.05E-01	6.00E-01	2.29E-03	1.23E-01	2.76E-01	3.67E-01	7.42E-01
rs1872787	AC084149.1-AC105399.2	7.57E-01	8.01E-01	1.16E-04	8.91E-05	4.02E-01	6.36E-01	1.88E-03	1.03E-01	2.81E-01	3.78E-01	7.67E-01
rs12617011	AC084149.1-AC105399.2	7.92E-01	7.47E-01	1.10E-04	9.10E-05	4.00E-01	6.14E-01	2.32E-03	1.32E-01	2.75E-01	3.64E-01	7.85E-01
rs12621150	AC105399.2-AC073628.1	3.59E-01	2.82E-01	6.57E-05	8.07E-05	8.03E-01	9.76E-01	2.32E-04	4.23E-02	3.46E-01	2.98E-01	7.64E-01
rs2901857	AC105399.2-AC073628.1	9.34E-01	5.43E-01	1.89E-04	2.45E-04	7.54E-01	5.75E-01	3.32E-04	4.75E-02	4.12E-01	4.79E-01	6.84E-01
rs1979560	AC105399.2-AC073628.1	9.37E-01	5.43E-01	1.87E-04	2.42E-04	7.61E-01	5.78E-01	3.12E-04	4.64E-02	4.07E-01	4.76E-01	6.78E-01
rs144605126	AC073987.1	3.30E-02	3.13E-02	NA	NA	1.13E-03	1.15E-04	NA	NA	1.70E-04	7.56E-03	NA
rs115750691	AC073987.1	5.42E-02	5.08E-02	NA	NA	2.32E-03	2.12E-04	NA	NA	3.05E-04	1.64E-02	NA
rs75966817	AC092170.1-AC009312.1	2.13E-03	1.56E-02	NA	NA	6.30E-03	7.14E-02	NA	NA	7.02E-03	5.81E-03	NA
rs77627012	AC092170.1-AC009312.1	1.05E-03	3.63E-03	NA	NA	2.48E-03	3.36E-02	NA	NA	1.54E-03	1.03E-03	NA
rs113582837	AC092170.1-AC009312.1	9.65E-04	3.20E-03	NA	NA	2.15E-03	2.94E-02	NA	NA	1.64E-03	1.09E-03	NA
rs115195999	AC092170.1-AC009312.1	6.00E-04	2.27E-03	NA	NA	2.70E-03	3.41E-02	NA	NA	1.57E-03	9.09E-04	NA
rs74950612	AC092170.1-AC009312.1	1.58E-02	4.02E-02	NA	NA	1.32E-03	1.28E-02	NA	NA	7.89E-04	1.33E-03	NA
rs76850313	AC092170.1-AC009312.1	6.33E-04	2.02E-03	NA	NA	2.84E-03	5.05E-02	NA	NA	2.54E-03	1.48E-03	NA
rs115645716	AC092170.1-AC009312.1	3.28E-04	2.35E-03	NA	NA	2.84E-03	1.62E-02	NA	NA	1.42E-02	1.01E-02	NA
rs138518560	AC092170.1-AC009312.1	2.56E-05	1.82E-04	NA	NA	7.81E-03	5.63E-02	NA	NA	1.81E-02	7.20E-03	NA
rs116479873	AC092170.1-AC009312.1	4.22E-04	3.73E-03	NA	NA	2.15E-01	5.21E-01	NA	NA	3.71E-04	6.30E-04	NA
rs150064803	AC092170.1-AC009312.1	2.21E-04	2.72E-03	NA	NA	2.28E-01	5.11E-01	NA	NA	1.22E-03	2.93E-03	NA
rs116622675	AC092170.1-AC009312.1	1.14E-03	4.93E-03	NA	NA	7.75E-02	2.37E-01	NA	NA	4.82E-03	3.95E-03	NA
rs73947458	AC009312.1	1.26E-04	3.07E-03	NA	NA	1.54E-01	2.50E-01	NA	NA	3.42E-02	9.31E-02	NA
rs57275972	snoU13,SCN9A	1.63E-05	1.03E-04	NA	NA	8.24E-02	5.23E-01	NA	NA	2.89E-01	3.91E-01	NA
rs143020225	snoU13,SCN9A	5.85E-07	8.62E-06	NA	NA	4.13E-02	3.51E-01	NA	NA	9.88E-01	9.82E-01	NA
rs112945476	SCN9A	9.81E-06	4.12E-05	NA	NA	6.61E-02	4.79E-01	NA	NA	2.81E-01	4.25E-01	NA
rs111415017	SCN9A	8.29E-06	3.39E-05	NA	NA	7.24E-02	5.06E-01	NA	NA	2.95E-01	4.19E-01	NA
rs113283978	SCN9A	5.66E-06	3.14E-05	NA	NA	8.79E-02	5.15E-01	NA	NA	3.10E-01	4.99E-01	NA

chr2:167235049:D	SCN9A,SCN9A-SCN7A	7.24E-06	3.14E-05	NA	NA	8.15E-02	5.32E-01	NA	NA	3.03E-01	5.19E-01	NA
rs112047299	SCN9A,SCN9A-SCN7A	7.00E-06	3.07E-05	NA	NA	8.22E-02	5.32E-01	NA	NA	3.06E-01	5.25E-01	NA
chr2:167239818:D	SCN9A-SCN7A	7.43E-07	5.79E-06	NA	NA	7.84E-02	5.23E-01	NA	NA	7.12E-01	9.37E-01	NA
rs57862846	SCN9A-SCN7A	7.73E-06	3.47E-05	NA	NA	8.02E-02	5.21E-01	NA	NA	3.23E-01	4.83E-01	NA
rs75884187	SCN9A-SCN7A	8.51E-06	3.95E-05	NA	NA	7.89E-02	5.14E-01	NA	NA	3.13E-01	5.24E-01	NA
rs6432911	SCN9A-SCN7A	8.52E-06	4.02E-05	NA	NA	7.81E-02	5.09E-01	NA	NA	3.15E-01	5.24E-01	NA
rs16856071	SPC25,SPC25,SPC25,SPC25	4.51E-01	6.70E-01	5.20E-03	7.26E-03	5.93E-01	5.38E-01	1.12E-02	4.32E-02	9.17E-01	9.73E-01	1.16E-02
rs77921320	LINC01090	NA	NA	1.72E-02	6.66E-02	NA	NA	8.51E-05	2.77E-03	5.47E-01	4.28E-01	6.05E-01
rs74002562	LINC01107-AC113618.1	6.32E-04	1.49E-02	NA	NA	2.17E-03	3.13E-02	NA	NA	9.97E-02	1.62E-01	NA
rs4684628	SRGAP3,SRGAP3,SRGAP3,SRGAP3	9.83E-02	1.24E-01	9.16E-02	2.00E-01	3.01E-02	1.98E-01	1.71E-02	8.22E-02	4.28E-02	4.30E-01	1.30E-01
rs150728868	EIF3KP2-AC133680.1	NA	NA	NA	NA	1.12E-04	1.06E-05	NA	NA	1.05E-03	1.46E-03	NA
rs80329973	LSAMP	NA	NA	9.53E-01	9.84E-01	4.35E-02	2.77E-02	3.20E-01	6.76E-02	7.75E-06	6.19E-05	6.78E-01
rs811810	DBR1,DBR1-ARMC8	2.35E-04	2.45E-04	1.27E-01	1.38E-01	1.95E-02	3.89E-02	8.30E-01	8.74E-01	1.17E-01	4.37E-02	2.97E-01
rs774804	DBR1,DBR1-ARMC8	2.56E-04	2.32E-04	7.11E-02	7.73E-02	2.48E-02	4.83E-02	9.91E-01	9.45E-01	1.25E-01	3.93E-02	5.27E-01
rs774805	DBR1,DBR1-ARMC8	2.40E-04	2.47E-04	1.05E-01	1.17E-01	1.89E-02	3.63E-02	8.44E-01	8.68E-01	1.20E-01	4.49E-02	3.49E-01
rs2622700	DBR1,DBR1-ARMC8	4.14E-04	4.65E-04	1.26E-01	1.37E-01	1.95E-02	2.90E-02	8.17E-01	8.73E-01	1.01E-01	3.67E-02	3.00E-01
rs143244591	RP11-206M11.7	1.19E-04	9.69E-04	NA	NA	1.93E-02	1.06E-01	NA	NA	1.59E-05	1.92E-04	NA
rs139793347	.ADL2,NAALADL2,NAALADL2,NAAL	1.15E-06	8.74E-08	NA	NA	2.58E-01	5.49E-01	NA	NA	9.61E-01	8.24E-01	NA
rs4912498	EIF2B5-IT1,EIF2B5	5.73E-01	7.79E-01	6.16E-03	8.62E-03	6.33E-01	4.03E-01	2.51E-02	4.22E-03	8.33E-02	1.57E-01	1.49E-03
rs10939037	LGI2-SEPSECS	7.20E-01	6.53E-01	1.90E-04	2.01E-04	1.41E-01	2.52E-01	2.68E-04	1.04E-01	4.98E-01	7.71E-01	3.28E-01
rs10939038	LGI2-SEPSECS	7.66E-01	6.88E-01	3.33E-04	3.86E-04	1.54E-01	2.41E-01	2.10E-04	8.29E-02	5.40E-01	8.08E-01	3.54E-01
rs73252531	SEPSECS,SEPSECS-PI4K2B	1.10E-01	2.11E-01	3.06E-01	9.60E-01	8.39E-02	2.56E-01	7.55E-06	2.97E-03	8.60E-01	9.28E-01	2.75E-01
rs11937742	SEPSECS,PI4K2B	8.66E-01	9.13E-01	4.20E-04	2.78E-03	3.22E-01	4.90E-01	1.27E-03	6.32E-02	4.08E-01	9.70E-01	3.84E-01
chr4:25163774:I	SEPSECS,PI4K2B	6.46E-01	5.38E-01	1.93E-03	4.96E-03	7.26E-01	9.62E-01	2.18E-03	1.61E-01	6.61E-01	8.37E-01	1.85E-01
chr4:25163777:I	SEPSECS,PI4K2B	6.15E-01	4.89E-01	3.94E-03	8.25E-03	7.65E-01	9.74E-01	1.43E-03	1.23E-01	6.95E-01	8.83E-01	1.03E-01
rs73252534	PI4K2B	NA	NA	5.51E-02	3.92E-01	NA	NA	1.57E-06	3.55E-04	7.86E-01	6.19E-01	1.61E-01
rs12498160	PI4K2B	8.45E-01	8.86E-01	4.03E-04	2.72E-03	3.23E-01	5.00E-01	1.23E-03	6.20E-02	3.83E-01	9.97E-01	3.82E-01
rs73252535	PI4K2B	NA	NA	5.60E-02	3.96E-01	NA	NA	1.52E-06	3.41E-04	7.86E-01	6.19E-01	1.61E-01
rs73252537	PI4K2B	NA	NA	5.74E-02	4.01E-01	NA	NA	1.40E-06	3.15E-04	7.87E-01	6.20E-01	1.61E-01
rs73252538	PI4K2B	NA	NA	5.57E-02	4.02E-01	NA	NA	1.27E-06	2.90E-04	7.56E-01	5.98E-01	1.60E-01
rs73252540	PI4K2B	NA	NA	8.57E-02	4.47E-01	NA	NA	1.30E-06	3.23E-04	7.83E-01	9.60E-01	2.04E-01
rs147170184	PI4K2B	2.93E-03	6.66E-02	8.92E-02	4.47E-01	2.18E-01	3.79E-01	3.35E-06	5.60E-04	3.42E-01	1.47E-01	2.65E-01
rs147364487	PI4K2B	5.23E-02	3.19E-01	8.95E-02	4.48E-01	3.87E-01	5.27E-01	3.36E-06	5.60E-04	4.91E-01	2.33E-01	2.66E-01
rs73252544	PI4K2B	NA	NA	9.38E-02	4.82E-01	NA	NA	3.36E-06	5.62E-04	8.61E-01	9.64E-01	1.36E-01
rs141771882	PI4K2B	6.18E-03	1.13E-01	7.82E-02	4.00E-01	2.02E-01	3.46E-01	3.68E-06	4.65E-04	3.07E-01	1.27E-01	2.87E-01
rs115472754	PI4K2B	3.39E-03	7.39E-02	8.98E-02	4.49E-01	2.75E-01	4.31E-01	3.73E-06	6.83E-04	2.78E-01	9.79E-02	2.67E-01
rs115579188	PI4K2B	5.22E-03	8.68E-02	9.67E-02	4.73E-01	2.60E-01	3.62E-01	3.44E-06	5.61E-04	3.08E-01	1.42E-01	2.65E-01
rs73252547	PI4K2B	3.35E-03	7.38E-02	9.67E-02	4.74E-01	2.13E-01	3.72E-01	3.44E-06	5.61E-04	3.39E-01	1.45E-01	2.65E-01
rs55974734	PI4K2B	3.39E-03	7.45E-02	9.73E-02	4.76E-01	2.13E-01	3.71E-01	3.45E-06	5.61E-04	3.39E-01	1.45E-01	2.66E-01
rs73252548	PI4K2B	3.39E-03	7.46E-02	9.75E-02	4.76E-01	2.13E-01	3.71E-01	3.45E-06	5.62E-04	3.39E-01	1.45E-01	2.66E-01
chr4:25198751:D	PI4K2B	3.43E-03	7.52E-02	9.81E-02	4.78E-01	2.13E-01	3.71E-01	3.46E-06	5.61E-04	3.38E-01	1.45E-01	2.66E-01
rs73252549	PI4K2B	NA	NA	1.00E-01	5.04E-01	NA	NA	3.42E-06	5.62E-04	8.60E-01	9.65E-01	1.37E-01
rs73252550	PI4K2B	NA	NA	1.00E-01	5.05E-01	NA	NA	3.43E-06	5.62E-04	8.60E-01	9.65E-01	1.36E-01
rs73252551	PI4K2B	NA	NA	1.01E-01	5.09E-01	NA	NA	3.44E-06	5.62E-04	8.58E-01	9.64E-01	1.37E-01
rs73252553	PI4K2B	3.49E-03	7.74E-02	1.01E-01	4.89E-01	1.72E-01	3.50E-01	3.50E-06	5.62E-04	3.38E-01	1.44E-01	2.65E-01
chr4:25202768:I	PI4K2B	3.54E-03	7.91E-02	1.03E-01	4.94E-01	1.70E-01	3.45E-01	3.53E-06	5.62E-04	3.38E-01	1.44E-01	2.65E-01

rs73252554	PI4K2B	3.59E-03	8.16E-02	1.06E-01	5.02E-01	1.66E-01	3.39E-01	3.59E-06	5.62E-04	3.36E-01	1.42E-01	2.65E-01
rs73252555	PI4K2B	5.90E-03	1.13E-01	1.15E-01	5.22E-01	1.59E-01	3.52E-01	4.23E-06	6.76E-04	3.90E-01	1.75E-01	2.97E-01
rs73252556	PI4K2B	NA	NA	1.18E-01	5.49E-01	NA	NA	4.19E-06	6.79E-04	8.43E-01	9.56E-01	1.56E-01
rs55638051	PI4K2B	5.89E-03	1.14E-01	1.15E-01	5.23E-01	1.58E-01	3.52E-01	4.24E-06	6.76E-04	3.90E-01	1.76E-01	2.97E-01
rs73252557	PI4K2B	5.93E-03	1.14E-01	1.15E-01	5.24E-01	1.58E-01	3.51E-01	4.24E-06	6.77E-04	3.90E-01	1.76E-01	2.97E-01
rs424573	PI4K2B	5.75E-03	1.15E-01	1.24E-01	5.45E-01	1.56E-01	3.48E-01	4.49E-06	6.87E-04	3.98E-01	1.79E-01	2.95E-01
rs409131	PI4K2B	5.74E-03	1.15E-01	1.25E-01	5.47E-01	1.55E-01	3.48E-01	4.52E-06	6.89E-04	3.98E-01	1.79E-01	2.95E-01
rs313574	PI4K2B	5.68E-03	1.17E-01	1.33E-01	5.65E-01	1.54E-01	3.46E-01	4.76E-06	6.99E-04	4.04E-01	1.82E-01	2.94E-01
rs313573	PI4K2B	4.97E-02	2.53E-01	2.49E-01	6.32E-01	3.38E-02	1.03E-01	5.45E-05	2.41E-03	7.07E-01	2.24E-01	2.99E-01
rs313570	RP11-660M5.1,PI4K2B	5.50E-03	1.16E-01	1.35E-01	5.71E-01	1.56E-01	3.48E-01	4.67E-06	6.96E-04	4.01E-01	1.81E-01	2.94E-01
rs313569	RP11-660M5.1,PI4K2B	4.00E-02	3.76E-01	1.32E-01	5.44E-01	3.57E-02	2.09E-01	4.09E-06	5.60E-04	6.06E-01	2.88E-01	3.16E-01
rs313579	RP11-660M5.1,PI4K2B	5.65E-03	1.14E-01	1.33E-01	5.59E-01	1.38E-01	3.28E-01	4.81E-06	6.91E-04	4.94E-01	2.45E-01	2.92E-01
rs313578	PI4K2B,RP11-660M5.1	4.90E-02	2.72E-01	2.35E-01	6.38E-01	1.57E-03	4.56E-03	5.38E-05	2.36E-03	7.35E-01	5.53E-01	3.58E-01
rs313576	RP11-660M5.1,PI4K2B	4.45E-02	2.54E-01	2.35E-01	6.39E-01	1.25E-03	2.56E-03	5.35E-05	2.33E-03	7.36E-01	5.58E-01	3.60E-01
rs313575	RP11-660M5.1,PI4K2B	NA	NA	1.45E-01	6.14E-01	NA	NA	4.84E-06	6.90E-04	8.34E-01	9.59E-01	1.54E-01
rs3115231	PI4K2B	7.88E-02	1.78E-01	5.91E-02	3.17E-01	2.73E-02	1.28E-01	9.22E-06	9.74E-04	6.93E-01	8.87E-01	1.72E-01
rs188759	PI4K2B	2.89E-03	7.43E-02	1.37E-01	5.71E-01	1.50E-01	3.35E-01	5.17E-06	7.10E-04	4.19E-01	2.26E-01	2.95E-01
rs313547	PI4K2B	1.95E-03	1.38E-02	2.31E-01	7.33E-01	4.92E-03	2.23E-02	4.67E-05	2.31E-03	7.77E-01	9.36E-01	3.39E-01
rs313544	PI4K2B	3.99E-03	2.96E-02	1.31E-01	5.49E-01	1.31E-02	4.31E-02	1.09E-05	1.10E-03	7.58E-01	8.40E-01	3.56E-01
rs313553	PI4K2B	4.15E-03	3.21E-02	1.34E-01	5.57E-01	1.47E-02	4.55E-02	1.01E-05	1.08E-03	7.67E-01	8.63E-01	3.59E-01
rs183170687	PI4K2B	NA	NA	1.54E-01	6.30E-01	NA	NA	6.80E-06	9.03E-04	8.29E-01	9.55E-01	1.52E-01
rs313560	PI4K2B	5.10E-03	4.07E-02	1.87E-01	6.57E-01	2.40E-01	3.86E-01	6.06E-06	8.01E-04	7.05E-01	8.73E-01	3.25E-01
rs313566	PI4K2B	3.01E-01	3.89E-01	1.19E-01	5.09E-01	4.02E-01	7.50E-01	1.63E-05	1.78E-03	5.49E-01	7.99E-01	7.50E-02
rs313536	PI4K2B	4.34E-03	1.09E-01	1.81E-01	7.05E-01	1.92E-01	3.57E-01	3.65E-06	5.41E-04	2.11E-01	1.48E-01	3.22E-01
rs313542	PI4K2B	NA	NA	8.76E-01	4.92E-01	NA	NA	7.12E-10	1.73E-05	7.78E-01	7.45E-01	7.25E-03
rs313540	PI4K2B	NA	NA	2.12E-01	7.76E-01	NA	NA	2.92E-06	4.85E-04	9.13E-01	8.67E-01	1.67E-01
rs313539	PI4K2B	5.45E-03	1.21E-01	1.90E-01	7.22E-01	1.95E-01	3.61E-01	2.92E-06	4.85E-04	2.25E-01	1.58E-01	3.16E-01
rs313538	PI4K2B	5.56E-03	1.22E-01	1.91E-01	7.24E-01	1.95E-01	3.61E-01	2.92E-06	4.85E-04	2.26E-01	1.59E-01	3.16E-01
rs3115232	PI4K2B	1.10E-02	1.88E-01	2.20E-01	7.63E-01	1.98E-01	3.65E-01	2.85E-06	4.83E-04	2.33E-01	1.63E-01	3.14E-01
rs180854188	PI4K2B	3.99E-01	8.47E-01	1.55E-01	6.40E-01	3.98E-02	1.88E-01	1.43E-05	2.62E-03	6.85E-01	6.66E-01	1.80E-01
rs313533	PI4K2B	6.49E-04	1.30E-01	2.20E-01	7.63E-01	1.98E-01	3.65E-01	2.53E-06	4.93E-04	2.36E-01	1.66E-01	3.14E-01
rs12511593	PI4K2B,PI4K2B-ZCCHC4	8.87E-04	7.85E-03	9.05E-01	4.34E-01	2.25E-02	1.02E-01	6.25E-06	2.77E-03	9.11E-03	6.87E-03	3.25E-01
rs7689780	PI4K2B,PI4K2B-ZCCHC4	1.08E-03	9.48E-03	6.27E-01	6.94E-01	3.30E-02	1.20E-01	4.63E-07	1.26E-04	5.71E-02	2.63E-02	5.27E-01
rs10433834	PI4K2B,PI4K2B-ZCCHC4	NA	NA	2.63E-01	8.39E-01	NA	NA	2.54E-06	5.00E-04	9.33E-01	8.80E-01	1.67E-01
rs1818426	PI4K2B-ZCCHC4	NA	NA	2.62E-01	8.41E-01	NA	NA	2.48E-06	5.05E-04	9.30E-01	8.75E-01	1.67E-01
rs9884670	PI4K2B-ZCCHC4	NA	NA	2.63E-01	8.40E-01	NA	NA	2.54E-06	5.03E-04	9.28E-01	8.74E-01	1.66E-01
chr4:25289189:i	PI4K2B-ZCCHC4	NA	NA	2.45E-01	8.25E-01	1.83E-01	5.17E-01	4.39E-06	1.79E-03	4.64E-01	4.41E-01	1.29E-01
rs4697558	PI4K2B-ZCCHC4	NA	NA	2.48E-01	8.20E-01	NA	NA	2.56E-06	5.12E-04	9.41E-01	8.86E-01	1.76E-01
rs316804	ZCCHC4,PI4K2B-ZCCHC4	3.69E-01	3.04E-01	6.58E-02	3.83E-01	1.27E-01	1.84E-01	8.54E-06	2.58E-03	3.79E-01	2.35E-01	2.69E-01
rs316776	AC108218.1,ZCCHC4	5.09E-02	1.48E-01	8.75E-03	8.99E-02	4.17E-01	6.72E-01	1.41E-03	2.92E-02	3.39E-02	4.97E-02	8.20E-01
rs316777	AC108218.1,ZCCHC4	5.07E-02	1.48E-01	8.75E-03	8.99E-02	4.17E-01	6.72E-01	1.28E-03	2.60E-02	3.39E-02	4.97E-02	8.22E-01
rs315684	ANAPC4,ZCCHC4,ZCCHC4-ANAPC4	5.01E-02	1.44E-01	7.31E-03	7.96E-02	4.28E-01	6.66E-01	1.05E-03	2.10E-02	2.86E-02	4.48E-02	9.70E-01
rs315682	ANAPC4,ZCCHC4-ANAPC4	8.99E-02	2.00E-01	1.01E-02	1.00E-01	4.39E-01	7.50E-01	1.16E-03	2.52E-02	2.23E-02	3.50E-02	9.72E-01
rs4697570	ANAPC4-RP11-206P5.1	5.80E-01	7.97E-01	2.29E-03	2.06E-02	4.84E-01	3.45E-01	2.66E-04	1.66E-02	6.97E-01	8.71E-01	5.32E-01
rs6824813	RP11-8L2.1	7.07E-06	4.29E-05	6.73E-01	7.86E-01	9.01E-02	6.01E-02	4.72E-01	7.39E-01	8.25E-02	1.43E-01	NA
rs10000269	SEC24D	2.47E-05	6.65E-04	NA	NA	3.62E-01	4.61E-01	NA	NA	1.68E-02	1.66E-02	NA

rs28651948	SEC24D	5.10E-06	2.29E-04	NA	NA	3.64E-01	4.62E-01	NA	NA	1.68E-02	1.66E-02	NA
rs139968109	SEC24D	4.04E-06	1.97E-04	NA	NA	3.70E-01	4.70E-01	NA	NA	1.66E-02	1.64E-02	NA
rs28595532	SEC24D	9.96E-06	3.30E-04	3.13E-01	1.60E-01	6.08E-02	1.68E-01	4.57E-01	6.04E-01	4.67E-02	6.55E-02	3.07E-01
rs11098451	SEC24D	3.82E-05	7.20E-04	2.46E-01	1.01E-01	2.85E-01	5.79E-01	4.52E-01	5.98E-01	1.42E-03	1.11E-02	2.42E-01
chr4:124629474:D	LINC01091	2.56E-05	8.86E-05	NA	NA	NA	NA	NA	NA	2.54E-02	2.26E-02	NA
rs4572830	-294O2.2,RP11-294O2.2-RP11-366	3.92E-02	6.02E-02	1.32E-01	1.38E-01	1.49E-02	3.93E-03	9.32E-02	6.00E-02	2.15E-01	1.44E-01	9.54E-03
rs13140317	-294O2.2,RP11-294O2.2-RP11-366	3.51E-03	3.81E-03	1.06E-01	1.41E-01	4.56E-02	1.41E-02	1.45E-01	8.01E-02	2.08E-01	7.90E-02	8.10E-03
rs12508887	-294O2.2,RP11-294O2.2-RP11-366	3.05E-03	1.96E-03	1.07E-01	1.55E-01	1.87E-02	8.35E-03	1.32E-01	6.92E-02	1.30E-01	6.16E-02	6.77E-03
rs13125630	RP11-294O2.2-RP11-366M4.3	7.28E-03	9.92E-03	1.87E-01	1.95E-01	2.31E-02	6.21E-03	1.08E-01	1.09E-01	1.42E-01	9.59E-02	1.19E-02
rs79623836	CTNND2	2.54E-02	3.90E-02	NA	NA	1.01E-02	1.15E-02	NA	NA	4.62E-05	3.98E-04	NA
rs116226119	CTNND2	2.53E-02	3.73E-02	NA	NA	1.23E-02	1.32E-02	NA	NA	8.70E-05	6.28E-04	NA
rs114311699	CTNND2	2.73E-02	1.50E-02	NA	NA	6.14E-03	9.82E-03	NA	NA	5.59E-05	1.60E-03	NA
rs62352163	CDH18	2.65E-02	2.65E-02	1.33E-02	4.34E-02	3.34E-02	4.18E-02	1.01E-02	4.01E-02	5.23E-01	8.28E-01	4.34E-01
rs4704367	RN7SL208P-S100Z	1.35E-03	1.80E-03	2.06E-01	2.55E-01	5.03E-04	3.99E-02	3.83E-01	7.15E-01	3.45E-01	6.33E-01	4.37E-02
rs74704845	PRR16-RNU4-69P	1.67E-06	1.94E-04	NA	NA	NA	NA	NA	NA	5.46E-01	6.13E-01	NA
rs2033454	AC008703.2-AC008691.1	1.59E-06	1.33E-04	NA	NA	2.67E-01	4.59E-01	NA	NA	7.24E-02	3.46E-02	NA
rs73323306	ARL2BPP5-RP11-541P9.3	2.42E-01	2.70E-01	NA	NA	7.61E-09	6.60E-06	NA	NA	7.39E-01	3.91E-01	NA
rs2878892	NM2,TENM2,TENM2,TENM2,TENM2	1.56E-02	3.93E-03	3.36E-02	7.80E-02	6.65E-02	6.82E-02	1.24E-02	8.97E-03	5.69E-01	4.60E-01	3.84E-02
rs10066744	\1,COL23A1,COL23A1,COL23A1,COL23A1	8.05E-05	3.86E-04	NA	NA	4.41E-03	1.45E-01	NA	NA	9.46E-01	9.26E-01	NA
rs116319917	GMD5	3.69E-05	7.71E-06	NA	NA	3.36E-02	7.23E-02	NA	NA	1.17E-02	1.18E-01	NA
rs1202310	ID4-RP1-130G2.1	6.55E-01	3.71E-01	5.09E-05	2.38E-04	7.97E-01	5.91E-01	6.09E-03	1.28E-01	2.96E-01	3.47E-01	6.64E-01
chr6:19952232:D	ID4-RP1-130G2.1	6.06E-02	5.74E-02	1.03E-04	7.75E-04	6.55E-01	4.43E-01	1.08E-02	7.31E-02	8.46E-01	6.17E-01	4.02E-01
rs12190760	ID4-RP1-130G2.1	8.35E-03	1.36E-02	3.11E-05	2.74E-04	4.28E-01	9.29E-01	1.13E-02	1.22E-01	7.75E-01	5.21E-01	5.17E-01
rs12193640	ID4-RP1-130G2.1	2.02E-02	5.62E-02	7.64E-05	5.56E-04	6.78E-01	8.40E-01	1.14E-02	1.04E-01	6.92E-01	4.63E-01	5.46E-01
rs114982299	LTB,LST1,LTB-LST1	NA	NA	1.65E-02	1.37E-02	NA	NA	1.39E-05	6.22E-05	4.07E-01	2.80E-01	8.17E-01
rs72906044	FTH1P5-RP3-437C15.2	8.12E-02	9.86E-02	1.37E-02	4.33E-03	8.44E-01	7.98E-01	1.72E-04	1.74E-03	3.80E-01	2.87E-01	2.04E-02
chr6:51199846:D	FTH1P5-RP3-437C15.2	6.71E-02	8.27E-02	1.56E-02	4.37E-03	9.65E-01	7.41E-01	3.53E-05	1.09E-04	3.55E-01	2.59E-01	4.98E-02
rs17665889	FTH1P5-RP3-437C15.2	4.69E-02	5.92E-02	1.25E-02	2.77E-03	8.30E-01	8.08E-01	4.87E-05	4.71E-04	3.49E-01	2.86E-01	1.45E-02
rs16881418	FTH1P5-RP3-437C15.2	6.42E-02	9.28E-02	7.63E-03	1.61E-03	8.14E-01	7.82E-01	3.23E-04	1.81E-03	3.92E-01	3.02E-01	2.28E-02
rs7738302	FTH1P5-RP3-437C15.2	5.61E-02	7.38E-02	8.28E-03	2.52E-03	9.02E-01	7.65E-01	1.11E-04	9.47E-04	3.87E-01	2.87E-01	1.70E-02
rs12529854	FTH1P5-RP3-437C15.2	5.68E-02	7.52E-02	8.40E-03	2.52E-03	9.08E-01	7.61E-01	1.17E-04	9.77E-04	3.90E-01	2.92E-01	1.87E-02
rs1327284	P3-437C15.2,FTH1P5-RP3-437C15.2	7.27E-02	9.28E-02	1.03E-02	2.92E-03	9.80E-01	6.77E-01	9.80E-05	1.03E-03	3.56E-01	2.84E-01	1.94E-02
rs10498783	437C15.2,RP3-437C15.2-RP3-437C15.2	7.64E-02	9.75E-02	1.01E-02	2.88E-03	9.86E-01	6.73E-01	9.75E-05	1.01E-03	3.78E-01	3.03E-01	1.91E-02
rs1327280	437C15.2,RP3-437C15.2-RP3-437C15.2	9.08E-02	1.17E-01	6.75E-03	1.75E-03	9.03E-01	7.73E-01	2.06E-04	2.46E-03	4.01E-01	3.23E-01	1.84E-02
chr6:51255307:D	437C15.2,RP3-437C15.2-RP3-437C15.2	8.60E-02	1.09E-01	1.00E-02	2.78E-03	9.74E-01	6.79E-01	9.85E-05	1.03E-03	4.22E-01	3.41E-01	1.84E-02
rs12527522	437C15.1,RP3-437C15.2-RP3-437C15.2	NA	NA	1.26E-02	3.03E-03	NA	NA	3.91E-04	2.30E-03	9.94E-01	6.38E-01	3.38E-02
rs6940087	437C15.1,RP3-437C15.2-RP3-437C15.2	1.01E-01	8.79E-02	4.61E-02	1.03E-02	7.99E-01	7.79E-01	5.27E-04	2.13E-03	5.32E-01	5.63E-01	2.84E-02
rs72906075	3-437C15.1,RP3-437C15.1-SNORD66	2.44E-01	2.59E-01	3.68E-02	7.27E-03	8.58E-01	8.09E-01	5.33E-04	2.16E-03	3.90E-01	4.30E-01	2.59E-02
rs1857188	3-437C15.1,RP3-437C15.1-SNORD66	1.56E-01	1.29E-01	4.82E-02	9.59E-03	5.78E-01	9.55E-01	4.75E-05	4.32E-04	4.62E-01	5.05E-01	3.82E-02
rs111885630	RP3-437C15.1-SNORD66	8.09E-02	7.39E-02	4.57E-02	9.89E-03	7.59E-01	8.53E-01	5.70E-04	2.22E-03	5.90E-01	6.26E-01	2.71E-02
rs12524614	RP3-437C15.1-SNORD66	9.37E-02	8.06E-02	4.57E-02	9.88E-03	7.99E-01	7.81E-01	5.82E-04	2.24E-03	4.98E-01	5.51E-01	2.68E-02
rs16881457	RP3-437C15.1-SNORD66	3.05E-01	2.38E-01	2.88E-02	5.34E-03	8.57E-01	4.89E-01	5.42E-04	2.26E-03	9.36E-01	8.23E-01	3.98E-02
rs16881462	RP3-437C15.1-SNORD66	3.44E-01	2.80E-01	3.57E-02	9.09E-03	7.67E-01	3.98E-01	3.12E-04	1.68E-03	9.78E-01	7.81E-01	3.94E-02
rs72900275	RP3-437C15.1-SNORD66	3.57E-01	5.34E-01	1.13E-02	2.27E-03	8.42E-01	7.16E-01	5.67E-04	1.96E-03	1.83E-01	1.66E-01	9.06E-02
rs72900278	RP3-437C15.1-SNORD66	3.48E-01	5.19E-01	1.19E-02	2.48E-03	8.03E-01	4.95E-01	8.23E-04	2.25E-03	2.02E-01	2.18E-01	7.15E-02
rs16881539	SNORD66-RP11-793K1.1	8.43E-01	8.48E-01	6.34E-03	1.24E-03	8.86E-01	7.47E-01	1.31E-03	5.38E-03	1.12E-01	9.87E-02	1.09E-01

rs17814136	SNORD66-RP11-793K1.1	5.13E-01	7.36E-01	6.09E-03	1.19E-03	8.61E-01	8.12E-01	1.20E-03	5.19E-03	2.10E-01	1.55E-01	1.09E-01
rs60207381	SNORD66-RP11-793K1.1	5.32E-01	7.44E-01	8.03E-03	1.73E-03	8.41E-01	8.29E-01	1.17E-03	5.12E-03	2.21E-01	1.62E-01	9.96E-02
rs74536655	SNORD66-RP11-793K1.1	7.56E-01	9.97E-01	5.93E-03	1.10E-03	7.97E-01	8.21E-01	1.16E-03	5.16E-03	1.28E-01	1.10E-01	8.87E-02
rs72902183	SNORD66-RP11-793K1.1	4.86E-01	7.02E-01	7.30E-03	1.45E-03	7.76E-01	8.74E-01	1.15E-03	5.16E-03	2.55E-01	2.18E-01	9.48E-02
rs12528509	SNORD66-RP11-793K1.1	7.54E-01	1.00E+00	5.79E-03	1.07E-03	7.98E-01	8.20E-01	1.19E-03	5.28E-03	1.24E-01	1.05E-01	8.82E-02
rs12528978	SNORD66-RP11-793K1.1	4.84E-01	6.98E-01	7.26E-03	1.45E-03	7.75E-01	8.75E-01	1.15E-03	5.17E-03	2.54E-01	2.19E-01	9.49E-02
rs13209289	DST	NA	NA	3.03E-04	1.23E-04	NA	NA	1.22E-03	6.70E-03	NA	NA	1.72E-01
rs11751461	OSTCP6,BEND6	NA	NA	7.01E-04	4.16E-04	NA	NA	2.23E-03	1.11E-02	NA	NA	1.39E-01
rs189276636	AGMO,AGMO,AGMO	1.71E-04	1.83E-04	NA	NA	2.27E-01	5.48E-01	NA	NA	1.35E-03	1.71E-03	NA
rs10267821	RN7SL292P-RP11-153N17.1	1.76E-03	5.13E-03	NA	NA	8.20E-01	5.69E-01	NA	NA	5.72E-06	6.07E-05	NA
rs28507362	RN7SL292P-RP11-153N17.1	1.29E-03	3.88E-03	NA	NA	9.02E-01	6.70E-01	NA	NA	4.92E-06	6.77E-05	NA
rs6967571	RN7SL292P-RP11-153N17.1	4.83E-04	1.47E-03	NA	NA	6.62E-01	4.27E-01	NA	NA	3.34E-06	8.72E-05	NA
chr7:75707519:D	O05077.14,AC005077.14-RNU6-86	3.13E-02	1.98E-02	3.90E-02	3.64E-02	3.90E-01	1.65E-01	8.96E-04	6.99E-04	1.01E-01	2.76E-01	2.14E-01
rs2732768	SEMA3D-AC073958.2	6.45E-01	9.59E-01	2.22E-01	3.80E-01	4.21E-01	7.78E-01	2.04E-05	1.61E-04	3.42E-01	5.90E-01	1.80E-02
rs12534830	SEMA3D-AC073958.2	4.67E-02	3.59E-02	2.91E-01	3.37E-01	6.75E-02	4.65E-01	3.36E-06	5.51E-05	4.40E-01	4.82E-01	7.65E-02
rs4143206	SEMA3D-AC073958.2	9.74E-01	7.75E-01	2.01E-01	3.51E-01	7.19E-01	4.67E-01	2.00E-05	1.21E-04	2.79E-02	3.06E-02	2.28E-02
rs2732766	SEMA3D-AC073958.2	8.36E-01	5.52E-01	1.27E-01	2.33E-01	1.55E-01	3.83E-01	2.71E-05	2.12E-04	8.58E-01	8.59E-01	1.75E-02
rs1405974	SEMA3D-AC073958.2	8.39E-01	5.55E-01	1.26E-01	2.36E-01	1.56E-01	3.81E-01	2.46E-05	2.07E-04	8.78E-01	8.37E-01	1.72E-02
rs1346686	SEMA3D-AC073958.2	9.75E-01	7.76E-01	2.19E-01	3.92E-01	7.21E-01	4.68E-01	1.87E-05	1.69E-04	2.78E-02	3.03E-02	2.57E-02
rs2732765	SEMA3D-AC073958.2	8.41E-01	5.55E-01	1.25E-01	2.34E-01	1.67E-01	4.00E-01	2.50E-05	2.05E-04	8.83E-01	8.33E-01	1.49E-02
rs2732764	SEMA3D-AC073958.2	8.38E-01	5.55E-01	1.27E-01	2.36E-01	1.57E-01	3.82E-01	2.45E-05	2.06E-04	8.78E-01	8.37E-01	1.72E-02
rs2564777	SEMA3D-AC073958.2	8.75E-01	5.94E-01	1.25E-01	2.44E-01	1.74E-01	4.15E-01	2.57E-05	2.05E-04	8.76E-01	8.38E-01	1.78E-02
rs2564778	SEMA3D-AC073958.2	8.38E-01	5.54E-01	1.27E-01	2.37E-01	1.56E-01	3.80E-01	2.45E-05	2.06E-04	8.78E-01	8.36E-01	1.72E-02
rs7385520	SEMA3D-AC073958.2	5.14E-01	2.81E-01	2.29E-01	3.30E-01	1.74E-01	5.69E-01	9.75E-06	2.07E-05	8.42E-01	7.84E-01	1.57E-02
rs7385554	SEMA3D-AC073958.2	3.19E-01	2.06E-01	1.64E-01	2.34E-01	8.46E-02	3.45E-01	7.81E-06	3.61E-05	7.91E-01	9.07E-01	2.56E-02
rs4333515	SEMA3D-AC073958.2	9.89E-01	8.91E-01	1.02E-01	1.98E-01	2.17E-01	4.96E-01	2.28E-05	1.23E-04	9.97E-01	7.34E-01	1.84E-02
rs4275151	SEMA3D-AC073958.2	7.86E-01	5.00E-01	7.99E-02	1.43E-01	3.12E-01	8.90E-01	5.13E-05	1.69E-04	8.99E-01	7.99E-01	2.57E-02
rs4560724	SEMA3D-AC073958.2	8.71E-01	8.19E-01	2.28E-01	3.43E-01	7.21E-01	4.49E-01	1.36E-05	1.61E-04	4.36E-02	4.97E-02	3.14E-02
rs2564780	SEMA3D-AC073958.2	3.36E-01	1.96E-01	1.33E-01	2.44E-01	7.46E-02	1.73E-01	5.64E-05	4.65E-04	8.34E-01	8.82E-01	2.86E-02
rs2696173	SEMA3D-AC073958.2	8.32E-01	5.51E-01	1.13E-01	2.18E-01	1.54E-01	3.63E-01	2.45E-05	2.06E-04	8.81E-01	8.34E-01	1.72E-02
rs2696174	SEMA3D-AC073958.2	8.23E-01	5.45E-01	1.13E-01	2.19E-01	1.52E-01	3.55E-01	2.45E-05	2.06E-04	8.22E-01	8.53E-01	1.69E-02
rs1540847	SEMA3D-AC073958.2	9.91E-01	7.65E-01	1.93E-01	3.59E-01	6.90E-01	4.52E-01	1.86E-05	1.70E-04	3.32E-02	3.29E-02	2.59E-02
rs1835285	SEMA3D-AC073958.2	8.10E-01	5.37E-01	1.15E-01	2.24E-01	1.65E-01	3.87E-01	2.56E-05	2.08E-04	8.52E-01	8.39E-01	1.66E-02
rs7455090	SEMA3D-AC073958.2	8.44E-01	6.86E-01	1.78E-01	3.44E-01	5.94E-01	3.29E-01	1.64E-05	1.53E-04	5.63E-02	5.67E-02	2.87E-02
rs10265865	SEMA3D-AC073958.2	9.65E-01	7.82E-01	1.81E-01	3.44E-01	7.48E-01	5.04E-01	9.96E-06	1.03E-04	3.52E-02	3.54E-02	2.65E-02
rs1429748	SEMA3D-AC073958.2	9.92E-01	7.66E-01	2.02E-01	3.73E-01	7.48E-01	5.00E-01	1.69E-05	1.61E-04	3.61E-02	3.52E-02	2.73E-02
rs7788690	SEMA3D-AC073958.2	9.33E-01	8.64E-01	2.03E-01	3.06E-01	8.50E-01	4.77E-01	1.93E-05	1.84E-03	4.20E-02	4.22E-02	3.13E-02
rs2033294	SEMA3D-AC073958.2	9.13E-01	8.68E-01	1.86E-01	3.35E-01	1.35E-01	2.36E-01	1.91E-05	1.82E-04	5.99E-01	8.05E-01	1.68E-02
rs2033295	SEMA3D-AC073958.2	8.32E-01	9.78E-01	1.37E-01	2.06E-01	3.49E-01	5.55E-01	2.47E-05	2.34E-03	9.87E-01	7.12E-01	1.89E-02
rs2888404	SEMA3D-AC073958.2	7.98E-01	9.80E-01	1.43E-01	2.78E-01	2.10E-01	3.46E-01	2.07E-05	2.11E-04	9.45E-01	7.97E-01	1.65E-02
rs7805482	SEMA3D-AC073958.2	6.80E-01	9.08E-01	1.51E-01	2.24E-01	4.38E-01	6.83E-01	2.43E-05	2.34E-03	6.45E-01	4.37E-01	1.83E-02
rs6950763	SEMA3D-AC073958.2	8.66E-01	9.15E-01	1.34E-01	2.64E-01	2.29E-01	3.70E-01	1.29E-05	1.49E-04	8.87E-01	6.60E-01	1.59E-02
rs12536813	SEMA3D-AC073958.2	2.00E-01	5.64E-02	4.60E-01	5.96E-01	1.22E-01	2.12E-01	2.56E-06	9.53E-05	3.33E-02	6.01E-02	1.02E-01
rs10270393	SEMA3D-AC073958.2	5.99E-01	9.32E-01	1.80E-01	2.67E-01	4.96E-01	7.17E-01	1.95E-05	1.94E-03	8.27E-01	5.64E-01	1.93E-02
rs6964515	SEMA3D-AC073958.2	6.91E-01	9.64E-01	1.78E-01	2.64E-01	6.58E-01	9.51E-01	3.25E-05	2.24E-03	7.70E-01	5.95E-01	1.50E-02
rs78596049	RP11-682N22.1,SHFM1	NA	NA	NA	NA	2.77E-02	2.21E-02	NA	NA	1.87E-05	1.16E-04	NA

rs77837076	CTTNBP2	NA	NA	9.51E-01	8.54E-01	NA	NA	1.42E-03	5.62E-02	NA	NA	2.61E-06
rs34937939	C007568.1,AC007568.1-AC003084	1.40E-01	8.25E-01	9.54E-01	8.06E-01	6.01E-01	6.16E-01	7.58E-04	2.99E-02	7.16E-02	5.31E-01	4.34E-06
rs34065982	AC007568.1-AC003084.2	5.40E-01	7.63E-01	9.96E-01	8.69E-01	NA	NA	4.03E-04	2.53E-02	8.17E-02	2.53E-01	2.66E-05
chr7:127381495:1	SND1	1.28E-01	8.76E-02	8.11E-02	5.47E-02	1.95E-01	4.33E-01	3.48E-02	2.65E-01	1.32E-10	4.65E-07	1.31E-01
rs79925690	RP4-669B10.3,OR2F1,RP4-669B10.	3.98E-03	1.96E-02	9.57E-03	6.32E-03	6.24E-03	1.48E-03	2.08E-01	5.67E-01	NA	NA	6.45E-01
rs7832545	CSMD1	5.97E-01	8.31E-01	6.02E-01	8.75E-01	NA	NA	3.61E-10	3.02E-07	5.64E-04	6.25E-03	6.83E-03
rs77378271	CSMD1	4.17E-01	2.82E-01	7.85E-01	9.58E-01	4.86E-01	8.27E-01	5.30E-10	6.69E-07	4.46E-04	2.38E-03	5.07E-03
rs75721860	CSMD1	3.82E-01	2.56E-01	8.26E-01	9.67E-01	NA	NA	2.75E-09	1.69E-06	2.57E-04	2.07E-03	5.49E-03
rs7836257	RP11-149P24.1-RP11-431D12.1	NA	NA	NA	NA	9.89E-02	5.41E-02	NA	NA	2.04E-08	1.52E-03	NA
rs902820	RP11-953B20.2-RP11-953B20.1	4.30E-03	6.11E-03	4.75E-04	2.16E-03	1.34E-01	4.37E-01	3.75E-02	5.22E-02	8.83E-01	7.74E-01	6.41E-01
rs192069564	C9orf92	1.22E-01	1.12E-01	9.76E-06	1.25E-04	7.52E-01	8.14E-01	3.72E-02	1.45E-01	2.08E-01	2.48E-01	8.85E-01
rs77322165	RP11-373A6.1-RP11-48L13.1	NA	NA	1.38E-02	1.30E-02	NA	NA	6.76E-04	NA	1.04E-01	1.12E-01	2.41E-02
rs10969090	RP11-373A6.1-RP11-48L13.1	NA	NA	1.39E-02	1.29E-02	NA	NA	6.34E-04	NA	1.02E-01	1.09E-01	2.41E-02
rs78011063	RP11-373A6.1-RP11-48L13.1	NA	NA	1.44E-02	1.30E-02	NA	NA	5.50E-04	NA	9.68E-02	1.00E-01	2.41E-02
rs75849759	RP11-373A6.1-RP11-48L13.1	NA	NA	1.51E-02	1.24E-02	NA	NA	4.09E-05	NA	7.48E-02	7.61E-02	3.59E-02
rs10969106	RP11-373A6.1-RP11-48L13.1	NA	NA	2.15E-02	1.64E-02	NA	NA	2.24E-05	9.96E-03	NA	NA	2.85E-02
rs80128289	RP11-373A6.1-RP11-48L13.1	NA	NA	1.85E-02	1.54E-02	NA	NA	3.98E-05	1.40E-02	7.32E-02	7.61E-02	3.69E-02
rs8181059	RP11-373A6.1-RP11-48L13.1	NA	NA	3.37E-02	2.72E-02	NA	NA	2.19E-05	1.22E-02	6.78E-02	7.54E-02	4.25E-02
rs118089179	RP11-373A6.1-RP11-48L13.1	NA	NA	2.63E-01	2.57E-01	5.67E-02	1.05E-01	8.01E-06	1.25E-02	8.53E-01	7.51E-01	4.79E-01
rs10869996	GNAQ,GNAQ,GNAQ	4.99E-03	1.75E-03	2.25E-01	1.61E-01	1.44E-02	3.10E-02	7.93E-01	7.97E-01	4.77E-03	2.05E-02	1.65E-01
rs10781482	GNAQ-RP11-336N8.1	5.54E-04	4.66E-04	4.80E-01	3.36E-01	2.58E-02	2.96E-02	9.76E-01	9.55E-01	6.36E-02	2.20E-01	1.65E-01
rs10781489	GNAQ-RP11-336N8.1	5.40E-04	4.63E-04	4.80E-01	3.37E-01	2.59E-02	2.96E-02	9.67E-01	9.47E-01	6.30E-02	2.19E-01	1.64E-01
rs7853028	PSMB7	4.12E-01	7.08E-01	NA	NA	8.94E-09	8.86E-06	NA	NA	7.50E-01	6.99E-01	NA
rs7081023	RP11-554I8.1-RP11-554I8.2	2.31E-01	3.25E-01	2.68E-04	6.29E-03	4.02E-01	9.44E-01	9.35E-02	1.29E-01	5.98E-01	3.05E-01	6.55E-03
rs2399788	NUDT5,CDC123	1.70E-03	3.67E-04	1.46E-01	2.73E-01	2.99E-01	3.34E-01	2.10E-03	3.90E-02	3.93E-01	8.07E-01	3.19E-01
rs115881020	GLUDP5-RP11-472N13.3	3.32E-03	1.98E-03	NA	NA	1.14E-04	3.54E-04	NA	NA	2.65E-02	3.08E-01	NA
rs114400896	GLUDP5-RP11-472N13.3	3.34E-03	2.29E-03	NA	NA	1.15E-04	3.59E-04	NA	NA	2.63E-02	3.10E-01	NA
rs115553536	L1-472N13.3,GLUDP5-RP11-472N13.3	8.69E-03	2.26E-03	NA	NA	1.34E-04	2.19E-04	NA	NA	7.34E-04	1.05E-02	NA
rs116449238	RP11-472N13.3	1.85E-02	5.42E-03	NA	NA	1.93E-04	3.48E-04	NA	NA	2.74E-03	4.83E-02	NA
rs9888015	RP11-472N13.3	3.31E-02	9.84E-03	NA	NA	2.13E-04	3.82E-04	NA	NA	3.12E-03	5.55E-02	NA
rs76942454	MIR5100-RET	NA	NA	5.65E-05	3.19E-05	NA	NA	6.11E-04	1.36E-03	NA	NA	1.58E-01
rs74361869	MIR5100-RET	NA	NA	4.14E-05	1.85E-05	NA	NA	8.33E-04	2.06E-03	NA	NA	5.30E-01
rs75381638	MIR5100-RET	NA	NA	4.25E-05	1.89E-05	NA	NA	8.17E-04	2.04E-03	NA	NA	5.30E-01
rs3026705	MIR5100-RET	NA	NA	4.92E-05	2.09E-05	NA	NA	7.51E-04	2.00E-03	NA	NA	5.27E-01
rs3026713	MIR5100-RET	NA	NA	6.54E-05	2.75E-05	NA	NA	5.89E-04	1.91E-03	NA	NA	5.28E-01
rs3026721	MIR5100-RET	NA	NA	5.32E-05	6.84E-05	NA	NA	1.15E-03	5.07E-03	NA	NA	5.50E-01
rs80080342	RET,MIR5100-RET	NA	NA	8.63E-05	1.25E-04	NA	NA	9.98E-04	4.71E-03	NA	NA	6.00E-01
rs74865054	RET	NA	NA	7.91E-05	1.09E-04	NA	NA	9.94E-04	4.28E-03	NA	NA	5.76E-01
rs77154599	RET	NA	NA	8.81E-05	1.25E-04	NA	NA	1.01E-03	4.62E-03	NA	NA	5.92E-01
rs74438020	RET	NA	NA	9.69E-05	1.35E-04	NA	NA	9.84E-04	4.13E-03	NA	NA	6.05E-01
chr10:43579081:D	RET	NA	NA	9.72E-05	1.35E-04	NA	NA	9.84E-04	4.11E-03	NA	NA	6.05E-01
rs77776459	RET	NA	NA	1.02E-04	1.41E-04	NA	NA	9.84E-04	3.96E-03	NA	NA	6.10E-01
rs76568066	RET	NA	NA	1.88E-04	3.46E-04	NA	NA	7.01E-04	2.36E-03	NA	NA	6.73E-01
rs76837320	RET	NA	NA	1.93E-04	3.53E-04	NA	NA	5.23E-04	1.69E-03	NA	NA	6.77E-01
rs74400468	RET	4.40E-01	1.77E-01	1.17E-04	2.86E-04	8.25E-01	4.88E-01	3.02E-04	9.01E-04	1.19E-02	2.68E-02	8.53E-01
rs142883467	RET	NA	NA	1.85E-04	3.09E-04	NA	NA	2.59E-04	7.62E-04	NA	NA	6.98E-01

rs11238474	RASGEF1A	NA	NA	9.05E-04	1.96E-03	4.91E-02	1.80E-02	2.28E-03	2.57E-04	2.91E-02	8.03E-02	9.23E-01
rs10762724	C10orf11	6.54E-04	1.08E-02	5.05E-01	7.61E-01	5.29E-02	2.38E-02	1.99E-02	3.07E-02	1.85E-01	1.12E-01	6.75E-01
rs146091982	SLC35G1,SLC35G1,SLC35G1	1.59E-02	8.51E-02	NA	NA	5.82E-05	1.53E-03	NA	NA	1.21E-01	1.70E-01	NA
chr10:95669221:D	SLC35G1	1.46E-02	6.38E-02	NA	NA	4.81E-04	1.10E-02	NA	NA	3.34E-02	5.58E-02	NA
rs115058152	ENTPD1	1.38E-01	7.39E-02	1.09E-01	7.17E-02	1.77E-06	1.26E-04	2.82E-02	2.73E-02	2.70E-01	1.68E-01	2.05E-01
rs11575631	HABP2	2.51E-02	6.88E-02	3.92E-01	1.62E-01	1.26E-06	3.32E-06	3.52E-01	4.29E-01	4.58E-01	5.37E-01	1.63E-02
rs11575634	HABP2	3.29E-02	8.12E-02	4.03E-01	1.72E-01	1.05E-06	2.82E-06	3.52E-01	4.29E-01	4.79E-01	5.73E-01	1.65E-02
rs4643011	HABP2	3.09E-02	7.32E-02	4.19E-01	1.98E-01	7.21E-07	2.21E-06	3.92E-01	4.47E-01	5.09E-01	6.27E-01	1.35E-02
rs73443003	PRMT3-RP11-701I24.1	1.66E-04	3.50E-03	NA	NA	7.22E-03	1.72E-02	NA	NA	1.98E-02	5.43E-03	1.03E-02
rs12278342	CCDC179,RP11-17A1.3	6.32E-02	7.11E-01	3.23E-03	6.30E-03	3.00E-01	5.75E-01	2.49E-03	7.95E-03	9.11E-01	6.06E-01	8.52E-02
chr11:22884459:D	CCDC179,RP11-17A1.3	5.69E-02	6.78E-01	3.23E-03	6.30E-03	3.07E-01	5.87E-01	2.37E-03	7.51E-03	9.10E-01	6.04E-01	8.23E-02
rs12293401	CCDC179,RP11-17A1.3	1.64E-01	7.98E-01	1.59E-03	5.44E-03	8.62E-01	7.00E-01	3.15E-03	1.08E-02	2.21E-01	2.95E-01	1.29E-01
rs12294894	CCDC179,RP11-17A1.3	5.14E-02	6.49E-01	3.22E-03	6.28E-03	3.14E-01	5.97E-01	2.26E-03	7.11E-03	9.09E-01	6.02E-01	7.93E-02
chr11:22885400:D	CCDC179,RP11-17A1.3	3.38E-01	8.32E-01	3.49E-03	7.68E-03	4.34E-01	6.22E-01	2.01E-03	6.82E-03	9.32E-01	7.02E-01	6.92E-02
rs72865358	CCDC179,RP11-17A1.3	1.61E-01	7.96E-01	1.59E-03	5.43E-03	7.50E-01	6.25E-01	3.12E-03	1.07E-02	2.22E-01	2.97E-01	1.28E-01
rs4540836	CCDC179,RP11-17A1.3	2.08E-01	9.69E-01	8.48E-04	3.23E-03	9.82E-01	7.75E-01	4.88E-03	1.67E-02	2.40E-01	2.45E-01	1.32E-01
rs4459305	CCDC179,RP11-17A1.3	2.02E-01	9.87E-01	7.24E-04	2.84E-03	9.63E-01	7.82E-01	4.87E-03	1.67E-02	2.85E-01	2.76E-01	1.77E-01
rs4427562	CCDC179,RP11-17A1.3	2.26E-01	9.55E-01	5.93E-04	2.55E-03	9.63E-01	8.16E-01	4.93E-03	1.66E-02	2.33E-01	2.19E-01	1.78E-01
rs7946163	RP11-17A1.3	1.75E-01	8.74E-01	1.58E-03	5.40E-03	7.90E-01	6.01E-01	3.09E-03	1.06E-02	2.32E-01	2.73E-01	1.25E-01
rs12275725	RP11-17A1.3	2.32E-01	9.13E-01	7.91E-04	3.05E-03	9.76E-01	7.37E-01	4.84E-03	1.65E-02	2.52E-01	2.26E-01	1.72E-01
rs4922632	RP11-17A1.3	2.63E-01	8.39E-01	7.80E-04	2.99E-03	9.85E-01	7.48E-01	4.79E-03	1.58E-02	2.66E-01	2.41E-01	1.70E-01
rs61889513	RP11-17A1.3	5.02E-02	6.36E-01	3.17E-03	6.15E-03	3.59E-01	6.65E-01	2.15E-03	6.05E-03	9.22E-01	6.03E-01	7.54E-02
rs12292718	RP11-17A1.3	2.29E-01	9.42E-01	4.50E-04	1.62E-03	9.65E-01	7.37E-01	4.75E-03	1.67E-02	2.64E-01	2.40E-01	1.81E-01
rs12292974	RP11-17A1.3	1.56E-01	8.26E-01	1.36E-03	4.42E-03	8.99E-01	7.65E-01	4.65E-03	1.39E-02	1.74E-01	1.78E-01	1.07E-01
rs4384387	RP11-17A1.3	2.70E-01	9.35E-01	5.21E-04	1.47E-03	8.97E-01	8.04E-01	3.81E-03	1.02E-02	2.27E-01	2.13E-01	1.45E-01
rs4244495	RP11-17A1.3	2.12E-01	9.08E-01	2.88E-04	8.93E-04	7.86E-01	9.21E-01	3.56E-03	8.84E-03	2.77E-01	2.34E-01	1.49E-01
rs4923035	RP11-17A1.3	2.70E-01	9.35E-01	5.19E-04	1.47E-03	8.87E-01	8.27E-01	3.77E-03	1.01E-02	2.27E-01	2.14E-01	1.44E-01
rs4486627	RP11-17A1.3	1.65E-01	8.41E-01	9.82E-04	2.40E-03	8.69E-01	8.43E-01	3.81E-03	1.01E-02	1.65E-01	1.67E-01	9.90E-02
rs4495893	RP11-17A1.3	1.65E-01	8.39E-01	9.79E-04	2.39E-03	8.69E-01	8.43E-01	3.81E-03	1.01E-02	1.65E-01	1.68E-01	9.86E-02
rs4255538	RP11-17A1.3	1.65E-01	8.39E-01	9.79E-04	2.39E-03	8.69E-01	8.43E-01	3.81E-03	1.01E-02	1.66E-01	1.68E-01	9.86E-02
rs4466830	RP11-17A1.3	1.79E-01	9.04E-01	7.33E-04	1.83E-03	8.78E-01	7.81E-01	3.80E-03	1.01E-02	1.92E-01	1.76E-01	1.05E-01
chr11:22894411:D	RP11-17A1.3	1.65E-01	8.36E-01	9.67E-04	2.35E-03	8.70E-01	8.42E-01	3.81E-03	1.01E-02	1.67E-01	1.70E-01	9.72E-02
rs12284580	RP11-17A1.3	1.75E-01	8.74E-01	7.58E-04	1.86E-03	9.43E-01	7.36E-01	3.81E-03	1.01E-02	1.86E-01	1.61E-01	9.40E-02
rs12277600	RP11-17A1.3	1.63E-01	8.24E-01	9.30E-04	2.23E-03	8.72E-01	8.38E-01	4.19E-03	1.00E-02	1.72E-01	1.77E-01	9.24E-02
rs9783311	RP11-17A1.3	1.69E-01	8.61E-01	1.31E-03	2.86E-03	9.51E-01	7.48E-01	2.40E-03	9.74E-03	1.82E-01	1.60E-01	1.18E-01
rs9783404	RP11-17A1.3	2.09E-01	9.23E-01	6.08E-04	1.32E-03	7.87E-01	9.36E-01	3.55E-03	9.59E-03	2.54E-01	2.58E-01	1.28E-01
rs12284600	RP11-17A1.3	2.51E-01	7.63E-01	8.98E-04	1.77E-03	5.21E-01	2.96E-01	3.87E-03	9.45E-03	2.93E-01	3.59E-01	7.12E-02
rs12284602	RP11-17A1.3	2.34E-01	8.81E-01	7.72E-04	1.58E-03	9.70E-01	7.36E-01	3.88E-03	9.46E-03	2.56E-01	2.96E-01	6.99E-02
chr11:22898264:I	RP11-17A1.3	4.10E-01	8.26E-01	2.26E-04	4.60E-04	9.51E-01	8.05E-01	1.12E-02	2.38E-02	3.14E-01	3.05E-01	7.06E-02
rs10488701	RP11-17A1.3	1.28E-01	9.33E-01	3.17E-03	5.58E-03	4.43E-01	7.24E-01	1.97E-03	5.18E-03	9.92E-01	6.05E-01	5.54E-02
rs2429779	RP11-17A1.3	2.83E-01	9.81E-01	7.23E-04	1.47E-03	9.65E-01	7.77E-01	3.43E-03	8.98E-03	2.02E-01	2.65E-01	7.00E-02
rs11026825	RP11-17A1.3	2.79E-01	9.60E-01	7.67E-04	1.71E-03	9.97E-01	7.69E-01	7.06E-03	1.34E-02	2.32E-01	2.95E-01	9.07E-02
rs12290230	RP11-17A1.3	2.26E-01	9.61E-01	7.73E-04	1.58E-03	9.85E-01	6.94E-01	3.87E-03	9.45E-03	1.80E-01	2.51E-01	6.97E-02
rs2403776	RP11-17A1.3	2.94E-01	9.91E-01	7.73E-04	1.58E-03	9.68E-01	7.75E-01	3.89E-03	9.48E-03	2.05E-01	2.69E-01	6.97E-02
rs2429777	RP11-17A1.3	2.94E-01	9.91E-01	7.73E-04	1.58E-03	9.67E-01	7.77E-01	3.87E-03	9.47E-03	2.05E-01	2.69E-01	6.97E-02
rs2253956	RP11-17A1.3	2.94E-01	9.91E-01	7.73E-04	1.58E-03	9.68E-01	7.75E-01	3.89E-03	9.48E-03	2.05E-01	2.69E-01	6.97E-02

rs2429776	RP11-17A1.3	2.95E-01	9.96E-01	6.20E-04	1.30E-03	9.59E-01	7.77E-01	3.90E-03	9.42E-03	1.95E-01	2.28E-01	7.31E-02
rs2429775	RP11-17A1.3	2.18E-01	8.47E-01	1.85E-04	3.16E-04	9.27E-01	8.39E-01	3.26E-02	2.03E-02	2.05E-01	2.50E-01	3.21E-02
rs2429774	RP11-17A1.3	1.34E-01	9.21E-01	3.17E-03	5.59E-03	4.06E-01	7.23E-01	2.05E-03	5.18E-03	9.87E-01	5.69E-01	5.45E-02
rs2470329	RP11-17A1.3	3.48E-01	8.95E-01	4.70E-04	9.36E-04	9.19E-01	8.20E-01	4.02E-03	9.44E-03	3.12E-01	3.67E-01	1.02E-01
chr11:22903503:I	RP11-17A1.3	3.09E-01	9.74E-01	7.18E-04	1.49E-03	9.83E-01	7.57E-01	7.51E-03	1.70E-02	2.05E-01	2.68E-01	7.09E-02
rs2429773	RP11-17A1.3	3.11E-01	9.57E-01	5.94E-04	1.18E-03	9.09E-01	6.80E-01	5.87E-03	1.48E-02	2.13E-01	2.84E-01	7.36E-02
rs4296039	RP11-17A1.3	3.03E-01	9.78E-01	7.94E-04	1.63E-03	9.90E-01	7.46E-01	4.16E-03	9.58E-03	2.05E-01	2.68E-01	6.97E-02
rs4543991	RP11-17A1.3	3.04E-01	9.77E-01	8.13E-04	1.67E-03	9.93E-01	7.41E-01	4.22E-03	9.60E-03	2.06E-01	2.68E-01	6.97E-02
rs2470309	RP11-17A1.3	3.12E-01	9.64E-01	7.52E-04	1.59E-03	9.66E-01	8.37E-01	4.23E-03	9.61E-03	2.09E-01	2.65E-01	6.97E-02
rs2470308	RP11-17A1.3	1.38E-01	9.31E-01	3.33E-03	5.86E-03	4.09E-01	7.33E-01	2.14E-03	5.20E-03	9.87E-01	5.69E-01	5.45E-02
rs2470306	RP11-17A1.3	3.05E-01	9.77E-01	8.40E-04	1.72E-03	9.99E-01	7.34E-01	4.29E-03	9.64E-03	2.06E-01	2.67E-01	6.96E-02
rs2429772	RP11-17A1.3	3.79E-01	8.60E-01	4.53E-04	9.14E-04	9.55E-01	7.61E-01	4.28E-03	9.54E-03	3.12E-01	3.33E-01	1.02E-01
rs2429771	RP11-17A1.3	3.05E-01	9.76E-01	8.54E-04	1.75E-03	9.99E-01	7.30E-01	4.34E-03	9.65E-03	2.06E-01	2.67E-01	6.97E-02
rs2429770	RP11-17A1.3	3.05E-01	9.76E-01	8.58E-04	1.76E-03	9.98E-01	7.29E-01	4.35E-03	9.66E-03	2.06E-01	2.67E-01	6.97E-02
rs2429769	RP11-17A1.3	3.05E-01	9.75E-01	8.63E-04	1.77E-03	9.97E-01	7.28E-01	4.37E-03	9.66E-03	2.06E-01	2.67E-01	6.97E-02
chr11:22907658:D	RP11-17A1.3	2.96E-01	9.85E-01	1.37E-03	2.39E-03	9.77E-01	7.38E-01	3.89E-03	1.07E-02	2.03E-01	2.60E-01	7.55E-02
rs2429768	RP11-17A1.3	3.41E-01	9.01E-01	2.12E-04	4.89E-04	9.69E-01	7.25E-01	1.39E-02	3.18E-02	3.04E-01	3.19E-01	1.18E-01
rs2429767	RP11-17A1.3	2.96E-01	9.80E-01	9.09E-04	1.78E-03	9.92E-01	7.21E-01	4.17E-03	9.38E-03	2.06E-01	2.65E-01	7.27E-02
rs2429766	RP11-17A1.3	2.96E-01	9.80E-01	9.19E-04	1.80E-03	9.90E-01	7.18E-01	4.20E-03	9.40E-03	2.06E-01	2.65E-01	7.27E-02
rs2470304	RP11-17A1.3	3.01E-01	9.69E-01	9.29E-04	1.82E-03	8.83E-01	6.45E-01	4.21E-03	9.39E-03	2.06E-01	2.65E-01	7.27E-02
rs2470303	RP11-17A1.3	2.97E-01	9.79E-01	9.30E-04	1.82E-03	9.88E-01	7.16E-01	4.23E-03	9.41E-03	2.06E-01	2.65E-01	7.27E-02
rs2429765	RP11-17A1.3	2.98E-01	9.78E-01	9.59E-04	1.88E-03	9.83E-01	7.10E-01	4.30E-03	9.44E-03	2.06E-01	2.64E-01	7.27E-02
rs2429764	RP11-17A1.3	3.71E-01	8.63E-01	5.22E-04	1.00E-03	9.74E-01	7.37E-01	4.30E-03	9.36E-03	3.12E-01	3.29E-01	1.06E-01
rs2429763	RP11-17A1.3	3.72E-01	8.62E-01	5.33E-04	1.03E-03	9.76E-01	7.33E-01	4.35E-03	9.38E-03	3.13E-01	3.29E-01	1.06E-01
chr11:22910682:I	RP11-17A1.3	2.85E-01	9.57E-01	8.38E-04	1.74E-03	9.90E-01	7.07E-01	4.85E-03	1.18E-02	1.83E-01	2.89E-01	5.43E-02
rs2429761	RP11-17A1.3	3.73E-01	8.62E-01	5.52E-04	1.06E-03	9.81E-01	7.27E-01	4.43E-03	9.42E-03	3.13E-01	3.28E-01	1.06E-01
rs983867	RP11-17A1.3	2.99E-01	9.78E-01	1.04E-03	2.02E-03	9.98E-01	7.32E-01	4.50E-03	9.53E-03	2.06E-01	2.64E-01	7.27E-02
rs2429760	RP11-17A1.3	3.02E-01	9.74E-01	1.13E-03	2.20E-03	8.94E-01	6.17E-01	4.77E-03	9.73E-03	2.07E-01	2.62E-01	7.26E-02
rs113236916	RP11-17A1.3	3.02E-01	9.74E-01	1.14E-03	2.22E-03	9.60E-01	6.80E-01	4.73E-03	9.63E-03	2.07E-01	2.62E-01	7.26E-02
rs56892416	RP11-17A1.3	3.07E-01	9.70E-01	1.04E-03	1.98E-03	9.20E-01	6.56E-01	4.70E-03	9.56E-03	2.19E-01	2.92E-01	7.41E-02
rs987866	RP11-17A1.3	3.05E-01	9.86E-01	9.38E-04	1.88E-03	9.72E-01	6.85E-01	4.70E-03	9.56E-03	1.98E-01	2.22E-01	7.57E-02
rs987865	RP11-17A1.3	1.83E-01	9.83E-01	4.59E-03	7.79E-03	4.05E-01	7.52E-01	2.39E-03	5.10E-03	9.78E-01	5.31E-01	5.71E-02
rs2470301	RP11-17A1.3	2.37E-01	9.22E-01	7.73E-04	1.38E-03	8.63E-01	8.78E-01	4.70E-03	9.56E-03	2.22E-01	3.03E-01	7.66E-02
rs2429757	RP11-17A1.3	1.99E-01	8.40E-01	1.08E-03	2.02E-03	9.60E-01	7.55E-01	4.70E-03	9.56E-03	1.89E-01	2.54E-01	7.26E-02
rs2470300	RP11-17A1.3	1.90E-01	9.67E-01	4.75E-03	8.13E-03	4.05E-01	7.51E-01	2.37E-03	5.07E-03	9.78E-01	5.31E-01	5.71E-02
rs2429756	RP11-17A1.3	1.99E-01	8.41E-01	1.08E-03	2.03E-03	9.60E-01	7.55E-01	4.70E-03	9.56E-03	1.89E-01	2.54E-01	7.26E-02
rs2429755	RP11-17A1.3	1.99E-01	8.41E-01	1.08E-03	2.03E-03	9.60E-01	7.55E-01	4.70E-03	9.56E-03	1.89E-01	2.54E-01	7.26E-02
rs2429754	RP11-17A1.3	1.99E-01	8.41E-01	1.08E-03	2.03E-03	9.60E-01	7.55E-01	4.70E-03	9.56E-03	1.89E-01	2.54E-01	7.26E-02
rs2429753	RP11-17A1.3	1.99E-01	8.41E-01	1.08E-03	2.03E-03	9.60E-01	7.55E-01	4.70E-03	9.56E-03	1.89E-01	2.54E-01	7.26E-02
rs2041471	RP11-17A1.3	2.56E-01	9.55E-01	5.86E-04	1.08E-03	9.16E-01	7.83E-01	4.66E-03	9.46E-03	2.89E-01	3.18E-01	1.06E-01
rs2429752	RP11-17A1.3	2.05E-01	8.78E-01	1.08E-03	2.03E-03	9.88E-01	6.96E-01	4.62E-03	9.38E-03	2.06E-01	2.61E-01	7.06E-02
rs2429751	RP11-17A1.3	1.90E-01	9.65E-01	4.67E-03	7.96E-03	4.05E-01	7.49E-01	2.28E-03	4.84E-03	9.80E-01	5.32E-01	5.73E-02
rs929538	RP11-17A1.3	1.30E-01	6.47E-01	4.52E-03	7.28E-03	3.41E-01	6.05E-01	1.56E-03	2.87E-03	7.00E-01	4.10E-01	6.99E-02
chr11:81433204:I	RP11-664H7.2-RP11-876F14.2	1.38E-04	3.16E-05	3.70E-01	8.58E-01	1.16E-02	1.01E-01	9.10E-01	4.67E-01	1.49E-03	8.81E-04	9.76E-01
chr11:81454803:D	RP11-664H7.2-RP11-876F14.2	6.63E-05	2.33E-06	4.26E-01	8.25E-01	1.55E-01	8.32E-01	6.55E-01	2.09E-01	3.39E-03	1.04E-02	6.84E-01
rs116474042	RP11-755E23.3-CCDC67	3.81E-07	1.88E-04	NA	NA	7.60E-01	9.90E-01	NA	NA	5.20E-01	4.06E-01	NA

rs116617578	CCDC67	1.91E-06	2.12E-04	NA	NA	NA	NA	NA	NA	7.25E-01	4.15E-01	NA
rs12807443	RP11-25I9.2	NA	NA	4.52E-02	5.69E-02	2.73E-01	3.10E-01	4.91E-04	6.02E-02	2.20E-01	2.83E-01	3.44E-02
rs71475112	RP11-25I9.2	4.73E-01	1.31E-01	4.04E-02	4.96E-02	9.95E-01	9.09E-01	5.53E-04	6.48E-02	6.36E-01	7.59E-01	2.00E-02
rs34883645	RP11-25I9.2	4.52E-01	1.18E-01	4.15E-02	5.12E-02	9.93E-01	8.90E-01	5.00E-04	6.04E-02	5.94E-01	7.34E-01	2.85E-02
rs17705117	RP11-25I9.2	4.52E-01	1.19E-01	4.15E-02	5.12E-02	9.93E-01	8.90E-01	5.01E-04	6.04E-02	5.94E-01	7.34E-01	2.85E-02
rs10502107	RP11-25I9.2	NA	NA	4.70E-02	6.05E-02	NA	NA	6.61E-04	5.33E-02	2.54E-01	3.11E-01	2.88E-02
rs71475113	RP11-25I9.2	4.80E-01	1.43E-01	4.68E-02	5.99E-02	9.88E-01	9.05E-01	6.83E-04	5.38E-02	6.40E-01	7.71E-01	2.55E-02
rs74640618	RP11-25I9.2	4.80E-01	1.43E-01	4.68E-02	5.99E-02	9.96E-01	8.95E-01	6.71E-04	5.89E-02	6.37E-01	7.71E-01	2.55E-02
chr11:108899423:D	RP11-25I9.2	3.27E-01	2.65E-01	8.54E-03	1.25E-02	8.04E-01	9.34E-01	1.92E-04	5.59E-02	1.93E-01	1.26E-01	2.32E-02
rs12785289	RP11-25I9.2	5.73E-01	1.82E-01	4.67E-02	5.97E-02	7.77E-01	6.94E-01	7.07E-04	5.49E-02	6.38E-01	7.72E-01	2.54E-02
rs71475116	P11-25I9.2,RP11-25I9.2-RNA5SP34	3.34E-01	6.93E-02	4.61E-02	6.29E-02	9.25E-01	7.10E-01	1.66E-03	8.04E-02	9.11E-01	9.87E-01	6.18E-03
rs145386102	RP11-25I9.2-RNA5SP349	3.40E-01	8.46E-02	6.01E-02	7.36E-02	9.12E-01	8.87E-01	5.84E-04	6.08E-02	6.64E-01	7.85E-01	2.30E-02
rs6589099	TFAMP2-RP11-361A21.1	7.71E-04	2.06E-03	NA	NA	2.95E-04	1.27E-03	NA	NA	6.02E-03	3.08E-03	2.62E-01
rs4763938	CD69-RP11-75L1.6	1.43E-04	2.20E-04	9.01E-02	8.96E-02	1.21E-01	3.99E-01	1.72E-01	2.71E-01	4.24E-02	1.62E-02	1.24E-01
rs193047854	RNU1-69P-GSTP1P1	6.49E-05	2.84E-04	NA	NA	3.90E-03	7.33E-04	NA	NA	5.43E-01	8.74E-01	NA
rs963921	RP11-13A1.3	1.13E-04	1.76E-04	6.55E-01	7.02E-01	1.84E-01	2.65E-01	1.55E-01	1.48E-01	3.39E-02	1.55E-02	9.54E-01
rs61934921	A5SP377,RP11-495K9.6,RP11-495K	3.96E-01	5.52E-01	1.65E-04	6.20E-05	4.76E-01	7.31E-01	1.70E-02	8.07E-02	5.50E-01	3.81E-01	1.36E-01
rs149438816	RP11-196P2.1-MIR3169	8.54E-05	1.66E-06	NA	NA	1.18E-01	1.70E-01	NA	NA	6.58E-02	1.72E-01	NA
rs116063167	BCAS2P3-RBM26	4.79E-03	4.50E-03	NA	NA	1.29E-01	5.64E-02	NA	NA	1.38E-04	6.25E-05	NA
rs116444748	BCAS2P3-RBM26	4.70E-03	4.45E-03	NA	NA	1.33E-01	5.77E-02	NA	NA	1.24E-04	6.22E-05	NA
rs10162069	BCAS2P3-RBM26	1.66E-02	1.74E-02	NA	NA	8.09E-06	4.19E-04	NA	NA	1.90E-01	2.02E-01	NA
rs9601205	BCAS2P3-RBM26	1.45E-02	1.61E-02	NA	NA	7.97E-06	3.20E-04	NA	NA	1.38E-01	1.34E-01	NA
rs9601206	BCAS2P3-RBM26	1.44E-02	1.61E-02	NA	NA	7.95E-06	3.19E-04	NA	NA	1.37E-01	1.34E-01	NA
rs79256830	BCAS2P3-RBM26	1.43E-02	1.59E-02	NA	NA	7.96E-06	3.18E-04	NA	NA	1.37E-01	1.33E-01	NA
rs2329115	BCAS2P3-RBM26	4.76E-02	2.65E-02	NA	NA	3.15E-06	1.02E-04	NA	NA	3.20E-01	3.57E-01	NA
rs4885623	BCAS2P3-RBM26	3.43E-02	1.98E-02	NA	NA	2.75E-06	5.40E-05	NA	NA	2.88E-01	3.66E-01	NA
rs143748364	BCAS2P3-RBM26	5.60E-03	6.55E-03	NA	NA	3.09E-06	1.00E-04	NA	NA	1.37E-01	1.55E-01	NA
rs116669275	RBM26,RBM26-AS1	7.78E-03	1.10E-02	NA	NA	1.29E-04	3.02E-03	NA	NA	4.57E-02	3.40E-02	NA
rs9601228	RBM26-AS1	7.58E-03	1.08E-02	NA	NA	1.33E-04	3.10E-03	NA	NA	4.66E-02	3.45E-02	NA
rs9601230	RBM26-AS1-NDFIP2-AS1	6.66E-03	7.77E-03	NA	NA	1.59E-04	3.74E-03	NA	NA	4.33E-02	3.54E-02	NA
rs9593398	RBM26-AS1-NDFIP2-AS1	4.99E-03	5.67E-03	NA	NA	1.40E-04	3.51E-03	NA	NA	4.52E-02	3.41E-02	NA
chr13:80031949:D	RBM26-AS1-NDFIP2-AS1	5.00E-03	4.35E-03	NA	NA	2.88E-04	4.85E-03	NA	NA	1.14E-01	1.01E-01	NA
rs79054219	NDFIP2,NDFIP2-AS1	9.31E-03	8.91E-03	NA	NA	1.35E-04	3.70E-03	NA	NA	4.10E-02	3.08E-02	NA
rs115435584	NDFIP2	9.85E-03	6.84E-03	NA	NA	3.34E-04	5.69E-03	NA	NA	8.85E-02	6.88E-02	NA
rs9601236	NDFIP2	1.45E-02	1.15E-02	NA	NA	1.48E-04	3.76E-03	NA	NA	3.03E-02	1.92E-02	NA
rs114858730	NDFIP2	6.32E-03	6.13E-03	NA	NA	4.17E-04	5.35E-03	NA	NA	5.67E-02	3.76E-02	NA
rs77796609	NDFIP2	1.45E-02	1.15E-02	NA	NA	1.49E-04	3.78E-03	NA	NA	2.97E-02	1.87E-02	NA
rs76602452	NDFIP2	1.44E-02	1.14E-02	NA	NA	1.51E-04	3.80E-03	NA	NA	2.95E-02	1.86E-02	NA
rs116284533	NDFIP2	1.13E-02	8.19E-03	NA	NA	3.47E-04	5.79E-03	NA	NA	8.65E-02	6.67E-02	NA
rs9593403	NDFIP2,NDFIP2-LINC01068	8.20E-03	5.52E-03	NA	NA	2.92E-04	4.38E-03	NA	NA	8.54E-02	6.57E-02	NA
rs115651893	NDFIP2,NDFIP2-LINC01068	1.22E-02	9.37E-03	NA	NA	1.22E-04	2.72E-03	NA	NA	2.94E-02	1.84E-02	NA
rs13378140	LINC01068	8.39E-03	5.51E-03	NA	NA	2.77E-04	4.17E-03	NA	NA	8.48E-02	6.55E-02	NA
rs138672395	LINC01068	8.40E-03	5.51E-03	NA	NA	2.77E-04	4.18E-03	NA	NA	8.49E-02	6.56E-02	NA
rs9601245	LINC01068-LINC01038	8.90E-03	5.28E-03	NA	NA	2.93E-04	4.24E-03	NA	NA	8.56E-02	6.65E-02	NA
rs9601246	LINC01068-LINC01038	9.00E-03	5.21E-03	NA	NA	2.96E-04	4.26E-03	NA	NA	8.58E-02	6.67E-02	NA
rs9514837	TNFSF13B-HCFC2P1	7.35E-05	1.80E-04	8.63E-01	5.87E-01	1.26E-02	1.68E-04	1.23E-01	9.25E-01	1.72E-01	2.93E-01	4.74E-01

rs9520847	TNFSF13B-HCFC2P1	8.72E-05	2.79E-04	8.15E-01	6.43E-01	1.18E-02	2.25E-04	2.95E-01	8.47E-01	2.41E-01	3.80E-01	6.61E-01
rs7143485	CTD-2552B11.2-CTD-2552B11.3	2.37E-04	2.20E-03	4.83E-01	5.00E-01	2.78E-01	3.40E-01	1.00E+00	7.37E-01	1.06E-03	3.19E-04	4.65E-01
rs7143702	CTD-2552B11.2-CTD-2552B11.3	2.40E-04	2.18E-03	4.84E-01	5.00E-01	2.70E-01	3.23E-01	9.99E-01	7.35E-01	1.05E-03	3.18E-04	4.74E-01
rs77669601	RP3-514A23.2-DPF3	NA	NA	1.80E-03	3.29E-02	NA	NA	6.22E-05	1.26E-01	3.07E-01	1.35E-01	4.40E-01
chr14:73068127:D	RP3-514A23.2-DPF3	NA	NA	1.85E-03	3.39E-02	NA	NA	6.37E-05	1.28E-01	6.91E-01	2.16E-01	4.19E-01
rs144429502	AC005280.1,C14orf169,HEATR4	NA	NA	1.04E-05	4.14E-04	NA	NA	3.43E-02	2.72E-01	2.27E-01	7.83E-01	4.89E-01
rs999683	IE3,SYNE3,SYNE3,SYNE3,SYNE3,SY	1.05E-04	1.72E-03	1.44E-01	1.49E-01	1.84E-02	2.95E-03	8.93E-02	5.58E-01	9.81E-01	6.85E-01	1.06E-01
rs674117	RP11-96O20.4,SQRDL	4.91E-01	9.46E-01	2.50E-04	7.61E-05	7.46E-01	9.01E-01	2.73E-02	3.72E-02	4.79E-01	2.47E-01	5.42E-02
rs674638	RP11-96O20.4,SQRDL	5.10E-01	9.60E-01	2.57E-04	8.48E-05	7.31E-01	8.91E-01	2.47E-02	3.54E-02	5.04E-01	2.49E-01	5.45E-02
rs674676	RP11-96O20.4,SQRDL	5.07E-01	9.59E-01	2.42E-04	7.46E-05	7.31E-01	8.91E-01	2.45E-02	3.52E-02	4.78E-01	2.50E-01	5.65E-02
rs663992	RP11-96O20.4,SQRDL	5.09E-01	9.83E-01	6.42E-04	1.03E-05	7.55E-01	9.20E-01	4.62E-02	8.41E-02	4.38E-01	2.42E-01	4.55E-02
rs675599	RP11-96O20.4,SQRDL	3.33E-01	9.56E-01	4.46E-04	1.45E-04	9.55E-01	7.96E-01	1.87E-02	2.75E-02	3.96E-01	2.17E-01	7.04E-02
rs664768	RP11-96O20.4,SQRDL	4.53E-01	8.67E-01	2.80E-04	1.30E-04	8.39E-01	9.58E-01	1.93E-02	3.30E-02	4.86E-01	2.49E-01	5.22E-02
rs664824	RP11-96O20.4,SQRDL	4.80E-01	9.45E-01	2.84E-04	1.04E-04	6.98E-01	8.18E-01	2.32E-02	3.41E-02	3.85E-01	2.01E-01	7.60E-02
rs676476	RP11-96O20.4,SQRDL	2.87E-01	7.96E-01	4.84E-04	1.36E-04	5.85E-01	8.00E-01	1.33E-02	2.29E-02	3.40E-01	1.38E-01	5.35E-02
rs189167038	SNORD11-RNU6-1014P	NA	NA	NA	NA	2.64E-09	1.06E-04	NA	NA	9.88E-01	6.30E-01	NA
rs142162415	SNORD11-RNU6-1014P	NA	NA	NA	NA	1.88E-08	3.94E-05	NA	NA	8.44E-01	7.50E-01	NA
rs117047810	SNORD11-RNU6-1014P	NA	NA	NA	NA	5.68E-08	1.05E-04	NA	NA	9.98E-01	9.10E-01	NA
rs144014689	MEGF11	5.33E-02	7.87E-02	8.27E-01	8.35E-01	3.38E-02	5.10E-02	2.05E-01	7.21E-01	4.83E-06	1.52E-03	5.82E-01
rs138761776	MEFV	1.22E-02	2.75E-02	NA	NA	1.73E-06	1.57E-03	NA	NA	6.98E-01	5.85E-02	NA
rs11466037	MEFV	6.91E-03	6.93E-03	NA	NA	8.08E-07	1.85E-03	NA	NA	6.20E-01	4.29E-02	NA
rs11466035	MEFV	1.57E-02	3.16E-02	NA	NA	1.00E-05	4.75E-03	NA	NA	9.57E-01	1.47E-01	NA
rs7185672	MEFV	9.28E-03	2.46E-02	NA	NA	1.41E-06	1.49E-03	NA	NA	7.02E-01	5.93E-02	NA
rs183568578	MEFV	2.67E-03	1.14E-02	NA	NA	5.62E-07	1.12E-03	NA	NA	6.33E-01	4.78E-02	NA
rs57491015	MEFV	2.62E-03	1.11E-02	NA	NA	1.35E-06	1.46E-03	NA	NA	7.36E-01	6.63E-02	NA
rs145826624	MEFV	2.77E-03	1.19E-02	NA	NA	1.35E-06	1.46E-03	NA	NA	7.04E-01	6.10E-02	NA
rs115453411	MEFV	2.77E-03	1.19E-02	NA	NA	1.35E-06	1.46E-03	NA	NA	7.03E-01	6.10E-02	NA
rs77086855	MEFV,MEFV,MEFV,MEFV,MEFV	4.39E-03	1.42E-02	NA	NA	4.32E-06	3.65E-03	NA	NA	9.70E-01	1.56E-01	NA
rs16953145	FTO-RP11-324D17.2	1.04E-03	1.29E-03	NA	NA	2.10E-03	9.53E-05	NA	NA	4.70E-02	9.30E-02	NA
rs16953148	FTO-RP11-324D17.2	1.10E-03	1.52E-03	NA	NA	4.23E-03	2.18E-04	NA	NA	4.63E-02	9.35E-02	NA
rs61326721	FTO-RP11-324D17.2	1.28E-03	2.14E-03	NA	NA	4.38E-03	2.72E-04	NA	NA	6.10E-02	1.23E-01	NA
rs984432	RP11-481J2.2,GINS3-RP11-481J2.2	3.16E-05	1.45E-04	NA	NA	2.60E-02	3.09E-02	NA	NA	3.28E-01	4.09E-01	NA
rs60090586	RP11-481J2.2,GINS3-RP11-481J2.2	3.15E-05	1.45E-04	NA	NA	2.59E-02	3.08E-02	NA	NA	3.28E-01	4.10E-01	NA
rs41515846	RP11-481J2.2	1.92E-05	1.04E-04	NA	NA	4.61E-02	3.11E-02	NA	NA	NA	NA	NA
rs116654103	RP11-356O24.1-RNA5SP428	2.99E-05	1.82E-05	NA	NA	NA	NA	NA	NA	9.27E-02	7.98E-02	NA
rs150538526	RP11-356O24.1-RNA5SP428	2.86E-05	1.68E-05	NA	NA	NA	NA	NA	NA	9.35E-02	7.99E-02	NA
rs8109054	SULT2B1	6.20E-01	4.21E-01	5.74E-04	1.11E-03	4.46E-01	4.38E-01	9.80E-03	9.97E-02	3.59E-01	6.56E-01	1.00E-01
rs8108904	SULT2B1	6.97E-01	4.89E-01	5.22E-04	1.02E-03	4.50E-01	4.37E-01	9.89E-03	1.05E-01	3.43E-01	6.40E-01	1.03E-01
rs35747850	SULT2B1	7.42E-01	5.07E-01	4.16E-04	8.54E-04	4.97E-01	4.76E-01	1.03E-02	1.17E-01	3.23E-01	6.35E-01	8.75E-02
chr19:49083629:D	SULT2B1	9.69E-01	5.85E-01	7.98E-04	2.46E-03	3.32E-01	3.79E-01	7.41E-03	1.06E-01	1.47E-01	3.94E-01	5.32E-02
rs11878647	SULT2B1	7.98E-01	3.13E-01	2.44E-04	6.87E-04	3.53E-01	3.80E-01	8.64E-03	1.40E-01	3.61E-01	6.94E-01	5.59E-02
rs11878722	SULT2B1	8.41E-01	3.43E-01	1.64E-04	5.15E-04	3.11E-01	3.32E-01	8.94E-03	1.36E-01	2.95E-01	6.29E-01	5.40E-02
rs61416619	SULT2B1	9.54E-01	5.84E-01	1.60E-04	3.50E-04	8.05E-01	7.26E-01	9.46E-03	1.75E-01	2.40E-01	4.75E-01	5.63E-02
chr19:49087071:D	SULT2B1	7.80E-01	6.65E-01	1.98E-03	2.92E-03	7.63E-01	2.20E-01	3.53E-03	7.54E-02	9.23E-01	8.63E-01	7.87E-02
rs73053552	SULT2B1	2.31E-01	9.73E-02	1.47E-04	3.27E-04	1.27E-01	1.67E-01	1.46E-02	2.17E-01	6.79E-02	1.62E-01	4.32E-02
rs73053558	SULT2B1	8.11E-02	2.25E-02	1.18E-04	4.07E-04	2.06E-01	1.72E-01	1.34E-02	2.11E-01	7.32E-02	1.34E-01	3.12E-02

chr19:50860233:D	NAPSA,NR1H2	1.89E-01	2.27E-01	1.35E-03	7.60E-04	3.19E-02	2.90E-01	1.66E-03	4.44E-03	9.85E-01	8.11E-01	2.81E-01
rs2695121	NR1H2	6.50E-01	3.67E-01	2.98E-03	2.00E-03	8.47E-01	6.46E-01	6.34E-04	4.54E-03	6.00E-01	6.92E-01	2.03E-01
rs2248949	NR1H2	2.48E-01	2.38E-01	2.26E-03	1.49E-03	6.77E-01	6.74E-01	9.93E-04	6.99E-03	4.56E-01	5.79E-01	2.00E-01
rs6037613	ATRN	3.42E-03	5.57E-03	NA	NA	1.11E-01	8.00E-01	NA	NA	2.04E-04	1.40E-03	NA
rs6115932	ATRN	3.42E-03	5.58E-03	NA	NA	1.12E-01	8.06E-01	NA	NA	2.09E-04	1.42E-03	NA
rs7343859	ATRN	3.42E-03	5.59E-03	NA	NA	1.12E-01	8.06E-01	NA	NA	2.09E-04	1.42E-03	NA
rs6051913	ATRN	3.41E-03	5.60E-03	NA	NA	1.13E-01	8.06E-01	NA	NA	2.10E-04	1.42E-03	NA
rs6051919	ATRN	3.63E-03	5.70E-03	NA	NA	9.81E-02	7.23E-01	NA	NA	1.71E-04	1.45E-03	NA
rs6107305	ATRN	2.83E-03	4.94E-03	NA	NA	1.01E-01	7.28E-01	NA	NA	1.81E-04	1.57E-03	NA
rs6131652	MACROD2	8.94E-01	8.76E-01	8.86E-02	5.50E-02	2.99E-01	9.76E-01	1.05E-06	8.99E-06	5.85E-01	5.97E-01	3.70E-01
rs28650065	OVOL2	2.13E-02	4.08E-03	1.72E-03	5.25E-02	3.37E-01	3.97E-01	6.58E-02	1.38E-02	8.54E-01	8.35E-01	4.30E-02
chr20:21706604:I	PAX1-SLC25A6P1	6.24E-04	1.07E-03	NA	NA	7.07E-04	5.01E-03	NA	NA	1.89E-01	5.46E-01	NA
rs114269992	RP5-860P4.2-CST7	1.06E-01	3.98E-02	NA	NA	2.13E-07	1.63E-07	NA	NA	7.28E-01	9.55E-01	NA
rs114620529	RP5-860P4.2-CST7	1.11E-01	4.18E-02	NA	NA	2.15E-07	1.61E-07	NA	NA	7.40E-01	9.34E-01	NA
rs116629084	RP5-860P4.2-CST7	1.16E-01	4.10E-02	NA	NA	1.70E-07	1.27E-07	NA	NA	7.42E-01	8.99E-01	NA
rs115384512	RP5-860P4.2-CST7	8.91E-02	2.61E-02	NA	NA	8.91E-08	7.19E-08	NA	NA	7.18E-01	9.63E-01	NA
rs147641662	CST7,RP5-860P4.2-CST7	8.88E-02	2.59E-02	NA	NA	8.87E-08	7.13E-08	NA	NA	7.18E-01	9.64E-01	NA
rs191783144	CST7,RP5-860P4.2-CST7	8.85E-02	2.58E-02	NA	NA	8.81E-08	7.07E-08	NA	NA	7.18E-01	9.64E-01	NA
rs146806338	CST7,RP5-860P4.2-CST7	8.85E-02	2.58E-02	NA	NA	8.80E-08	7.03E-08	NA	NA	7.18E-01	9.64E-01	NA
rs114828727	CST7,APMAP,CST7-APMAP	9.23E-02	2.65E-02	NA	NA	9.01E-08	6.92E-08	NA	NA	7.16E-01	9.68E-01	NA
rs114128002	APMAP	9.79E-02	2.68E-02	NA	NA	8.06E-08	6.33E-08	NA	NA	6.27E-01	8.54E-01	NA
rs115342711	RNU6-1257P,APMAP	1.08E-01	3.55E-02	NA	NA	2.54E-07	1.15E-07	NA	NA	5.73E-01	9.16E-01	NA
chr20:24955422:I	RNU6-1257P,APMAP	1.08E-01	3.55E-02	NA	NA	2.54E-07	1.15E-07	NA	NA	5.72E-01	9.13E-01	NA
rs115764440	APMAP	1.09E-01	3.58E-02	NA	NA	2.33E-07	9.03E-08	NA	NA	5.68E-01	9.08E-01	NA
rs116068335	APMAP-ACSS1	1.28E-01	3.80E-02	NA	NA	1.66E-07	5.62E-08	NA	NA	3.06E-01	5.37E-01	NA
rs114637142	ACSS1,APMAP-ACSS1	1.24E-01	2.98E-02	NA	NA	9.15E-08	7.49E-08	NA	NA	4.96E-01	6.46E-01	NA
rs114071901	ACSS1	1.40E-01	3.48E-02	NA	NA	1.06E-07	9.71E-08	NA	NA	4.94E-01	6.39E-01	NA
rs113232742	ACSS1	1.53E-01	3.94E-02	NA	NA	8.82E-08	8.36E-08	NA	NA	4.93E-01	6.36E-01	NA
rs114199928	ACSS1	1.57E-01	4.06E-02	NA	NA	8.42E-08	8.06E-08	NA	NA	4.93E-01	6.36E-01	NA
rs114836364	ACSS1	1.62E-01	4.24E-02	NA	NA	8.23E-08	7.97E-08	NA	NA	4.92E-01	6.34E-01	NA
rs116669368	ACSS1	1.26E-01	4.37E-02	NA	NA	5.08E-08	6.02E-08	NA	NA	6.91E-01	8.59E-01	NA
rs145379934	ACSS1	1.63E-01	8.55E-02	NA	NA	3.96E-08	5.64E-08	NA	NA	6.96E-01	8.68E-01	NA
rs6022230	TSHZ2	9.97E-03	3.43E-02	5.26E-01	3.90E-01	5.21E-03	2.53E-03	2.09E-01	5.13E-01	4.29E-03	5.04E-03	4.94E-01
rs6013609	TSHZ2	1.07E-02	3.83E-02	4.72E-01	3.49E-01	4.96E-03	2.33E-03	1.78E-01	4.70E-01	1.01E-03	9.76E-04	3.91E-01
rs6022233	TSHZ2	9.81E-03	3.80E-02	5.00E-01	3.73E-01	3.76E-03	1.97E-03	1.84E-01	4.92E-01	1.01E-03	9.66E-04	3.99E-01
rs964886	TSHZ2	5.49E-03	2.30E-02	4.99E-01	3.77E-01	3.88E-03	1.95E-03	1.81E-01	5.03E-01	1.36E-03	1.14E-03	3.82E-01
rs6022236	TSHZ2	1.54E-02	5.78E-02	4.65E-01	3.32E-01	4.42E-03	2.17E-03	1.73E-01	4.92E-01	1.26E-03	1.06E-03	3.57E-01
rs6022237	TSHZ2	2.91E-03	3.99E-02	4.76E-01	3.74E-01	3.00E-02	1.55E-02	1.93E-01	5.23E-01	6.70E-04	3.54E-04	3.83E-01
rs6014553	RP5-1010E17.1-CBLN4	8.81E-05	6.44E-05	8.13E-01	9.91E-01	2.38E-01	7.31E-01	7.77E-02	7.45E-01	2.08E-02	2.40E-02	2.33E-01
rs6014555	RP5-1010E17.1-CBLN4	1.56E-04	7.69E-05	8.68E-01	9.48E-01	6.19E-02	2.72E-01	4.89E-02	6.52E-01	8.71E-02	8.54E-02	3.80E-01
rs2427339	ρ5-908M14.5,RP5-908M14.5-GAT	1.11E-03	2.99E-04	7.33E-01	9.74E-01	3.07E-03	4.20E-02	4.71E-01	6.99E-01	1.50E-01	7.22E-01	5.07E-01
rs78068107	ρP000473.8,AP000473.8-RNU1-98	3.98E-05	2.69E-04	NA	NA	5.36E-02	1.52E-02	NA	NA	2.21E-01	1.20E-01	NA
rs78108129	AP000473.8-RNU1-98P	1.28E-04	6.71E-04	NA	NA	9.46E-03	2.38E-03	NA	NA	4.45E-01	2.36E-01	NA
rs2833695	LINC00159	1.77E-04	3.60E-03	6.26E-01	3.70E-01	4.73E-02	1.23E-01	1.90E-01	3.54E-01	1.15E-01	2.25E-01	2.49E-01
rs2833696	LINC00159	1.18E-04	6.59E-04	4.03E-01	2.53E-01	2.93E-02	2.90E-02	2.58E-01	4.87E-01	1.09E-02	5.44E-02	4.14E-01
rs2833702	LINC00159	1.99E-04	4.26E-04	8.02E-02	1.80E-02	5.47E-02	2.44E-02	1.14E-01	1.19E-01	7.65E-02	4.01E-01	6.02E-01

rs2833703	LINC00159	4.45E-04	6.89E-04	6.50E-02	2.11E-02	5.26E-02	2.31E-02	8.29E-02	8.06E-02	3.53E-02	1.57E-01	5.41E-01
rs11088207	LINC00159	4.34E-04	6.83E-04	6.52E-02	2.11E-02	5.07E-02	2.21E-02	8.18E-02	7.86E-02	3.58E-02	1.58E-01	5.44E-01
rs2833704	LINC00159	4.18E-04	6.76E-04	6.55E-02	2.10E-02	4.82E-02	2.09E-02	8.03E-02	7.58E-02	3.65E-02	1.61E-01	5.47E-01
rs11088208	LINC00159	4.10E-04	6.73E-04	6.56E-02	2.10E-02	4.68E-02	2.01E-02	7.94E-02	7.41E-02	3.69E-02	1.62E-01	5.48E-01
rs12483370	LINC00159	3.77E-04	6.30E-04	6.65E-02	2.12E-02	4.48E-02	1.91E-02	7.78E-02	7.19E-02	3.76E-02	1.65E-01	5.48E-01
rs2833705	LINC00159	4.62E-04	6.99E-04	6.88E-02	2.26E-02	5.68E-02	2.48E-02	1.03E-01	7.76E-02	3.15E-02	1.40E-01	5.25E-01
rs12483543	LINC00159	3.02E-04	5.96E-04	5.90E-02	1.94E-02	3.58E-02	1.44E-02	8.67E-02	6.99E-02	3.50E-02	1.47E-01	5.90E-01
rs11088209	LINC00159	3.75E-04	6.48E-04	6.39E-02	2.12E-02	3.70E-02	1.41E-02	8.16E-02	6.93E-02	3.44E-02	1.45E-01	5.82E-01
rs11088210	LINC00159	3.74E-04	6.48E-04	6.39E-02	2.12E-02	3.68E-02	1.40E-02	8.15E-02	6.91E-02	3.45E-02	1.45E-01	5.83E-01
rs11088211	LINC00159	3.72E-04	6.47E-04	6.40E-02	2.12E-02	3.66E-02	1.39E-02	8.13E-02	6.87E-02	3.46E-02	1.45E-01	5.83E-01
rs2833707	LINC00159	3.56E-04	6.40E-04	6.47E-02	2.13E-02	3.45E-02	1.30E-02	7.95E-02	6.58E-02	3.55E-02	1.48E-01	5.89E-01
rs2833708	LINC00159	3.48E-04	6.37E-04	6.50E-02	2.13E-02	3.34E-02	1.25E-02	7.85E-02	6.42E-02	3.59E-02	1.49E-01	5.91E-01
rs2833709	LINC00159	3.45E-04	6.36E-04	6.52E-02	2.14E-02	3.29E-02	1.23E-02	7.81E-02	6.35E-02	3.62E-02	1.50E-01	5.92E-01
rs12482617	LINC00159	3.44E-04	6.36E-04	6.53E-02	2.14E-02	3.29E-02	1.22E-02	7.80E-02	6.34E-02	3.62E-02	1.50E-01	5.92E-01
rs12482514	LINC00159	3.44E-04	6.36E-04	6.53E-02	2.14E-02	3.29E-02	1.22E-02	7.80E-02	6.34E-02	3.62E-02	1.50E-01	5.92E-01
rs2833713	LINC00159	3.44E-04	6.35E-04	6.53E-02	2.14E-02	3.28E-02	1.22E-02	7.80E-02	6.33E-02	3.63E-02	1.51E-01	5.92E-01
rs77148260	LINC00159	3.43E-04	6.35E-04	6.53E-02	2.14E-02	3.28E-02	1.22E-02	7.78E-02	6.31E-02	3.63E-02	1.51E-01	5.92E-01
rs113442259	LINC00159	3.43E-04	6.35E-04	6.53E-02	2.14E-02	3.28E-02	1.22E-02	7.78E-02	6.31E-02	3.63E-02	1.51E-01	5.92E-01
rs113213508	LINC00159	3.43E-04	6.35E-04	6.53E-02	2.14E-02	3.27E-02	1.22E-02	7.78E-02	6.31E-02	3.64E-02	1.51E-01	5.92E-01
rs112075059	LINC00159	6.11E-04	1.15E-03	3.76E-02	1.21E-02	2.80E-02	8.74E-03	5.44E-02	4.86E-02	1.58E-02	1.01E-01	5.36E-01
rs12483027	LINC00159	3.43E-04	6.35E-04	6.53E-02	2.14E-02	3.27E-02	1.22E-02	7.78E-02	6.31E-02	3.64E-02	1.51E-01	5.92E-01
rs12483069	LINC00159	3.43E-04	6.35E-04	6.53E-02	2.14E-02	3.27E-02	1.22E-02	7.78E-02	6.30E-02	3.64E-02	1.51E-01	5.92E-01
rs2833714	LINC00159	3.42E-04	6.35E-04	6.53E-02	2.14E-02	3.26E-02	1.21E-02	7.77E-02	6.30E-02	3.64E-02	1.51E-01	5.92E-01
rs78098177	LINC00159	3.42E-04	6.35E-04	6.54E-02	2.14E-02	3.25E-02	1.21E-02	7.76E-02	6.27E-02	3.64E-02	1.51E-01	5.93E-01
rs2833718	LINC00159	3.37E-04	6.33E-04	7.16E-02	2.32E-02	3.18E-02	1.14E-02	7.69E-02	6.17E-02	3.67E-02	1.52E-01	5.94E-01
rs8128985	LINC00159	3.38E-04	6.34E-04	6.55E-02	2.14E-02	3.18E-02	1.18E-02	7.68E-02	6.17E-02	3.68E-02	1.52E-01	5.94E-01
rs78794822	LINC00159	3.47E-04	6.42E-04	6.34E-02	2.14E-02	3.07E-02	1.14E-02	7.66E-02	6.16E-02	3.76E-02	1.55E-01	5.98E-01
rs112412785	LINC00159	4.69E-04	1.11E-03	6.60E-02	2.00E-02	6.28E-02	2.20E-02	7.64E-02	6.15E-02	2.94E-02	1.43E-01	5.36E-01
rs113561184	LINC00159	2.07E-04	5.30E-04	3.79E-02	1.16E-02	4.01E-02	1.01E-02	5.27E-02	3.75E-02	2.21E-02	1.09E-01	5.61E-01
rs117578633	LINC00159	2.56E-04	5.82E-04	4.78E-02	1.57E-02	4.05E-02	1.04E-02	6.05E-02	4.57E-02	2.71E-02	1.21E-01	5.75E-01
rs111282827	LINC00159	4.09E-04	1.11E-03	5.43E-02	1.57E-02	5.38E-02	1.93E-02	4.08E-02	4.26E-02	3.21E-02	1.54E-01	5.95E-01
rs79779898	LINC00159	4.72E-04	1.11E-03	6.54E-02	2.00E-02	6.24E-02	2.19E-02	7.63E-02	6.15E-02	2.97E-02	1.44E-01	5.38E-01
chr21:33569654:D	LINC00159	4.62E-04	9.13E-04	7.62E-02	2.16E-02	6.34E-02	2.30E-02	1.00E-01	1.02E-01	2.79E-02	1.50E-01	6.60E-01
rs2249432	LINC00159-AP000265.1	1.06E-05	4.15E-05	6.94E-02	1.72E-02	2.42E-01	2.10E-01	2.66E-01	1.55E-01	1.80E-01	3.93E-01	5.12E-01
rs8131083	LINC00159-AP000265.1	1.12E-05	4.24E-05	7.42E-02	1.87E-02	2.41E-01	2.13E-01	2.68E-01	1.54E-01	1.76E-01	3.76E-01	4.95E-01
rs16989309	URB1	4.53E-03	3.56E-02	6.30E-03	2.50E-03	4.60E-01	7.62E-01	1.12E-01	2.00E-01	3.63E-01	2.34E-01	5.05E-02
rs111414152	DIP2A	2.01E-04	2.87E-03	NA	NA	1.92E-05	7.58E-04	NA	NA	7.88E-01	8.92E-01	NA
rs116214529	DIP2A-S100B	7.95E-05	3.31E-03	NA	NA	7.71E-05	1.31E-03	NA	NA	4.69E-01	9.39E-01	NA
rs186825689	DIP2A-S100B	7.87E-05	3.28E-03	NA	NA	7.71E-05	1.31E-03	NA	NA	4.69E-01	9.40E-01	NA
rs115728891	S100B,S100B-PRMT2	1.11E-04	3.70E-03	NA	NA	1.37E-03	1.86E-02	NA	NA	4.77E-01	9.53E-01	NA
rs115266927	S100B,S100B-PRMT2	1.51E-04	4.68E-03	NA	NA	1.37E-03	1.86E-02	NA	NA	4.78E-01	9.59E-01	NA
rs79229123	S100B,S100B-PRMT2	1.58E-04	4.87E-03	NA	NA	1.37E-03	1.86E-02	NA	NA	4.77E-01	9.60E-01	NA
rs185614941	S100B-PRMT2	1.46E-04	4.68E-03	NA	NA	1.42E-03	1.94E-02	NA	NA	4.75E-01	9.64E-01	NA
chr22:26917069:	C9.15,TPST2,CTA-445C9.14-CTA-4	NA	NA	1.28E-01	5.92E-02	NA	NA	3.15E-10	6.55E-05	5.95E-02	4.35E-01	7.69E-01
rs4149485	TPST2,CTA-445C9.15	2.45E-01	1.26E-01	4.82E-02	2.66E-02	2.21E-01	1.55E-01	2.24E-10	6.00E-05	5.03E-01	6.87E-01	2.59E-01

EA	Meta						Dir ^d	SNP
	AA	EA	AA+EA	EA	AA+EA	AA+EA		
Adj P	Exp P	Adj P	Exp P	Adj P	Exp P	Adj P		
9.16E-01	8.06E-06	1.31E-03	8.88E-01	1.31E-03	6.77E-03	1.31E-03	----++	rs10782635
9.16E-01	8.03E-06	1.30E-03	8.89E-01	1.30E-03	6.76E-03	1.30E-03	----+-	rs10873920
1.63E-01	9.82E-06	2.68E-03	NA	2.68E-03	1.08E-05	2.68E-03	+x+x-x	chr1:212183114:!
2.25E-01	9.69E-07	2.13E-04	NA	2.13E-04	1.09E-06	2.13E-04	+x+x-x	rs141482228
1.86E-01	2.50E-06	1.33E-03	NA	1.33E-03	2.77E-06	1.33E-03	+x+x+x	rs77349458
6.04E-02	8.29E-06	6.30E-04	NA	6.30E-04	9.12E-06	6.30E-04	+x+xxx	rs78450308
NA	7.17E-06	1.51E-05	NA	1.51E-05	7.90E-06	1.51E-05	+x+x+x	rs147434712
NA	2.25E-06	6.24E-05	NA	6.24E-05	2.50E-06	6.24E-05	+x+xxx	rs114383460
NA	2.25E-06	6.26E-05	NA	6.26E-05	2.51E-06	6.26E-05	+x+xxx	rs115913953
NA	2.32E-06	6.45E-05	NA	6.45E-05	2.58E-06	6.45E-05	+x+xxx	rs115427433
7.36E-01	6.21E-06	3.28E-02	4.77E-01	3.28E-02	8.45E-03	3.28E-02	-+---	rs73930448
NA	1.70E-06	2.48E-04	NA	2.48E-04	1.90E-06	2.48E-04	+x+xxx	rs77448142
4.40E-01	7.44E-01	1.20E-03	6.41E-06	1.20E-03	6.99E-04	1.20E-03	+++++	rs192238154
6.07E-01	9.70E-01	4.67E-03	5.43E-06	4.67E-03	1.88E-03	4.67E-03	+++++	rs74261103
6.22E-01	6.72E-01	2.43E-03	6.48E-06	2.43E-03	7.50E-04	2.43E-03	+++++	rs13386612
6.18E-01	6.63E-01	2.32E-03	6.21E-06	2.32E-03	7.08E-04	2.32E-03	+++++	rs10181488
5.01E-01	9.54E-01	3.73E-03	6.55E-06	3.73E-03	2.30E-03	3.73E-03	+++++	rs1487036
4.35E-01	8.21E-01	5.67E-03	5.90E-06	5.67E-03	2.78E-03	5.67E-03	+++++	rs2129493
4.52E-01	7.99E-01	9.25E-03	8.84E-06	9.25E-03	3.71E-03	9.25E-03	+++++	rs1872786
4.77E-01	7.69E-01	9.46E-03	7.97E-06	9.46E-03	3.81E-03	9.46E-03	+++++	rs1872787
4.83E-01	7.90E-01	1.01E-02	7.97E-06	1.01E-02	3.90E-03	1.01E-02	+++++	rs12617011
9.28E-01	6.74E-01	5.49E-03	2.63E-06	5.49E-03	3.90E-04	5.49E-03	++++-	rs12621150
8.00E-01	8.97E-01	1.16E-02	9.08E-06	1.16E-02	5.77E-03	1.16E-02	++++-	rs2901857
7.94E-01	8.89E-01	1.15E-02	8.67E-06	1.15E-02	5.76E-03	1.15E-02	++++-	rs1979560
NA	1.43E-06	2.01E-06	NA	2.01E-06	1.60E-06	2.01E-06	+x+x+x	rs144605126
NA	7.31E-06	1.08E-05	NA	1.08E-05	8.05E-06	1.08E-05	+x+x+x	rs115750691
NA	2.52E-06	8.71E-05	NA	8.71E-05	2.80E-06	8.71E-05	+x+x+x	rs75966817
NA	2.35E-07	3.05E-06	NA	3.05E-06	2.67E-07	3.05E-06	+x+x+x	rs77627012
NA	2.00E-07	2.44E-06	NA	2.44E-06	2.27E-07	2.44E-06	+x+x+x	rs113582837
NA	1.33E-07	1.67E-06	NA	1.67E-06	1.52E-07	1.67E-06	+x+x+x	rs115195999
NA	1.91E-06	2.54E-05	NA	2.54E-05	2.13E-06	2.54E-05	+x+x+x	rs74950612
NA	1.95E-07	2.81E-06	NA	2.81E-06	2.22E-07	2.81E-06	+x+x+x	rs76850313
NA	4.71E-06	1.13E-04	NA	1.13E-04	5.21E-06	1.13E-04	+x+xxx	rs115645716
NA	9.65E-07	2.86E-05	NA	2.86E-05	1.08E-06	2.86E-05	+x+xxx	rs138518560
NA	3.18E-06	8.52E-05	NA	8.52E-05	3.53E-06	8.52E-05	+x+x+x	rs116479873
NA	3.06E-06	1.10E-04	NA	1.10E-04	3.39E-06	1.10E-04	+x+x+x	rs150064803
NA	9.56E-06	8.66E-05	NA	8.66E-05	1.05E-05	8.66E-05	+x+x+x	rs116622675
NA	9.06E-06	4.14E-04	NA	4.14E-04	9.96E-06	4.14E-04	+x+x+x	rs73947458
NA	5.97E-06	2.89E-04	NA	2.89E-04	6.58E-06	2.89E-04	+x+xxx	rs57275972
NA	1.51E-07	1.99E-05	NA	1.99E-05	1.72E-07	1.99E-05	+x+xxx	rs143020225
NA	3.00E-06	1.20E-04	NA	1.20E-04	3.33E-06	1.20E-04	+x+xxx	rs112945476
NA	2.84E-06	1.12E-04	NA	1.12E-04	3.15E-06	1.12E-04	+x+xxx	rs111415017
NA	2.44E-06	1.06E-04	NA	1.06E-04	2.72E-06	1.06E-04	+x+xxx	rs113283978

NA	2.86E-06	1.15E-04	NA	1.15E-04	3.18E-06	1.15E-04	+x+xx	chr2:167235049:D
NA	2.81E-06	1.13E-04	NA	1.13E-04	3.12E-06	1.13E-04	+x+xx	rs112047299
NA	3.56E-07	2.74E-05	NA	2.74E-05	4.03E-07	2.74E-05	+x+xx	chr2:167239818:D
NA	3.04E-06	1.26E-04	NA	1.26E-04	3.38E-06	1.26E-04	+x+xx	rs57862846
NA	3.27E-06	1.38E-04	NA	1.38E-04	3.63E-06	1.38E-04	+x+xx	rs75884187
NA	3.26E-06	1.39E-04	NA	1.39E-04	3.61E-06	1.39E-04	+x+xx	rs6432911
7.65E-02	3.82E-01	1.16E-02	9.47E-06	1.16E-02	3.85E-03	1.16E-02	+--++	rs16856071
7.13E-01	NA	4.50E-04	6.52E-06	4.50E-04	7.55E-06	4.50E-04	x+x+xx	rs77921320
NA	9.25E-06	1.29E-03	NA	1.29E-03	1.02E-05	1.29E-03	+x+xx	rs74002562
2.72E-01	2.00E-03	1.26E-03	1.31E-03	1.26E-03	9.82E-06	1.26E-03	+++++	rs4684628
NA	7.39E-07	5.96E-08	NA	5.96E-08	8.30E-07	5.96E-08	xx+x+x	rs150728868
6.19E-01	8.37E-06	2.03E-03	3.80E-01	2.03E-03	1.06E-02	2.03E-03	x+++++	rs80329973
2.26E-01	5.50E-06	2.70E-02	2.02E-01	2.70E-02	2.88E-02	2.70E-02	+----+	rs811810
4.34E-01	7.75E-06	3.34E-02	1.63E-01	3.34E-02	3.99E-02	3.34E-02	+--++	rs774804
2.68E-01	5.64E-06	2.64E-02	1.95E-01	2.64E-02	3.03E-02	2.64E-02	+----+	rs774805
2.28E-01	8.24E-06	2.91E-02	2.06E-01	2.91E-02	3.28E-02	2.91E-02	+----+	rs2622700
NA	1.13E-08	1.05E-06	NA	1.05E-06	1.32E-08	1.05E-06	+x+x+x	rs143244591
NA	5.38E-06	2.98E-06	NA	2.98E-06	5.94E-06	2.98E-06	-x-xxx	rs139793347
4.91E-04	6.32E-01	1.07E-03	6.02E-06	1.07E-03	2.59E-03	1.07E-03	+++++	rs4912498
5.16E-01	4.81E-01	1.54E-03	5.36E-07	1.54E-03	4.92E-06	1.54E-03	+----	rs10939037
5.11E-01	4.85E-01	1.53E-03	7.65E-07	1.53E-03	6.50E-06	1.53E-03	+----	rs10939038
5.34E-01	4.36E-02	4.66E-03	5.14E-05	4.66E-03	7.01E-06	4.66E-03	+++++	rs73252531
7.22E-01	4.92E-01	1.06E-02	4.97E-06	1.06E-02	1.07E-04	1.06E-02	+----	rs11937742
3.89E-01	9.97E-01	2.26E-02	9.84E-06	2.26E-02	2.47E-04	2.26E-02	+----	chr4:25163774:I
3.06E-01	9.42E-01	2.31E-02	6.61E-06	2.31E-02	2.28E-04	2.31E-02	+----	chr4:25163777:I
3.94E-01	NA	5.69E-04	7.91E-07	5.69E-04	9.41E-07	5.69E-04	x+x+x+	rs73252534
7.13E-01	4.95E-01	1.06E-02	4.66E-06	1.06E-02	1.04E-04	1.06E-02	+----	rs12498160
3.95E-01	NA	5.61E-04	7.89E-07	5.61E-04	9.39E-07	5.61E-04	x+x+x+	rs73252535
3.96E-01	NA	5.40E-04	7.68E-07	5.40E-04	9.15E-07	5.40E-04	x+x+x+	rs73252537
3.87E-01	NA	4.96E-04	6.85E-07	4.96E-04	8.17E-07	4.96E-04	x+x+x+	rs73252538
4.30E-01	NA	6.85E-04	1.62E-06	6.85E-04	1.90E-06	6.85E-04	x+x+x+	rs73252540
5.28E-01	1.15E-03	7.61E-05	4.40E-06	7.61E-05	2.98E-08	7.61E-05	+++++	rs147170184
5.29E-01	3.00E-02	3.50E-04	4.42E-06	3.50E-04	4.69E-07	3.50E-04	+++++	rs147364487
3.41E-01	NA	8.72E-04	2.12E-06	8.72E-04	2.49E-06	8.72E-04	x+x+x+	rs73252544
5.26E-01	1.85E-03	7.28E-05	4.49E-06	7.28E-05	4.39E-08	7.28E-05	+++++	rs141771882
5.28E-01	1.36E-03	8.81E-05	4.77E-06	8.81E-05	3.65E-08	8.81E-05	+++++	rs115472754
5.29E-01	2.02E-03	9.46E-05	4.93E-06	9.46E-05	5.13E-08	9.46E-05	+++++	rs115579188
5.29E-01	1.25E-03	8.74E-05	4.94E-06	8.74E-05	3.57E-08	8.74E-05	+++++	rs73252547
5.30E-01	1.26E-03	8.87E-05	5.00E-06	8.87E-05	3.64E-08	8.87E-05	+++++	rs55974734
5.30E-01	1.27E-03	8.89E-05	5.00E-06	8.89E-05	3.64E-08	8.89E-05	+++++	rs73252548
5.30E-01	1.27E-03	8.98E-05	5.05E-06	8.98E-05	3.69E-08	8.98E-05	+++++	chr4:25198751:D
3.42E-01	NA	9.34E-04	2.34E-06	9.34E-04	2.74E-06	9.34E-04	x+x+x+	rs73252549
3.42E-01	NA	9.38E-04	2.35E-06	9.38E-04	2.75E-06	9.38E-04	x+x+x+	rs73252550
3.42E-01	NA	9.48E-04	2.38E-06	9.48E-04	2.80E-06	9.48E-04	x+x+x+	rs73252551
5.30E-01	1.08E-03	9.11E-05	5.28E-06	9.11E-05	3.37E-08	9.11E-05	+++++	rs73252553
5.30E-01	1.08E-03	9.33E-05	5.43E-06	9.33E-05	3.46E-08	9.33E-05	+++++	chr4:25202768:I

5.31E-01	1.06E-03	9.61E-05	5.67E-06	9.61E-05	3.56E-08	9.61E-05	+++++	rs73252554
5.83E-01	1.78E-03	1.85E-04	8.38E-06	1.85E-04	8.18E-08	1.85E-04	+++++	rs73252555
3.85E-01	NA	1.37E-03	3.92E-06	1.37E-03	4.57E-06	1.37E-03	x+x+x+	rs73252556
5.84E-01	1.78E-03	1.86E-04	8.40E-06	1.86E-04	8.20E-08	1.86E-04	+++++	rs55638051
5.84E-01	1.79E-03	1.87E-04	8.44E-06	1.87E-04	8.27E-08	1.87E-04	+++++	rs73252557
5.83E-01	1.75E-03	2.01E-04	9.45E-06	2.01E-04	9.09E-08	2.01E-04	+++++	rs424573
5.84E-01	1.74E-03	2.02E-04	9.56E-06	2.02E-04	9.20E-08	2.02E-04	+++++	rs409131
5.84E-01	1.74E-03	2.16E-04	1.05E-05	2.16E-04	1.01E-07	2.16E-04	+++++	rs313574
8.38E-01	7.04E-03	1.07E-03	1.69E-04	1.07E-03	4.48E-06	1.07E-03	+++++	rs313573
5.84E-01	1.69E-03	2.19E-04	1.07E-05	2.19E-04	1.00E-07	2.19E-04	+++++	rs313570
5.94E-01	5.21E-03	4.07E-04	1.08E-05	4.07E-04	2.26E-07	4.07E-04	+++++	rs313569
5.80E-01	1.94E-03	2.24E-04	1.05E-05	2.24E-04	1.09E-07	2.24E-04	+++++	rs313579
9.12E-01	1.38E-03	5.61E-04	1.88E-04	5.61E-04	1.15E-06	5.61E-04	+++++	rs313578
9.16E-01	1.08E-03	4.41E-04	1.89E-04	4.41E-04	9.40E-07	4.41E-04	+++++	rs313576
3.87E-01	NA	1.63E-03	5.54E-06	1.63E-03	6.43E-06	1.63E-03	x+x+x+	rs313575
4.61E-01	1.02E-02	2.48E-04	3.56E-06	2.48E-04	3.03E-07	2.48E-04	+++++	rs3115231
5.86E-01	9.85E-04	1.76E-04	1.17E-05	1.76E-04	7.29E-08	1.76E-04	+++++	rs188759
7.12E-01	2.73E-04	1.01E-04	1.29E-04	1.01E-04	1.58E-07	1.01E-04	+++++	rs313547
6.64E-01	9.76E-04	1.00E-04	2.47E-05	1.00E-04	1.04E-07	1.00E-04	+++++	rs313544
6.67E-01	1.07E-03	1.08E-04	2.45E-05	1.08E-04	1.13E-07	1.08E-04	+++++	rs313553
3.87E-01	NA	2.09E-03	7.55E-06	2.09E-03	8.72E-06	2.09E-03	x+x+x+	rs183170687
5.95E-01	1.06E-02	3.29E-04	2.36E-05	3.29E-04	9.95E-07	3.29E-04	+++++	rs313560
2.72E-01	3.43E-01	1.70E-03	4.36E-06	1.70E-03	6.44E-06	1.70E-03	+++++	rs313566
5.56E-01	9.39E-04	2.21E-04	1.56E-05	2.21E-04	9.55E-08	2.21E-04	+++++	rs313536
5.13E-02	NA	1.40E-04	6.46E-08	1.40E-04	7.96E-08	1.40E-04	x-x+x+	rs313542
3.55E-01	NA	1.74E-03	7.59E-06	1.74E-03	8.77E-06	1.74E-03	x+x+x+	rs313540
5.45E-01	1.23E-03	2.28E-04	1.42E-05	2.28E-04	1.05E-07	2.28E-04	+++++	rs313539
5.45E-01	1.26E-03	2.31E-04	1.42E-05	2.31E-04	1.08E-07	2.31E-04	+++++	rs313538
5.44E-01	2.42E-03	3.49E-04	1.72E-05	3.49E-04	2.18E-07	3.49E-04	+++++	rs3115232
4.29E-01	6.90E-02	3.36E-03	1.59E-05	3.36E-03	3.28E-06	3.36E-03	++++x+	rs180854188
5.44E-01	1.52E-03	2.73E-04	1.58E-05	2.73E-04	1.39E-07	2.73E-04	+++++	rs313533
3.92E-01	7.62E-05	6.59E-04	7.15E-04	6.59E-04	7.59E-07	6.59E-04	+--x-	rs12511593
6.56E-01	1.23E-04	9.02E-05	6.21E-05	9.02E-05	8.44E-08	9.02E-05	---x-	rs7689780
3.67E-01	NA	2.11E-03	9.70E-06	2.11E-03	1.12E-05	2.11E-03	x-x-x-	rs10433834
3.67E-01	NA	2.13E-03	9.52E-06	2.13E-03	1.10E-05	2.13E-03	x-x-x-	rs1818426
3.67E-01	NA	2.12E-03	9.70E-06	2.12E-03	1.12E-05	2.12E-03	x-x-x-	rs9884670
2.72E-01	1.44E-01	2.24E-03	9.09E-06	2.24E-03	3.56E-06	2.24E-03	x----	chr4:25289189:l
3.79E-01	NA	2.10E-03	9.29E-06	2.10E-03	1.07E-05	2.10E-03	x-x-x-	rs4697558
4.68E-01	2.85E-01	4.87E-03	6.11E-06	4.87E-03	9.10E-05	4.87E-03	----+	rs316804
6.17E-01	6.56E-03	1.87E-03	1.79E-04	1.87E-03	4.36E-06	1.87E-03	-----	rs316776
6.14E-01	6.53E-03	1.73E-03	1.67E-04	1.73E-03	4.09E-06	1.73E-03	-----	rs316777
4.68E-01	6.10E-03	1.59E-03	1.66E-04	1.59E-03	3.78E-06	1.59E-03	-----	rs315684
4.27E-01	1.02E-02	3.16E-03	2.59E-04	3.16E-03	9.51E-06	3.16E-03	-----+	rs315682
9.92E-01	5.41E-01	8.22E-03	7.17E-06	8.22E-03	4.62E-04	8.22E-03	----+	rs4697570
NA	3.78E-06	1.35E-02	8.11E-01	1.35E-02	4.18E-03	1.35E-02	+++xx	rs6824813
NA	2.99E-06	7.74E-05	NA	7.74E-05	3.32E-06	7.74E-05	+x+x+x	rs10000269

NA	7.50E-07	2.97E-05	NA	2.97E-05	8.43E-07	2.97E-05	+x+x+x	rs28651948
NA	6.24E-07	2.65E-05	NA	2.65E-05	7.02E-07	2.65E-05	+x+x+x	rs139968109
3.81E-01	3.60E-07	7.25E-05	1.28E-01	7.25E-05	2.26E-06	7.25E-05	+++++	rs28595532
3.45E-01	8.31E-07	8.37E-05	9.28E-02	8.37E-05	1.59E-06	8.37E-05	+++++	rs11098451
NA	2.90E-06	6.19E-06	NA	6.19E-06	3.22E-06	6.19E-06	+xxx+x	chr4:124629474:D
6.10E-03	1.20E-03	2.10E-06	1.66E-03	2.10E-06	9.58E-06	2.10E-06	+++++	rs4572830
4.78E-03	2.32E-04	5.77E-07	2.01E-03	5.77E-07	4.46E-06	5.77E-07	+++++	rs13140317
3.80E-03	6.63E-05	1.55E-07	1.66E-03	1.55E-07	1.30E-06	1.55E-07	+++++	rs12508887
6.58E-03	2.00E-04	1.78E-06	3.28E-03	1.78E-06	5.44E-06	1.78E-06	+++++	rs13125630
NA	4.38E-06	1.50E-05	NA	1.50E-05	4.85E-06	1.50E-05	+x+x+x	rs79623836
NA	6.75E-06	1.94E-05	NA	1.94E-05	7.44E-06	1.94E-05	+x+x+x	rs116226119
NA	1.54E-06	5.30E-06	NA	5.30E-06	1.72E-06	5.30E-06	+x+x+x	rs114311699
6.94E-01	3.05E-03	1.86E-04	4.79E-04	1.86E-04	8.42E-06	1.86E-04	+++++	rs62352163
5.80E-02	6.42E-06	2.14E-03	2.36E-01	2.14E-03	4.84E-04	2.14E-03	+++x+	rs4704367
NA	8.95E-06	5.29E-04	NA	5.29E-04	9.84E-06	5.29E-04	+xxx+x	rs74704845
NA	5.20E-06	3.10E-04	NA	3.10E-04	5.75E-06	3.10E-04	+x+xxx	rs2033454
NA	7.12E-06	2.44E-04	NA	2.44E-04	7.84E-06	2.44E-04	+x+xxx	rs73323306
1.56E-01	2.99E-03	1.42E-06	1.50E-04	1.42E-06	1.74E-06	1.42E-06	++++x+	rs2878892
NA	1.76E-06	1.68E-04	NA	1.68E-04	1.96E-06	1.68E-04	+x+xxx	rs10066744
NA	5.08E-06	1.95E-06	NA	1.95E-06	5.61E-06	1.95E-06	+x+xxx	rs116319917
7.49E-01	3.74E-01	1.41E-01	9.93E-06	1.41E-01	1.36E-02	1.41E-01	+--+	rs1202310
4.98E-01	7.03E-02	6.84E-05	1.31E-05	6.84E-05	5.25E-06	6.84E-05	----x-	chr6:19952232:D
5.79E-01	8.57E-02	9.67E-05	8.64E-06	9.67E-05	2.76E-06	9.67E-05	--x-	rs12190760
5.95E-01	8.03E-02	3.30E-04	1.71E-05	3.30E-04	7.15E-06	3.30E-04	--x-	rs12193640
6.48E-01	NA	7.77E-06	8.43E-06	7.77E-06	9.72E-06	7.77E-06	x+x+x+	rs114982299
1.48E-02	7.91E-02	2.02E-03	6.54E-07	2.02E-03	2.10E-03	2.02E-03	-+++	rs72906044
3.24E-02	7.79E-02	6.36E-04	4.44E-07	6.36E-04	1.57E-03	6.36E-04	-+++	chr6:51199846:D
9.68E-03	4.91E-02	7.92E-04	1.46E-07	7.92E-04	1.22E-03	7.92E-04	-+++	rs17665889
1.46E-02	6.46E-02	1.15E-03	7.33E-07	1.15E-03	2.30E-03	1.15E-03	-+++	rs16881418
1.07E-02	6.61E-02	1.01E-03	2.31E-07	1.01E-03	1.26E-03	1.01E-03	-+++	rs7738302
1.16E-02	6.75E-02	1.05E-03	2.67E-07	1.05E-03	1.34E-03	1.05E-03	-+++	rs12529854
1.27E-02	8.54E-02	9.65E-04	2.86E-07	9.65E-04	1.17E-03	9.65E-04	-+++	rs1327284
1.25E-02	9.25E-02	8.70E-04	2.78E-07	8.70E-04	1.06E-03	8.70E-04	-+++	rs10498783
1.18E-02	9.72E-02	1.14E-03	3.56E-07	1.14E-03	1.16E-03	1.14E-03	-+++	rs1327280
1.19E-02	1.06E-01	7.31E-04	2.67E-07	7.31E-04	9.03E-04	7.31E-04	-+++	chr6:51255307:D
2.24E-02	NA	1.74E-06	2.02E-06	1.74E-06	2.38E-06	1.74E-06	x+x+x+	rs12527522
1.80E-02	1.11E-01	3.01E-03	7.92E-06	3.01E-03	6.70E-03	3.01E-03	-+++	rs6940087
1.69E-02	1.92E-01	2.08E-03	5.87E-06	2.08E-03	4.84E-03	2.08E-03	-+++	rs72906075
2.14E-02	1.04E-01	9.08E-04	1.52E-06	9.08E-04	2.36E-03	9.08E-04	-+++	rs1857188
1.78E-02	9.59E-02	3.35E-03	8.10E-06	3.35E-03	7.46E-03	3.35E-03	-+++	rs111885630
1.77E-02	1.01E-01	3.28E-03	8.16E-06	3.28E-03	7.48E-03	3.28E-03	-+++	rs12524614
2.64E-02	4.84E-01	7.72E-04	6.84E-06	7.72E-04	2.47E-03	7.72E-04	-+++	rs16881457
2.68E-02	5.76E-01	5.49E-04	5.19E-06	5.49E-04	1.54E-03	5.49E-04	-+++	rs16881462
6.78E-02	2.58E-01	4.93E-03	6.55E-06	4.93E-03	5.93E-03	4.93E-03	-+++	rs72900275
5.51E-02	1.80E-01	5.76E-03	7.55E-06	5.76E-03	9.12E-03	5.76E-03	-+++	rs72900278
8.12E-02	4.72E-01	3.46E-03	9.89E-06	3.46E-03	4.55E-03	3.46E-03	-+++	rs16881539

8.32E-02	3.56E-01	4.62E-03	8.92E-06	4.62E-03	5.27E-03	4.62E-03	-++++	rs17814136
7.41E-02	3.80E-01	4.61E-03	9.97E-06	4.61E-03	5.01E-03	4.61E-03	-++++	rs60207381
7.12E-02	4.65E-01	3.45E-03	6.87E-06	3.45E-03	3.74E-03	3.45E-03	-++++	rs74536655
7.36E-02	3.94E-01	3.66E-03	8.68E-06	3.66E-03	4.26E-03	3.66E-03	-++++	rs72902183
6.76E-02	4.60E-01	3.46E-03	6.83E-06	3.46E-03	3.78E-03	3.46E-03	-++++	rs12528509
7.36E-02	3.92E-01	3.68E-03	8.65E-06	3.68E-03	4.27E-03	3.68E-03	-++++	rs12528978
8.78E-02	NA	4.45E-06	1.75E-06	4.45E-06	2.06E-06	4.45E-06	x+x+xx	rs13209289
1.09E-01	NA	2.57E-05	7.01E-06	2.57E-05	8.11E-06	2.57E-05	x+x+xx	rs11751461
NA	1.39E-06	4.13E-06	NA	4.13E-06	1.56E-06	4.13E-06	+x+x+x	rs189276636
NA	9.41E-06	3.57E-04	NA	3.57E-04	1.03E-05	3.57E-04	+x-x+x	rs10267821
NA	5.39E-06	2.29E-04	NA	2.29E-04	5.96E-06	2.29E-04	+x-x+x	rs28507362
NA	2.69E-06	1.75E-04	NA	1.75E-04	2.99E-06	1.75E-04	+x-x+x	rs6967571
4.52E-01	6.80E-03	1.36E-06	1.67E-04	1.36E-06	6.35E-06	1.36E-06	+++++x	chr7:75707519:D
3.43E-02	6.77E-01	5.92E-04	6.14E-06	5.92E-04	1.71E-04	5.92E-04	-++++	rs2732768
1.04E-01	7.00E-03	3.32E-06	9.91E-06	3.32E-06	2.72E-07	3.32E-06	+++++	rs12534830
4.43E-02	2.71E-01	2.04E-02	6.45E-06	2.04E-02	1.14E-02	2.04E-02	+--+	rs4143206
4.38E-02	3.52E-01	1.40E-04	3.17E-06	1.40E-04	2.42E-05	1.40E-04	+++++	rs2732766
4.35E-02	3.59E-01	1.44E-04	2.90E-06	1.44E-04	2.36E-05	1.44E-04	+++++	rs1405974
5.33E-02	2.72E-01	2.64E-02	7.91E-06	2.64E-02	1.23E-02	2.64E-02	+--+	rs1346686
3.97E-02	3.71E-01	1.41E-04	2.58E-06	1.41E-04	2.30E-05	1.41E-04	+++++	rs2732765
4.35E-02	3.59E-01	1.44E-04	2.90E-06	1.44E-04	2.36E-05	1.44E-04	+++++	rs2732764
4.43E-02	3.93E-01	1.81E-04	3.03E-06	1.81E-04	2.90E-05	1.81E-04	+++++	rs2564777
4.35E-02	3.59E-01	1.44E-04	2.90E-06	1.44E-04	2.35E-05	1.44E-04	+++++	rs2564778
2.60E-02	2.08E-01	2.82E-05	3.52E-06	2.82E-05	1.12E-05	2.82E-05	+++++	rs7385520
5.52E-02	8.63E-02	1.51E-05	2.58E-06	1.51E-05	2.58E-06	1.51E-05	+++++	rs7385554
5.11E-02	5.35E-01	3.14E-04	2.14E-06	3.14E-04	3.95E-05	3.14E-04	+++++	rs4333515
5.19E-02	5.18E-01	2.30E-04	3.60E-06	2.30E-04	6.82E-05	2.30E-04	+++++	rs4275151
6.66E-02	2.61E-01	2.42E-02	8.52E-06	2.42E-02	1.32E-02	2.42E-02	+--+	rs4560724
7.00E-02	9.04E-02	4.15E-05	8.12E-06	4.15E-05	5.83E-06	4.15E-05	+++++	rs2564780
4.42E-02	3.55E-01	1.26E-04	2.46E-06	1.26E-04	2.03E-05	1.26E-04	+++++	rs2696173
4.30E-02	3.33E-01	1.18E-04	2.43E-06	1.18E-04	1.80E-05	1.18E-04	+++++	rs2696174
5.39E-02	2.82E-01	2.44E-02	6.51E-06	2.44E-02	1.08E-02	2.44E-02	+--+	rs1540847
4.13E-02	3.45E-01	1.28E-04	2.54E-06	1.28E-04	1.98E-05	1.28E-04	+++++	rs1835285
5.64E-02	3.80E-01	1.99E-02	5.75E-06	1.99E-02	6.83E-03	1.99E-02	---+	rs7455090
5.29E-02	2.94E-01	1.85E-02	3.93E-06	1.85E-02	8.21E-03	1.85E-02	+--+	rs10265865
5.33E-02	3.08E-01	2.23E-02	6.86E-06	2.23E-02	9.85E-03	2.23E-02	+--+	rs1429748
3.78E-02	3.29E-01	4.65E-02	8.34E-06	4.65E-02	1.04E-02	4.65E-02	+--+	rs7788690
4.63E-02	3.78E-01	2.08E-04	4.33E-06	2.08E-04	3.91E-05	2.08E-04	+----	rs2033294
2.92E-02	7.63E-01	2.22E-03	3.50E-06	2.22E-03	2.08E-04	2.22E-03	+---+	rs2033295
4.05E-02	6.38E-01	4.57E-04	2.99E-06	4.57E-04	8.66E-05	4.57E-04	+----	rs2888404
2.41E-02	9.14E-01	4.59E-03	3.91E-06	4.59E-03	6.11E-04	4.59E-03	+---+	rs7805482
3.51E-02	6.72E-01	3.72E-04	1.92E-06	3.72E-04	7.46E-05	3.72E-04	+---+	rs6950763
1.60E-01	7.92E-03	4.81E-06	2.62E-05	4.81E-06	8.15E-07	4.81E-06	+++++	rs12536813
2.50E-02	8.83E-01	4.21E-03	4.68E-06	4.21E-03	7.48E-04	4.21E-03	+---+	rs10270393
1.72E-02	8.45E-01	4.98E-03	5.39E-06	4.98E-03	9.56E-04	4.98E-03	+---+	rs6964515
NA	5.08E-06	1.29E-05	NA	1.29E-05	5.62E-06	1.29E-05	xx+x+x	rs78596049

7.25E-05	NA	7.16E-04	7.37E-06	7.16E-04	8.52E-06	7.16E-04	x-x+x+	rs77837076
1.25E-04	1.32E-01	2.88E-03	5.13E-06	2.88E-03	1.18E-05	2.88E-03	++++x+	rs34937939
2.08E-04	NA	3.53E-03	9.44E-06	3.53E-03	3.93E-05	3.53E-03	+x+x+	rs34065982
3.93E-01	1.91E-07	2.56E-04	6.78E-02	2.56E-04	1.10E-05	2.56E-04	+++++	chr7:127381495:l
4.71E-01	1.41E-04	7.72E-05	8.28E-03	7.72E-05	6.77E-06	7.72E-05	++++xx	rs79925690
1.79E-02	NA	2.78E-05	7.28E-08	2.78E-05	2.34E-06	2.78E-05	--x+x+	rs7832545
1.82E-02	3.00E-01	4.14E-06	2.95E-08	4.14E-06	1.02E-07	4.14E-06	+++x+	rs77378271
2.06E-02	NA	4.44E-06	8.83E-08	4.44E-06	2.42E-07	4.44E-06	+x+x+	rs75721860
NA	3.19E-07	3.27E-04	NA	3.27E-04	3.61E-07	3.27E-04	xx+x+x	rs7836257
6.50E-01	3.32E-03	2.59E-05	2.24E-04	2.59E-05	2.80E-06	2.59E-05	+++++	rs902820
4.90E-01	2.56E-01	1.66E-01	3.84E-06	1.66E-01	6.93E-02	1.66E-01	+---xx	rs192069564
2.83E-02	NA	9.90E-04	3.39E-06	9.90E-04	3.96E-06	9.90E-04	x+x+x+	rs77322165
2.83E-02	NA	9.83E-04	3.24E-06	9.83E-04	3.79E-06	9.83E-04	x+x+x+	rs10969090
2.83E-02	NA	9.90E-04	2.98E-06	9.90E-04	3.49E-06	9.90E-04	x+x+x+	rs78011063
3.44E-02	NA	1.10E-03	4.99E-07	1.10E-03	5.98E-07	1.10E-03	x+x+x+	rs75849759
3.04E-02	NA	4.04E-05	3.70E-07	4.04E-05	4.45E-07	4.04E-05	x+x+x+	rs10969106
3.51E-02	NA	5.94E-05	6.38E-07	5.94E-05	7.62E-07	5.94E-05	x+x+x+	rs80128289
3.75E-02	NA	9.35E-05	9.48E-07	9.35E-05	1.13E-06	9.35E-05	x+x+x+	rs8181059
5.78E-01	NA	1.95E-03	4.74E-05	1.95E-03	8.59E-06	1.95E-03	x+++x+	rs118089179
1.72E-01	9.41E-06	9.82E-03	7.56E-01	9.82E-03	7.94E-03	9.82E-03	-+---	rs10869996
1.55E-01	9.14E-06	6.07E-03	8.82E-01	6.07E-03	3.16E-03	6.07E-03	-+---	rs10781482
1.53E-01	8.87E-06	6.10E-03	8.86E-01	6.10E-03	3.16E-03	6.10E-03	-+---	rs10781489
NA	3.76E-06	1.06E-03	NA	1.06E-03	4.16E-06	1.06E-03	+x+xxx	rs7853028
6.38E-02	1.51E-01	1.31E-03	7.24E-06	1.31E-03	1.49E-05	1.31E-03	---x-	rs7081023
1.76E-01	1.54E-03	5.15E-05	1.16E-03	5.15E-05	6.46E-06	5.15E-05	+++xx	rs2399788
NA	3.39E-07	3.15E-06	NA	3.15E-06	3.84E-07	3.15E-06	+x+x+x	rs115881020
NA	3.45E-07	3.74E-06	NA	3.74E-06	3.91E-07	3.74E-06	+x+x+x	rs114400896
NA	9.17E-08	8.78E-08	NA	8.78E-08	1.05E-07	8.78E-08	+x+x+x	rs115553536
NA	7.24E-07	1.26E-06	NA	1.26E-06	8.14E-07	1.26E-06	+x+x+x	rs116449238
NA	1.78E-06	3.00E-06	NA	3.00E-06	1.98E-06	3.00E-06	+x+x+x	rs9888015
2.44E-01	NA	5.16E-07	1.97E-07	5.16E-07	2.39E-07	5.16E-07	x+x+x+	rs76942454
6.36E-01	NA	1.97E-06	9.89E-07	1.97E-06	1.17E-06	1.97E-06	x+x+x+	rs74361869
6.36E-01	NA	1.99E-06	9.88E-07	1.99E-06	1.17E-06	1.99E-06	x+x+x+	rs75381638
6.34E-01	NA	2.09E-06	1.00E-06	2.09E-06	1.19E-06	2.09E-06	x+x+x+	rs3026705
6.34E-01	NA	2.30E-06	9.47E-07	2.30E-06	1.12E-06	2.30E-06	x+x+x+	rs3026713
9.14E-01	NA	4.60E-06	6.05E-07	4.60E-06	7.23E-07	4.60E-06	x+x+xx	rs3026721
9.56E-01	NA	6.69E-06	7.64E-07	6.69E-06	9.10E-07	6.69E-06	x+x+xx	rs80080342
9.38E-01	NA	5.45E-06	7.16E-07	5.45E-06	8.53E-07	5.45E-06	x+x+xx	rs74865054
9.54E-01	NA	6.56E-06	7.95E-07	6.56E-06	9.47E-07	6.56E-06	x+x+xx	rs77154599
9.65E-01	NA	6.08E-06	8.33E-07	6.08E-06	9.91E-07	6.08E-06	x+x+xx	rs74438020
9.66E-01	NA	6.06E-06	8.37E-07	6.06E-06	9.96E-07	6.06E-06	x+x+xx	chr10:43579081:D
9.70E-01	NA	5.99E-06	8.67E-07	5.99E-06	1.03E-06	5.99E-06	x+x+xx	rs77776459
9.80E-01	NA	6.57E-06	9.77E-07	6.57E-06	1.16E-06	6.57E-06	x+x+xx	rs76568066
9.77E-01	NA	4.67E-06	7.40E-07	4.67E-06	8.82E-07	4.67E-06	x+x+xx	rs76837320
7.40E-01	1.15E-01	2.14E-06	2.51E-07	2.14E-06	6.60E-07	2.14E-06	++--+x	rs74400468
9.60E-01	NA	1.73E-06	3.38E-07	1.73E-06	4.07E-07	1.73E-06	x+x+xx	rs142883467

9.66E-01	NA	1.03E-03	9.12E-06	1.03E-03	1.84E-03	1.03E-03	x+-xx	rs11238474
7.33E-01	5.18E-05	5.39E-05	3.43E-02	5.39E-05	8.01E-06	5.39E-05	----x	rs10762724
NA	5.71E-06	4.14E-04	NA	4.14E-04	6.31E-06	4.14E-04	+x+x+x	rs146091982
NA	8.98E-06	5.04E-04	NA	5.04E-04	9.87E-06	5.04E-04	+x+x+x	chr10:95669221:D
2.64E-01	4.71E-04	2.23E-05	3.31E-03	2.23E-05	7.30E-06	2.23E-05	+++++	rs115058152
4.28E-02	4.16E-06	5.03E-02	3.74E-01	5.03E-02	1.66E-02	5.03E-02	+++++	rs11575631
4.29E-02	5.67E-06	5.31E-02	3.81E-01	5.31E-02	1.84E-02	5.31E-02	+++++	rs11575634
3.63E-02	4.61E-06	5.13E-02	3.52E-01	5.13E-02	1.94E-02	5.13E-02	+++++	rs4643011
2.29E-02	3.95E-07	5.47E-06	NA	5.47E-06	4.47E-07	5.47E-06	-x-x-x	rs73443003
1.25E-02	3.77E-01	1.43E-03	7.61E-06	1.43E-03	1.35E-04	1.43E-03	+++++	rs12278342
1.20E-02	3.56E-01	1.22E-03	7.03E-06	1.22E-03	1.14E-04	1.22E-03	+++++	chr11:22884459:D
1.82E-02	1.01E-01	4.80E-04	8.13E-06	4.80E-04	4.42E-05	4.80E-04	+++++	rs12293401
1.14E-02	3.36E-01	1.05E-03	6.47E-06	1.05E-03	9.65E-05	1.05E-03	+++++	rs12294894
7.71E-03	7.24E-01	5.92E-03	5.51E-06	5.92E-03	9.38E-04	5.92E-03	+++++	chr11:22885400:D
1.80E-02	8.68E-02	4.06E-04	7.97E-06	4.06E-04	3.40E-05	4.06E-04	+++++	rs72865358
1.72E-02	1.48E-01	8.88E-04	7.71E-06	8.88E-04	7.89E-05	8.88E-04	+++++	rs4540836
2.60E-02	1.54E-01	1.02E-03	9.43E-06	1.02E-03	9.82E-05	1.02E-03	+++++	rs4459305
2.64E-02	1.67E-01	1.01E-03	8.25E-06	1.01E-03	1.04E-04	1.01E-03	+++++	rs4427562
1.71E-02	1.00E-01	4.36E-04	7.65E-06	4.36E-04	4.17E-05	4.36E-04	+++++	rs7946163
2.46E-02	1.65E-01	1.04E-03	9.71E-06	1.04E-03	1.12E-04	1.04E-03	+++++	rs12275725
2.42E-02	1.89E-01	1.29E-03	9.37E-06	1.29E-03	1.37E-04	1.29E-03	+++++	rs4922632
1.09E-02	3.08E-01	7.81E-04	5.81E-06	7.81E-04	7.44E-05	7.81E-04	+++++	rs61889513
2.56E-02	1.65E-01	7.94E-04	6.66E-06	7.94E-04	8.83E-05	7.94E-04	+++++	rs12292718
1.53E-02	9.16E-02	3.95E-04	8.49E-06	3.95E-04	3.80E-05	3.95E-04	+++++	rs12292974
2.08E-02	2.06E-01	5.59E-04	4.66E-06	5.59E-04	1.07E-04	5.59E-04	+++++	rs4384387
2.27E-02	2.11E-01	3.97E-04	2.96E-06	3.97E-04	9.16E-05	3.97E-04	+++++	rs4244495
2.08E-02	2.08E-01	5.77E-04	4.59E-06	5.77E-04	1.08E-04	5.77E-04	+++++	rs4923035
1.39E-02	1.25E-01	2.80E-04	5.04E-06	2.80E-04	4.69E-05	2.80E-04	+++++	rs4486627
1.38E-02	1.25E-01	2.79E-04	5.01E-06	2.79E-04	4.67E-05	2.79E-04	+++++	rs4495893
1.38E-02	1.25E-01	2.79E-04	5.00E-06	2.79E-04	4.67E-05	2.79E-04	+++++	rs4255538
1.35E-02	1.41E-01	2.64E-04	4.31E-06	2.64E-04	5.13E-05	2.64E-04	+++++	rs4466830
1.36E-02	1.25E-01	2.74E-04	4.89E-06	2.74E-04	4.61E-05	2.74E-04	+++++	chr11:22894411:D
1.17E-02	1.27E-01	2.02E-04	3.93E-06	2.02E-04	4.11E-05	2.02E-04	+++++	rs12284580
1.29E-02	1.26E-01	2.57E-04	4.94E-06	2.57E-04	4.65E-05	2.57E-04	+++++	rs12277600
1.62E-02	1.20E-01	2.68E-04	4.95E-06	2.68E-04	4.26E-05	2.68E-04	+++++	rs9783311
2.14E-02	2.01E-01	5.22E-04	4.24E-06	5.22E-04	9.80E-05	5.22E-04	+++++	rs9783404
1.11E-02	1.08E-01	7.97E-05	3.45E-06	7.97E-05	2.80E-05	7.97E-05	+++++	rs12284600
1.08E-02	1.68E-01	2.83E-04	3.01E-06	2.83E-04	5.80E-05	2.83E-04	+++++	rs12284602
8.28E-03	3.15E-01	7.41E-04	3.58E-06	7.41E-04	2.25E-04	7.41E-04	+++++	chr11:22898264:I
8.91E-03	4.28E-01	1.12E-03	4.03E-06	1.12E-03	1.04E-04	1.12E-03	+++++	rs10488701
1.08E-02	1.90E-01	3.42E-04	2.53E-06	3.42E-04	6.50E-05	3.42E-04	+++++	rs2429779
1.68E-02	1.93E-01	5.57E-04	7.12E-06	5.57E-04	1.18E-04	5.57E-04	+++++	rs11026825
1.07E-02	1.41E-01	2.86E-04	3.00E-06	2.86E-04	4.29E-05	2.86E-04	+++++	rs12290230
1.07E-02	1.97E-01	3.96E-04	3.00E-06	3.96E-04	7.67E-05	3.96E-04	+++++	rs2403776
1.07E-02	1.97E-01	3.97E-04	2.99E-06	3.97E-04	7.66E-05	3.97E-04	+++++	rs2429777
1.07E-02	1.97E-01	3.96E-04	3.01E-06	3.96E-04	7.67E-05	3.96E-04	+++++	rs2253956

1.03E-02	1.95E-01	3.03E-04	2.68E-06	3.03E-04	7.00E-05	3.03E-04	+++++	rs2429776
5.46E-03	1.36E-01	3.57E-04	4.44E-06	3.57E-04	1.04E-04	3.57E-04	+++++	rs2429775
8.75E-03	4.55E-01	1.14E-03	4.11E-06	1.14E-03	1.19E-04	1.14E-03	+++++	rs2429774
1.55E-02	2.82E-01	6.83E-04	3.15E-06	6.83E-04	1.59E-04	6.83E-04	+++++	rs2470329
1.18E-02	2.02E-01	5.99E-04	5.51E-06	5.99E-04	1.17E-04	5.99E-04	+++++	chr11:22903503:l
1.22E-02	1.83E-01	4.77E-04	3.85E-06	4.77E-04	8.01E-05	4.77E-04	+++++	rs2429773
1.07E-02	1.97E-01	3.96E-04	3.28E-06	3.96E-04	8.13E-05	3.96E-04	+++++	rs4296039
1.07E-02	1.97E-01	3.97E-04	3.39E-06	3.97E-04	8.25E-05	3.97E-04	+++++	rs4543991
1.07E-02	2.08E-01	4.75E-04	3.19E-06	4.75E-04	8.70E-05	4.75E-04	+++++	rs2470309
8.75E-03	4.60E-01	1.18E-03	4.47E-06	1.18E-03	1.29E-04	1.18E-03	+++++	rs2470308
1.07E-02	1.97E-01	3.99E-04	3.54E-06	3.99E-04	8.42E-05	3.99E-04	+++++	rs2470306
1.55E-02	2.92E-01	6.24E-04	3.25E-06	6.24E-04	1.73E-04	6.24E-04	+++++	rs2429772
1.07E-02	1.96E-01	4.00E-04	3.62E-06	4.00E-04	8.53E-05	4.00E-04	+++++	rs2429771
1.07E-02	1.96E-01	4.00E-04	3.64E-06	4.00E-04	8.55E-05	4.00E-04	+++++	rs2429770
1.07E-02	1.96E-01	4.01E-04	3.68E-06	4.01E-04	8.59E-05	4.01E-04	+++++	rs2429769
1.24E-02	1.95E-01	4.93E-04	5.15E-06	4.93E-04	1.01E-04	4.93E-04	+++++	chr11:22907658:D
2.41E-02	2.61E-01	9.51E-04	7.24E-06	9.51E-04	2.09E-04	9.51E-04	+++++	rs2429768
1.22E-02	1.90E-01	4.04E-04	3.81E-06	4.04E-04	8.25E-05	4.04E-04	+++++	rs2429767
1.22E-02	1.90E-01	4.04E-04	3.87E-06	4.04E-04	8.32E-05	4.04E-04	+++++	rs2429766
1.22E-02	1.71E-01	3.61E-04	3.92E-06	3.61E-04	6.97E-05	3.61E-04	+++++	rs2470304
1.22E-02	1.89E-01	4.05E-04	3.93E-06	4.05E-04	8.38E-05	4.05E-04	+++++	rs2470303
1.22E-02	1.89E-01	4.07E-04	4.10E-06	4.07E-04	8.56E-05	4.07E-04	+++++	rs2429765
1.76E-02	2.82E-01	6.34E-04	3.79E-06	6.34E-04	1.76E-04	6.34E-04	+++++	rs2429764
1.76E-02	2.82E-01	6.36E-04	3.89E-06	6.36E-04	1.78E-04	6.36E-04	+++++	rs2429763
9.41E-03	1.74E-01	4.33E-04	3.09E-06	4.33E-04	6.12E-05	4.33E-04	+++++	chr11:22910682:l
1.76E-02	2.81E-01	6.39E-04	4.07E-06	6.39E-04	1.82E-04	6.39E-04	+++++	rs2429761
1.22E-02	1.94E-01	4.41E-04	4.55E-06	4.41E-04	9.48E-05	4.41E-04	+++++	rs983867
1.21E-02	1.74E-01	3.69E-04	5.15E-06	3.69E-04	8.42E-05	3.69E-04	+++++	rs2429760
1.21E-02	1.88E-01	4.18E-04	5.13E-06	4.18E-04	9.59E-05	4.18E-04	+++++	rs113236916
1.29E-02	1.86E-01	4.39E-04	4.85E-06	4.39E-04	9.43E-05	4.39E-04	+++++	rs56892416
1.16E-02	1.87E-01	3.26E-04	4.60E-06	3.26E-04	8.92E-05	3.26E-04	+++++	rs987866
1.00E-02	5.48E-01	1.74E-03	6.81E-06	1.74E-03	2.43E-04	1.74E-03	+++++	rs987865
1.29E-02	1.90E-01	4.16E-04	3.94E-06	4.16E-04	8.30E-05	4.16E-04	+++++	rs2470301
1.21E-02	1.38E-01	2.68E-04	4.86E-06	2.68E-04	5.46E-05	2.68E-04	+++++	rs2429757
1.00E-02	5.60E-01	1.84E-03	6.98E-06	1.84E-03	2.59E-04	1.84E-03	+++++	rs2470300
1.21E-02	1.39E-01	2.69E-04	4.87E-06	2.69E-04	5.48E-05	2.69E-04	+++++	rs2429756
1.21E-02	1.39E-01	2.69E-04	4.87E-06	2.69E-04	5.48E-05	2.69E-04	+++++	rs2429755
1.21E-02	1.39E-01	2.69E-04	4.87E-06	2.69E-04	5.48E-05	2.69E-04	+++++	rs2429754
1.21E-02	1.39E-01	2.68E-04	4.87E-06	2.68E-04	5.48E-05	2.68E-04	+++++	rs2429753
1.75E-02	2.14E-01	4.22E-04	4.44E-06	4.22E-04	1.14E-04	4.22E-04	+++++	rs2041471
1.14E-02	1.38E-01	2.62E-04	4.67E-06	2.62E-04	5.35E-05	2.62E-04	+++++	rs2429752
1.00E-02	5.59E-01	1.79E-03	6.65E-06	1.79E-03	2.50E-04	1.79E-03	+++++	rs2429751
1.08E-02	5.66E-01	1.04E-03	5.45E-06	1.04E-03	2.89E-04	1.04E-03	+++++	rs929538
9.33E-01	7.56E-08	2.61E-03	6.07E-01	2.61E-03	1.72E-04	2.61E-03	++++	chr11:81433204:l
8.62E-01	9.59E-07	4.00E-02	6.82E-01	4.00E-02	1.95E-03	4.00E-02	++++	chr11:81454803:D
NA	7.43E-06	6.84E-04	NA	6.84E-04	8.18E-06	6.84E-04	+x+x+x	rs116474042

NA	9.91E-06	2.24E-04	NA	2.24E-04	1.09E-05	2.24E-04	+xxx+x	rs116617578
2.85E-02	1.07E-01	3.22E-04	8.54E-06	3.22E-04	2.71E-06	3.22E-04	x+++++	rs12807443
2.02E-02	4.61E-01	3.94E-04	5.39E-06	3.94E-04	1.66E-05	3.94E-04	+++++	rs71475112
2.29E-02	4.29E-01	3.65E-04	6.77E-06	3.65E-04	1.78E-05	3.65E-04	+++++	rs34883645
2.29E-02	4.29E-01	3.66E-04	6.80E-06	3.66E-04	1.78E-05	3.66E-04	+++++	rs17705117
2.64E-02	NA	4.94E-04	9.92E-06	4.94E-04	6.22E-06	4.94E-04	x+x+++	rs10502107
2.14E-02	4.61E-01	4.00E-04	9.19E-06	4.00E-04	2.48E-05	4.00E-04	+++++	rs71475113
2.14E-02	4.63E-01	4.46E-04	9.05E-06	4.46E-04	2.47E-05	4.46E-04	+++++	rs74640618
3.53E-02	1.62E-01	1.21E-04	5.09E-07	1.21E-04	3.73E-07	1.21E-04	+++++	chr11:108899423:D
2.14E-02	6.21E-01	6.10E-04	9.44E-06	6.10E-04	4.31E-05	6.10E-04	+++++	rs12785289
5.94E-03	4.71E-01	3.54E-04	8.02E-06	3.54E-04	2.36E-05	3.54E-04	+++++	rs71475116
1.88E-02	3.98E-01	3.75E-04	9.67E-06	3.75E-04	2.07E-05	3.75E-04	+++++	rs145386102
4.48E-01	2.89E-06	1.51E-05	NA	1.51E-05	3.21E-06	1.51E-05	+x+xxx	rs6589099
4.47E-02	7.88E-06	3.93E-04	2.14E-01	3.93E-04	7.94E-05	3.93E-04	+++++	rs4763938
NA	1.43E-06	1.29E-06	NA	1.29E-06	1.60E-06	1.29E-06	+x+xxx	rs193047854
8.30E-01	7.45E-06	1.33E-02	5.42E-01	1.33E-02	1.63E-02	1.33E-02	-+---+	rs963921
9.41E-01	2.80E-01	3.65E-03	7.42E-06	3.65E-03	1.37E-04	3.65E-03	++++x+	rs61934921
NA	8.56E-06	1.03E-06	NA	1.03E-06	9.41E-06	1.03E-06	+x+x+x	rs149438816
NA	5.26E-06	6.27E-07	NA	6.27E-07	5.81E-06	6.27E-07	+x+x+x	rs116063167
NA	5.05E-06	6.29E-07	NA	6.29E-07	5.59E-06	6.29E-07	+x+x+x	rs116444748
NA	2.03E-06	2.59E-05	NA	2.59E-05	2.26E-06	2.59E-05	+x+x+x	rs10162069
NA	1.04E-06	1.19E-05	NA	1.19E-05	1.16E-06	1.19E-05	+x+x+x	rs9601205
NA	1.03E-06	1.18E-05	NA	1.18E-05	1.16E-06	1.18E-05	+x+x+x	rs9601206
NA	1.01E-06	1.16E-05	NA	1.16E-05	1.14E-06	1.16E-05	+x+x+x	rs79256830
NA	9.43E-06	3.40E-05	NA	3.40E-05	1.04E-05	3.40E-05	-x-x-x	rs2329115
NA	4.99E-06	1.71E-05	NA	1.71E-05	5.51E-06	1.71E-05	-x-x-x	rs4885623
NA	1.91E-07	2.24E-06	NA	2.24E-06	2.17E-07	2.24E-06	+x+x+x	rs143748364
NA	1.90E-06	1.50E-05	NA	1.50E-05	2.12E-06	1.50E-05	+x+x+x	rs116669275
NA	1.94E-06	1.52E-05	NA	1.52E-05	2.16E-06	1.52E-05	+x+x+x	rs9601228
NA	1.86E-06	1.24E-05	NA	1.24E-05	2.08E-06	1.24E-05	+x+x+x	rs9601230
NA	1.24E-06	7.90E-06	NA	7.90E-06	1.39E-06	7.90E-06	+x+x+x	rs9593398
NA	4.24E-06	1.73E-05	NA	1.73E-05	4.69E-06	1.73E-05	+x+x+x	chr13:80031949:D
NA	2.35E-06	1.27E-05	NA	1.27E-05	2.61E-06	1.27E-05	+x+x+x	rs79054219
NA	8.28E-06	2.36E-05	NA	2.36E-05	9.11E-06	2.36E-05	+x+x+x	rs115435584
NA	3.45E-06	1.25E-05	NA	1.25E-05	3.83E-06	1.25E-05	+x+x+x	rs9601236
NA	4.20E-06	1.32E-05	NA	1.32E-05	4.65E-06	1.32E-05	+x+x+x	rs114858730
NA	3.41E-06	1.24E-05	NA	1.24E-05	3.78E-06	1.24E-05	+x+x+x	rs77796609
NA	3.40E-06	1.22E-05	NA	1.22E-05	3.77E-06	1.22E-05	+x+x+x	rs76602452
NA	9.70E-06	2.83E-05	NA	2.83E-05	1.07E-05	2.83E-05	+x+x+x	rs116284533
NA	5.88E-06	1.46E-05	NA	1.46E-05	6.49E-06	1.46E-05	+x+x+x	rs9593403
NA	2.38E-06	7.35E-06	NA	7.35E-06	2.65E-06	7.35E-06	+x+x+x	rs115651893
NA	5.78E-06	1.40E-05	NA	1.40E-05	6.38E-06	1.40E-05	+x+x+x	rs13378140
NA	5.81E-06	1.40E-05	NA	1.40E-05	6.42E-06	1.40E-05	+x+x+x	rs138672395
NA	6.43E-06	1.36E-05	NA	1.36E-05	7.10E-06	1.36E-05	+x+x+x	rs9601245
NA	6.58E-06	1.35E-05	NA	1.35E-05	7.25E-06	1.35E-05	+x+x+x	rs9601246
3.92E-01	1.69E-06	1.07E-02	2.35E-01	1.07E-02	5.37E-04	1.07E-02	+----+	rs9514837

5.51E-01	4.50E-06	2.53E-02	4.76E-01	2.53E-02	4.17E-03	2.53E-02	+++x+	rs9520847
2.51E-01	3.37E-06	1.43E-02	4.71E-01	1.43E-02	8.14E-03	1.43E-02	+++++	rs7143485
2.60E-01	3.28E-06	1.35E-02	4.75E-01	1.35E-02	7.93E-03	1.35E-02	+++++	rs7143702
7.48E-01	NA	2.89E-02	1.26E-06	2.89E-02	1.50E-06	2.89E-02	x+x+x+	rs77669601
7.73E-01	NA	2.89E-02	1.24E-06	2.89E-02	1.47E-06	2.89E-02	x+x+x+	chr14:73068127:D
4.80E-01	NA	1.75E-03	8.63E-06	1.75E-03	9.95E-06	1.75E-03	x+x+x+	rs144429502
1.19E-01	7.98E-06	4.84E-04	1.79E-01	4.84E-04	2.54E-05	4.84E-04	++++x-	rs999683
1.46E-01	6.95E-01	2.74E-03	7.05E-06	2.74E-03	4.27E-04	2.74E-03	----+	rs674117
1.47E-01	6.93E-01	2.79E-03	6.41E-06	2.79E-03	4.02E-04	2.79E-03	----+	rs674638
1.51E-01	7.02E-01	2.70E-03	6.29E-06	2.70E-03	4.11E-04	2.70E-03	----+	rs674676
1.33E-01	7.34E-01	2.85E-03	4.30E-06	2.85E-03	3.81E-04	2.85E-03	----+	rs663992
1.69E-01	7.12E-01	4.52E-03	9.05E-06	4.52E-03	4.61E-04	4.52E-03	--++	rs675599
1.31E-01	6.98E-01	2.66E-03	5.10E-06	2.66E-03	3.57E-04	2.66E-03	----+	rs664768
2.01E-01	7.11E-01	3.46E-03	8.86E-06	3.46E-03	5.20E-04	3.46E-03	----+	rs664824
1.55E-01	4.95E-01	2.22E-03	5.32E-06	2.22E-03	1.67E-04	2.22E-03	----+	rs676476
NA	3.36E-07	3.91E-03	NA	3.91E-03	3.81E-07	3.91E-03	xx+x+x	rs189167038
NA	1.81E-06	1.28E-03	NA	1.28E-03	2.02E-06	1.28E-03	xx+x-x	rs142162415
NA	2.51E-06	1.68E-03	NA	1.68E-03	2.79E-06	1.68E-03	xx+x+x	rs117047810
5.52E-01	4.60E-06	1.33E-01	3.55E-01	1.33E-01	6.14E-02	1.33E-01	++++-	rs144014689
NA	1.03E-06	2.79E-04	NA	2.79E-04	1.16E-06	2.79E-04	+x+xxx	rs138761776
NA	3.74E-07	6.42E-05	NA	6.42E-05	4.23E-07	6.42E-05	+x+xxx	rs11466037
NA	4.86E-06	7.06E-04	NA	7.06E-04	5.37E-06	7.06E-04	+x+xxx	rs11466035
NA	6.58E-07	2.40E-04	NA	2.40E-04	7.40E-07	2.40E-04	+x+xxx	rs7185672
NA	8.42E-08	8.25E-05	NA	8.25E-05	9.65E-08	8.25E-05	+x+xxx	rs183568578
NA	1.68E-07	1.02E-04	NA	1.02E-04	1.92E-07	1.02E-04	+x+xxx	rs57491015
NA	1.81E-07	1.11E-04	NA	1.11E-04	2.06E-07	1.11E-04	+x+xxx	rs145826624
NA	1.80E-07	1.11E-04	NA	1.11E-04	2.05E-07	1.11E-04	+x+xxx	rs115453411
NA	6.42E-07	2.43E-04	NA	2.43E-04	7.23E-07	2.43E-04	+x+xxx	rs77086855
NA	2.28E-06	4.90E-07	NA	4.90E-07	2.54E-06	4.90E-07	+x+x+x	rs16953145
NA	4.05E-06	1.06E-06	NA	1.06E-06	4.48E-06	1.06E-06	+x+x+x	rs16953148
NA	6.01E-06	2.39E-06	NA	2.39E-06	6.63E-06	2.39E-06	+x+x+x	rs61326721
NA	3.72E-06	1.38E-05	NA	1.38E-05	4.12E-06	1.38E-05	+x+xxx	rs984432
NA	3.69E-06	1.38E-05	NA	1.38E-05	4.09E-06	1.38E-05	+x+xxx	rs60090586
NA	4.51E-06	1.05E-05	NA	1.05E-05	4.98E-06	1.05E-05	+x+xxx	rs41515846
NA	9.64E-06	3.78E-06	NA	3.78E-06	1.06E-05	3.78E-06	+xxx+x	rs116654103
NA	9.31E-06	3.50E-06	NA	3.50E-06	1.02E-05	3.50E-06	+xxx+x	rs150538526
2.39E-01	2.77E-01	6.56E-02	8.46E-06	6.56E-02	1.16E-02	6.56E-02	-++++	rs8109054
2.61E-01	3.11E-01	6.03E-02	8.10E-06	6.03E-02	9.69E-03	6.03E-02	-++++	rs8108904
2.25E-01	3.43E-01	5.21E-02	5.99E-06	5.21E-02	7.27E-03	5.21E-02	-++++	rs35747850
1.88E-01	3.26E-01	1.30E-01	4.22E-06	1.30E-01	1.53E-02	1.30E-01	+++++	chr19:49083629:D
2.57E-01	3.22E-01	9.42E-02	2.11E-06	9.42E-02	4.52E-03	9.42E-02	-++++	rs11878647
2.58E-01	2.97E-01	9.48E-02	1.57E-06	9.48E-02	4.72E-03	9.48E-02	-++++	rs11878722
2.59E-01	5.96E-01	2.44E-02	1.77E-06	2.44E-02	5.48E-04	2.44E-02	+++++	rs61416619
3.24E-01	9.34E-01	7.68E-03	6.39E-06	7.68E-03	3.77E-05	7.68E-03	+++x+	chr19:49087071:D
2.31E-01	1.92E-02	2.99E-01	2.02E-06	2.99E-01	3.36E-02	2.99E-01	-++++	rs73053552
1.84E-01	3.43E-02	2.88E-01	1.14E-06	2.88E-01	1.47E-02	2.88E-01	-++x+	rs73053558

2.43E-01	9.12E-01	4.58E-04	9.11E-06	4.58E-04	1.27E-03	4.58E-04	+++	chr19:50860233:D
1.45E-01	6.41E-01	1.18E-05	5.38E-06	1.18E-05	2.58E-05	1.18E-05	+++	rs2695121
1.57E-01	4.88E-01	7.65E-05	5.73E-06	7.65E-05	4.76E-05	7.65E-05	+++	rs2248949
NA	9.77E-06	3.64E-04	NA	3.64E-04	1.07E-05	3.64E-04	+x+x+x	rs6037613
NA	9.95E-06	3.72E-04	NA	3.72E-04	1.09E-05	3.72E-04	+x+x+x	rs6115932
NA	9.95E-06	3.73E-04	NA	3.73E-04	1.09E-05	3.73E-04	+x+x+x	rs7343859
NA	9.95E-06	3.73E-04	NA	3.73E-04	1.09E-05	3.73E-04	+x+x+x	rs6051913
NA	8.24E-06	3.14E-04	NA	3.14E-04	9.06E-06	3.14E-04	+x+x+x	rs6051919
NA	6.49E-06	2.87E-04	NA	2.87E-04	7.15E-06	2.87E-04	+x+x+x	rs6107305
1.64E-01	4.93E-01	1.34E-05	2.16E-06	1.34E-05	6.86E-05	1.34E-05	-+xx	rs6131652
2.59E-02	1.55E-02	2.21E-06	7.52E-05	2.21E-06	4.97E-06	2.21E-06	+++	rs28650065
NA	3.30E-06	1.85E-05	NA	1.85E-05	3.66E-06	1.85E-05	+x+xxx	chr20:21706604:I
NA	6.61E-06	7.45E-07	NA	7.45E-07	7.29E-06	7.45E-07	+x+xxx	rs114269992
NA	7.06E-06	7.94E-07	NA	7.94E-07	7.78E-06	7.94E-07	+x+xxx	rs114620529
NA	7.48E-06	7.30E-07	NA	7.30E-07	8.24E-06	7.30E-07	+x+xxx	rs116629084
NA	3.28E-06	2.63E-07	NA	2.63E-07	3.63E-06	2.63E-07	+x+xxx	rs115384512
NA	3.25E-06	2.59E-07	NA	2.59E-07	3.60E-06	2.59E-07	+x+xxx	rs147641662
NA	3.21E-06	2.55E-07	NA	2.55E-07	3.56E-06	2.55E-07	+x+xxx	rs191783144
NA	3.20E-06	2.54E-07	NA	2.54E-07	3.55E-06	2.54E-07	+x+xxx	rs146806338
NA	3.40E-06	2.60E-07	NA	2.60E-07	3.77E-06	2.60E-07	+x+xxx	rs114828727
NA	3.58E-06	2.54E-07	NA	2.54E-07	3.97E-06	2.54E-07	+x+xxx	rs114128002
NA	8.73E-06	6.29E-07	NA	6.29E-07	9.60E-06	6.29E-07	+x+xxx	rs115342711
NA	8.73E-06	6.29E-07	NA	6.29E-07	9.60E-06	6.29E-07	+x+xxx	chr20:24955422:I
NA	8.50E-06	5.53E-07	NA	5.53E-07	9.35E-06	5.53E-07	+x+xxx	rs115764440
NA	9.01E-06	5.08E-07	NA	5.08E-07	9.90E-06	5.08E-07	+x+xxx	rs116068335
NA	6.41E-06	4.06E-07	NA	4.06E-07	7.07E-06	4.06E-07	+x+xxx	rs114637142
NA	8.80E-06	6.08E-07	NA	6.08E-07	9.68E-06	6.08E-07	+x+xxx	rs114071901
NA	9.22E-06	6.64E-07	NA	6.64E-07	1.01E-05	6.64E-07	+x+xxx	rs113232742
NA	9.33E-06	6.79E-07	NA	6.79E-07	1.03E-05	6.79E-07	+x+xxx	rs114199928
NA	9.73E-06	7.20E-07	NA	7.20E-07	1.07E-05	7.20E-07	+x+xxx	rs114836364
NA	4.03E-06	5.48E-07	NA	5.48E-07	4.47E-06	5.48E-07	+x+xxx	rs116669368
NA	3.86E-06	1.12E-06	NA	1.12E-06	4.27E-06	1.12E-06	+x+xxx	rs145379934
2.87E-01	7.25E-06	1.09E-01	4.61E-01	1.09E-01	1.48E-01	1.09E-01	+++	rs6022230
2.26E-01	3.27E-06	1.10E-01	4.11E-01	1.10E-01	1.61E-01	1.10E-01	+++	rs6013609
2.34E-01	2.41E-06	1.08E-01	4.07E-01	1.08E-01	1.57E-01	1.08E-01	+++	rs6022233
2.28E-01	1.43E-06	9.72E-02	3.97E-01	9.72E-02	1.49E-01	9.72E-02	+++	rs964886
2.07E-01	5.44E-06	1.24E-01	3.98E-01	1.24E-01	1.89E-01	1.24E-01	+++	rs6022236
1.84E-01	2.39E-06	6.95E-02	4.26E-01	6.95E-02	7.14E-02	6.95E-02	+++	rs6022237
4.36E-01	6.99E-06	2.13E-02	1.32E-01	2.13E-02	5.78E-02	2.13E-02	+++	rs6014553
6.97E-01	8.16E-06	1.87E-02	1.29E-01	1.87E-02	7.31E-02	1.87E-02	+++	rs6014555
9.01E-01	7.98E-06	5.30E-03	9.64E-01	5.30E-03	5.77E-04	5.30E-03	++++	rs2427339
NA	9.08E-06	1.20E-05	NA	1.20E-05	9.98E-06	1.20E-05	+x+xxx	rs78068107
NA	5.36E-06	6.49E-06	NA	6.49E-06	5.92E-06	6.49E-06	+x+xxx	rs78108129
4.52E-01	8.86E-06	3.80E-01	1.01E-01	3.80E-01	1.65E-01	3.80E-01	-++	rs2833695
6.39E-01	6.48E-07	1.88E-01	1.12E-01	1.88E-01	1.49E-01	1.88E-01	-++	rs2833696
6.46E-01	8.03E-06	7.53E-01	2.09E-02	7.53E-01	3.82E-01	7.53E-01	-++	rs2833702

4.98E-01	9.00E-06	8.42E-01	1.20E-02	8.42E-01	5.14E-01	8.42E-01	-++++	rs2833703
5.00E-01	8.56E-06	8.44E-01	1.19E-02	8.44E-01	5.11E-01	8.44E-01	-++++	rs11088207
5.02E-01	8.01E-06	8.48E-01	1.19E-02	8.48E-01	5.08E-01	8.48E-01	-++++	rs2833704
5.03E-01	7.71E-06	8.51E-01	1.18E-02	8.51E-01	5.06E-01	8.51E-01	-++++	rs11088208
5.04E-01	6.93E-06	8.46E-01	1.17E-02	8.46E-01	4.99E-01	8.46E-01	-++++	rs12483370
4.99E-01	9.24E-06	8.59E-01	1.45E-02	8.59E-01	4.98E-01	8.59E-01	-++++	rs2833705
5.53E-01	4.32E-06	8.21E-01	1.25E-02	8.21E-01	4.57E-01	8.21E-01	-++++	rs12483543
5.46E-01	5.41E-06	8.16E-01	1.25E-02	8.16E-01	4.74E-01	8.16E-01	-++++	rs11088209
5.46E-01	5.39E-06	8.17E-01	1.25E-02	8.17E-01	4.74E-01	8.17E-01	-++++	rs11088210
5.46E-01	5.35E-06	8.17E-01	1.25E-02	8.17E-01	4.73E-01	8.17E-01	-++++	rs11088211
5.50E-01	4.95E-06	8.18E-01	1.25E-02	8.18E-01	4.67E-01	8.18E-01	-++++	rs2833707
5.52E-01	4.76E-06	8.19E-01	1.25E-02	8.19E-01	4.64E-01	8.19E-01	-++++	rs2833708
5.52E-01	4.68E-06	8.19E-01	1.25E-02	8.19E-01	4.63E-01	8.19E-01	-++++	rs2833709
5.52E-01	4.65E-06	8.19E-01	1.24E-02	8.19E-01	4.62E-01	8.19E-01	-++++	rs12482617
5.52E-01	4.66E-06	8.19E-01	1.24E-02	8.19E-01	4.62E-01	8.19E-01	-++++	rs12482514
5.52E-01	4.65E-06	8.20E-01	1.24E-02	8.20E-01	4.62E-01	8.20E-01	-++++	rs2833713
5.52E-01	4.64E-06	8.20E-01	1.24E-02	8.20E-01	4.62E-01	8.20E-01	-++++	rs77148260
5.52E-01	4.64E-06	8.20E-01	1.24E-02	8.20E-01	4.62E-01	8.20E-01	-++++	rs113442259
5.52E-01	4.64E-06	8.20E-01	1.24E-02	8.20E-01	4.62E-01	8.20E-01	-++++	rs113213508
5.19E-01	3.79E-06	7.93E-01	5.28E-03	7.93E-01	4.50E-01	7.93E-01	-+++x	rs112075059
5.52E-01	4.64E-06	8.20E-01	1.24E-02	8.20E-01	4.62E-01	8.20E-01	-++++	rs12483027
5.52E-01	4.63E-06	8.20E-01	1.24E-02	8.20E-01	4.62E-01	8.20E-01	-++++	rs12483069
5.52E-01	4.62E-06	8.20E-01	1.24E-02	8.20E-01	4.62E-01	8.20E-01	-++++	rs2833714
5.53E-01	4.59E-06	8.20E-01	1.24E-02	8.20E-01	4.61E-01	8.20E-01	-++++	rs78098177
5.53E-01	4.47E-06	8.06E-01	1.33E-02	8.06E-01	4.46E-01	8.06E-01	-++++	rs2833718
5.53E-01	4.48E-06	8.21E-01	1.24E-02	8.21E-01	4.60E-01	8.21E-01	-++++	rs8128985
5.55E-01	4.55E-06	8.20E-01	1.21E-02	8.20E-01	4.65E-01	8.20E-01	-++++	rs78794822
4.85E-01	9.91E-06	9.88E-01	1.12E-02	9.88E-01	5.56E-01	9.88E-01	-++++	rs112412785
5.45E-01	2.39E-06	7.49E-01	5.17E-03	7.49E-01	3.78E-01	7.49E-01	-+++x	rs113561184
5.53E-01	3.42E-06	6.96E-01	7.20E-03	6.96E-01	3.60E-01	6.96E-01	-+++x	rs117578633
5.85E-01	7.95E-06	9.62E-01	6.44E-03	9.62E-01	6.41E-01	9.62E-01	-++++	rs111282827
4.86E-01	9.96E-06	9.87E-01	1.12E-02	9.87E-01	5.57E-01	9.87E-01	-++++	rs79779898
6.14E-01	9.47E-06	6.21E-01	1.72E-02	6.21E-01	3.15E-01	6.21E-01	-+++x	chr21:33569654:D
5.06E-01	9.62E-06	7.43E-01	3.52E-02	7.43E-01	2.69E-01	7.43E-01	-++++	rs2249432
4.99E-01	9.81E-06	7.33E-01	3.60E-02	7.33E-01	2.66E-01	7.33E-01	-++++	rs8131083
3.19E-02	4.04E-03	6.64E-05	3.66E-04	6.64E-05	9.52E-06	6.64E-05	-----	rs16989309
NA	8.72E-07	3.90E-05	NA	3.90E-05	9.79E-07	3.90E-05	+x+x-x	rs111414152
NA	7.35E-08	1.86E-05	NA	1.86E-05	8.44E-08	1.86E-05	+x+xxx	rs116214529
NA	7.27E-08	1.84E-05	NA	1.84E-05	8.34E-08	1.84E-05	+x+xxx	rs186825689
NA	1.00E-06	1.90E-04	NA	1.90E-04	1.12E-06	1.90E-04	+x+xxx	rs115728891
NA	1.36E-06	2.40E-04	NA	2.40E-04	1.52E-06	2.40E-04	+x+xxx	rs115266927
NA	1.43E-06	2.49E-04	NA	2.49E-04	1.60E-06	2.49E-04	+x+xxx	rs79229123
NA	1.35E-06	2.49E-04	NA	2.49E-04	1.51E-06	2.49E-04	+x+xxx	rs185614941
7.45E-01	NA	1.22E-04	6.80E-08	1.22E-04	8.36E-08	1.22E-04	x+x+x-	chr22:26917069:I
2.09E-01	8.48E-02	6.99E-05	9.23E-08	6.99E-05	1.03E-06	6.99E-05	+++++	rs4149485

eTable 2. Pleiotropy tests between cannabis dependence and five psychiatric disorders in AAs and EAs

Disorder	CAD EA		CAD AA	
	Associated SNPs (%)	p-value	Associated SNPs (%)	p-value
MDD ^a	1.7	2.39E-5	0.4	0.75
SCZ ^b	0.2	0.37	0.4	0.76
BPD ^c	0.5	0.72	0.01	0.99
ASD ^d	2.7E-4	0.99	0.3	0.72
ADHD ^e	0	NA	0	NA

^amajor depressive disorder

^bschizophrenia

^cbipolar affective disorder

^dautism spectrum disorder

^eattention deficit hyperactivity disorder