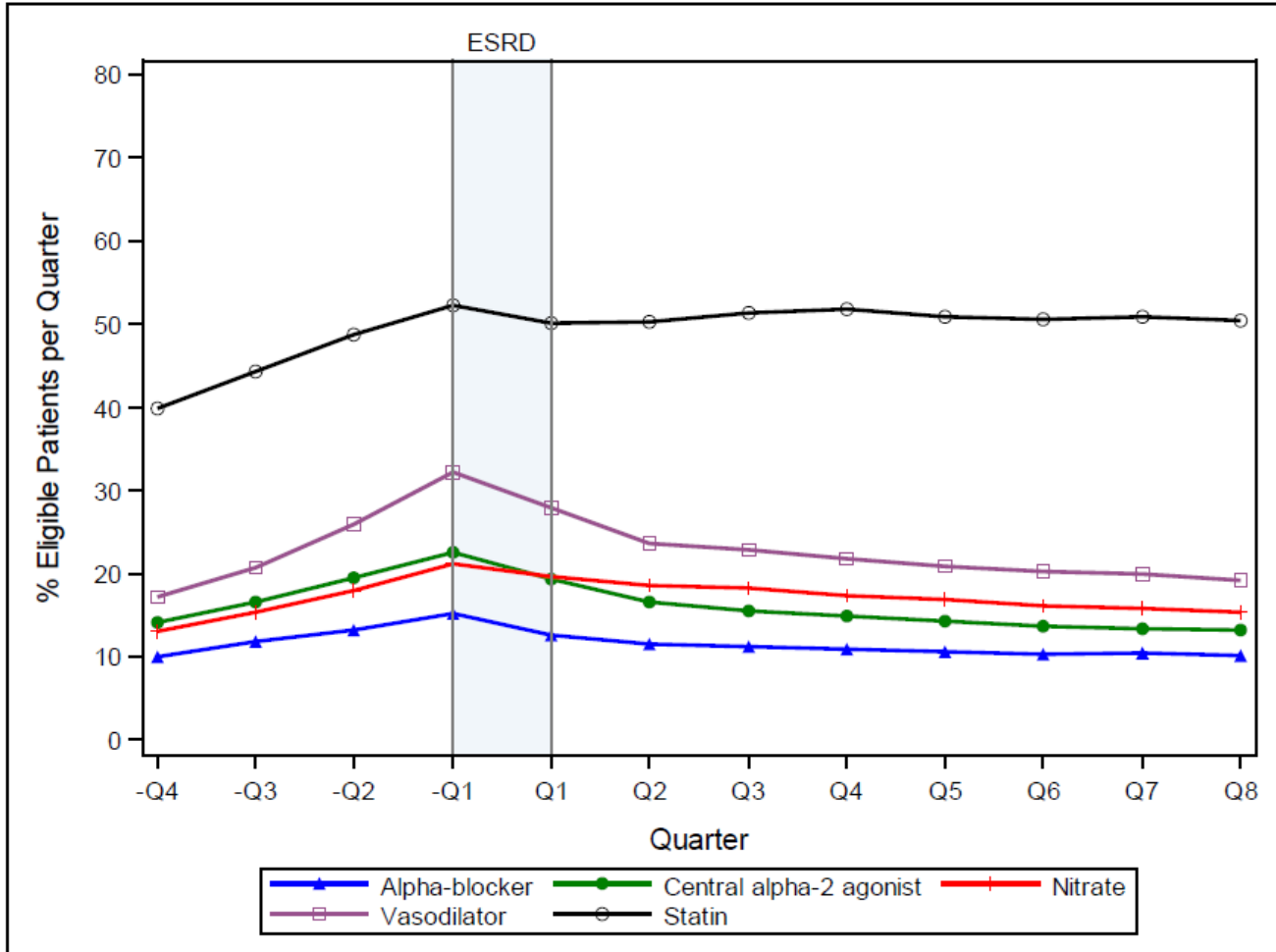
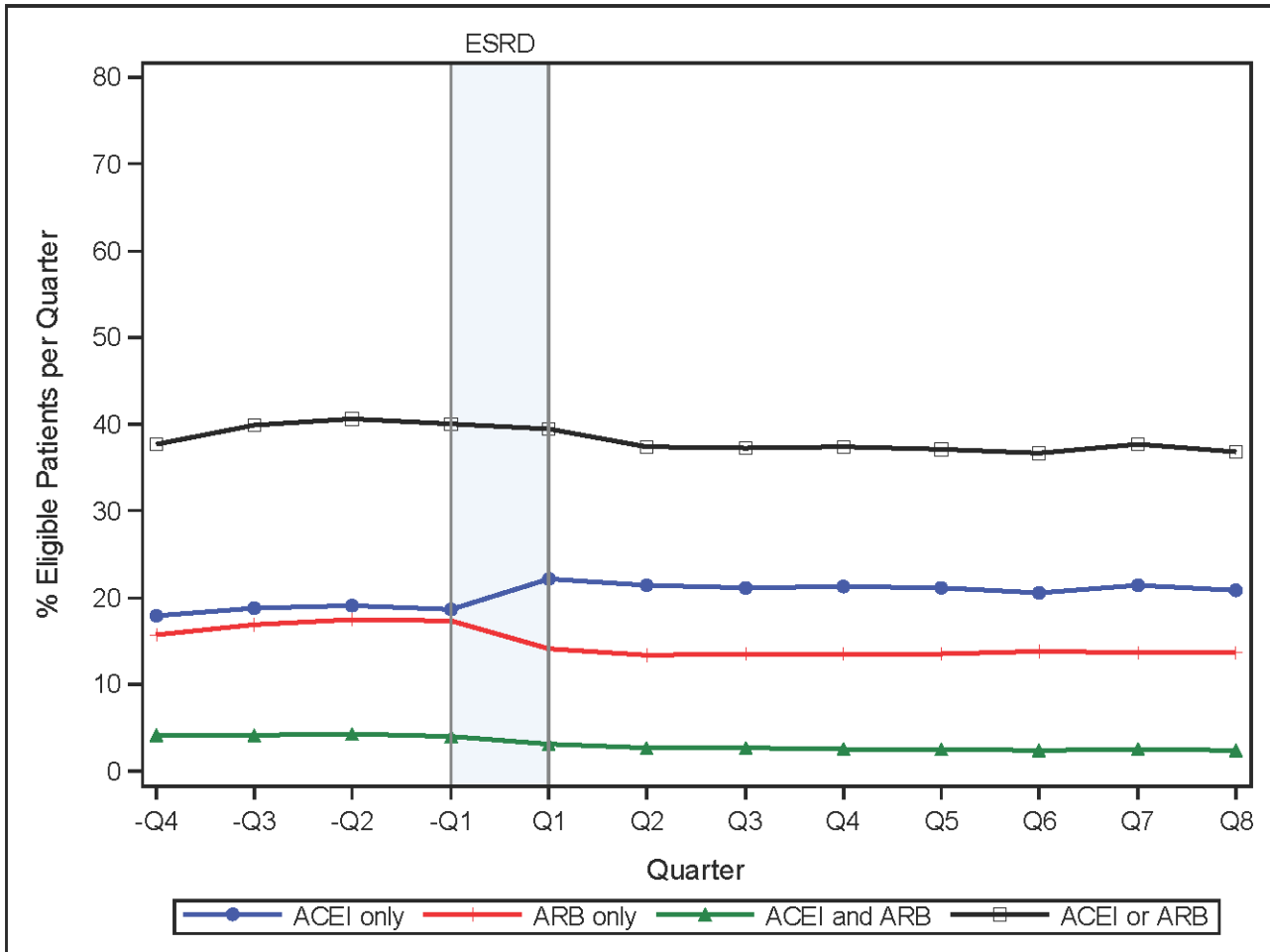


SUPPLEMENTAL MATERIAL

**Supplemental Figure 1:** Proportion of eligible patients within each quarter with a prescription filled for the specified antihypertension agents and statins in the quarters prior to and after incident end-stage renal disease (ESRD) in patients age  $\geq 67$  years.



**Supplemental Figure 2:** Proportion of eligible patients within each quarter with a prescription filled for angiotensin converting enzyme inhibitors (ACEI) or angiotensin II receptor blockers (ARB), ACEI only, ARB only, or ACEI and ARB in the quarters prior to and after incident end-stage renal disease (ESRD) in patients age  $\geq 67$  years.



**Supplemental Figure 3:** Proportion of eligible patients within each quarter with a prescription filled for any diuretic, loop diuretics and thiazide diuretics in the quarters prior to and after incident end-stage renal disease (ESRD) in patients age  $\geq 67$  years.

