

Baicalin promotes hippocampal neurogenesis via SGK1- and FKBP5-mediated glucocorticoid receptor phosphorylation in a neuroendocrine mouse model of anxiety/depression

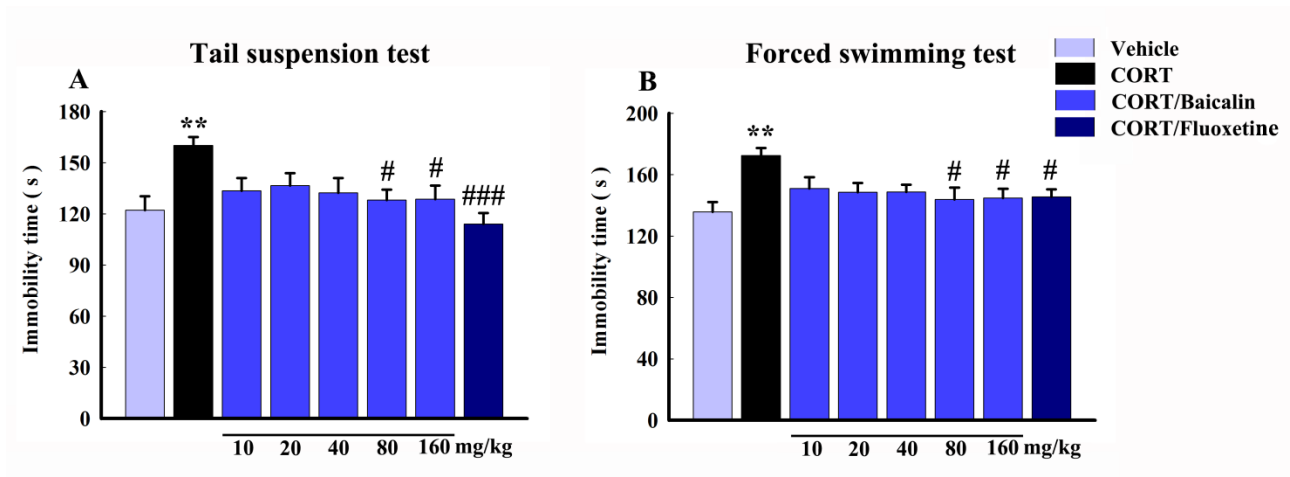
Kuo Zhang^a, Xing Pan^a, Fang Wang^a, Jie Ma^a, Guangyue Su^b, Yingxu Dong^a, Jingyu Yang^{a,*},
Chunfu Wu^{a,**}

^a *Department of Pharmacology, Shenyang Pharmaceutical University, 110016, Shenyang, PR China*

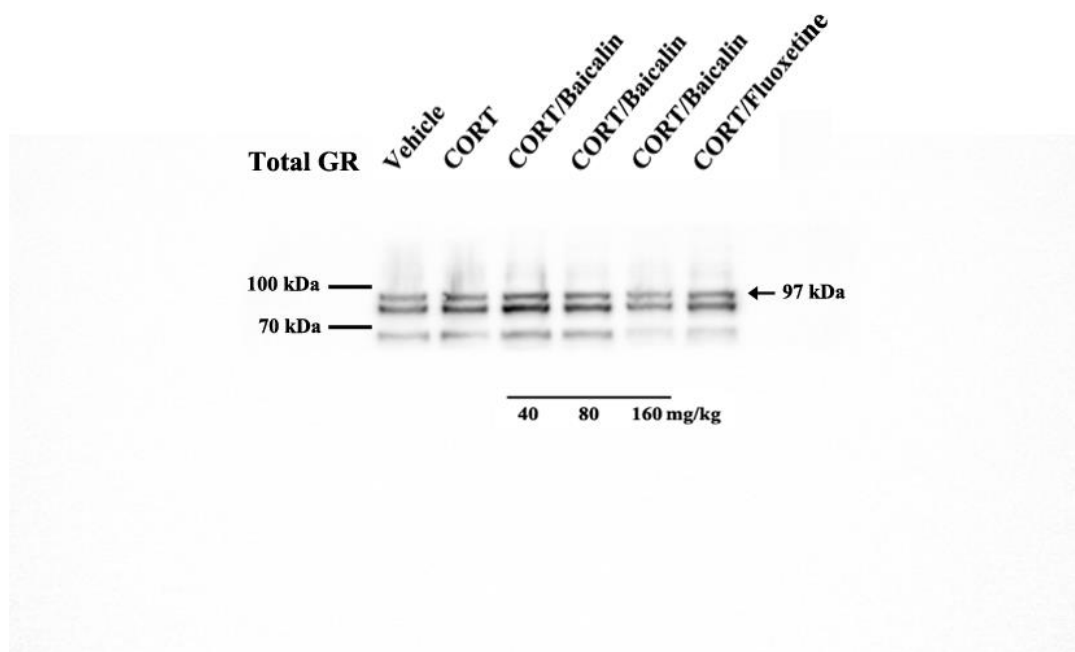
^b *Department of School of Functional Food And Wine, Shenyang Pharmaceutical University, 110016, Shenyang, PR China*

* Corresponding author at: Department of Pharmacology, Shenyang Pharmaceutical University, Box 31, 103 Wenhua Road, 110016, Shenyang, PR China. Tel. & Fax: +86 24 23986339. E-mail address: yangjingyu2006@gmail.com

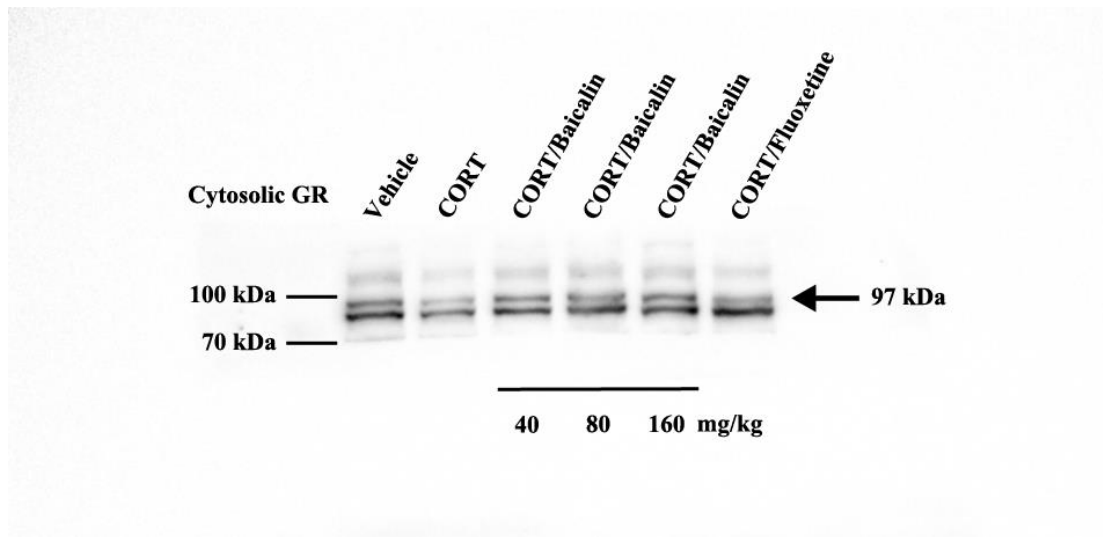
** Corresponding author at: Department of Pharmacology, Shenyang Pharmaceutical University, Box 31, 103 Wenhua Road, 110016, Shenyang, PR China. Tel. & Fax: +86 24 23986339. E-mail address: wucf@syphu.edu.cn



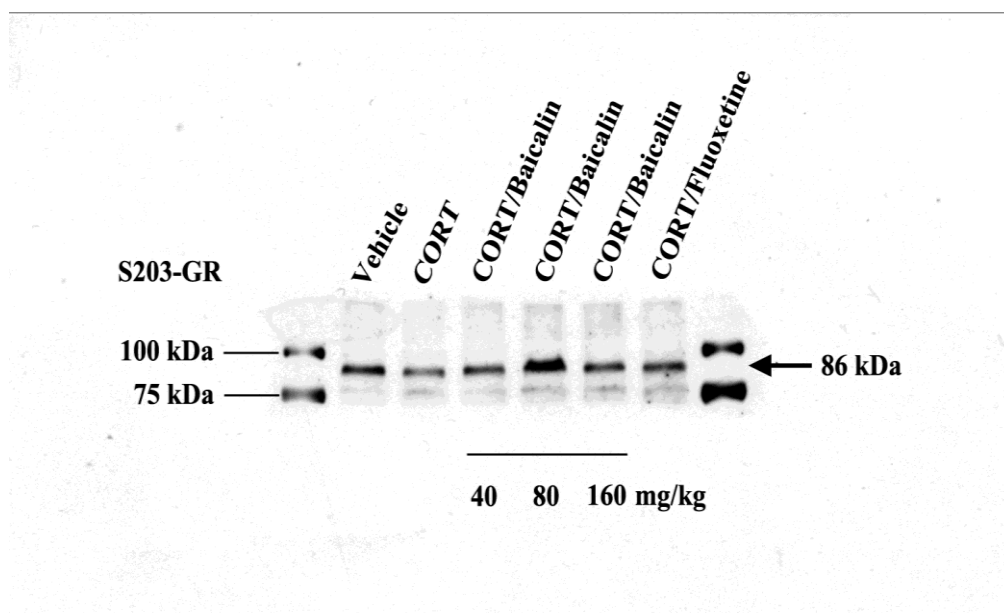
Supplementary Fig. S1 Effects of baicalin (40, 80 and 160 mg/kg) in the CORT model of anxiety/depression on immobility time in the tail suspension test (A) and the forced swimming test (B). Data are expressed as means \pm S.E.M ($n = 12-15$ mice/group). ** $P < 0.01$ vs vehicle. # $P < 0.05$ and ### $P < 0.001$ vs CORT model.



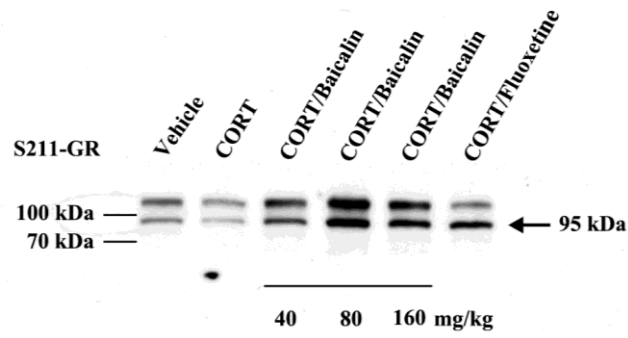
Supplementary Fig. S2 Representative blots of total GR in hippocampus in the CORT model of anxiety/depression



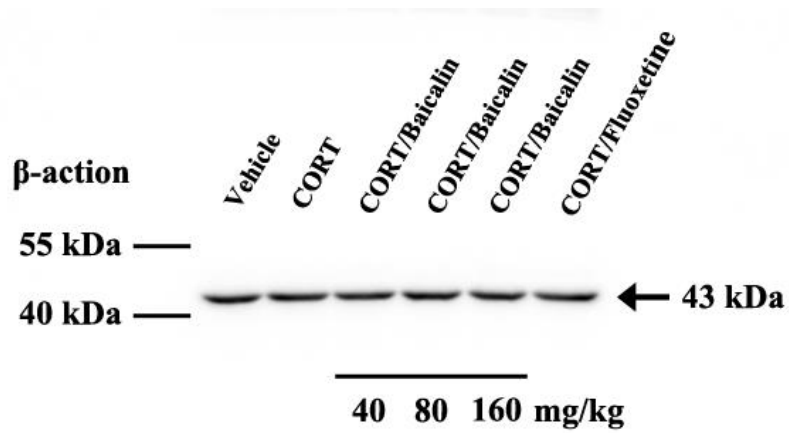
Supplementary Fig. S3 Representative blots of cytosolic GR in hippocampus in the CORT model of anxiety/depression



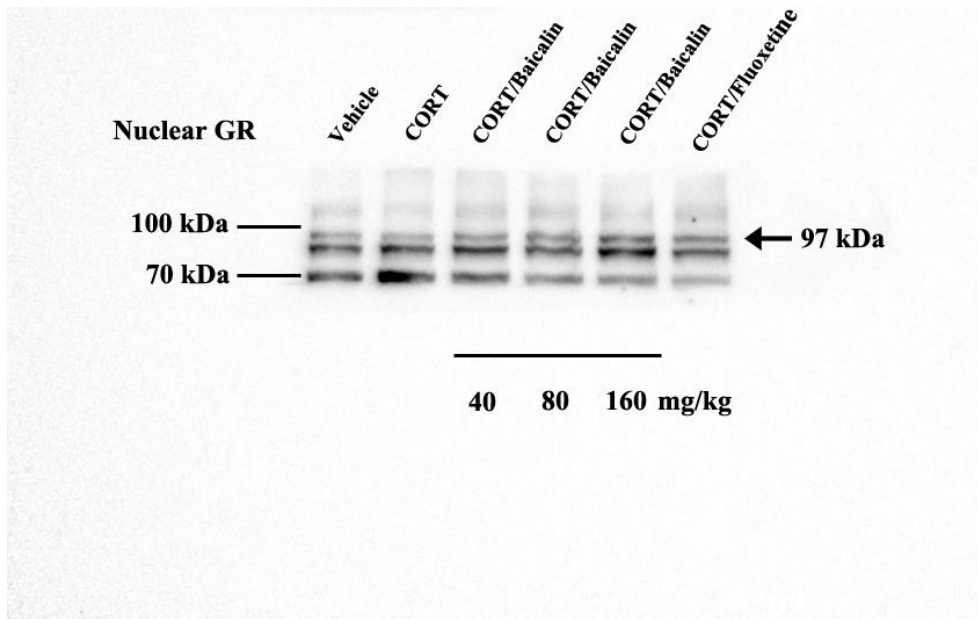
Supplementary Fig. S4 Representative blots of S203-GR in hippocampus in the CORT model of anxiety/depression



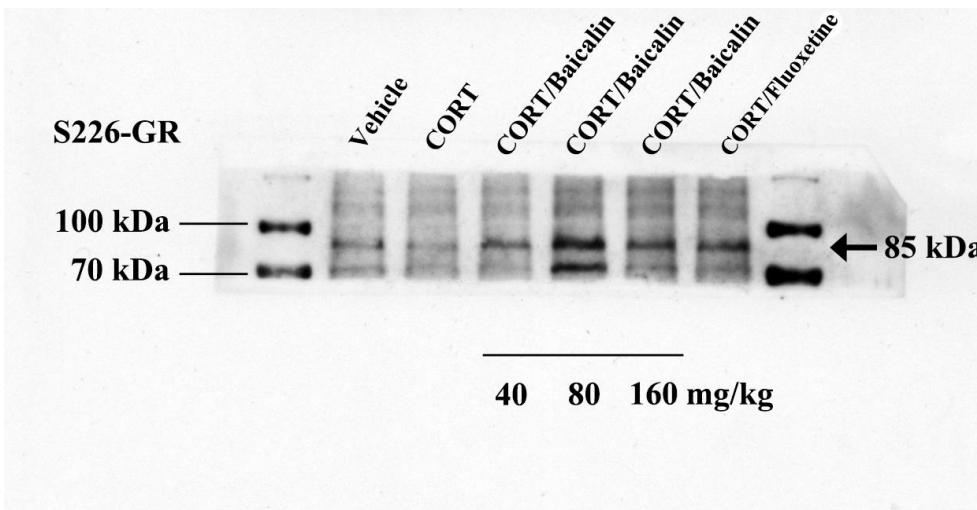
Supplementary Fig. S5 Representative blots of S211-GR in hippocampus in the CORT model of anxiety/depression



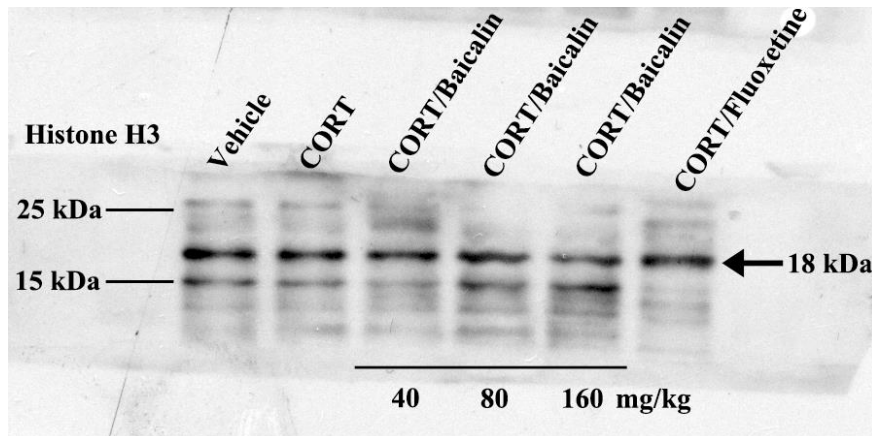
Supplementary Fig. S6 Representative blots of β -action in hippocampus in the CORT model of anxiety/depression



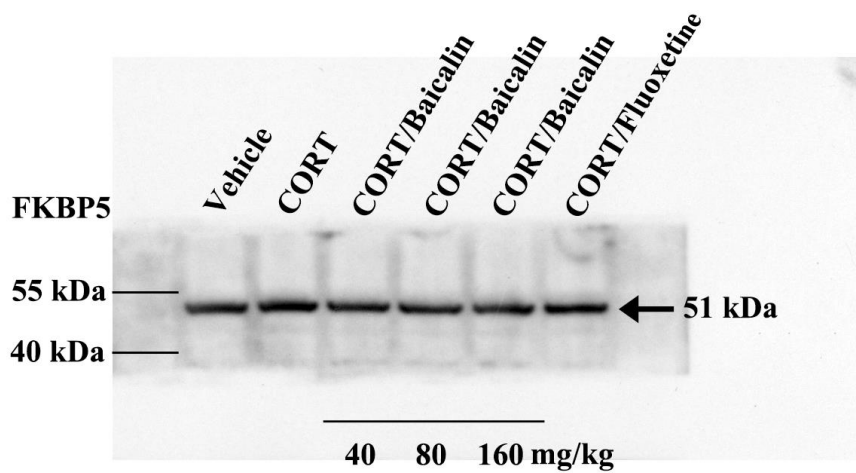
Supplementary Fig. S7 Representative blots of Nuclear GR in hippocampus in the CORT model of anxiety/depression



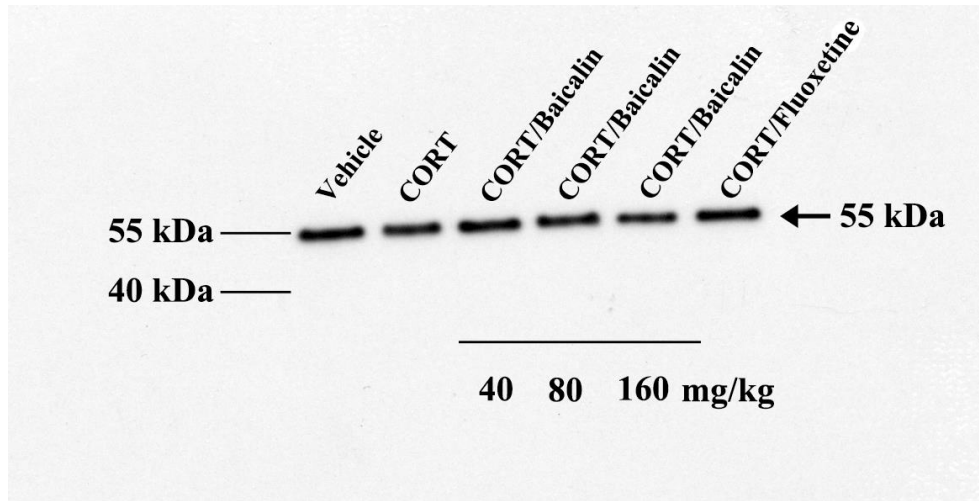
Supplementary Fig. S8 Representative blots of S226-GR in hippocampus in the CORT model of anxiety/depression



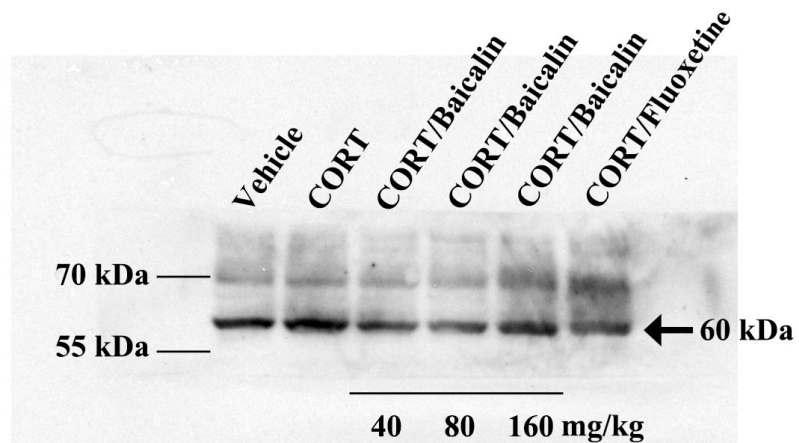
Supplementary Fig. S9 Representative blots of Histone H3 in hippocampus in the CORT model of anxiety/depression



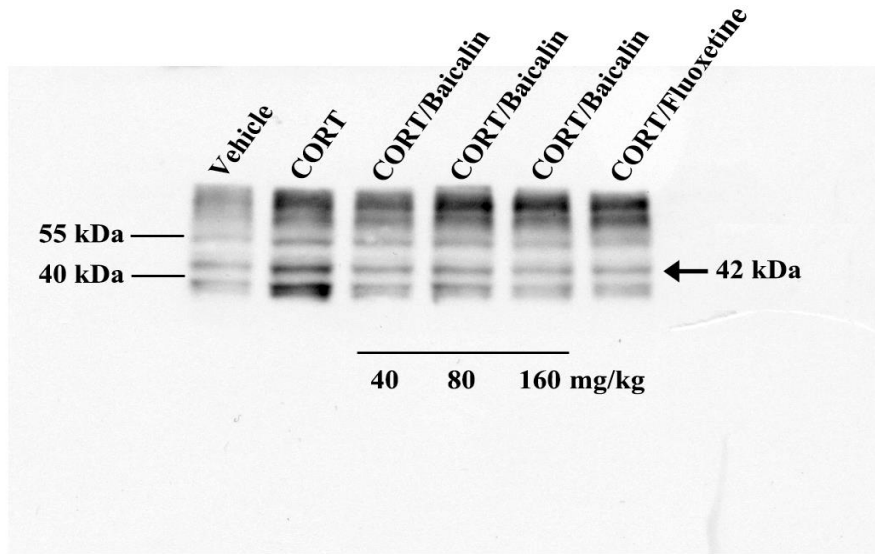
Supplementary Fig. S10 Representative blots of FKBP5 in hippocampus in the CORT model of anxiety/depression



Supplementary Fig. S11 Representative blots of SGK1 in hippocampus in the CORT model of anxiety/depression



Supplementary Fig. S12 Representative blots of S422-SGK1 in hippocampus in the CORT model of anxiety/depression



Supplementary Fig. S13 Representative blots of T256-SGK1 in hippocampus in the CORT model of anxiety/depression