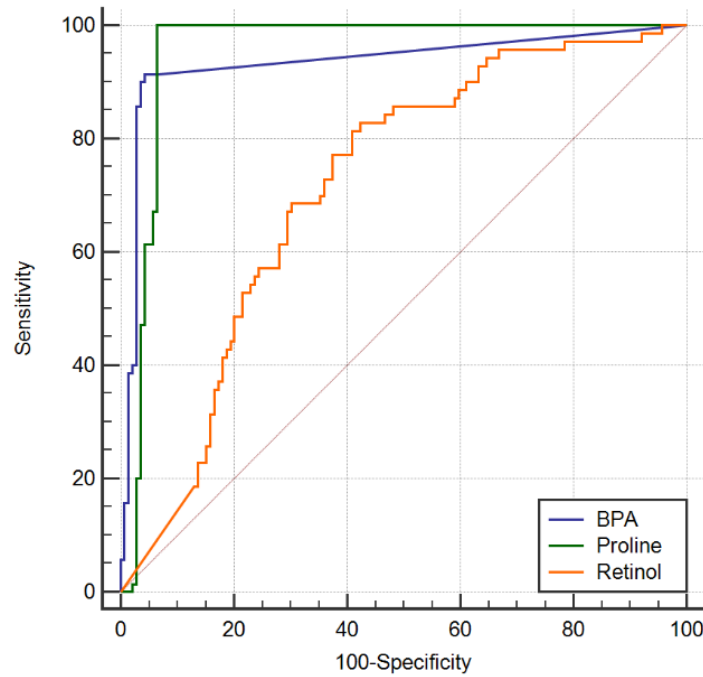


Additional file 2. Classification of the subjects using significant compounds levels.



ROC curves showed how the levels of BPA, retinol and L-proline could classify LCPs from controls.

BPA:

Sensitivity: 91.4%

+Predictive Value: 91.4

Specificity: 95.7%

-Predictive Value: 95.7

Retinol:

Sensitivity: 81.4%

+Predictive Value: 50

Specificity: 59.0%

-Predictive Value: 86.3

Proline:

Sensitivity: 100%

+Predictive Value: 88.6

Specificity: 93.5%

-Predictive Value: 100.0