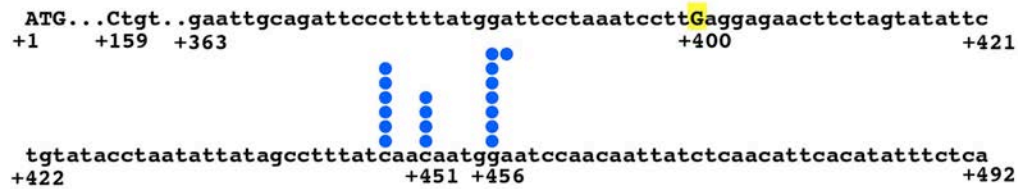
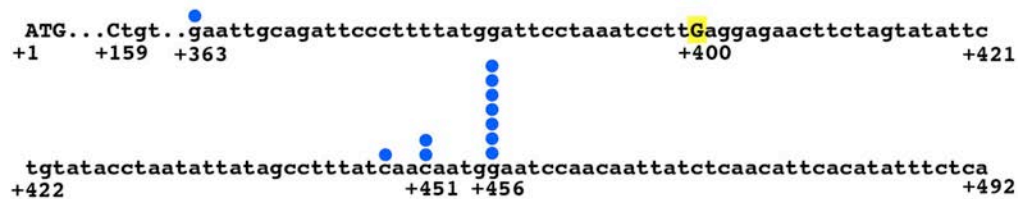


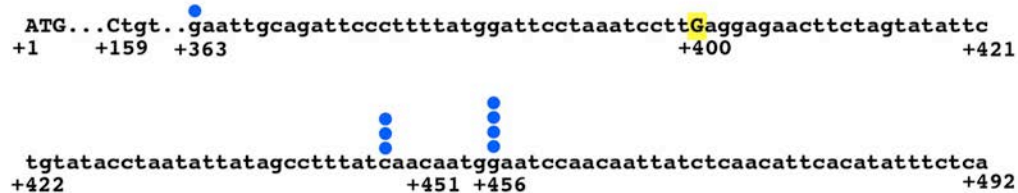
WT



rpb1-E1103G



spt6-1004



rpb1-N1082S

Figure S3. 3' RACE analysis at *lys2-128Δ*. *LYS2* ATG "A" is designated +1. +400 Ty1 Δ TSS observed in 5' RACE is highlighted yellow. Blue dots indicate 3' ends identified by sequencing of cloned cDNAs for particular strains (relevant genotypes noted on right).