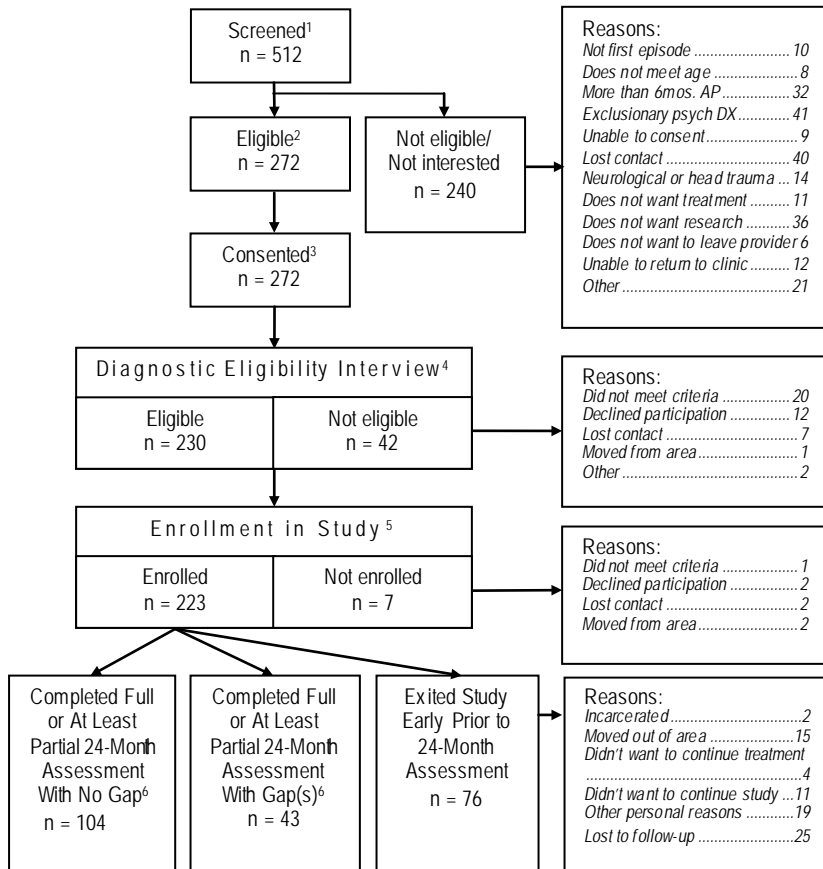
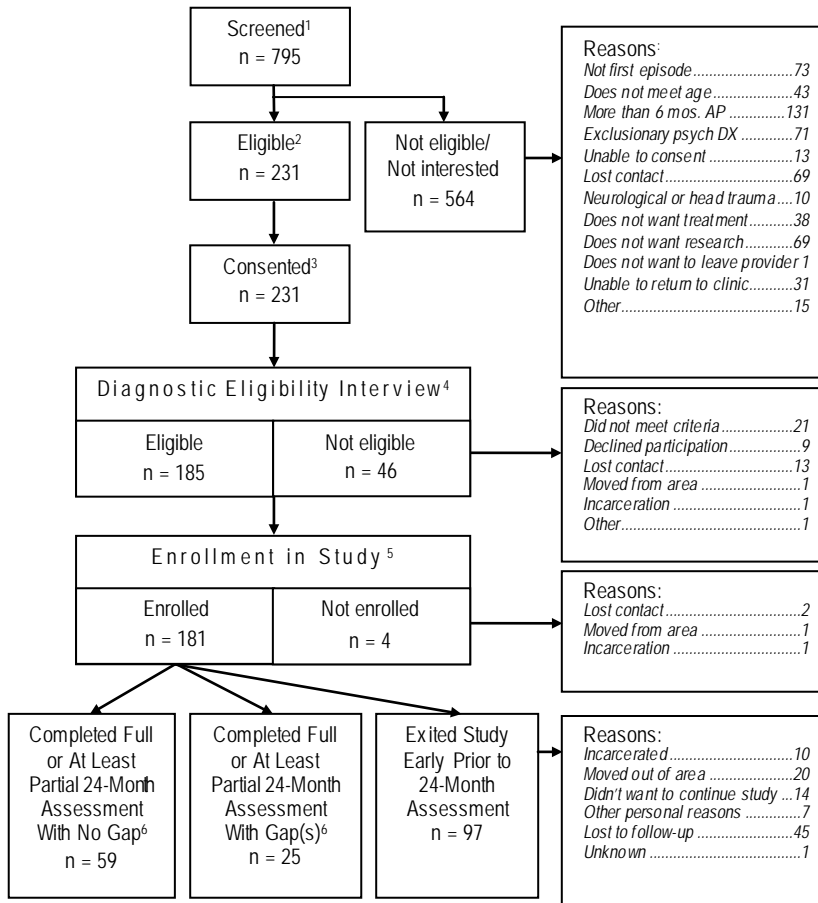


Figure S1. Participant Flow

NAVIGATE SITES



COMMUNITY CARE SITES



¹Potential research subjects contacted by research staff.

²Potential subjects meeting brief (pre-consent) checklist.

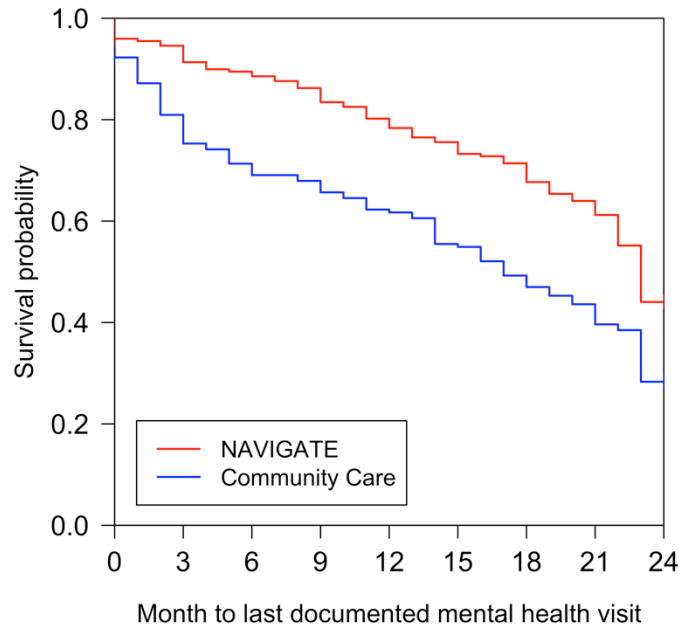
³Potential subjects who signed informed consent and agreed to participate in study if eligibility criteria are met.

⁴After consent, subjects submit to diagnostic eligibility interview during which major inclusion and exclusion criteria are assessed.

⁵For subjects meeting eligibility on the diagnostic interview, enrollment into treatment occurs at the end of the Baseline 2 visit, during which the final eligibility criteria are assessed.

⁶A Gap is defined as missing greater than 3 consecutive scheduled monthly assessment visits. (Note that these subjects returned on or before the Month 24 Assessment)

Figure S2: Time to last documented mental health visit



For treatment, $\chi^2 = 8.41$ and p-value=0.0037 based on the proportional hazards model adjusted for gender, student, and PANSS at baseline and for clustering.

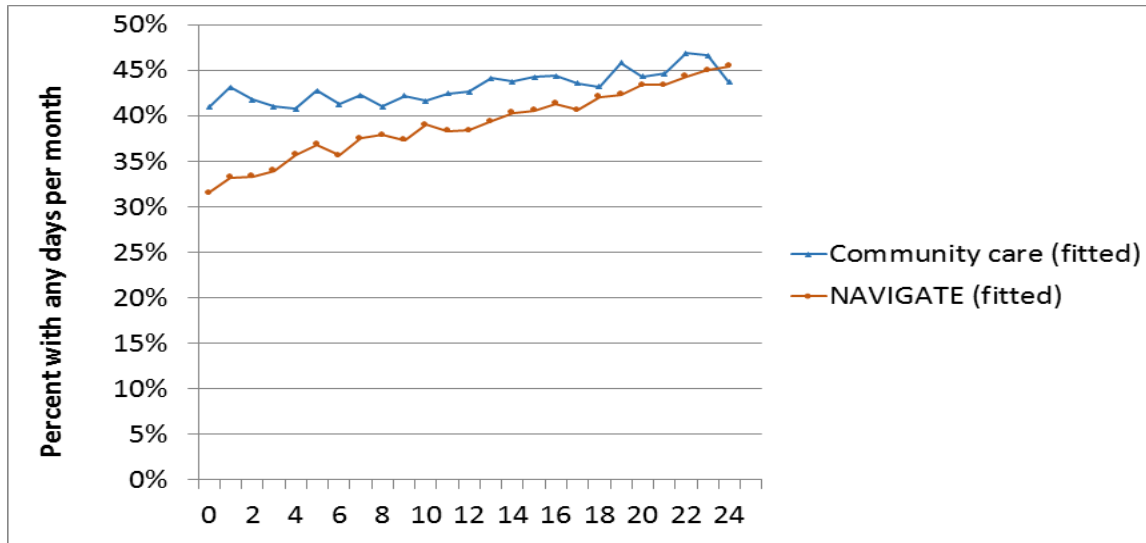
Table S1. The estimated model-based scores over time: means and standard errors

		Baseline		Month 6		Month 12		Month 18		Month 24	
Heinrichs-Carpenter Quality of Life Scale											
Number of Community Care (CC) participants		N=181		N=126		N=109		N=85		N=76	
Number of NAVIGATE (NAV) participants		N=222		N=165		N=148		N=132		N=129	
		Mean	Standard error	Mean	Standard error	Mean	Standard error	Mean	Standard error	Mean	Standard error
Total score ^{a,b,c}	CC	55.13	0.89	60.08	1.12	62.12	1.40	63.70	1.66	65.02	1.88
	NAV	51.25	0.89	59.15	1.00	62.42	1.21	64.93	1.41	67.05	1.59
Subscales											
Interpersonal relations ^{a,b,c}	CC	20.61	0.42	22.36	0.48	23.08	0.58	23.64	0.67	24.11	0.75
	NAV	19.27	0.42	22.11	0.43	23.29	0.50	24.20	0.57	24.96	0.63
Instrumental role ^{a,b,c,e}	CC	7.16	0.47	8.87	0.48	9.58	0.57	10.12	0.66	10.58	0.75
	NAV	4.81	0.44	7.44	0.43	8.53	0.51	9.37	0.58	10.08	0.65
Intrapsychic foundations ^{a,b,c}	CC	21.54	0.35	22.61	0.37	23.06	0.45	23.40	0.52	23.68	0.59
	NAV	20.39	0.34	22.24	0.34	23.00	0.39	23.59	0.44	24.09	0.49
Common objects and activities ^{a,b,c}	CC	6.59	0.15	7.08	0.15	7.28	0.16	7.43	0.18	7.56	0.19
	NAV	6.38	0.15	7.10	0.14	7.40	0.15	7.63	0.15	7.83	0.16
Positive and Negative Syndrome Scale (PANSS)											
Total score ^{a,b,e}	CC	74.69	1.05	69.70	1.16	67.63	1.32	66.04	1.46	64.70	1.60
	NAV	77.54	0.94	70.38	1.05	67.41	1.17	65.14	1.29	63.22	1.40
PANSS Factor scores (30)											
Positive ^{a,b,e}	CC	12.01	0.31	10.75	0.27	10.23	0.29	9.83	0.32	9.49	0.35
	NAV	12.04	0.28	10.67	0.24	10.10	0.25	9.67	0.27	9.30	0.29
Negative ^{a,b,e}	CC	16.35	0.40	15.78	0.39	15.21	0.43	14.64	0.49	14.07	0.59
	NAV	16.83	0.36	16.09	0.36	15.34	0.38	14.60	0.43	13.86	0.50
Disorganized/concrete ^{a,b,e}	CC	7.29	0.22	6.93	0.18	6.78	0.19	6.66	0.21	6.57	0.24
	NAV	8.00	0.21	7.30	0.16	7.01	0.17	6.79	0.19	6.60	0.21
Excited ^{a,b,e}	CC	6.40	0.19	6.28	0.13	6.23	0.15	6.19	0.18	6.16	0.21
	NAV	6.96	0.17	6.49	0.11	6.29	0.12	6.14	0.15	6.02	0.17
Depressed ^{a,b,e}	CC	7.94	0.26	7.49	0.28	7.30	0.31	7.16	0.34	7.04	0.37
	NAV	7.88	0.23	7.05	0.26	6.71	0.29	6.45	0.31	6.22	0.33
Clinical Global Impressions Severity Scale^c											

	CC	3.94	0.03	3.64	0.04	3.51	0.05	3.42	0.06	3.34	0.07
	NAV	4.09	0.03	3.72	0.03	3.56	0.04	3.44	0.05	3.34	0.06
Calgary Depression Scale for Schizophrenia ^{a,c}											
	CC	4.52	0.24	3.93	0.21	3.68	0.24	3.49	0.26	3.33	0.29
	NAV	4.71	0.24	3.72	0.20	3.31	0.21	3.00	0.22	2.73	0.24

CC = Community Care; NAV = NAVIGATE; These means are based on a linear mixed effects model with random intercepts and slopes at the individual and site level with repeated measures. In addition to the interaction of square root of time by treatment, models included co-variables of gender^a; student status^b, PANSS^c, number of prior hospitalizations (0, 1, 2, 3 or more)^d, and/or main treatment effect^e as indicated.

Figure S3. Percent with any work or school days per month



Group by time interaction: $p=.044$

Table S2: Estimates of duration of untreated psychosis (DUP) moderation of treatment effect on Heinrichs-Carpenter Quality of Life and Positive and Negative Syndrome Scale (PANSS) scores with DUP and DUP x time x treatment interaction.

Table 3. Moderation by DUP															
			Estimated mean					Change from baseline at 24 month			Differential change between CC and NAV at 24 month			Treatment by time interaction	
			Baseline	Month 6	Month 12	Month 18	Month 24	Mean	SE	Cohen's d	Mean	SE	Cohen's d	t	p-value
Heinrichs-Carpenter Quality of Life Total score ¹	DUP ≤ 74 weeks	CC	54.88	59.83	61.88	63.45	64.78	9.896	1.934	0.53	10.064	2.782	0.54	3.62	0.0003
		NAV	51.01	60.99	65.12	68.30	70.97	19.959	2.142	1.06					
	DUP > 74 weeks	CC	55.34	60.29	62.33	63.91	65.23	9.896	1.934	0.53	1.307	2.880	0.07	0.45	0.6500
		NAV	51.47	57.07	59.39	61.17	62.67	11.203	2.281	0.60					
PANSS Total score ²	DUP ≤ 74 weeks	CC	71.70	66.79	64.75	63.19	61.87	-9.828	1.387	-0.65	-6.297	2.054	-0.42	-3.07	0.0023
		NAV	74.79	66.73	63.39	60.83	58.67	-6.125	1.514	-1.07					
	DUP > 74 weeks	CC	77.35	72.44	70.40	68.84	67.52	-9.828	1.387	-0.65	-1.953	2.142	-0.13	-0.91	0.3622
		NAV	80.44	74.55	72.11	70.24	68.66	-11.781	1.632	-0.78					

CC=Community Care; NAV=Navigate

¹For Heinrichs-Carpenter Quality of Life total score, model with DUP and the DUP x square root of time x treatment interaction t statistic is -2.98 with p-value 0.0030.

²For PANSS total score, model with DUP and the DUP x square root of time x treatment interaction t statistic is 2.03 with p-value 0.0426.