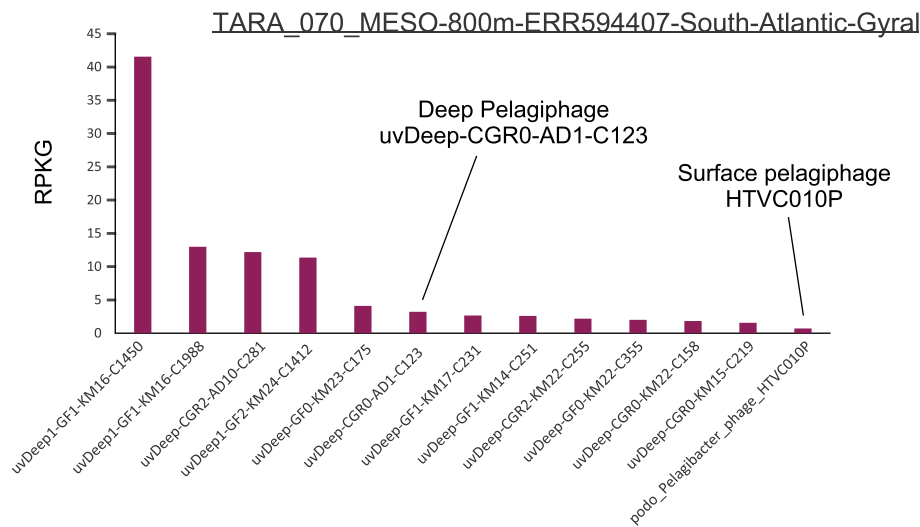
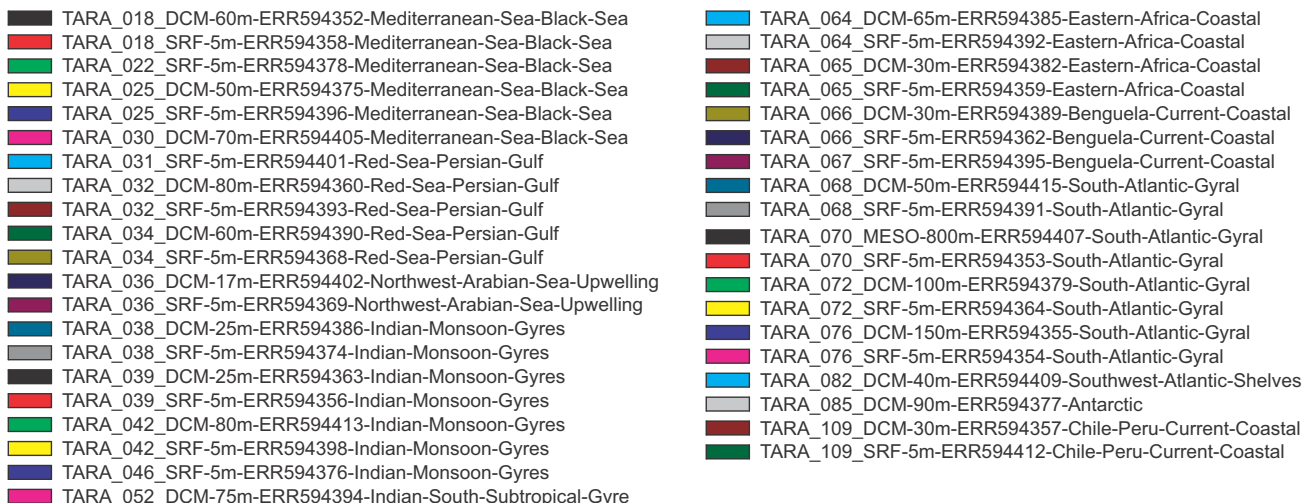
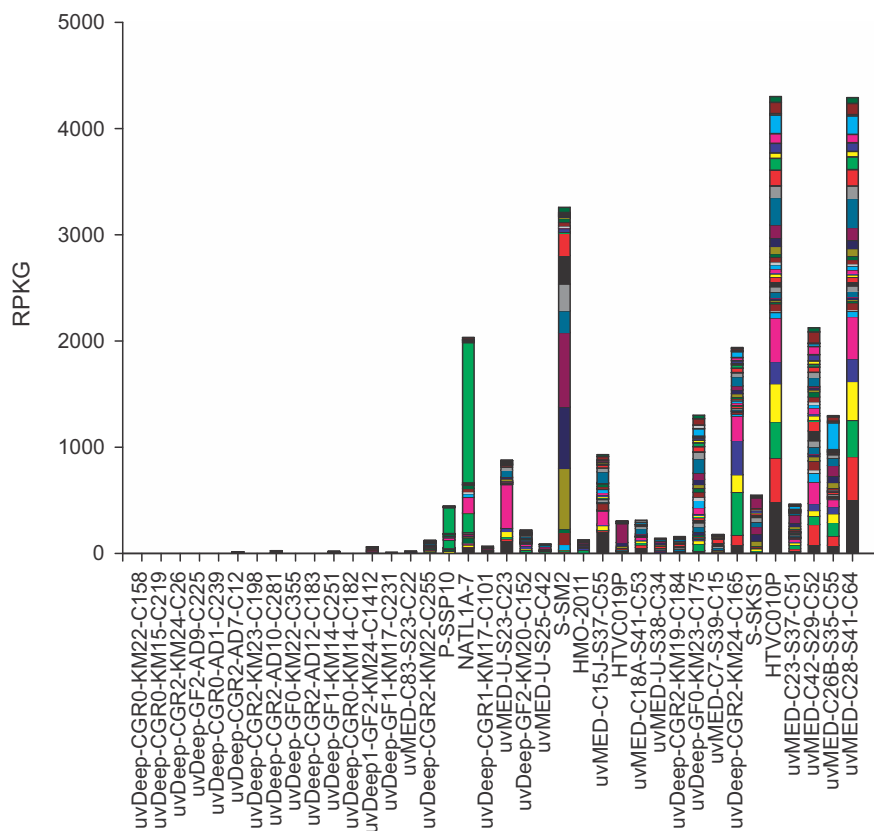


a



b



FigS5. a) Comparative fragment recruitment of top recruiting uvDeep phages (including deep pelagiphage) vs surface pelagiphage HTVC010P versus the Tara Virome mesopelagic dataset from a depth of 800m. b) Comparative recruitment of uvDeep genomes and other references from TARA viromes. The phage genomes are arranged exactly as in Figure 3a