

Supplemental figure legends

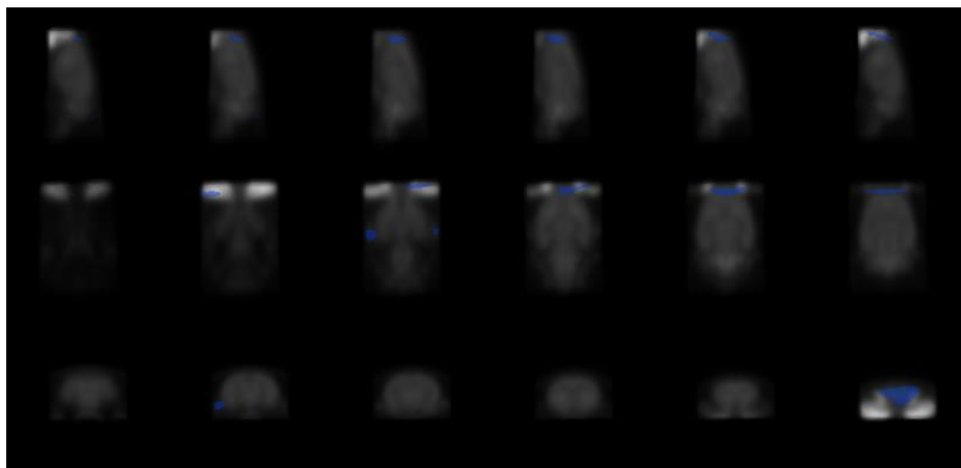
Supplemental figure 1.

Complete section of Figure 2. Brain regions showing decreased (blue) or increased (red) FDG brain uptake. *T*-map was overlaid on the rat brain template.

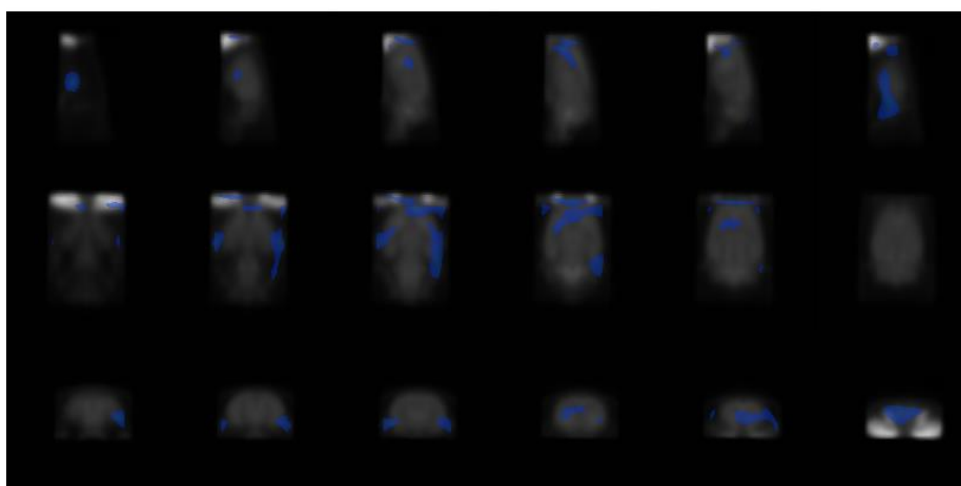
Supplemental figure 2.

The number of choline acetyltransferase (ChAT) immunostained nuclei in the hippocampal CA1 and CA3 regions of the experimental groups. Photographs showing the distribution of ChAT-immunoreactive cells in the hippocampus of the different groups: normal without any treatment (A), cyclophosphamide-treated (B), cyclophosphamide-treated and donepezil administered for intervention (C), doxorubicin-treated (D) and doxorubicin-treated and donepezil administered for intervention (E). Sections were cut coronally at 30 μm .

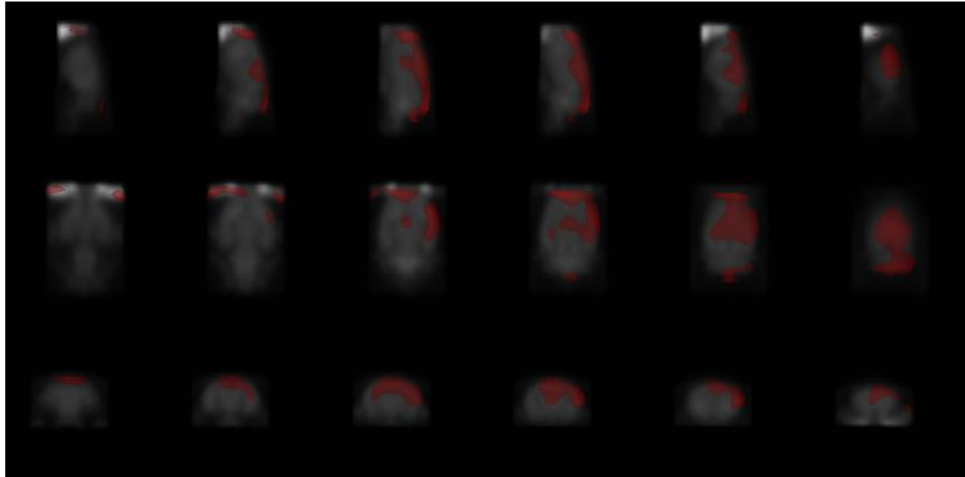
Supplemental Fig 1a



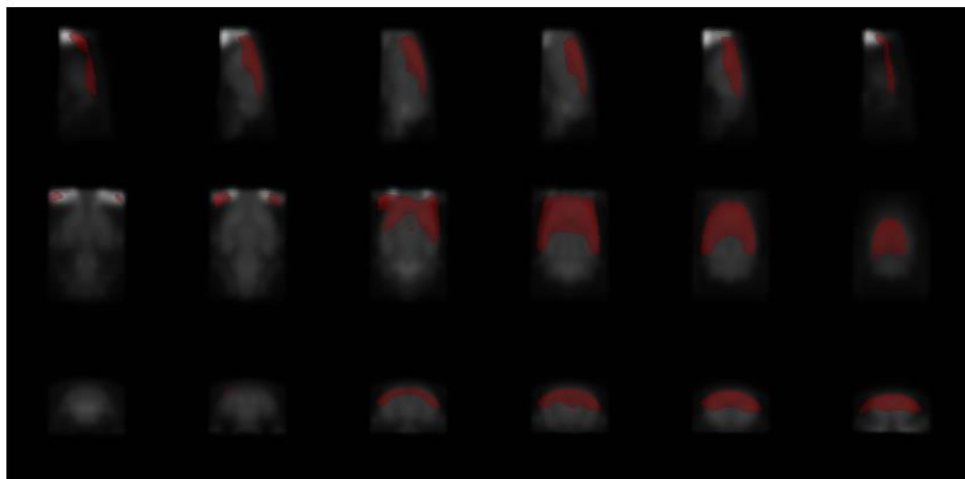
Supplemental Fig 1b



Supplemental Fig 1c

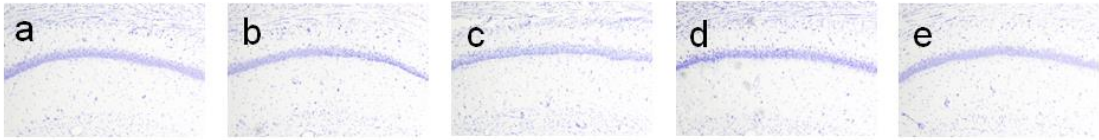


Supplemental Fig 1d



Supplemental Fig 2

CA1



CA3

