

Online Resource 1

Title: Detection and Localization of *Wolbachia* in *Thrips palmi* Karny (Thysanoptera: Thripidae).

Journal name: Indian Journal of Microbiology

Authors: Gunjan Kumar Saurav, Guisuibou Daimei, Vipin Singh Rana, Sonam Popli and Raman Rajagopal*

Gut Biology Laboratory, Room No. 117, Department of Zoology, University of Delhi, Delhi, India-110007.

***Corresponding Author and Address**

Raman Rajagopal, Gut Biology Laboratory, Room No. 117, Department of Zoology, University of Delhi, Delhi, India-110007.

Email: zoorajagopal@gmail.com

Phone: 91-11-27662275/ 27667985

Fax: 011 27667985

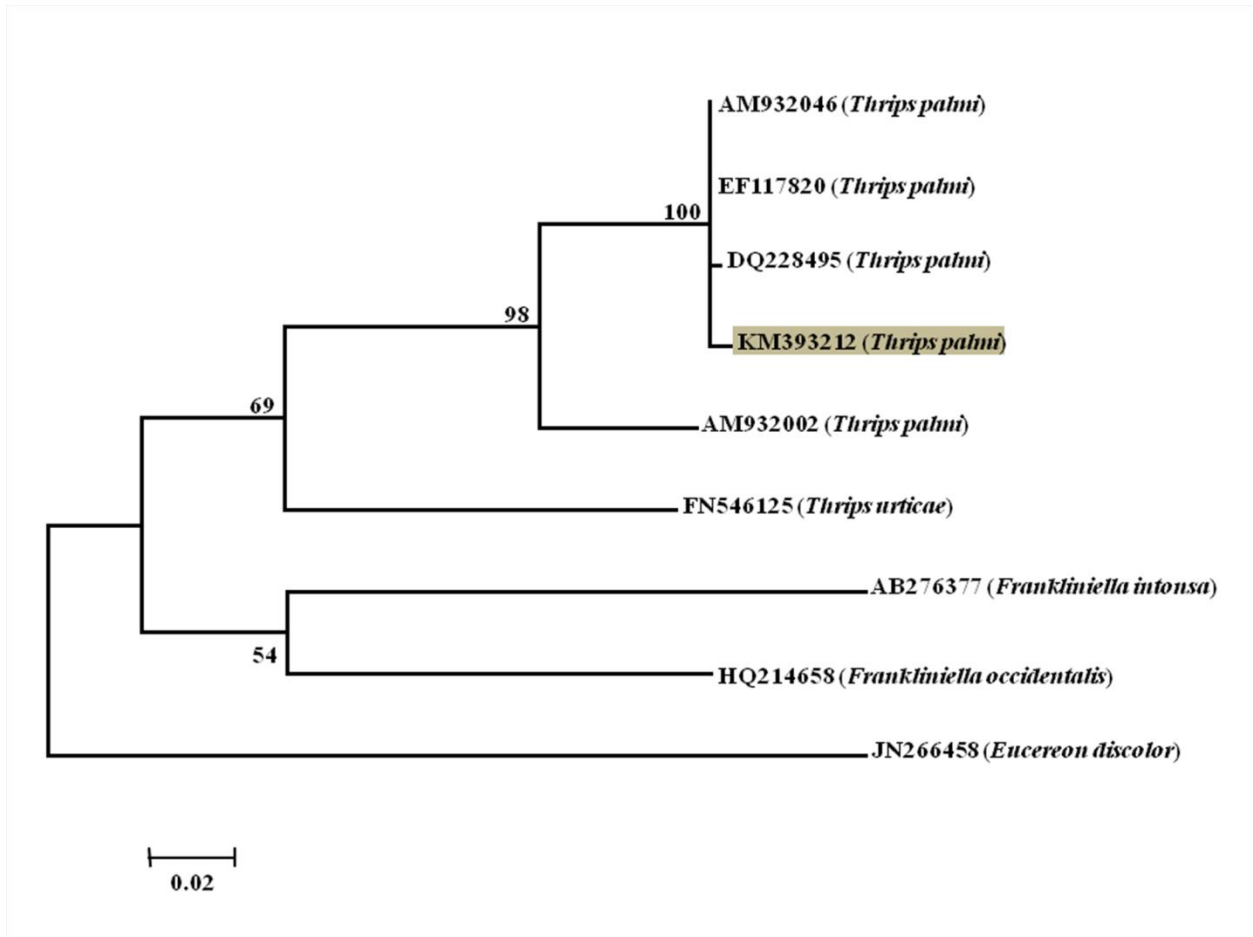


Fig. S1 Phylogenetic tree based on partial *mtCOI* gene sequence showing relationship of *Thrips palmi* from our study with previously submitted *mtCOI* gene sequences of *Thrips palmi* and other thrips species from NCBI database. For outgroup *mtCOI* gene sequence of *Eucereon discolor* (Order: Lepidoptera) was taken. Maximum likelihood analysis with Jukes-Cantor correction was performed for tree construction using MEGA6. Only bootstrap values above 50% are indicated. Sequence obtained from this study is shown with dark background.

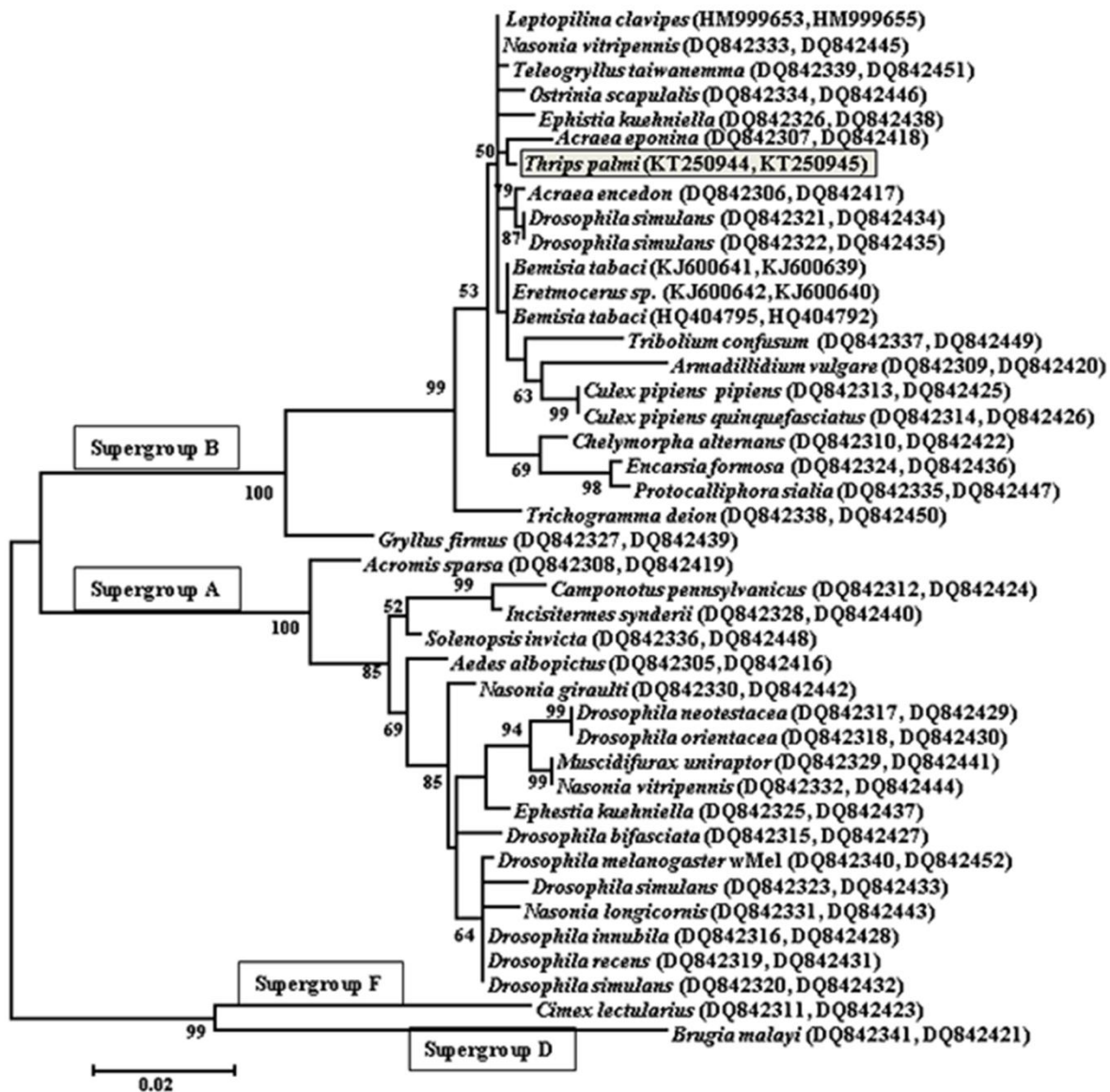


Fig. S2 Phylogenetic tree based on concatenated sequence of *ftsZ* and *gatB* genes of *Wolbachia* from *T. palmi* with previously submitted sequences of same genes of *Wolbachia* from NCBI database. Maximum likelihood analysis with Jukes-Cantor correction was performed for tree construction using MEGA6. Only bootstrap values higher than 50% are indicated. Sequence obtained from this study is shown with dark background.

Table S1: Main morphological characters that were used for the identification of *T. palmi*

Serial no.	Main morphological characters that were used for the identification of <i>T. palmi</i>
1.	Position of interocellar setae – arise from outside the ocellar triangle
2.	Colours of ocelli crescents – red pigment
3.	Metanotal sculpture - irregular longitudinal lines converging mesad posteriorly and never reticulate.
4.	Tergite II – four lateral setae
5.	Forewing - upper vein with 3 distal setae
6.	Targite VIII – microtrichial comb slender and complete