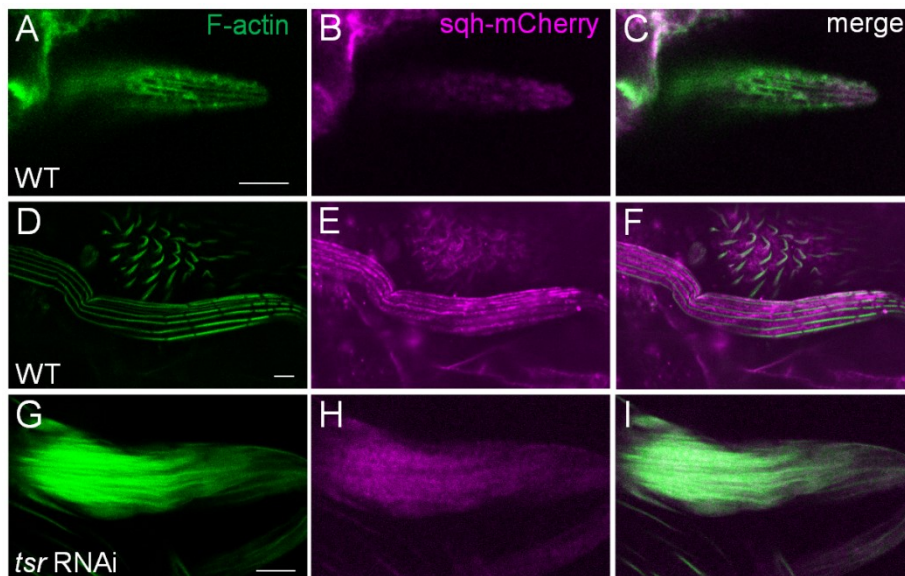


# Supplemental Materials

*Molecular Biology of the Cell*

Wu et al.

## Supplementary Figure



**Figure S1** Sqh-mCherry's distribution patterns in the wild type and *tsr RNAi* bristles. (A-F) Bristles expressing Sqh-mCherry (magenta) at 34h (A-C) and 48h (D-F) APF were stained with FITC-phalloidin (green). The Sqh-mCherry also displayed complementary pattern to that of actin bundles, which is similar to Sqh-GFP. (G-I) Mature bristles of *tsr RNAi* pupae expressing Sqh-mCherry at 48h APF were stained with FITC-phalloidin (green). Actin bundles are disorganized in *tsr RNAi* bristle, and the Sqh is redistributed and colocalized with the actin bundles in the internal cytoplasm. Bars, 5 $\mu$ m.