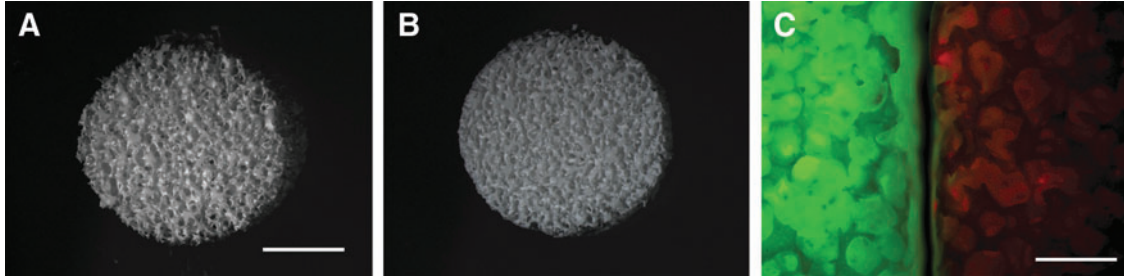


Supplementary Data



SUPPLEMENTARY FIG. S1. Scaffolding material. **(A)** E1001(1k) scaffold. **(B)** E1001(1k)/ β -TCP scaffold. **(C)** E1001(1k) and E1001(1k)/ β -TCP scaffold after alizarin red staining. Alizarin red-stained β -TCP nodules stained *red* under fluorescence. Scale bar = 2.0 mm **(A, B)**, 500 μ m **(C)**.