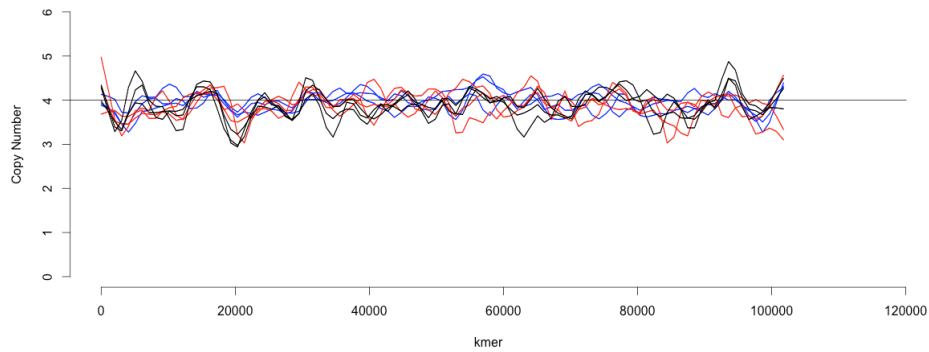


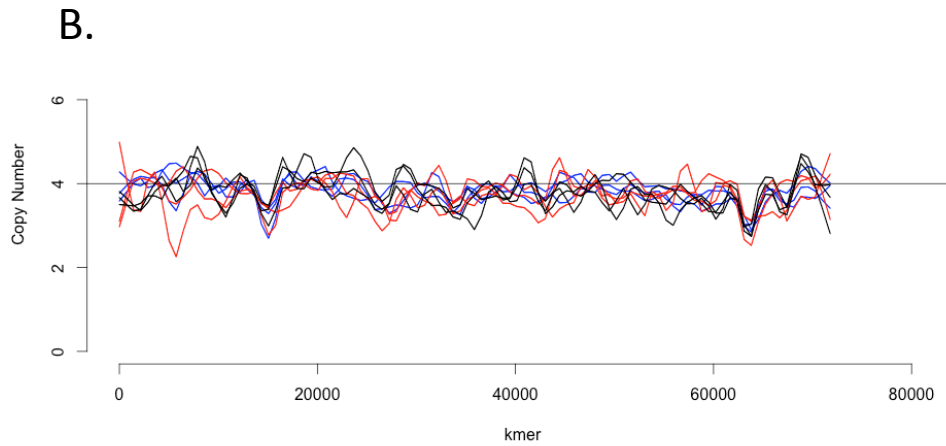
# Supp. Figure 1

A. Blue Arms

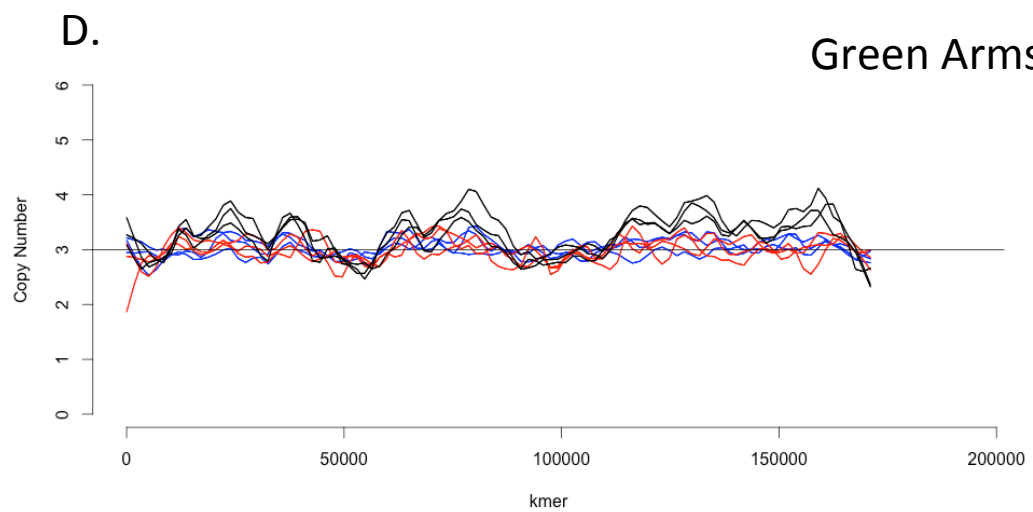
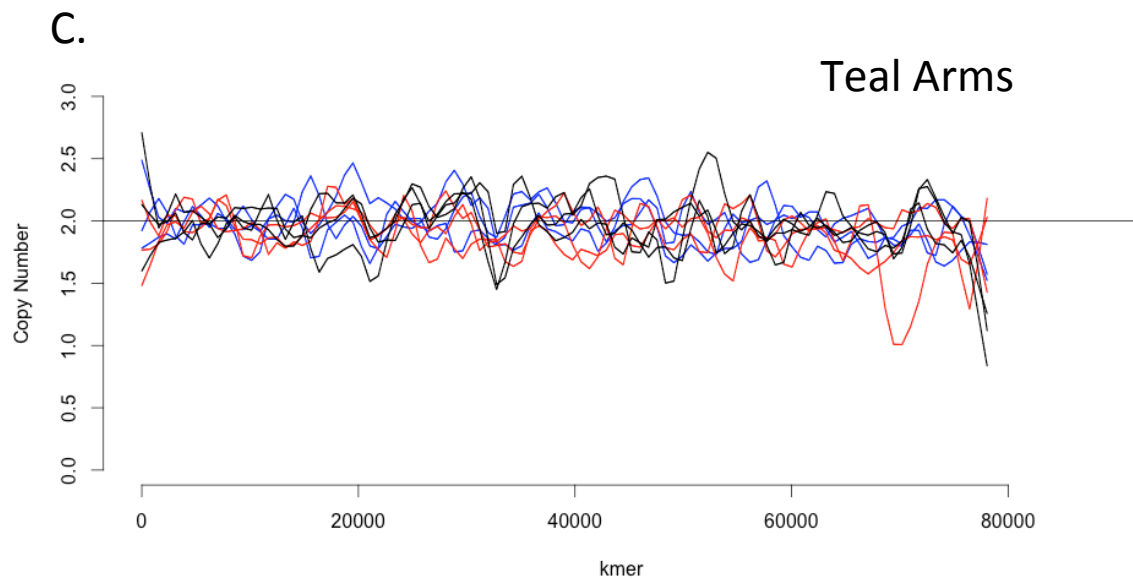
European  
African  
Asian



Red Arms



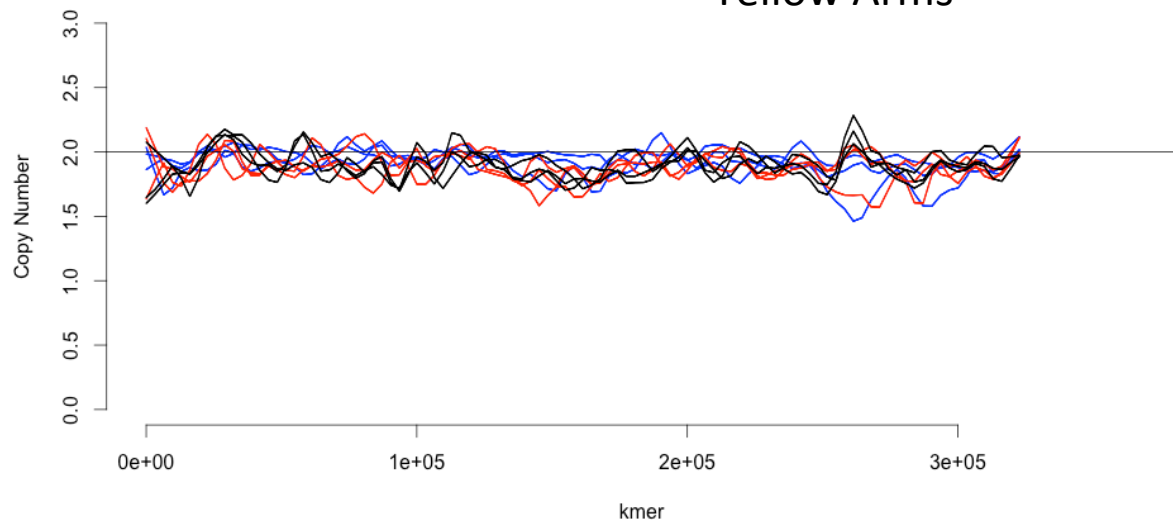
■ European  
■ African  
■ Asian



- European
- African
- Asian

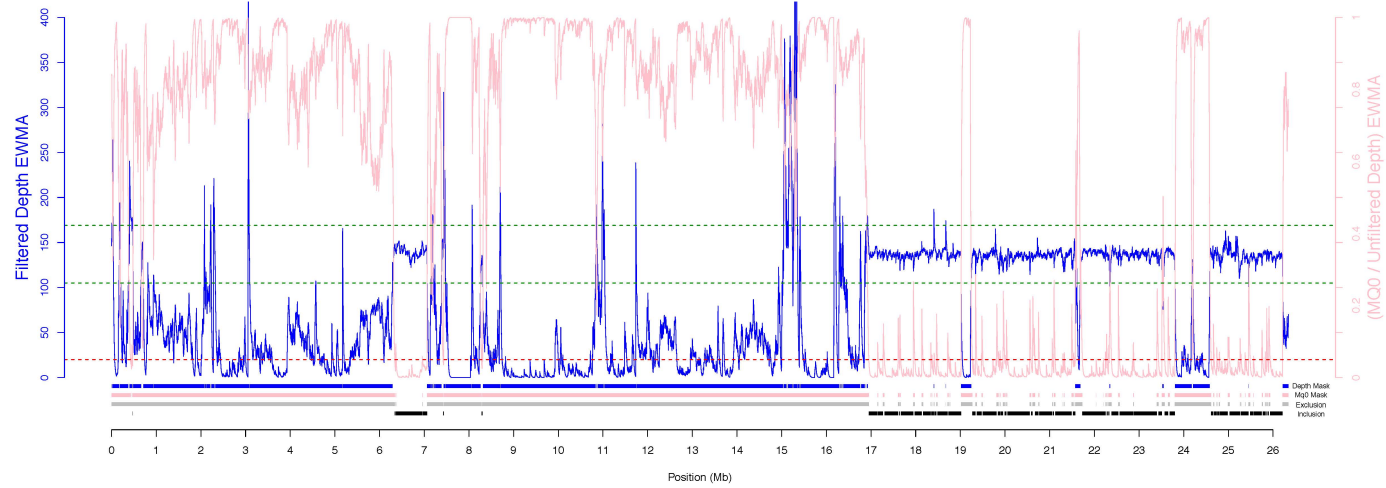
E.

### Yellow Arms

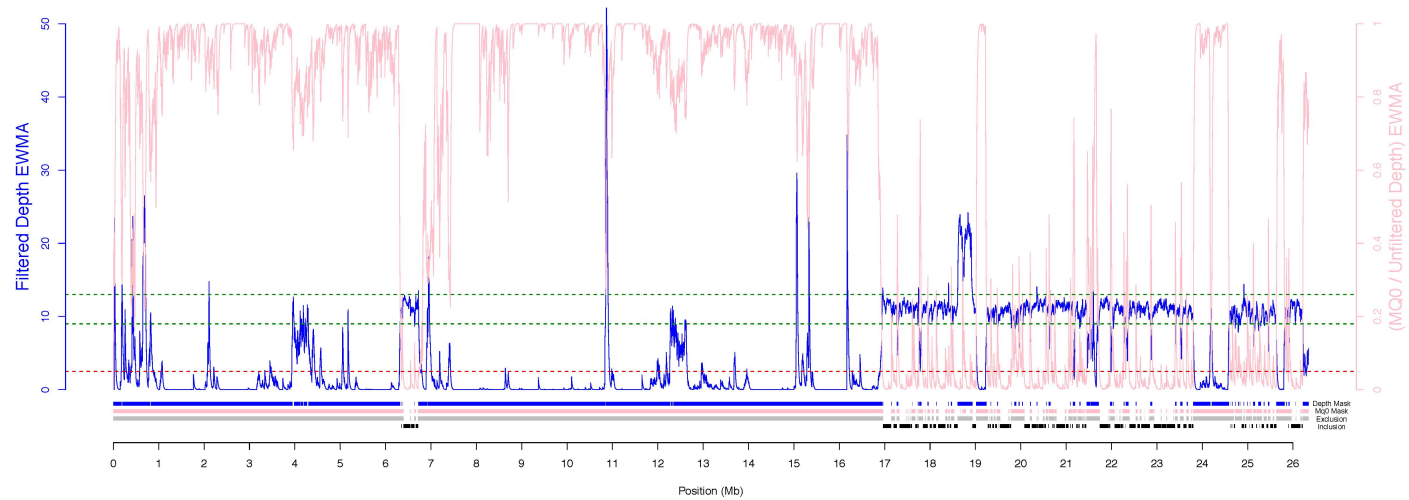


# Supp. Figure 2

A.

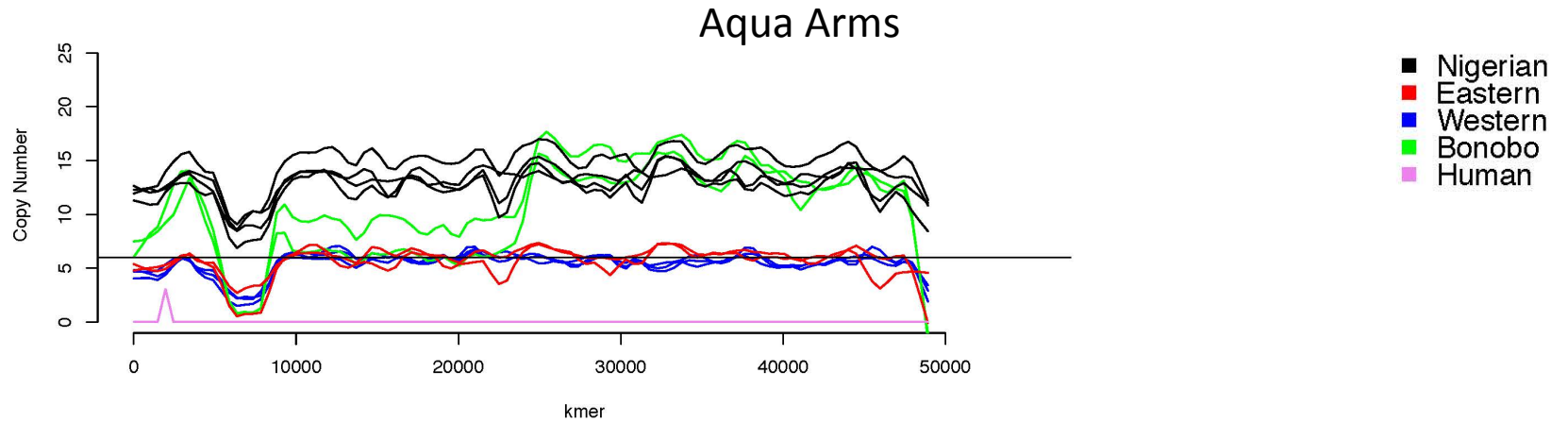


B.

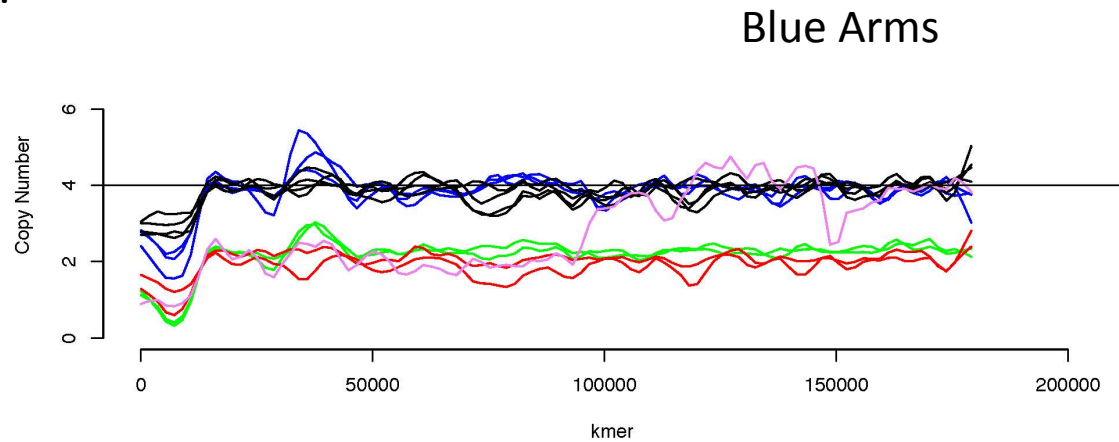


# Supp. Figure 3

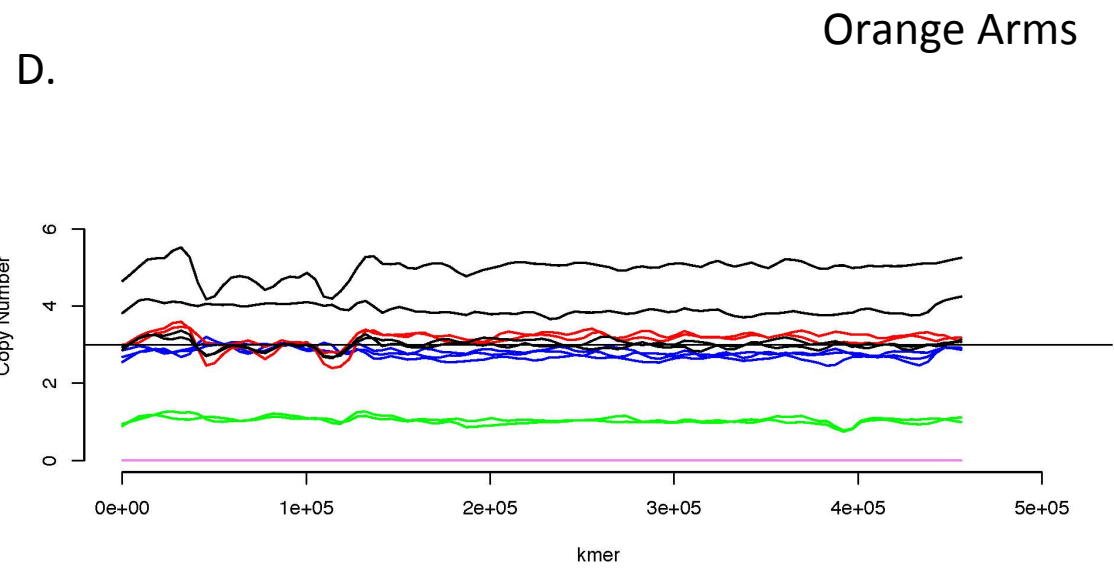
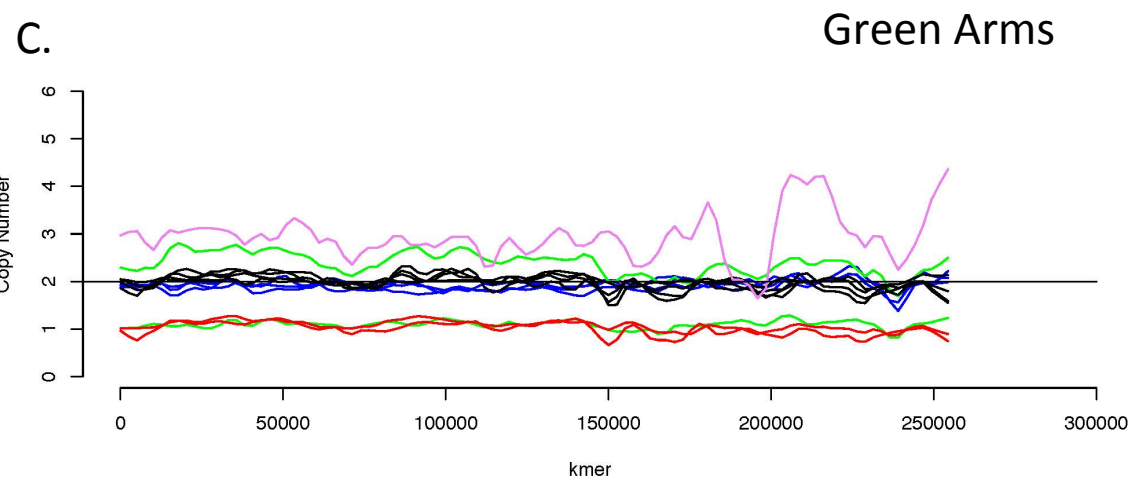
A.



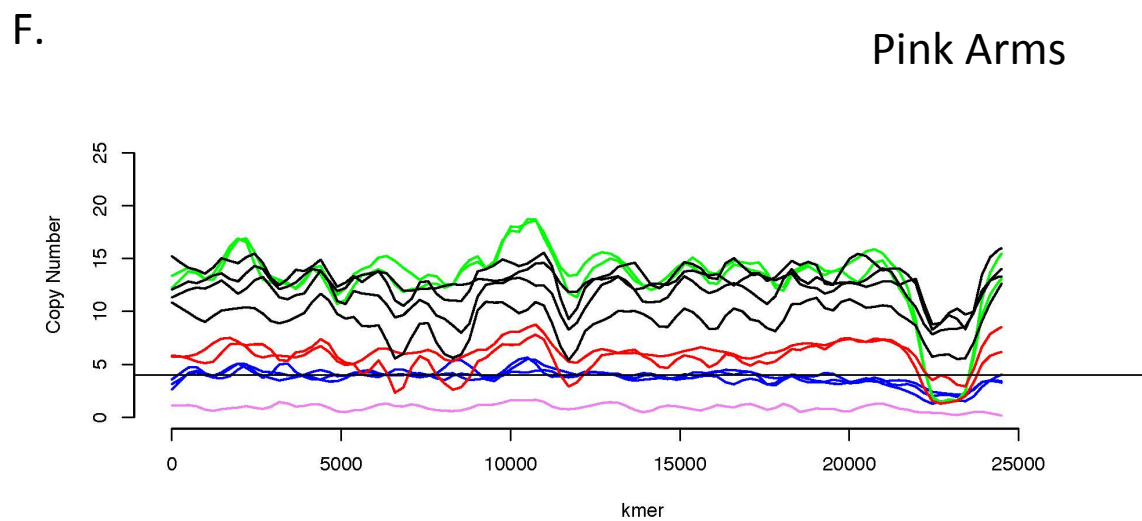
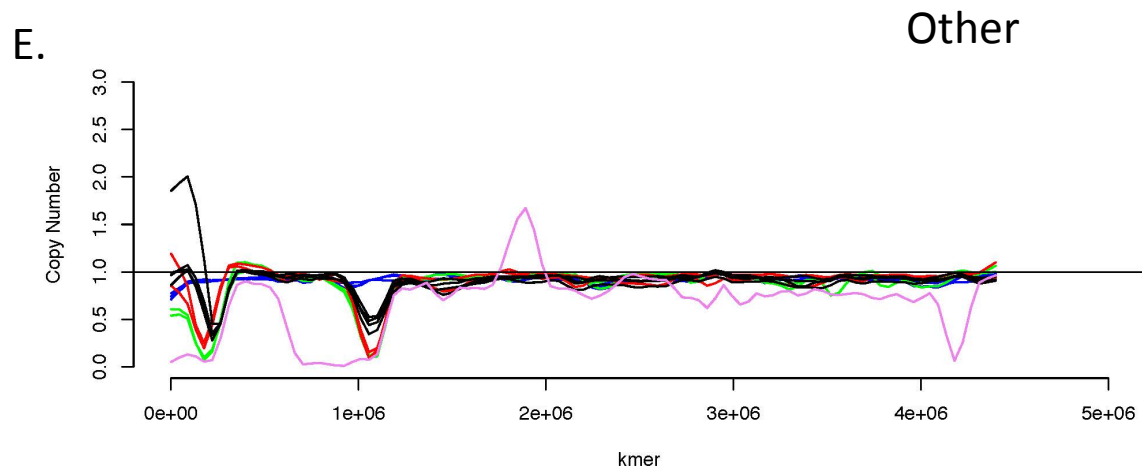
B.



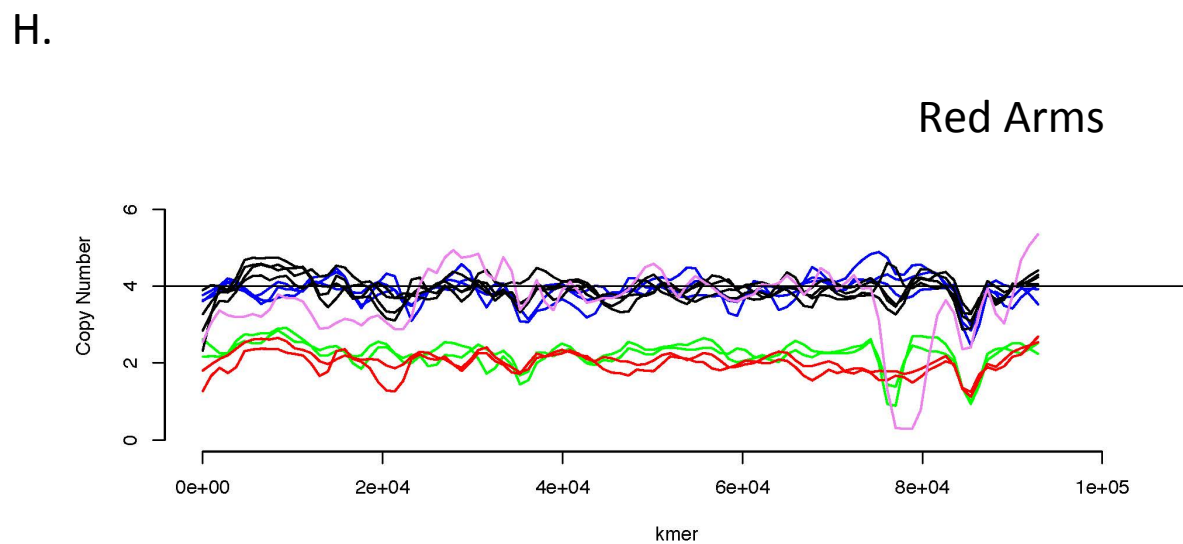
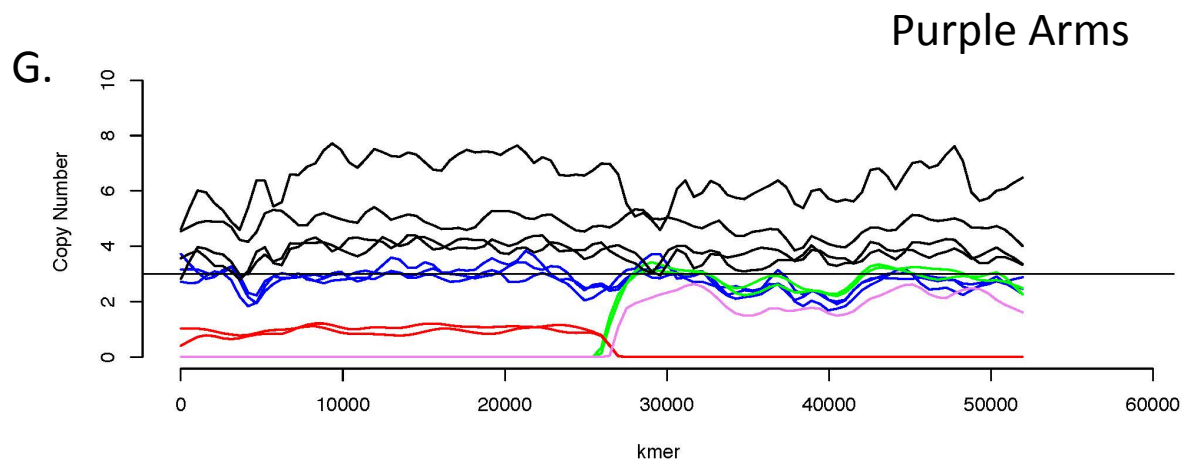
- Nigerian
- Eastern
- Western
- Bonobo
- Human



- Nigerian
- Eastern
- Western
- Bonobo
- Human

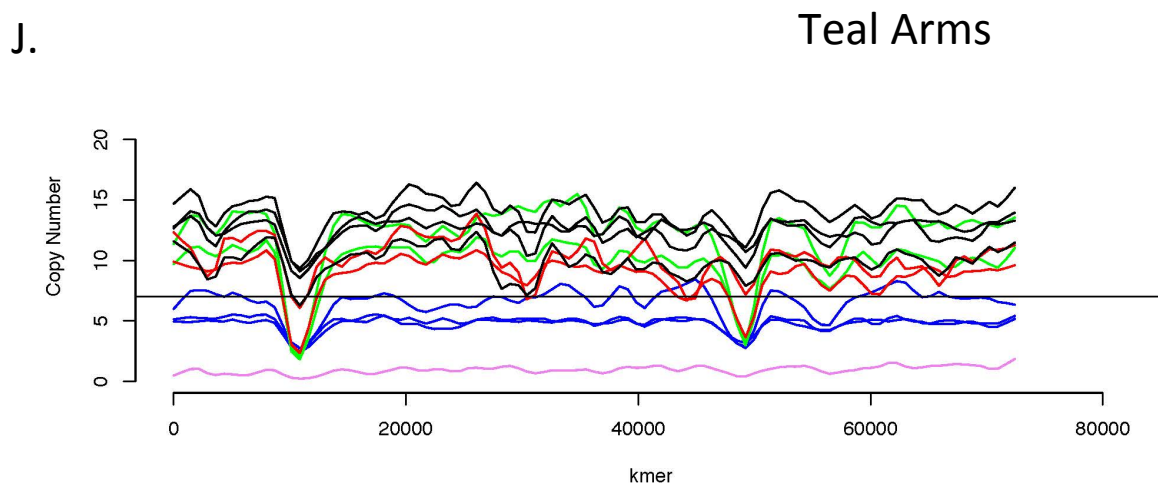
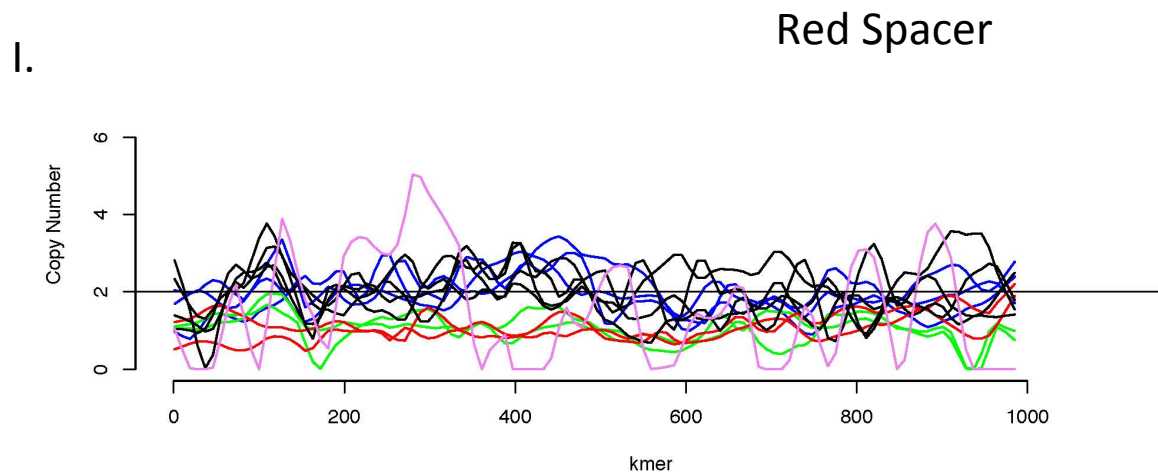


- Nigerian
- Eastern
- Western
- Bonobo
- Human

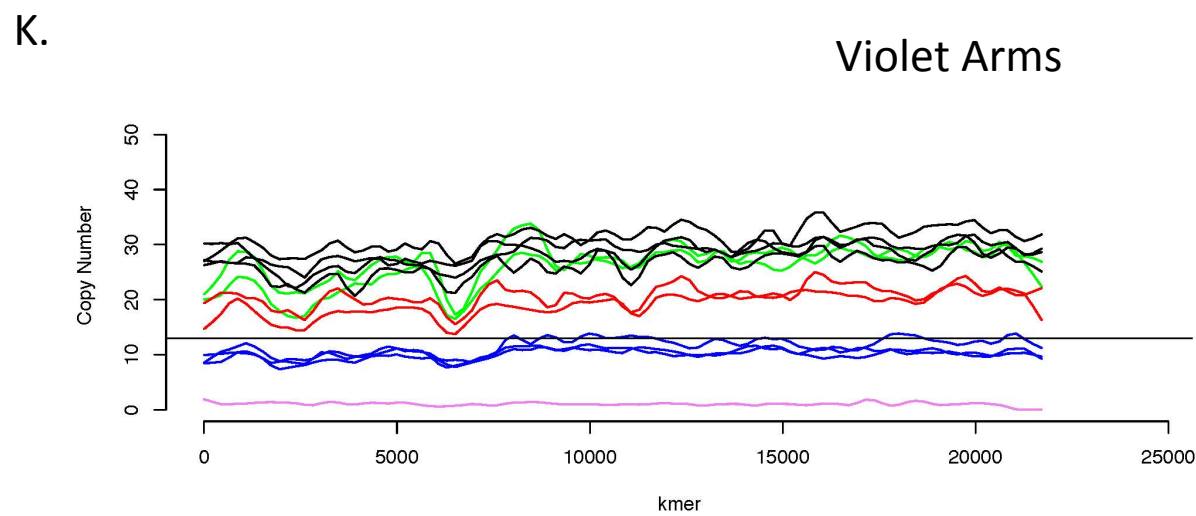
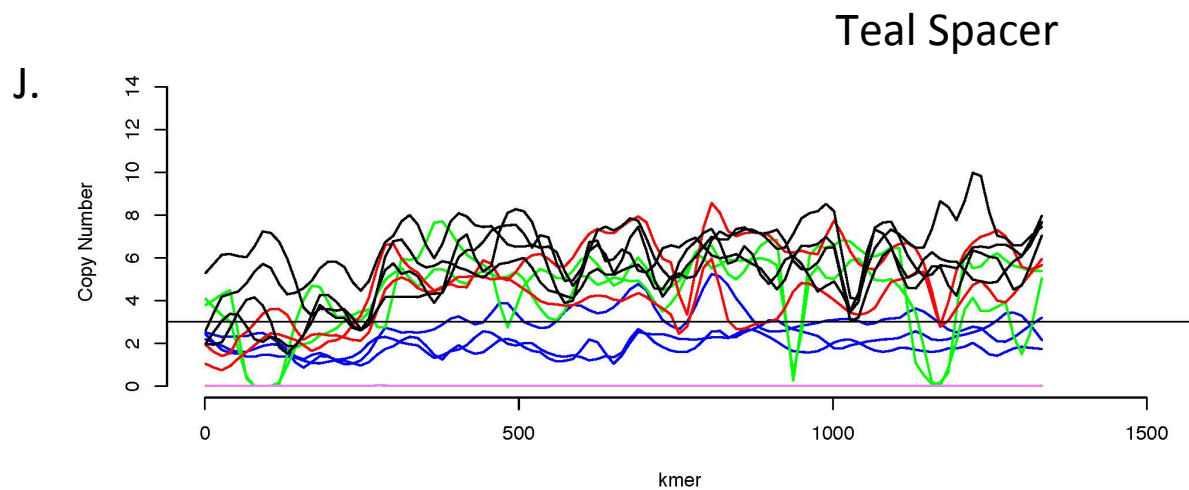




- Nigerian
- Eastern
- Western
- Bonobo
- Human



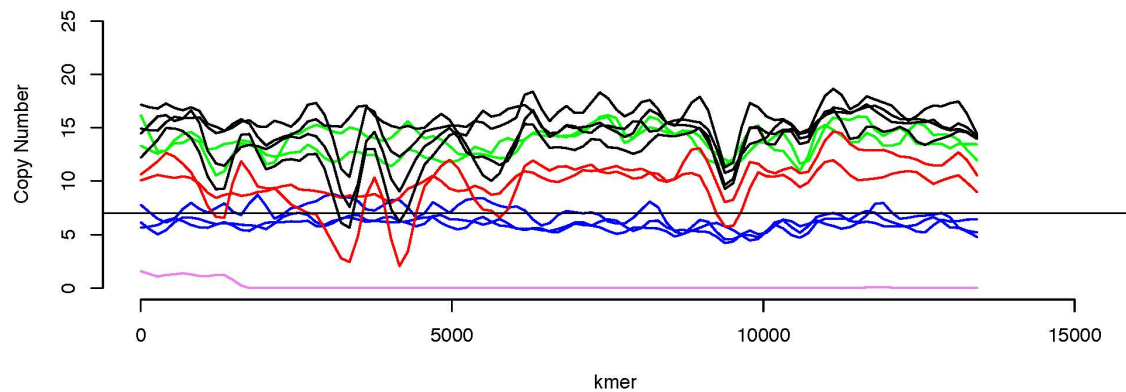
- Nigerian
- Eastern
- Western
- Bonobo
- Human



- Nigerian
- Eastern
- Western
- Bonobo
- Human

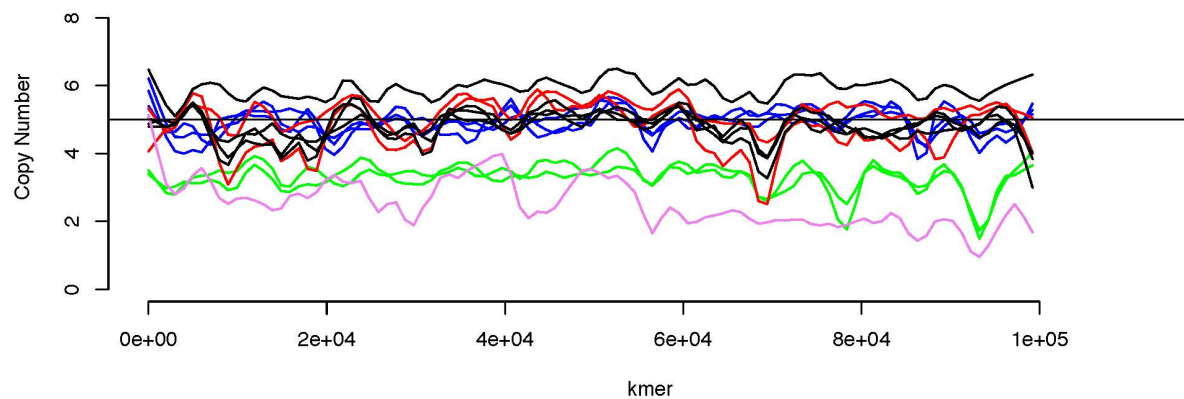
L.

### Violet Spacer



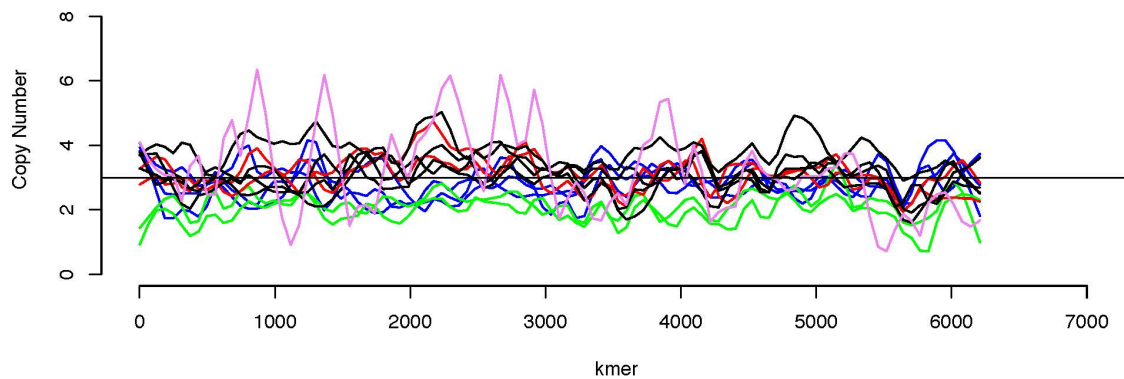
M.

### Yellow Arms

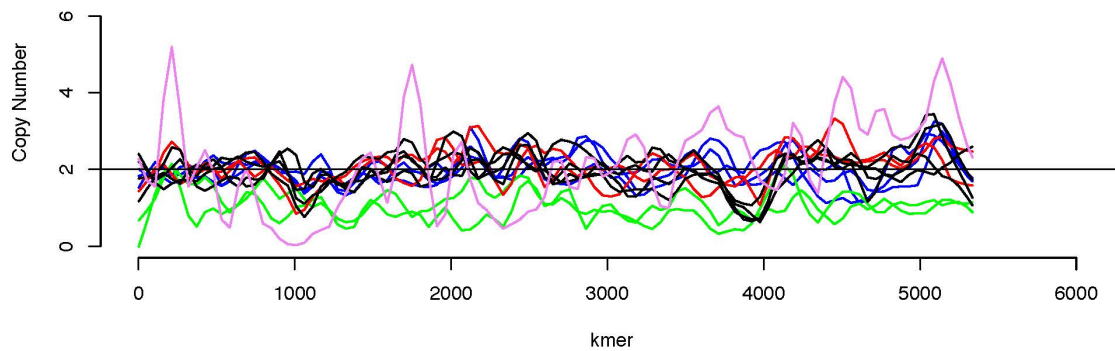


- Nigerian
- Eastern
- Western
- Bonobo
- Human

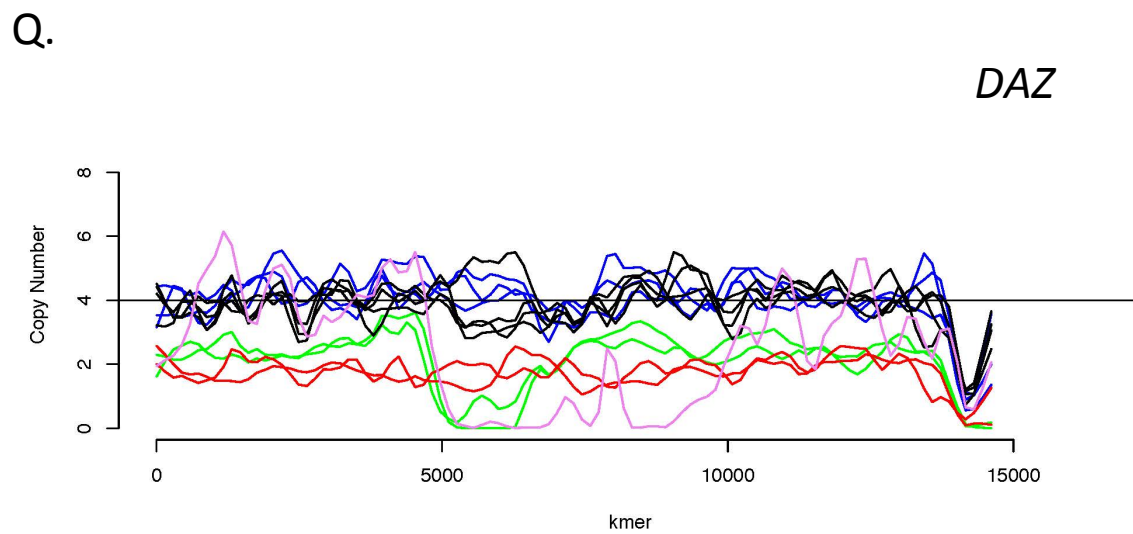
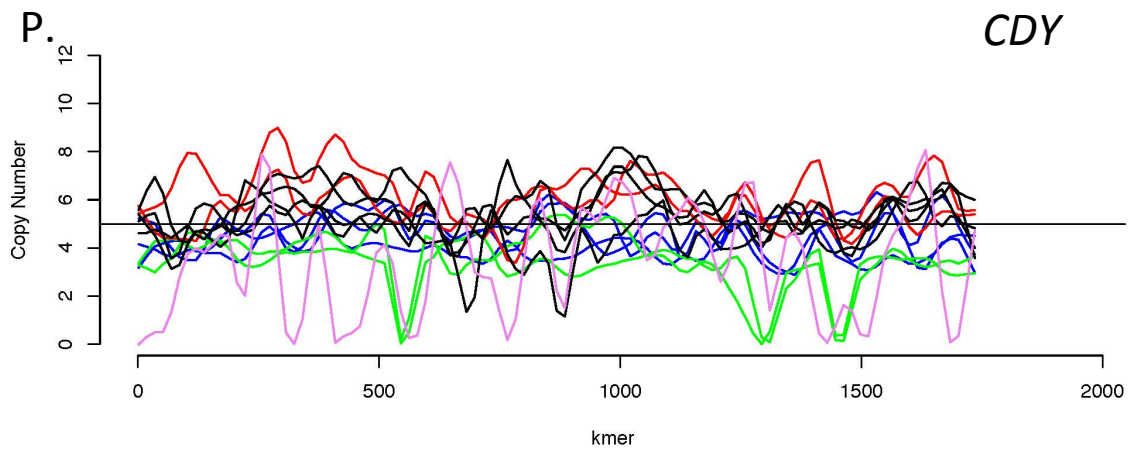
N. Yellow Spacer (CN 3)



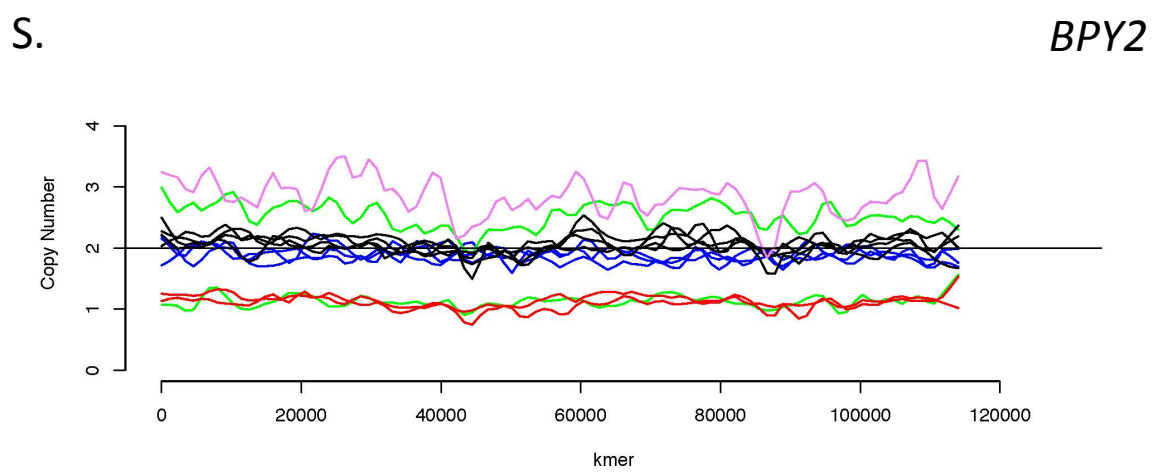
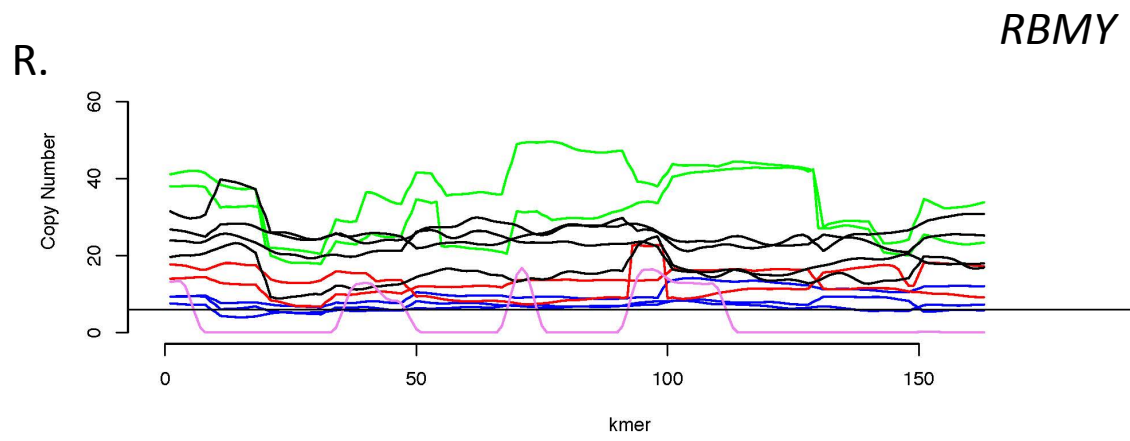
O. Yellow Spacer (CN 2)



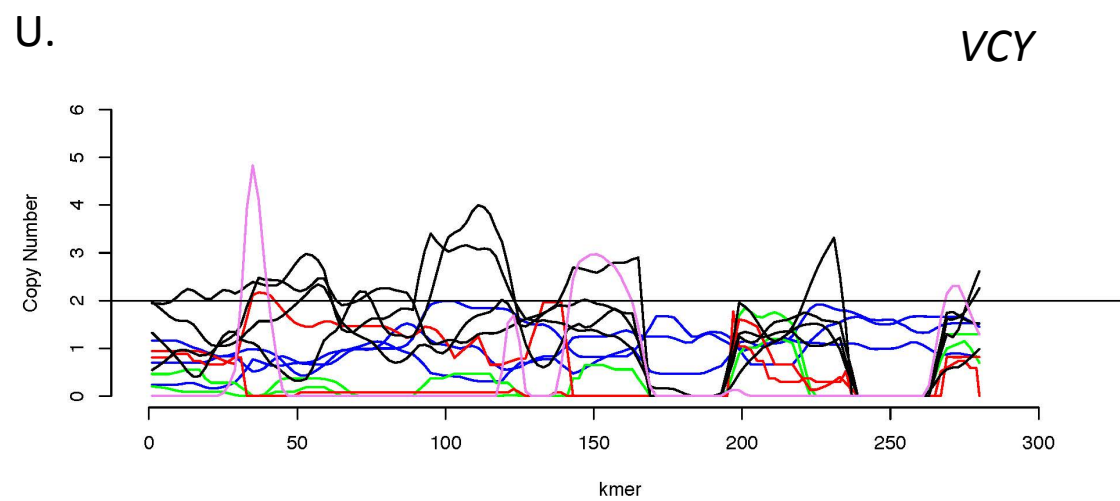
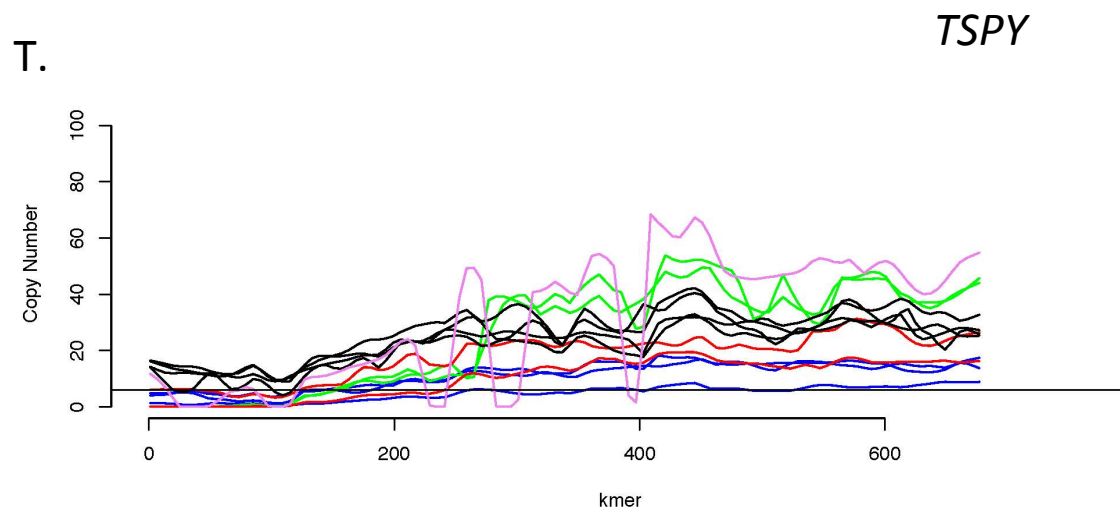
- Nigerian
- Eastern
- Western
- Bonobo
- Human



- Nigerian
- Eastern
- Western
- Bonobo
- Human

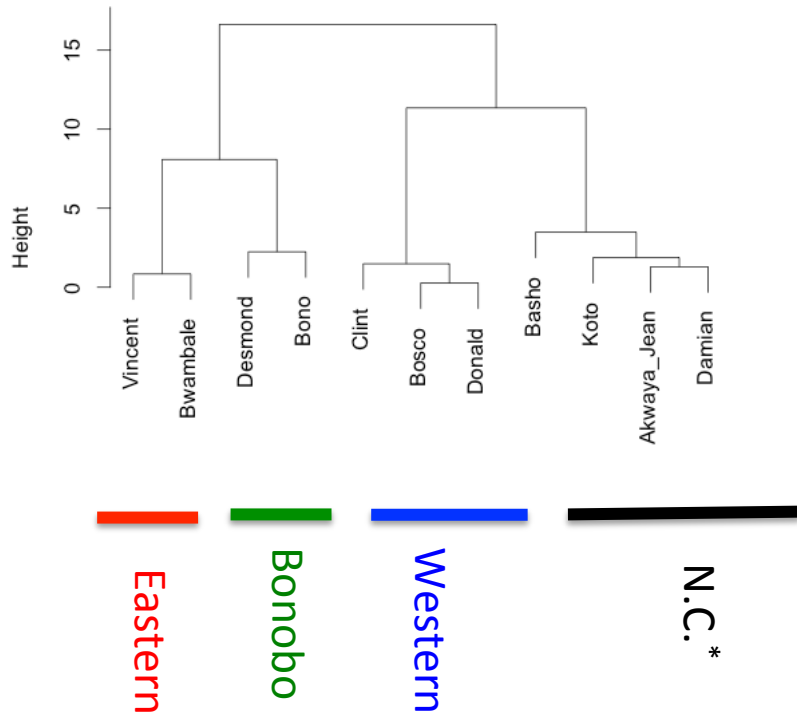


- Nigerian
- Eastern
- Western
- Bonobo
- Human

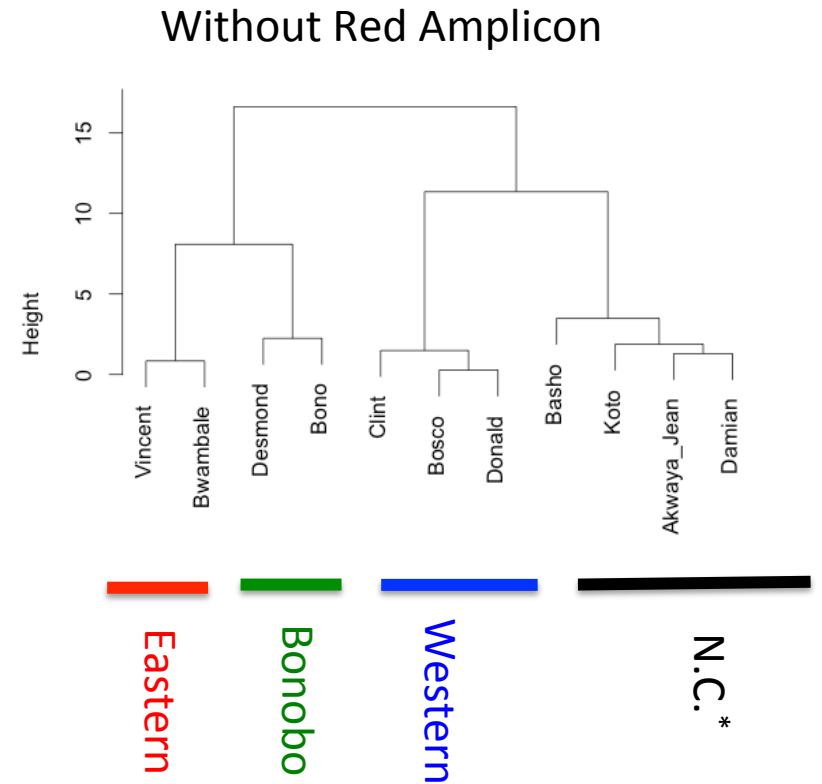


# Supp. Figure 4

A.



B.



\*N.C. Nigerian-Cameroon