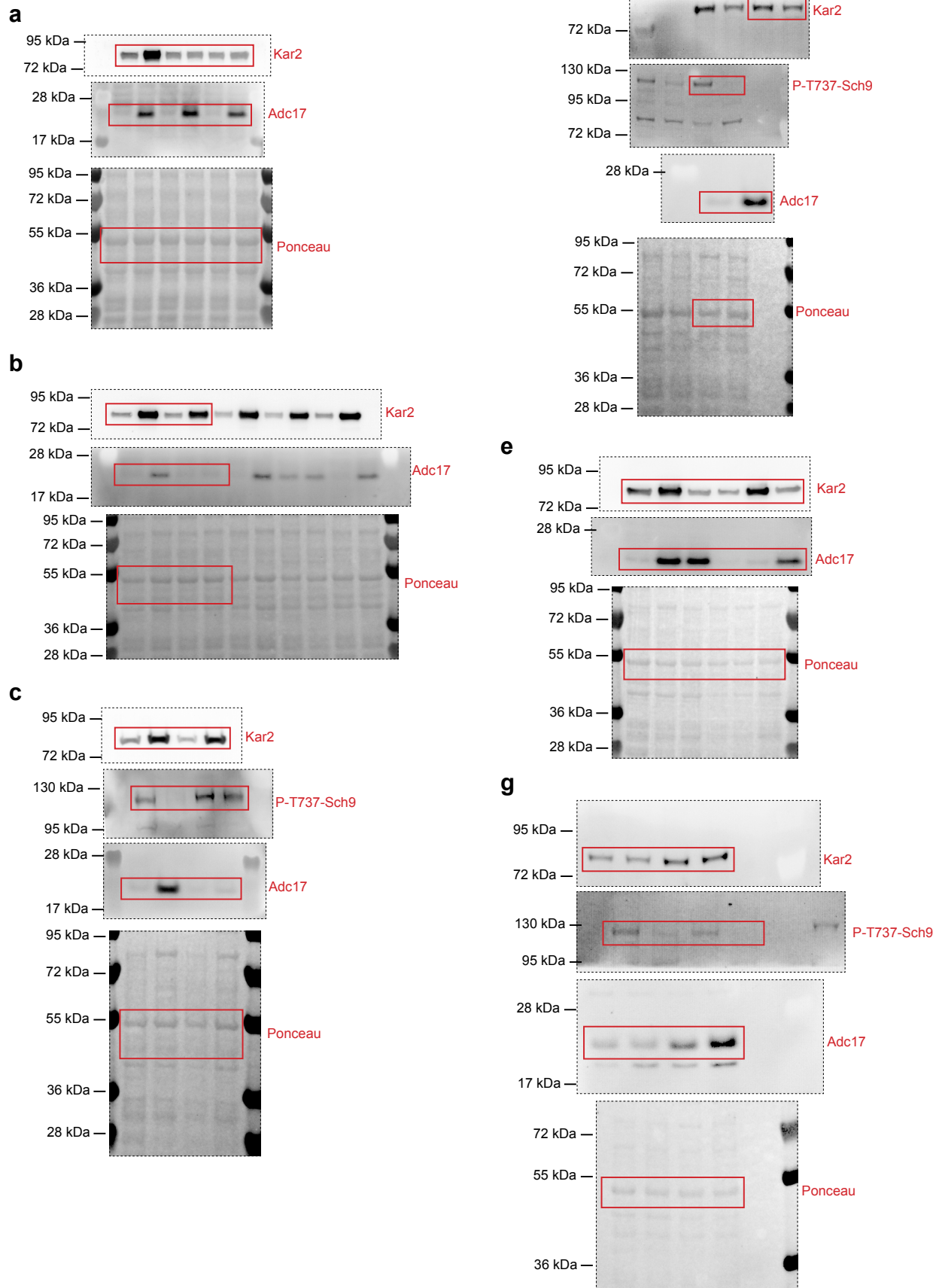
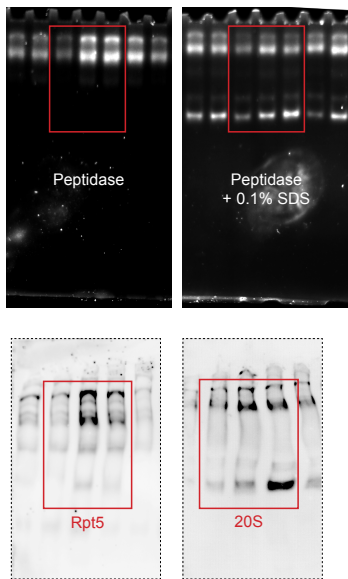
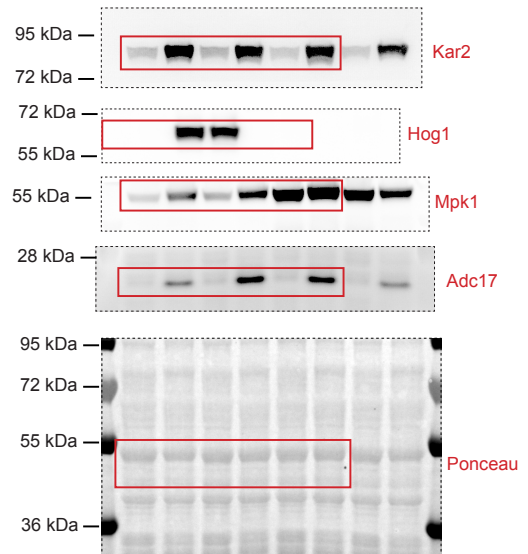
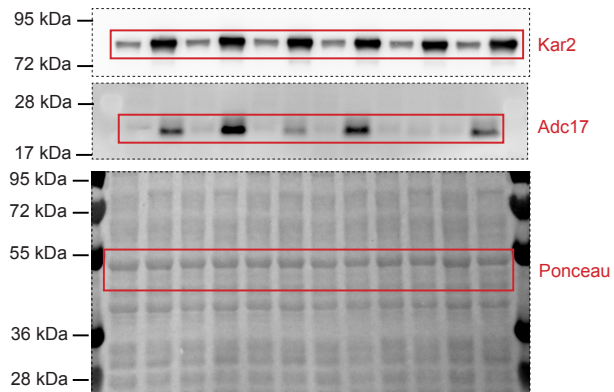
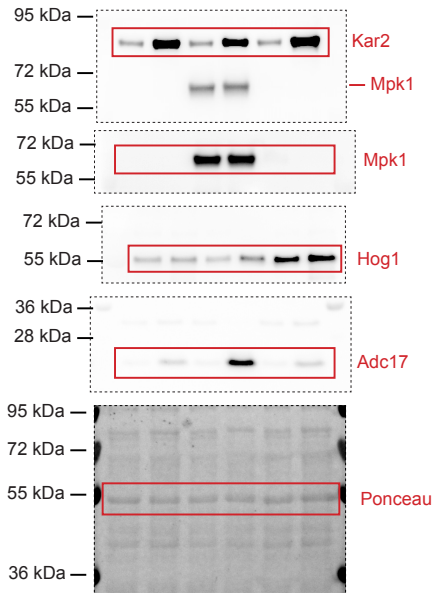
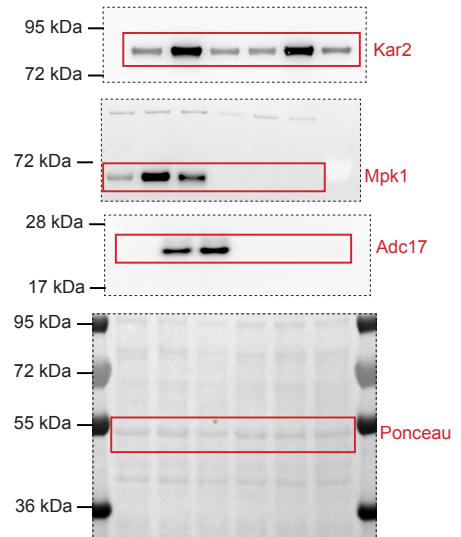
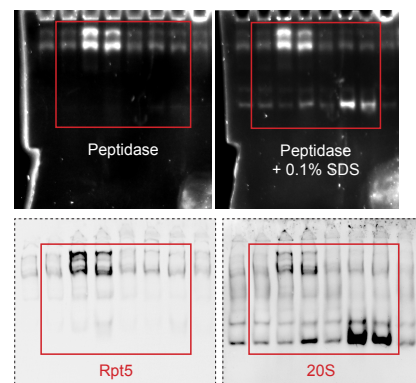


Supplementary Figure 1

Figure 1



After protein transfer membranes were cut and their fragments were incubated with antibodies against indicated proteins.

Figure 1**h****Figure 2****g****Figure 2****c****e****Figure 3****a****b**

After protein transfer membranes were cut and their fragments were incubated with antibodies against indicated proteins.

Figure 3

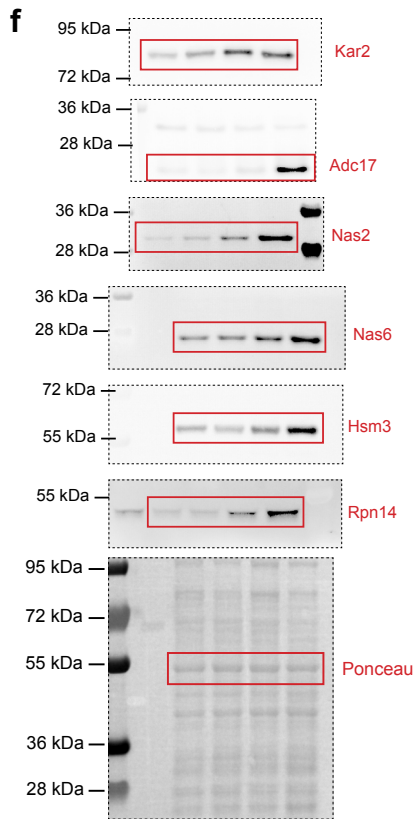
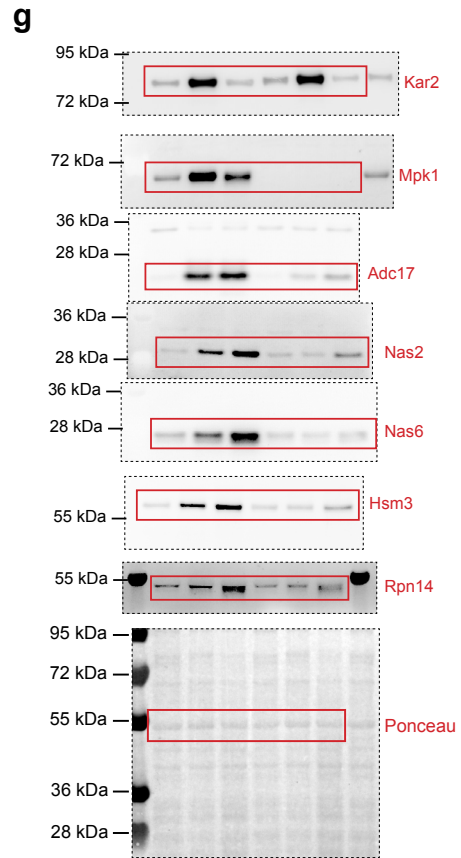
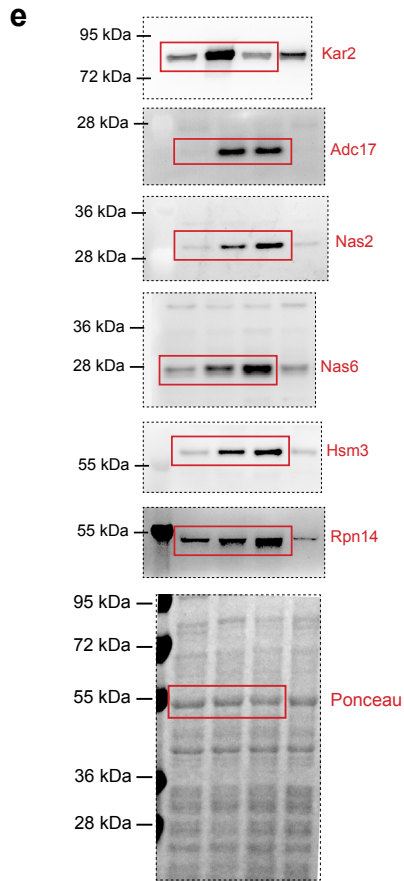
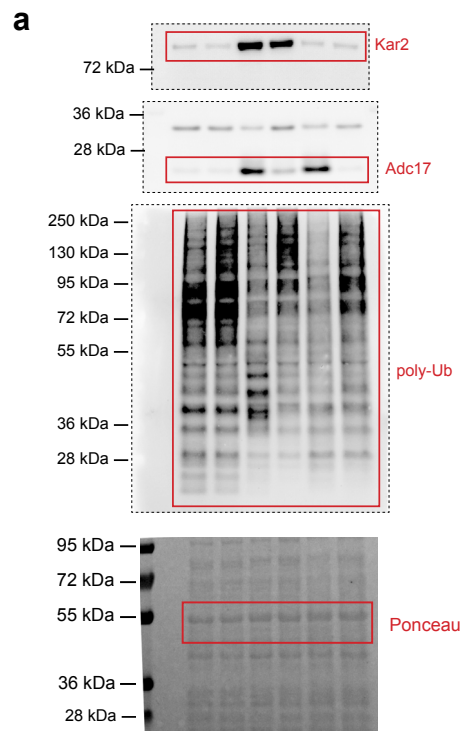


Figure 5



After protein transfer membranes were cut and their fragments were incubated with antibodies against indicated proteins.

Figure 5

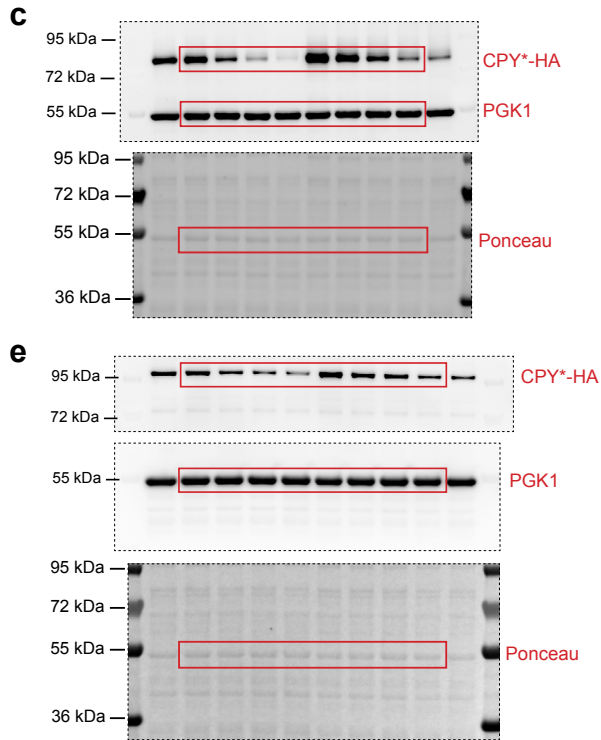


Figure 6

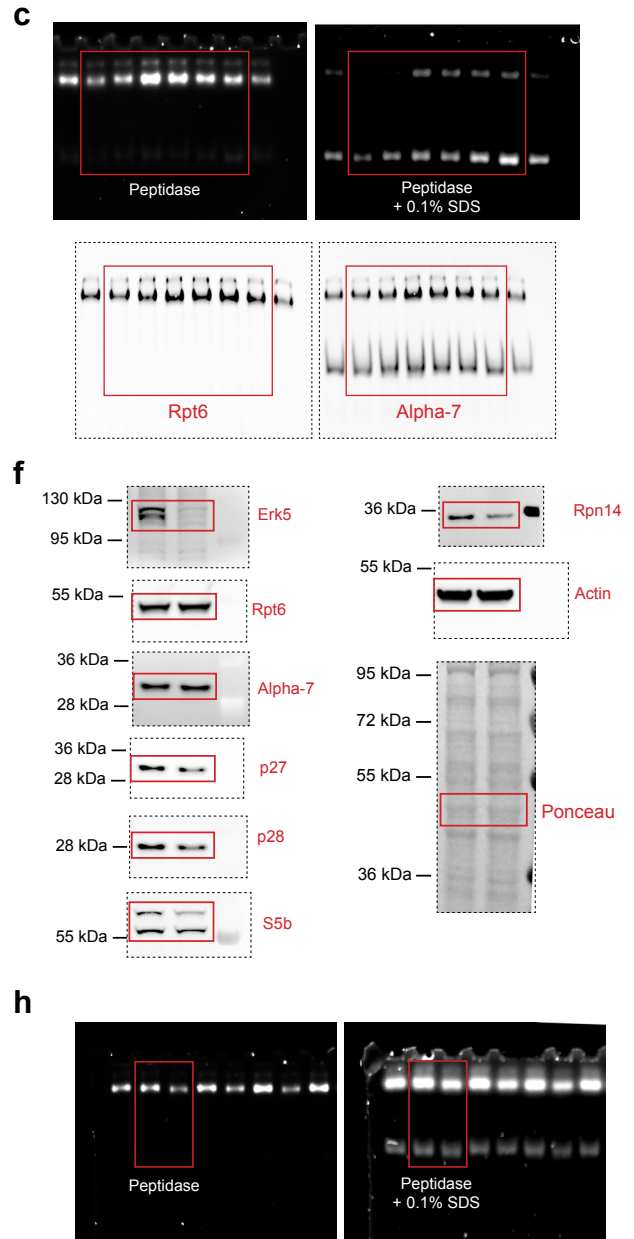
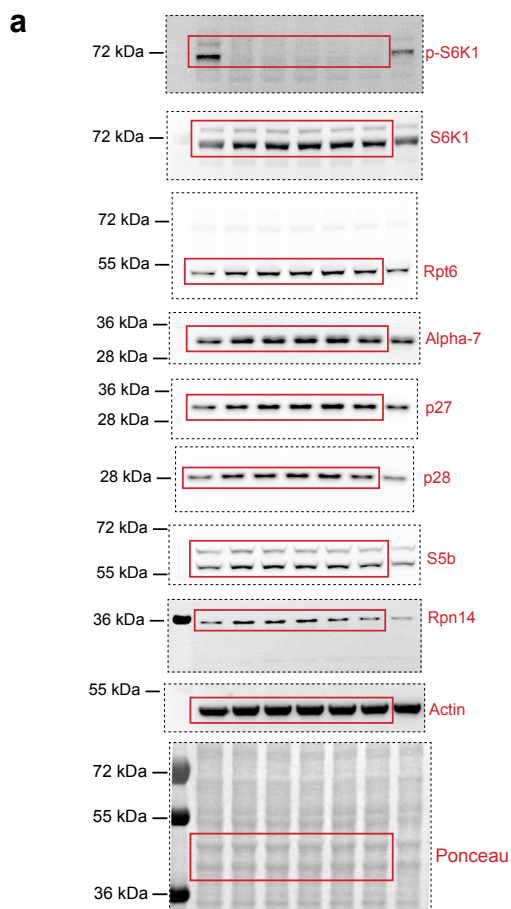
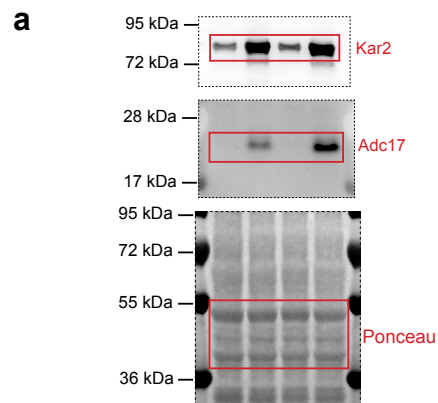


Figure 6

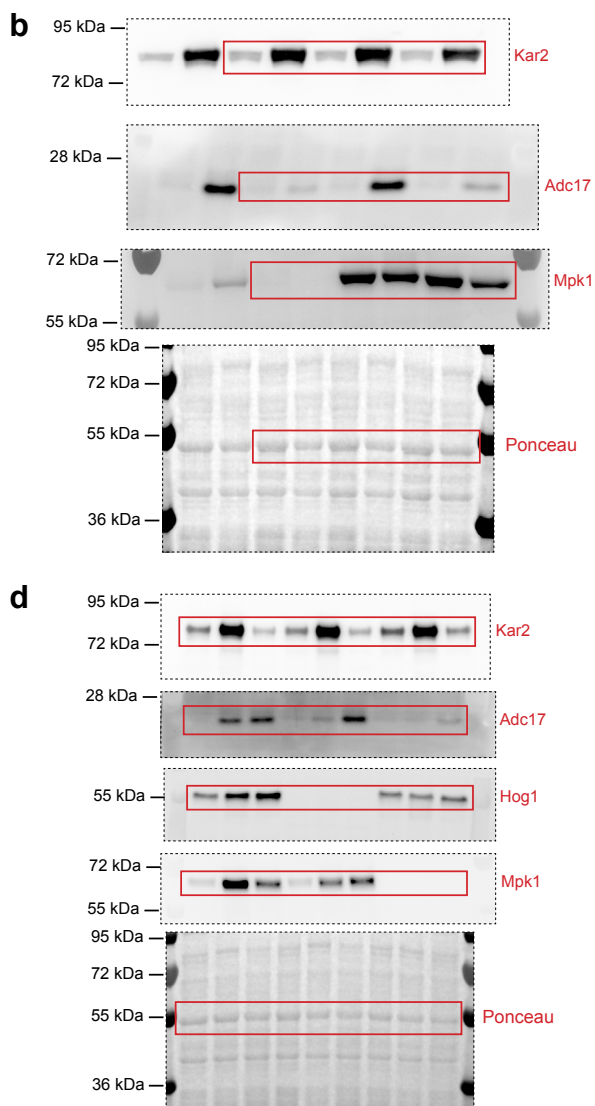


Extended Data Figure 1

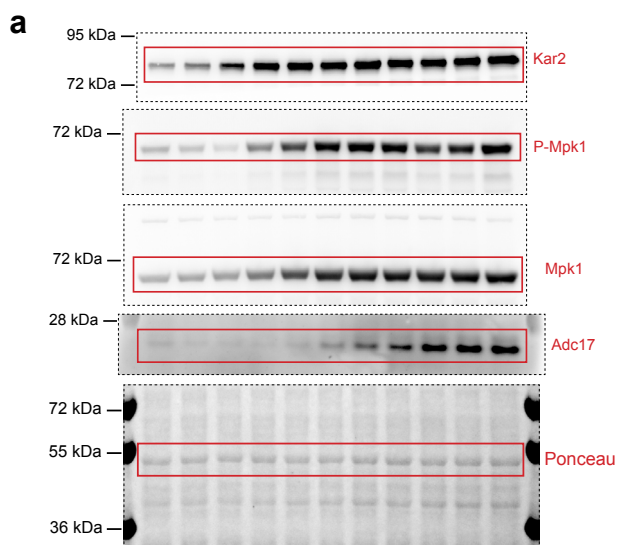


After protein transfer membranes were cut and their fragments were incubated with antibodies against indicated proteins.

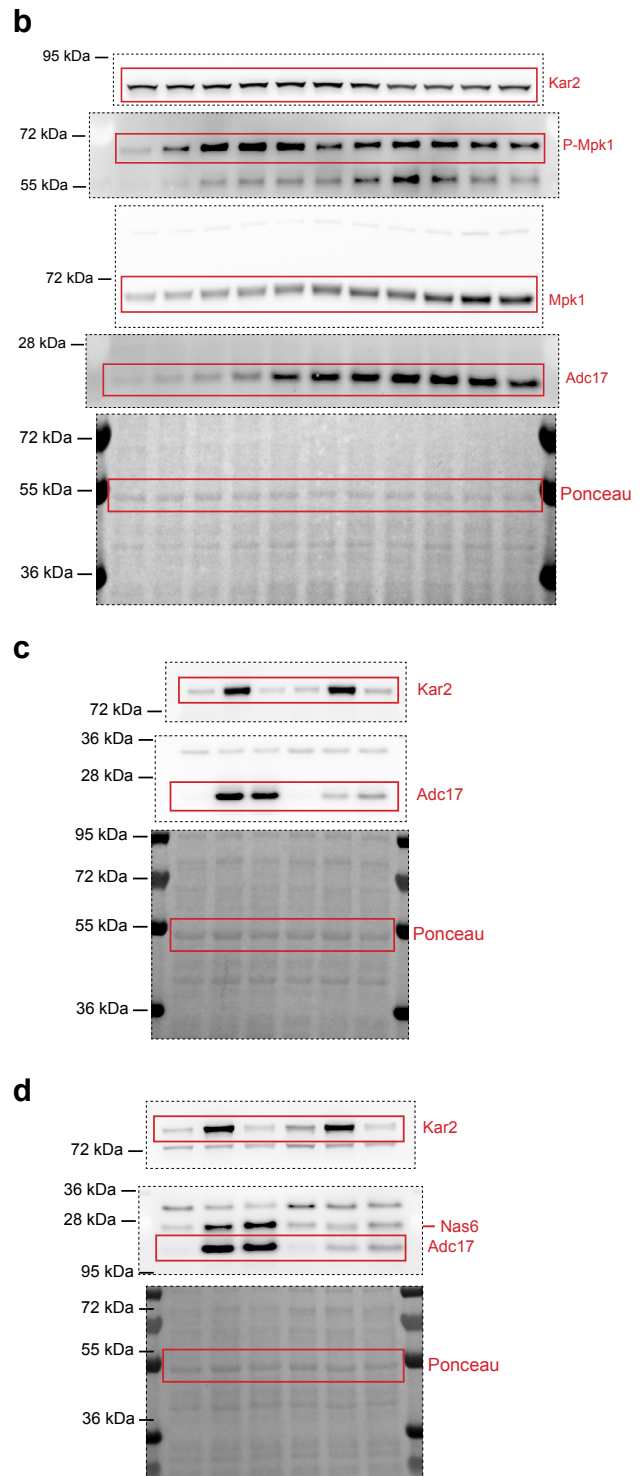
Extended Data Figure 2



Extended Data Figure 3

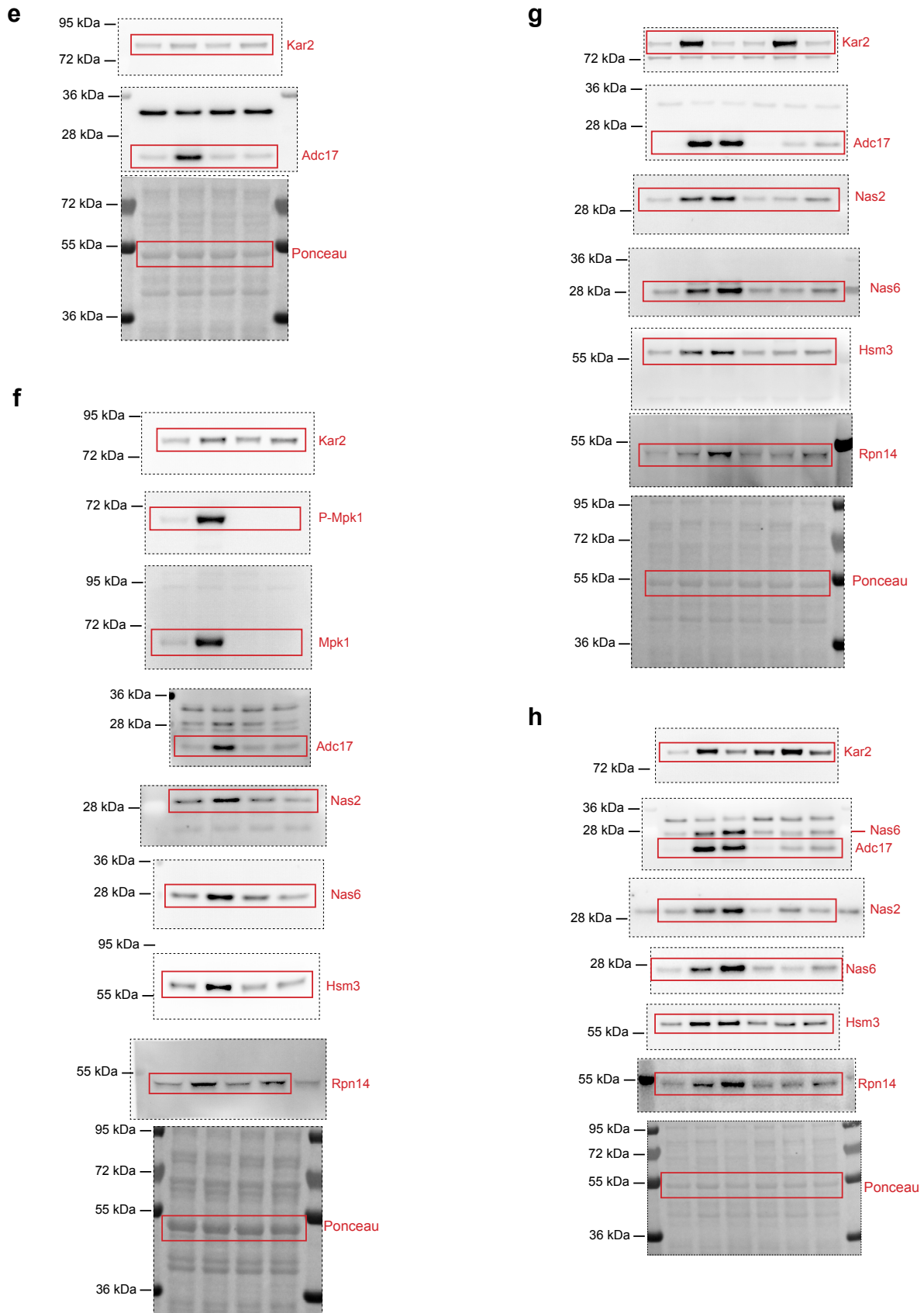


Extended Data Figure 3



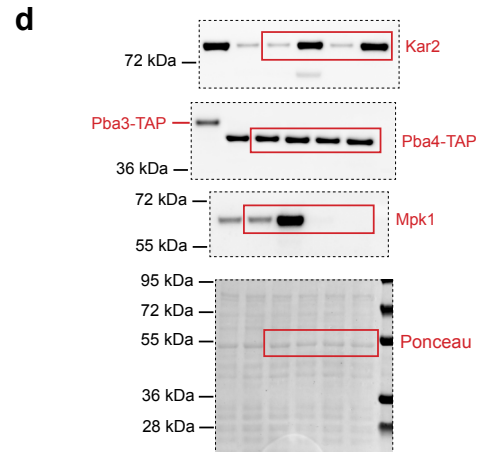
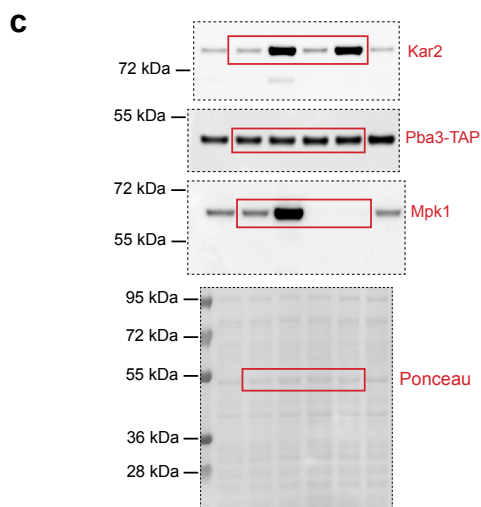
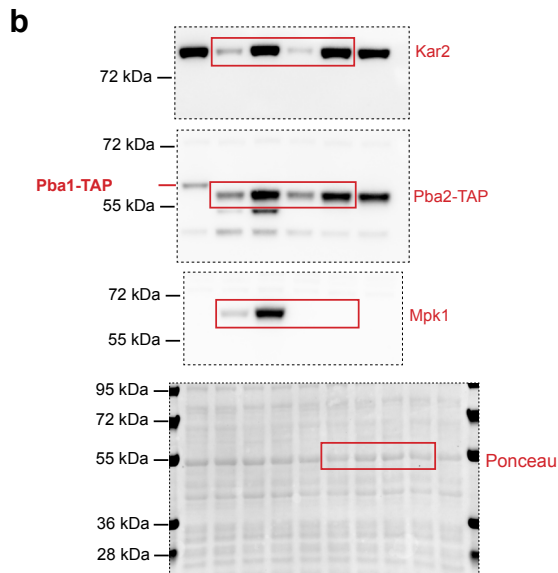
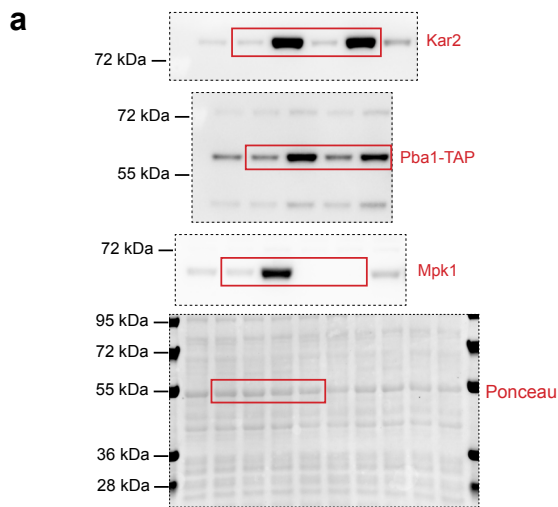
After protein transfer membranes were cut and their fragments were incubated with antibodies against indicated proteins.

Extended Data Figure 3

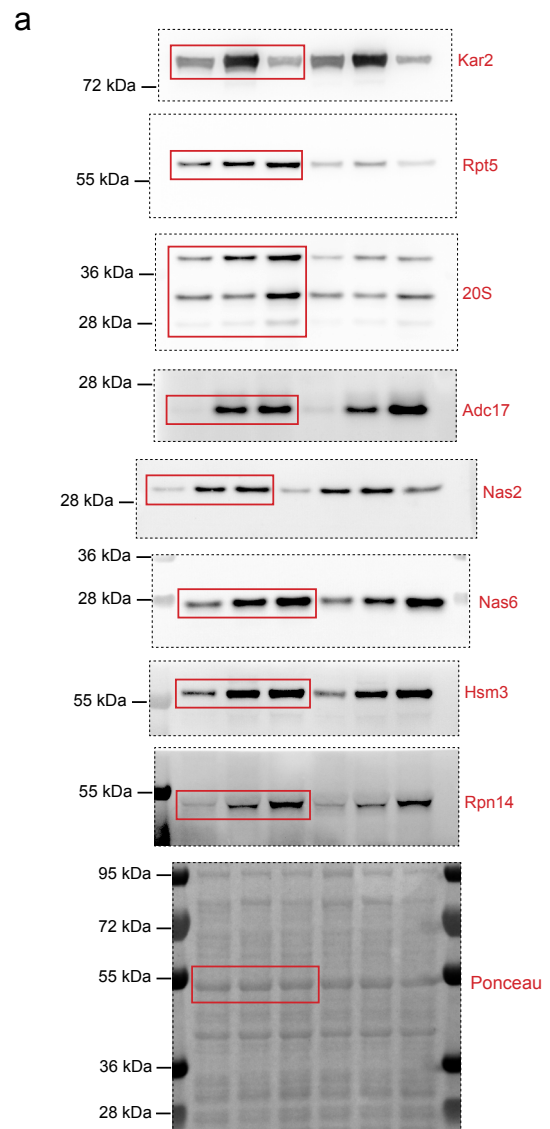


After protein transfer membranes were cut and their fragments were incubated with antibodies against indicated proteins.

Extended Data Figure 5



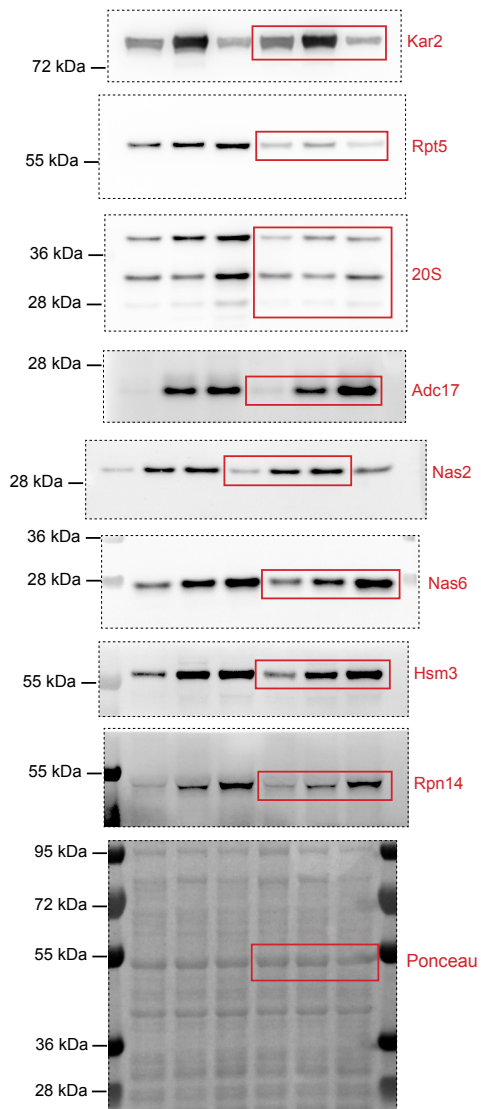
Extended Data Figure 6



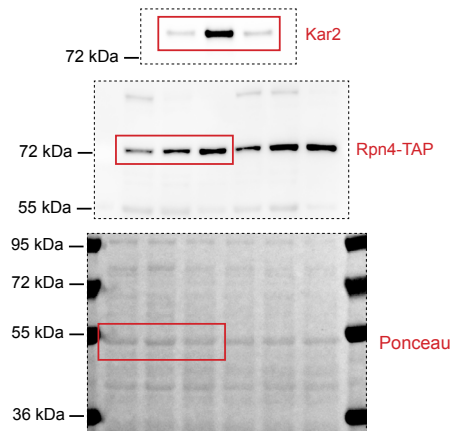
After protein transfer membranes were cut and their fragments were incubated with antibodies against indicated proteins.

Extended Data Figure 6

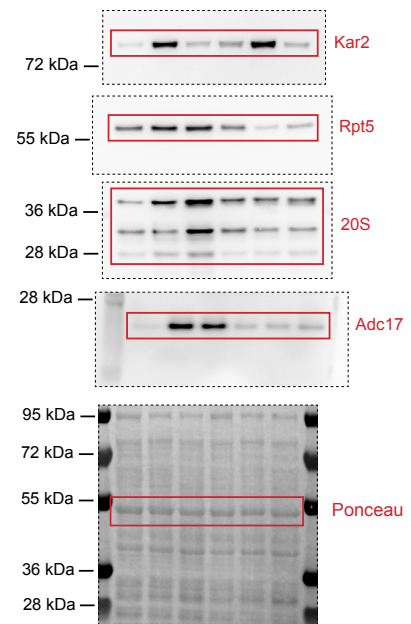
b



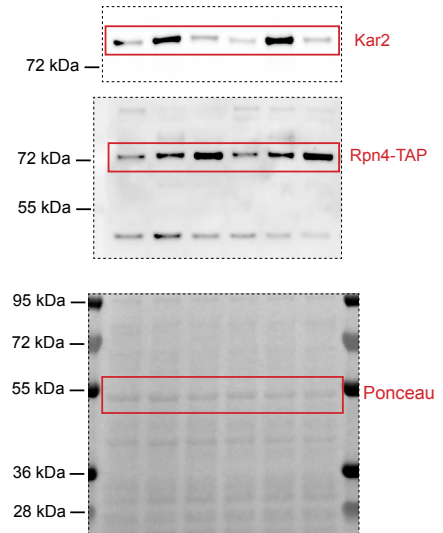
c



d



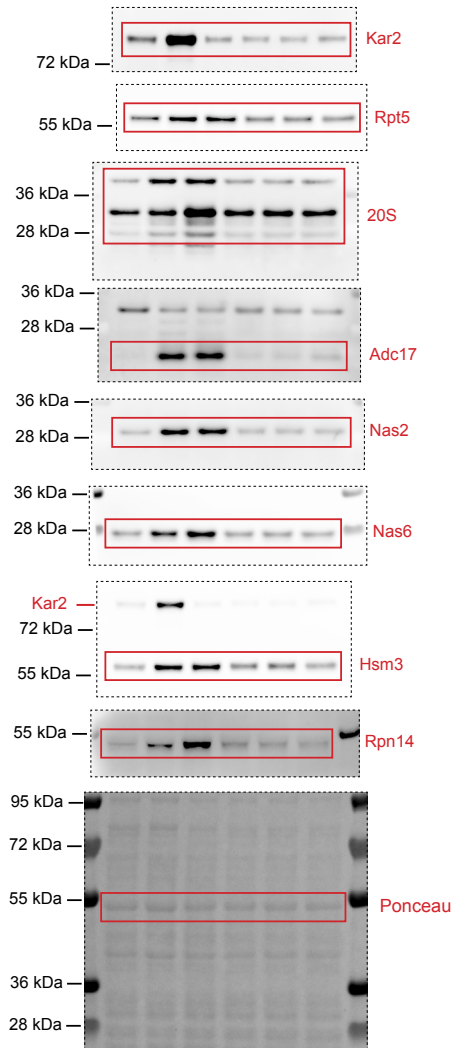
g



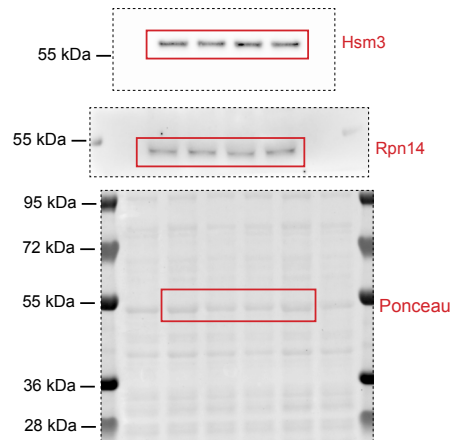
After protein transfer membranes were cut and their fragments were incubated with antibodies against indicated proteins.

Extended Data Figure 6

h

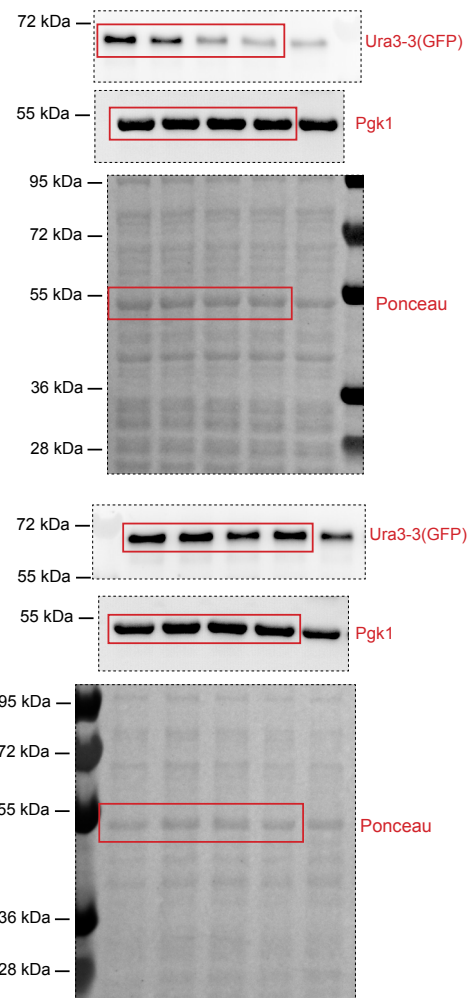


i (next)

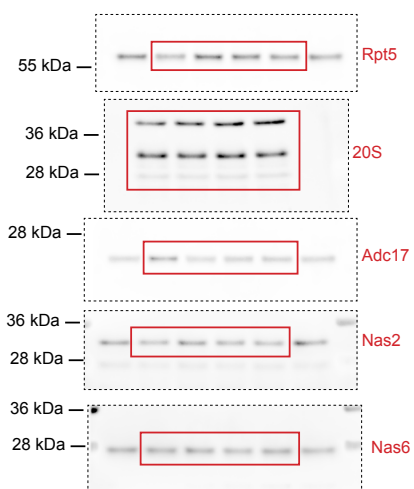


Extended Data Figure 7

a



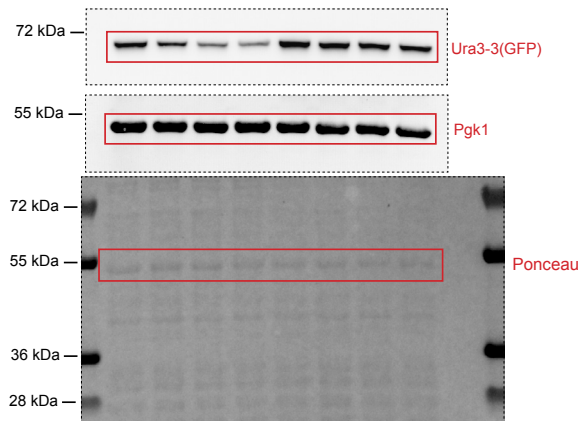
i



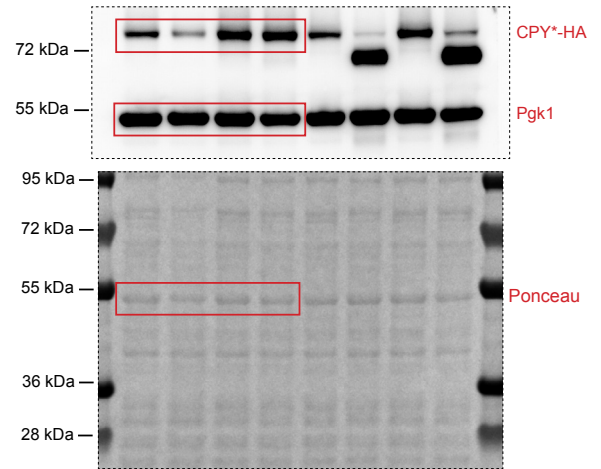
After protein transfer membranes were cut and their fragments were incubated with antibodies against indicated proteins.

Extended Data Figure 7

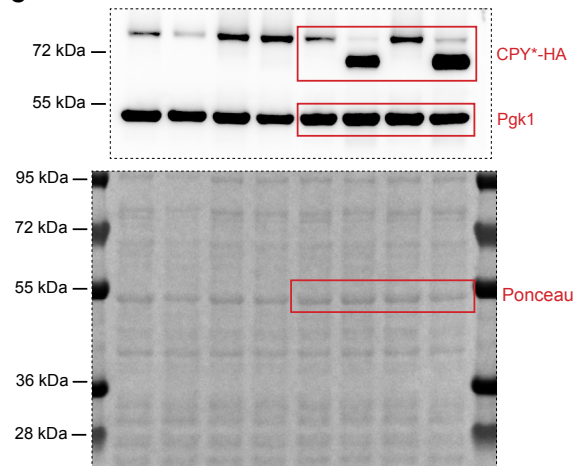
c



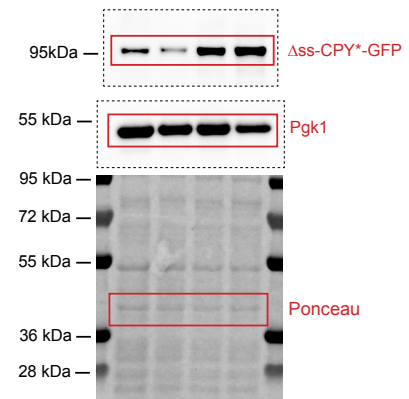
i



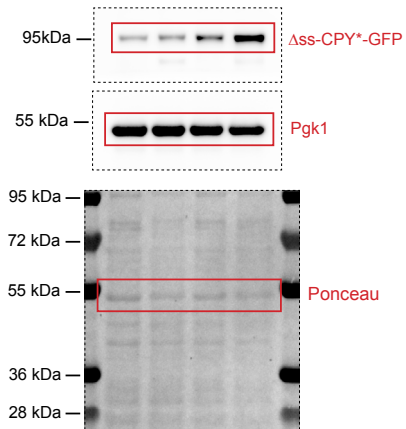
e



k



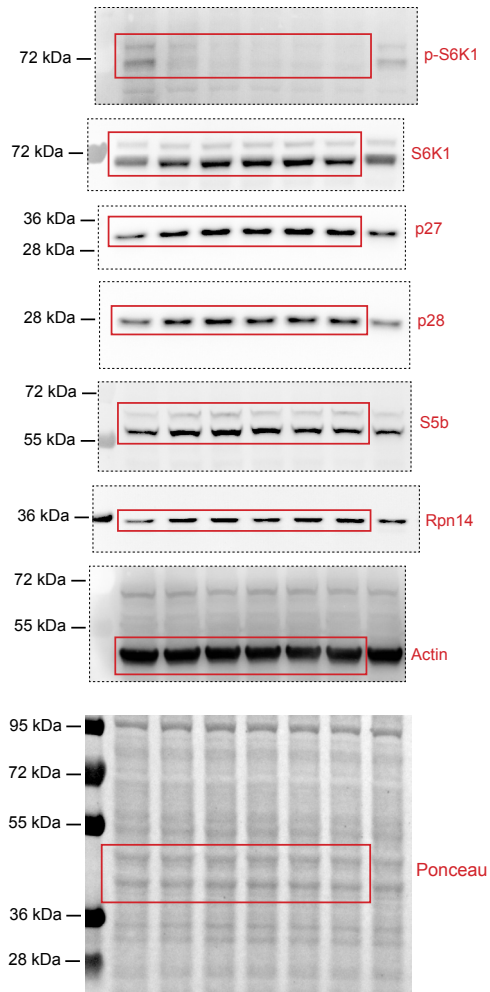
g



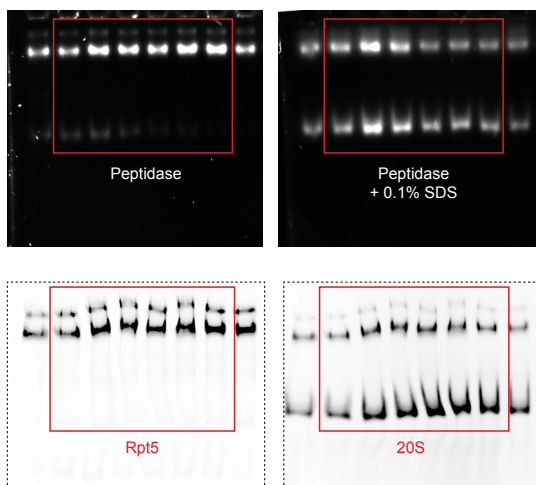
After protein transfer membranes were cut and their fragments were incubated with antibodies against indicated proteins.

Extended Data Figure 8

a

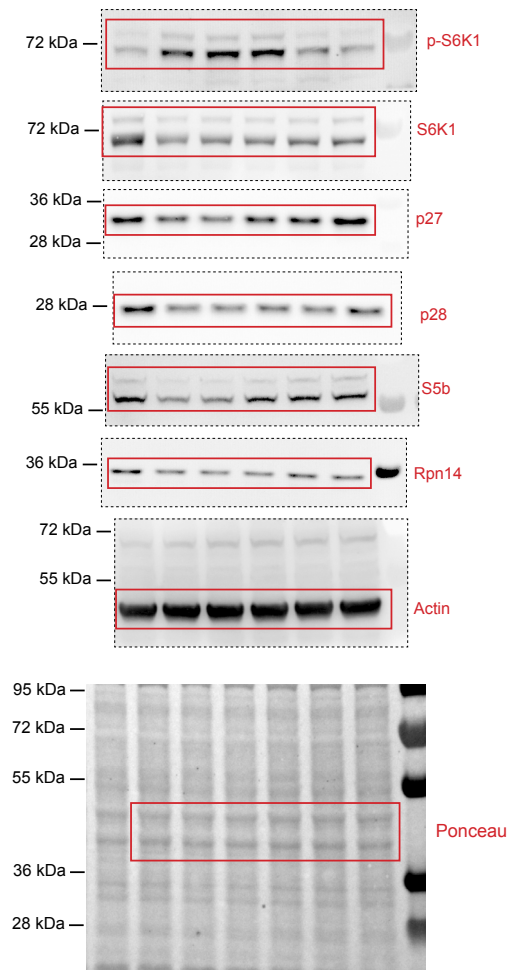


c

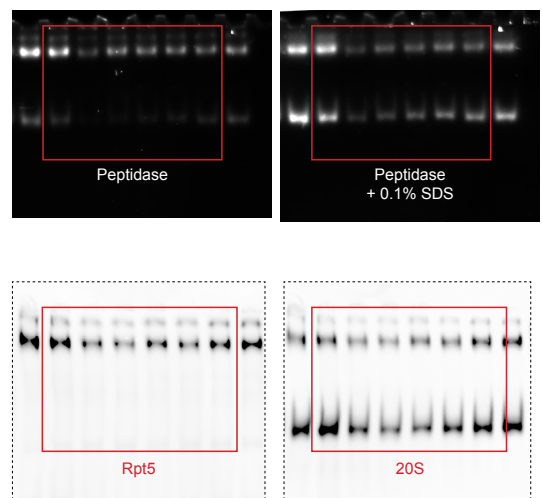


Extended Data Figure 9

a



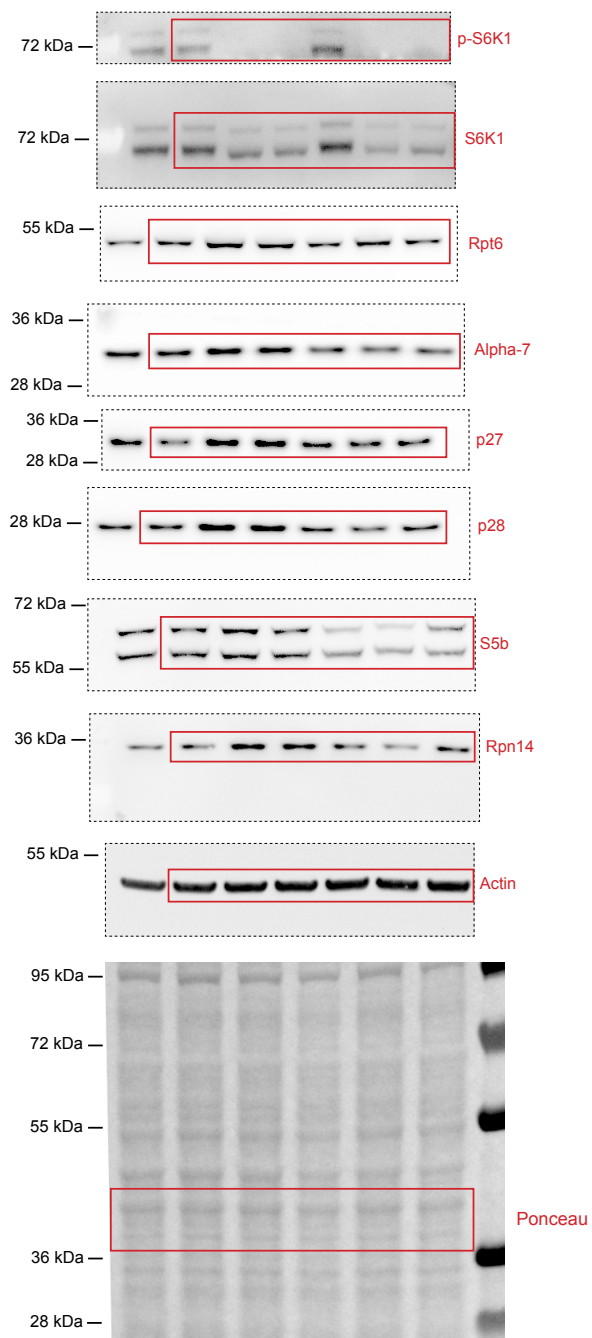
c



After protein transfer membranes were cut and their fragments were incubated with antibodies against indicated proteins.

Extended Data Figure 10

a



After protein transfer membranes were cut and their fragments were incubated with antibodies against indicated proteins.