

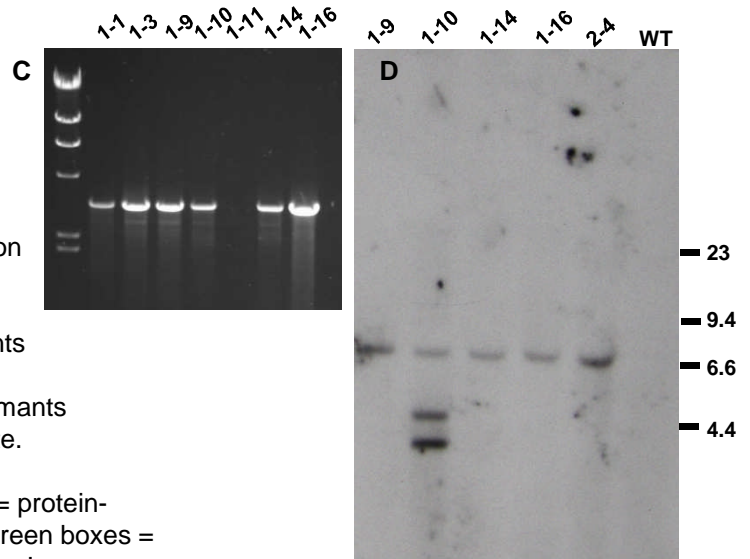
S1 Fig: *Ppctip*-KO

A: Schematic of gene structure and knockout construct.

B: Identification of targeted loci by PCR amplification with cassette-specific “outward” and gene-specific “inward” primers

C: Identification of single-copy targeted transformants with external gene-specific primers

D: Southern blot (*HindIII* digest) to identify transformants containing only a single, targeted selection cassette.



In Supporting Figures S1 Fig – S7 Fig, Red boxes = protein-coding sequence, Blue boxes = 5'- and 3'-UTRs, Green boxes = *NPTII* selection cassette, Red triangles = *LoxP* sites. In Southern blots, the *NPTII* sequence was used as a probe.