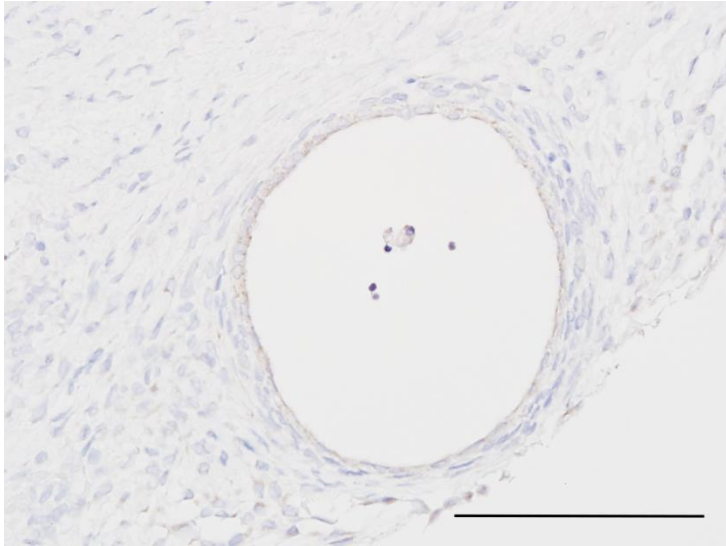
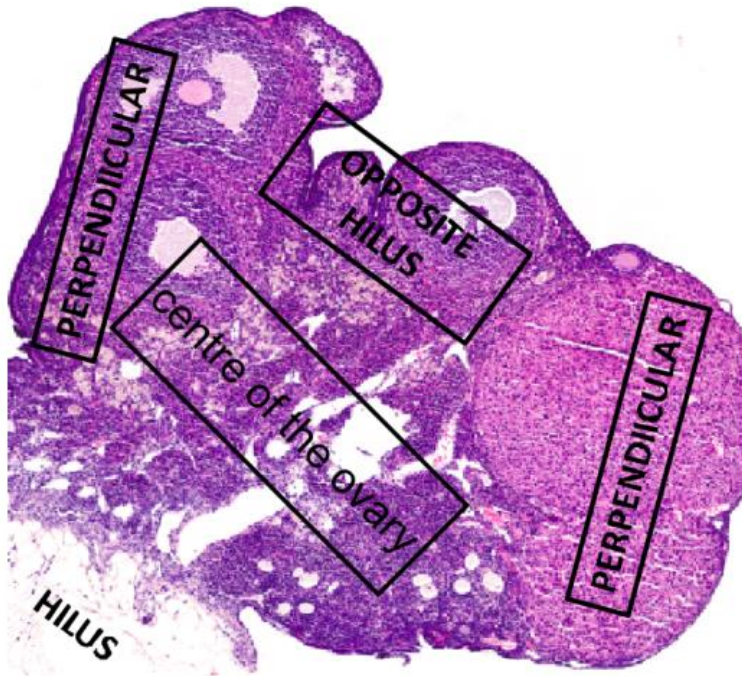


Age related increase in mTOR activity contributes to the pathological changes in ovarian surface epithelium

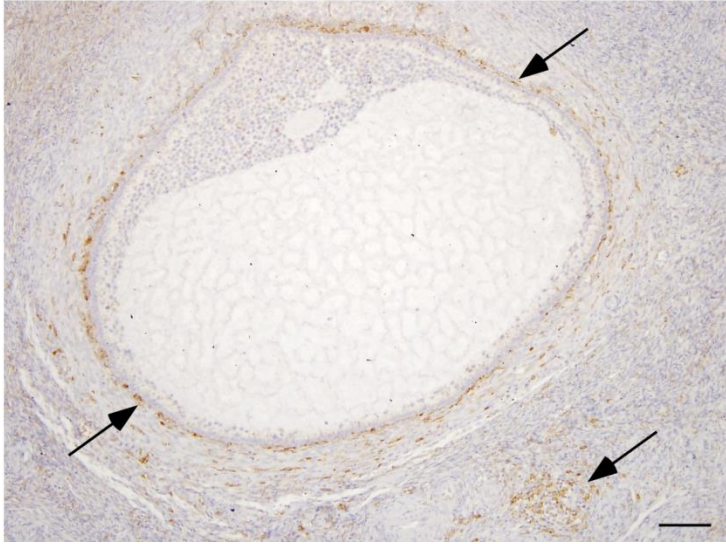
Supplementary Material



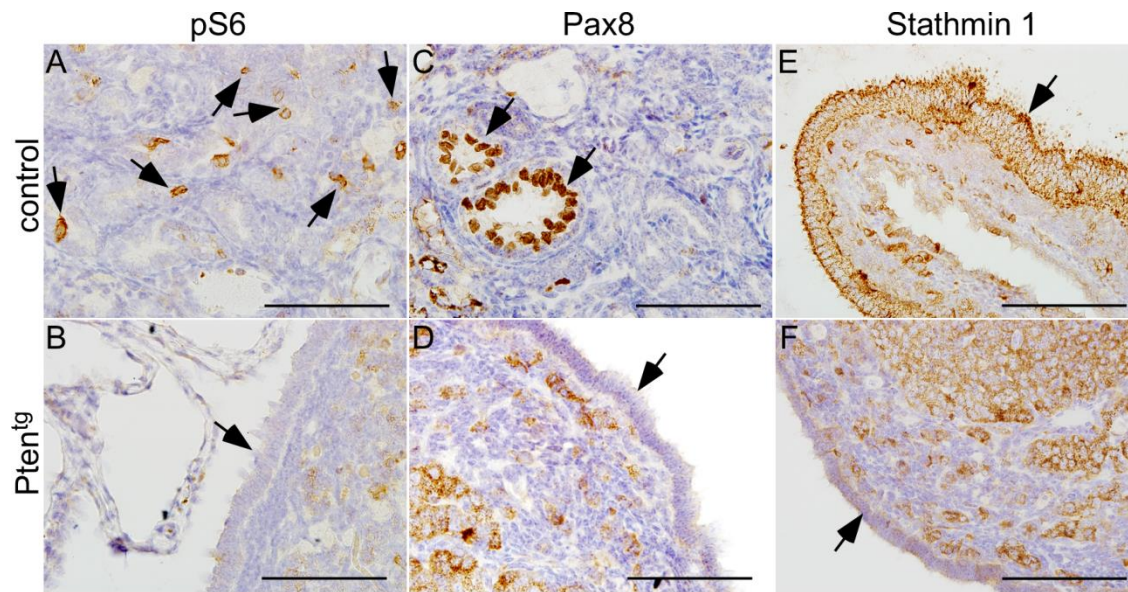
Supp. Fig. 1. No staining was observed in postmenopausal ovarian tissue sections that were exposed to normal IgG. Bars: 100 μ m.



Supp. Fig. 2. Mouse ovaries were divided into four anatomical locations, namely, hilus, perpendicular to the hilus, opposite from the hilus and centre of the ovary, for the assessment of ovarian surface epithelial hyperplasia.



Supp. Fig. 3. A representative section from premenopausal human ovary showing pS6 immunostaining in stromal cells (arrows). Bars: 100 μ m.



Supp. Fig. 4. Analysis of pS6, Pax8 and Stathmin 1 expression in *Pten^{tg}* and control mice ovaries. Arrows in panel A, C and E mark specific staining for these three markers in aged control mice ovaries. OSE (arrow in panel B, D and F) of the *Pten^{tg}* mice showed no expression of these markers. Bars: 100 μ m.