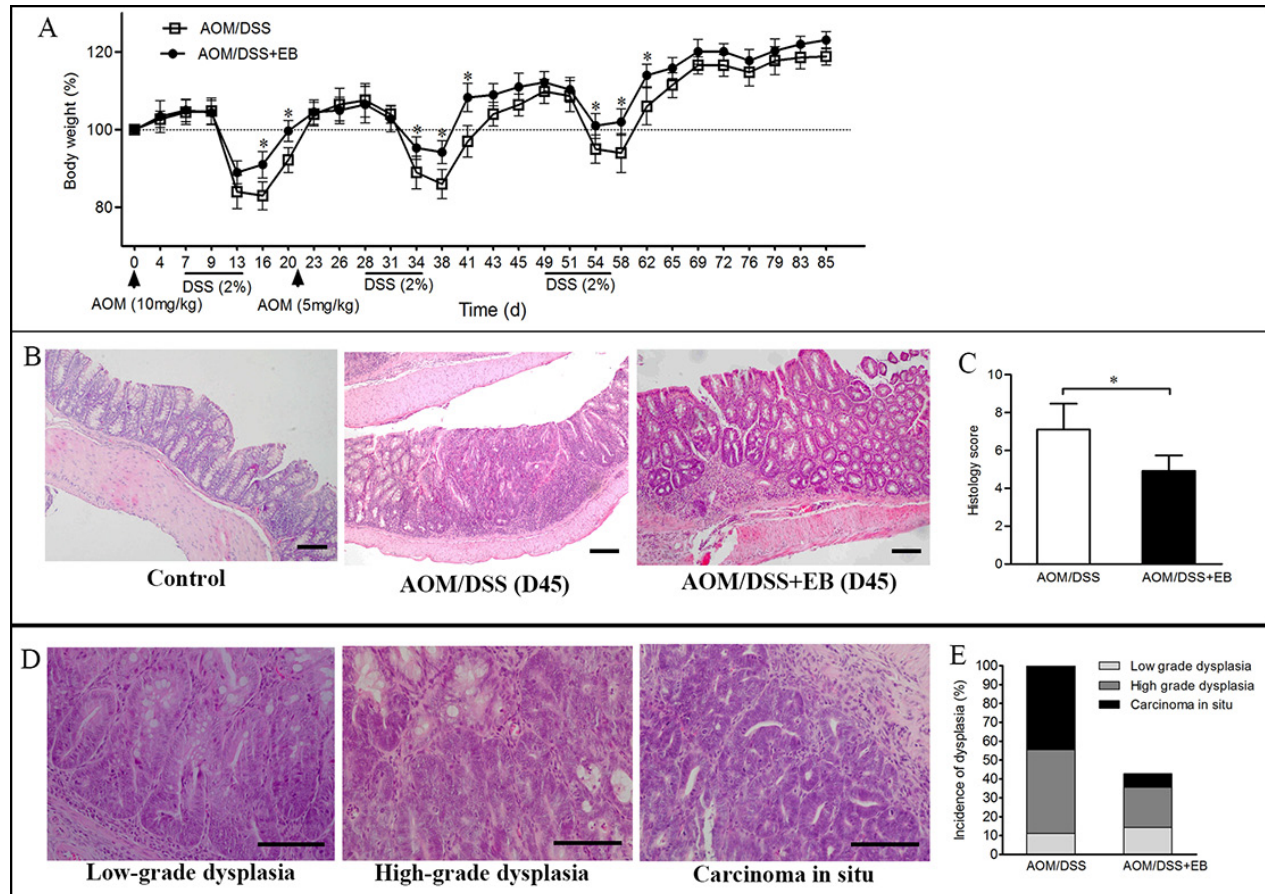


# Macrophage targeting contributes to the inhibitory effects of embelin on colitis-associated cancer

## Supplementary Materials



**Supplementary Figure S1: Embelin (EB) protected mice against colitis and colitis-associated dysplasia during the early stage of CAC.** (A) Body weight changes throughout the study. (B) Representative images of H & E staining of colon section at day 45 after AOM/DSS administration. Scale bar: 50  $\mu$ m. (C) Semiquantitative scoring of histopathology. (D) Representative high magnification images showing dysplasia in colon tissue at day 45 of CAC regimen. Scale bar: 50  $\mu$ m. (E) Overall grading of dysplasia in each group. Data are expressed as mean  $\pm$  SD ( $n = 10-14$ /group;  $*p < 0.05$ ).

**Supplementary Table S1: The sequences of primers used in qPCR assay**

Genes	Sequences	
<i>Arginase1</i>	Forward	5'-CTCCAAGCCAAAGTCCTTAGAG-3'
	Reverse	5'-AGGAGCTGTCATTAGGGACATC-3'
<i>Ccl2</i>	Forward	5'-TTAAAAACCTGGATCGGAACCAA-3'
	Reverse	5'-GCATTAGCTTCAGATTTACGGGT-3'
<i>Cox2</i>	Forward	5'-TGAGCAACTATTCCAAACCAGC-3'
	Reverse	5'-GCACGTAGTCTTCGATCACTATC-3'
<i>Csf1</i>	Forward	5'-ATGAGCAGGAGTATTGCCAAGG-3'
	Reverse	5'-TCCATTCCCAATCATGTGGCTA-3'
<i>Cxcl10</i>	Forward	5'-CCAAGTGCTGCCGTCATTTTC-3'
	Reverse	5'-GGCTCGCAGGGATGATTTCAA-3'
<i>Gm-csf</i>	Forward	5'-GGCCTTGGAAGCATGTAGAGG-3'
	Reverse	5'-GGAGAACTCGTTAGAGACGACTT-3'
<i>Ifn<math>\gamma</math></i>	Forward	5'-ATGAACGCTACACACTGCATC-3'
	Reverse	5'-CCATCCTTTTGCCAGTTCTC-3'
<i>Il-1<math>\beta</math></i>	Forward	5'-GCAACTGTTCTGAACTCAACT-3'
	Reverse	5'-ATCTTTTGGGGTCCGTCAACT-3'
<i>Il-4</i>	Forward	5'-GGTCTCAACCCCCAGCTAGT-3'
	Reverse	5'-GCCGATGATCTCTCTCAAGTGAT-3'
<i>Il-6</i>	Forward	5'-TAGTCCTTCCTACCCCAATTTCC-3'
	Reverse	5'-TTGGTCCTTAGCCACTCCTTC-3'
<i>Il-10</i>	Forward	5'-GCTCTTACTGACTGGCATGAG-3'
	Reverse	5'-CGCAGCTCTAGGAGCATGTG-3'
<i>Il-12</i>	Forward	5'-ACTCTGCGCCAGAAACCTC-3'
	Reverse	5'-CACCTGTGTGATGGTCACGAC-3'
<i>iNos</i>	Forward	5'-GTTCTCAGCCCAACAATACAAGA-3'
	Reverse	5'-GTGGACGGGTCGATGTCAC-3'
<i>Mmp2</i>	Forward	5'-ACCTGAACACTTTCTATGGCTG-3'
	Reverse	5'-CTTCCGCATGGTCTCGATG-3'
<i>Mrc1</i>	Forward	5'-CTCTGTTCACTATTGGACGC-3'
	Reverse	5'-CGGAATTTCTGGGATTCAGCTTC-3'
<i>Tnfa</i>	Forward	5'-CCCTCACACTCAGATCATCTTCT-3'
	Reverse	5'-GCTACGACGTGGGCTACAG-3'
<i>Trem2</i>	Forward	5'-CTGGAACCGTCACCATCACTC-3'
	Reverse	5'-CGAAACTCGATGACTCCTCGG-3'
<i>Ym1</i>	Forward	5'-CAGGTCTGGCAATTCTTCTGAA-3'
	Reverse	5'-GTCTTGCTCATGTGTGTAAGTGA-3'
<i>Gapdh</i>	Forward	5'-AGGTCGGTGTGAACGGATTTG-3'
	Reverse	5'-TGTAGACCATGTAGTTGAGGTCA-3'