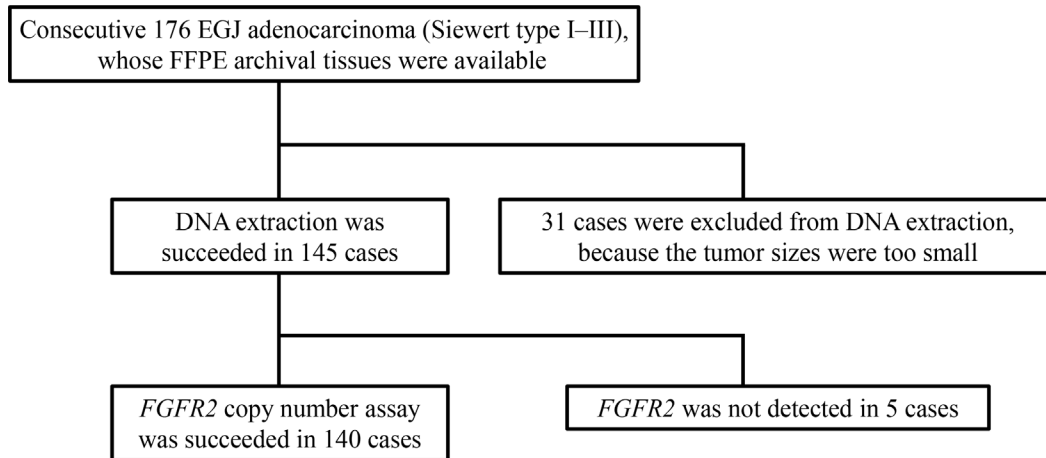
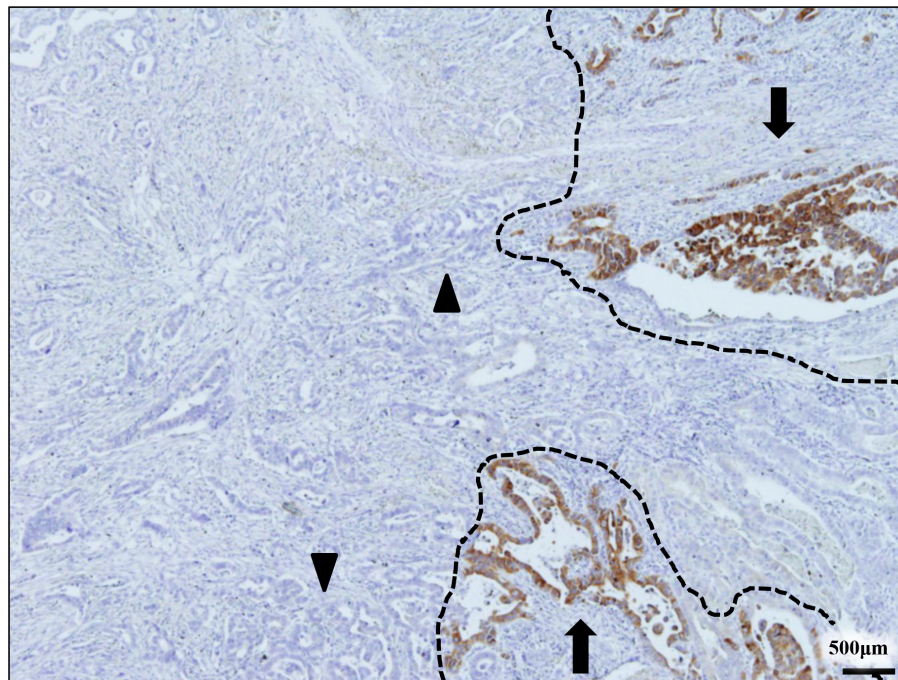


Fibroblast growth factor receptor 2 expression, but not its genetic amplification, is associated with tumor growth and worse survival in esophagogastric junction adenocarcinoma

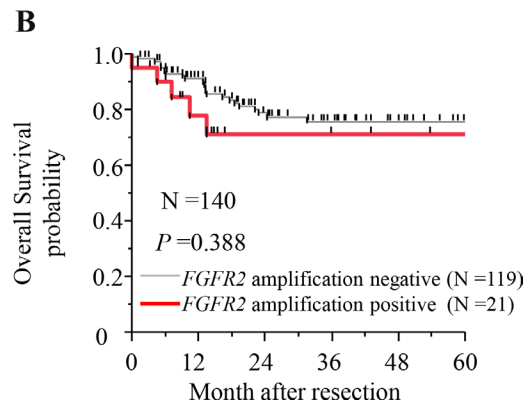
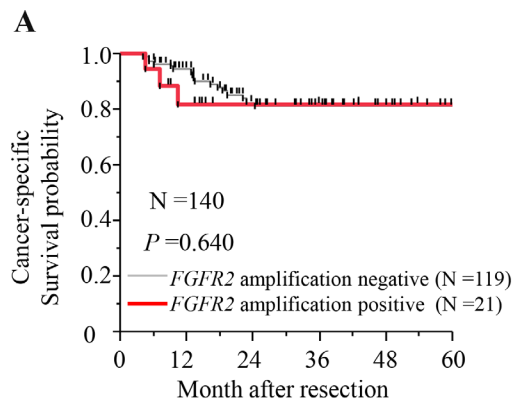
Supplementary Materials



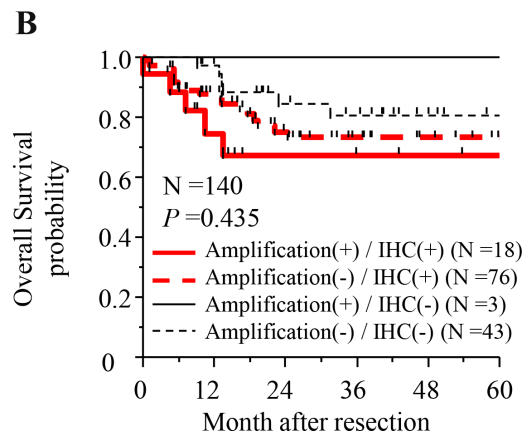
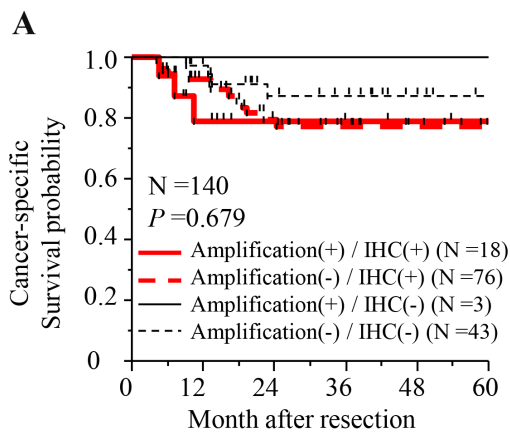
Supplementary Figure S1: Flow chart showing the inclusion/exclusion criteria for copy number assay and immunohistochemical staining.



Supplementary Figure S2: Heterogeneous *FGFR2* expression in EGJ adenocarcinoma. The tumor cells area surrounded by dotted lines are negative for *FGFR2* expression. The arrows show *FGFR2* positive cancer cells. The arrowheads show *FGFR2* negative cancer cells.



Supplementary Figure S3: Patient outcomes in cases of positive (red) and negative (gray) *FGFR2* amplification (N = 140). (A) cancer-specific survival; (B) overall survival.



Supplementary Figure S4: Patient outcomes according to combinations of *FGFR2* amplification and *FGFR2* IHC status (N = 140). (A) cancer-specific survival; (B) overall survival.

Supplementary Table S1: Primer sequences used in qRT-PCR of mRNA

Gene	Primer sequence
<i>FGFR2</i>	F 5'-GGACCCAAAATGGGAGTTTC-3'
	R 5'-ACCACTTGCCCAAAGCAA-3'
<i>HPRT-1</i>	F 5'-TGACCTTGATTATTTTGCATACC-3'
	R 5'-CGAGCAAGACGTTTCAGTCCT-3'

Supplementary Table S2: Univariate and multivariate logistic analysis of *FGFR2* amplification status in EGJ adenocarcinoma patients with tumor resection

Factors	<i>FGFR2</i> amplification positive status (%)	Univariate analysis			Multivariate analysis			
		OR	95% CI	<i>P</i> value	OR	95% CI	<i>P</i> value	
Age	≥ 70/< 70	9 (14%)/12 (16%)	0.82	0.31–2.07	0.669	0.71	0.25–1.95	0.511
Sex	Male/female	17 (15%)/4 (15%)	1.02	0.34–3.79	0.976	1.21	0.31–3.93	0.760
Siewert classification	I–II/III	13 (15%)/8 (15%)	1.01	0.37–2.59	0.981	1.02	0.38–2.85	0.971
Tumor depth	T2–T4/T1	15 (15%)/6 (14%)	1.13	0.42–3.37	0.816	1.08	0.31–3.94	0.903
Lymph node metastasis	Positive/negative	12 (18%)/9 (12%)	1.66	0.65–4.35	0.286	1.90	0.63–6.13	0.256
Distant metastasis	Positive/negative	2 (15%)/19 (15%)	1.03	0.15–4.26	0.968	1.04	0.22–7.58	0.961
Histopathological type	Poorly/well-moderate	4 (9%)/17 (18%)	0.48	0.13–1.41	0.192	0.38	0.10–1.21	0.104

In multiple-hypothesis testing, the significant *P*-value was adjusted to $P = 0.05/14 = 0.004$. Thus, a *P* value between 0.05 and 0.004 should be regarded as borderline significant.

CI, confidence interval; *EGJ*, esophagogastric junction; *FGFR2*, fibroblast growth factor receptor 2; *OR*, odds ratio $N = 176$.