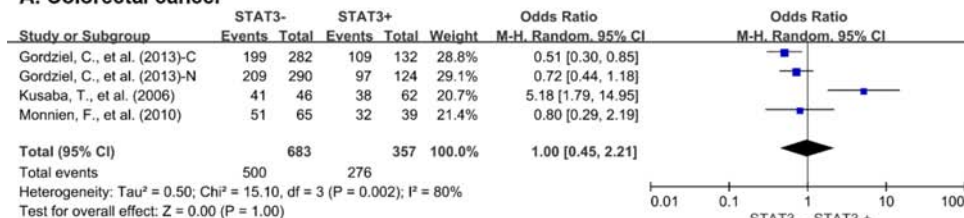


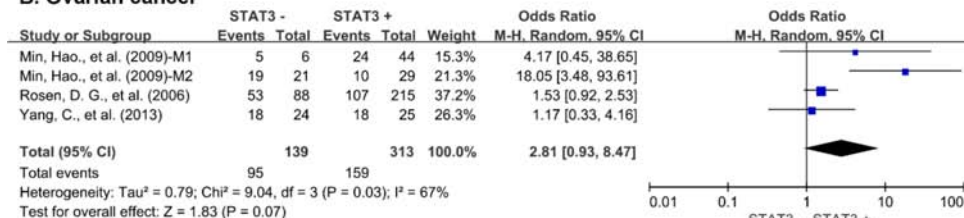
Prognostic role of STAT3 in solid tumors: a systematic review and meta-analysis

Supplementary Materials

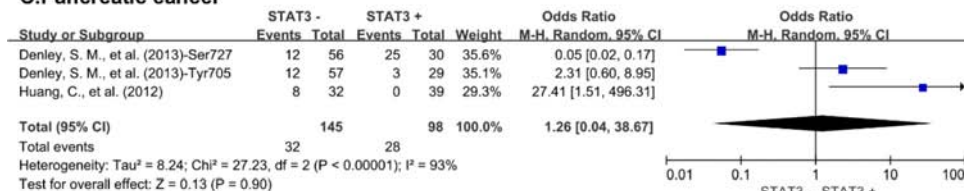
A. Colorectal cancer



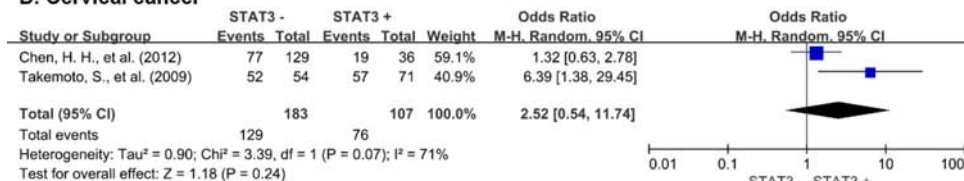
B. Ovarian cancer



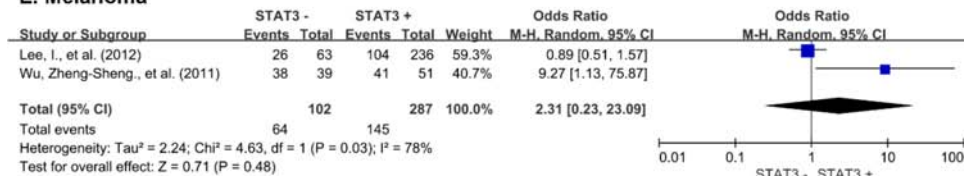
C. Pancreatic cancer



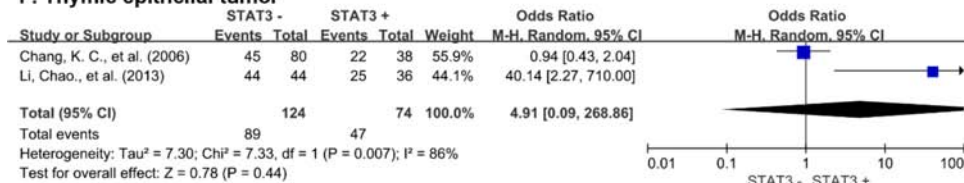
D. Cervical cancer



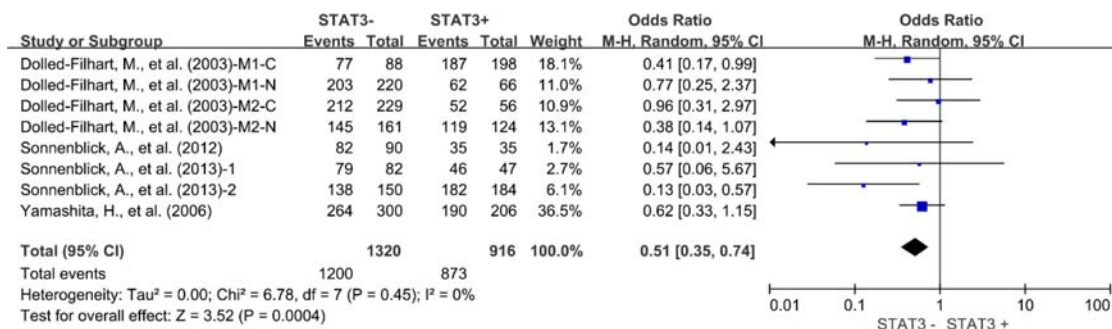
E. Melanoma



F. Thymic epithelial tumor

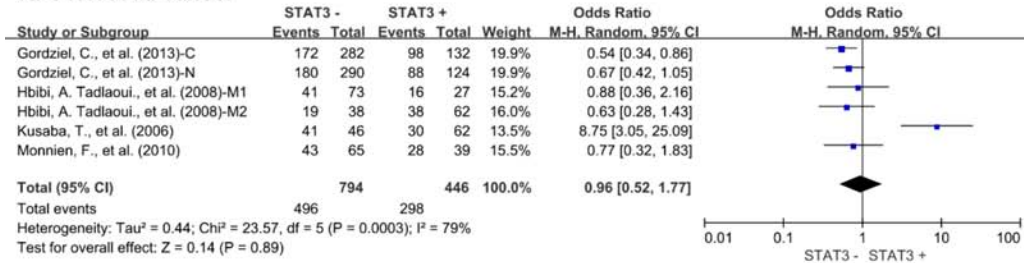


Supplementary Figure S1: Subgroup analysis of 3-year OS by STAT3 expression in different tumor types. (A) colorectal cancer; (B) ovarian cancer; (C) pancreatic cancer; (D) cervical cancer; (E) melanoma; (F) thymic epithelial tumor. M1: Marker 1, STAT3; M2: Marker 2, p-STAT3; N: nuclear expression; C: cytoplasmic expression.

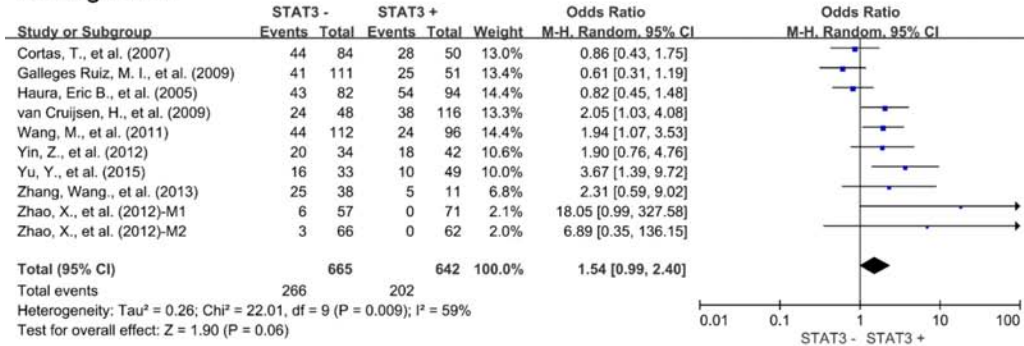


Supplementary Figure S2: Subgroup analysis of 3-year OS by STAT3 expression in breast cancer. M1: Marker 1, STAT3; M2: Marker 2, p-STAT3; N: nuclear expression; C: cytoplasmic expression.

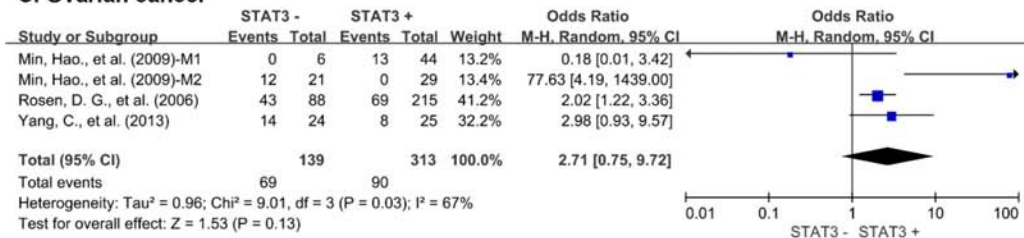
A. Colorectal cancer



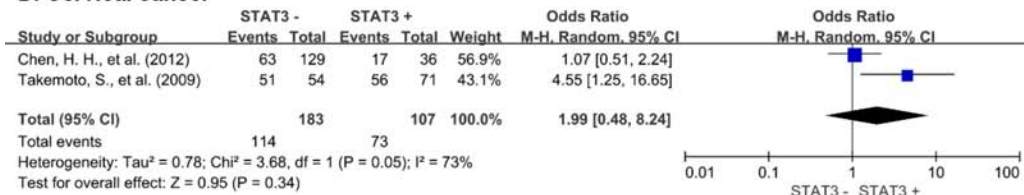
B. Lung cancer



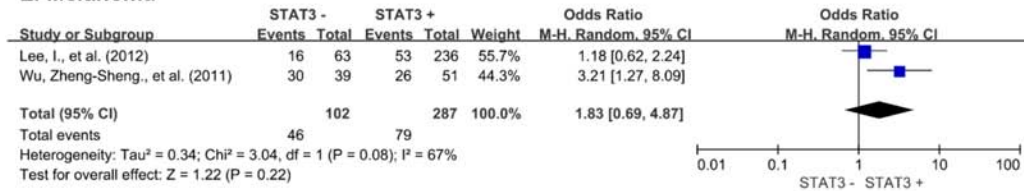
C. Ovarian cancer



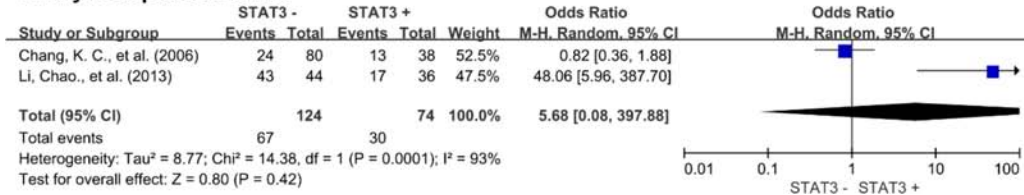
D. Cervical cancer



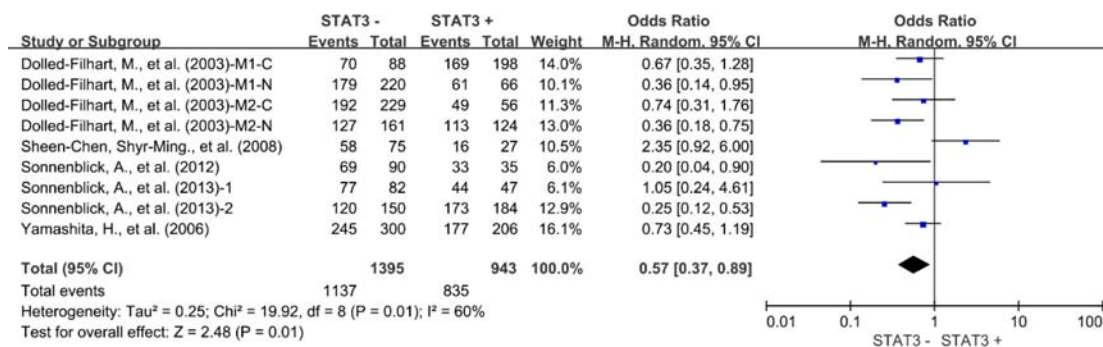
E. Melanoma



F. Thymic epithelial tumor

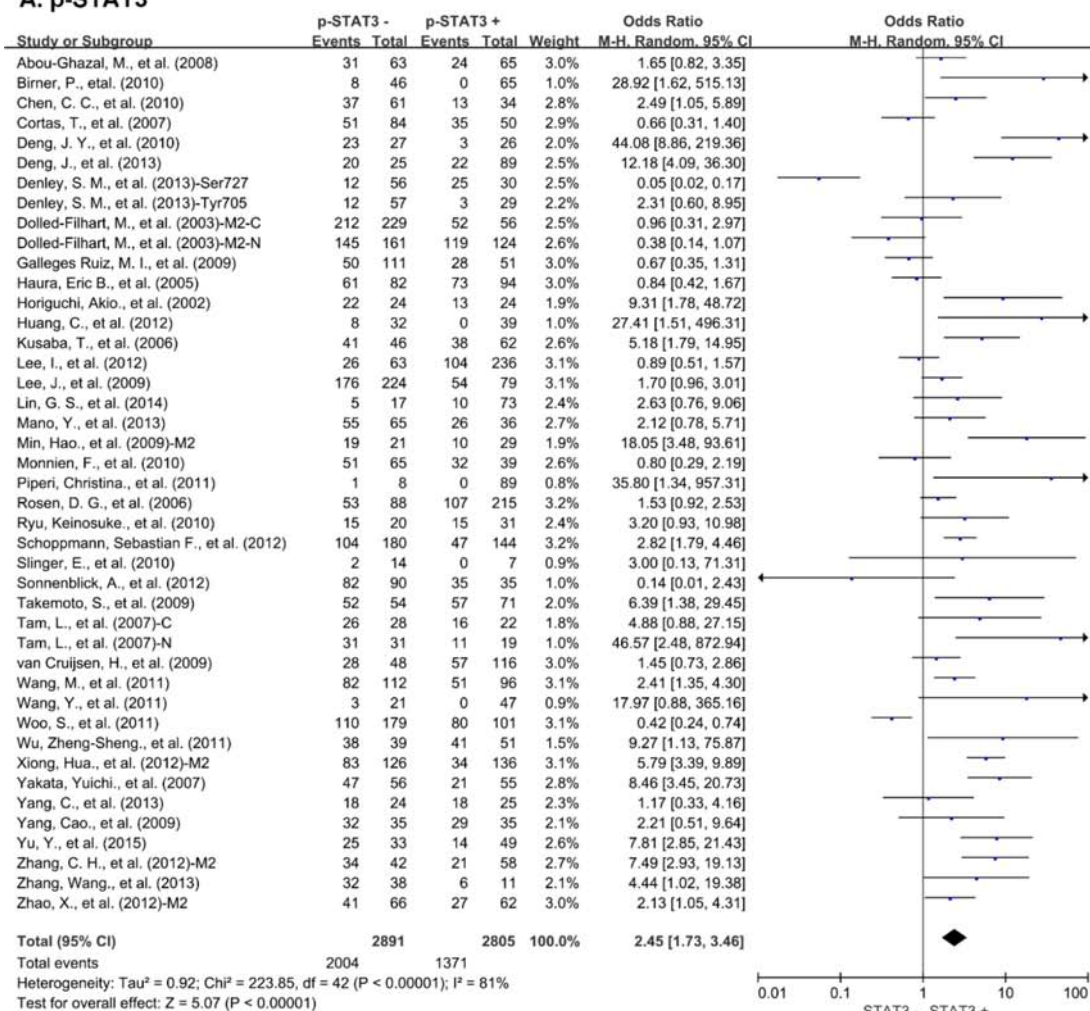


Supplementary Figure S3: Subgroup analysis of 5-year OS by STAT3 expression in different tumor types. (A) colorectal cancer; (B) lung cancer; (C) ovarian cancer; (D) cervical cancer; (E) melanoma; (F) thymic epithelial tumor. M1: Marker 1, STAT3; M2: Marker 2, p-STAT3; N: nuclear expression; C: cytoplasmic expression.

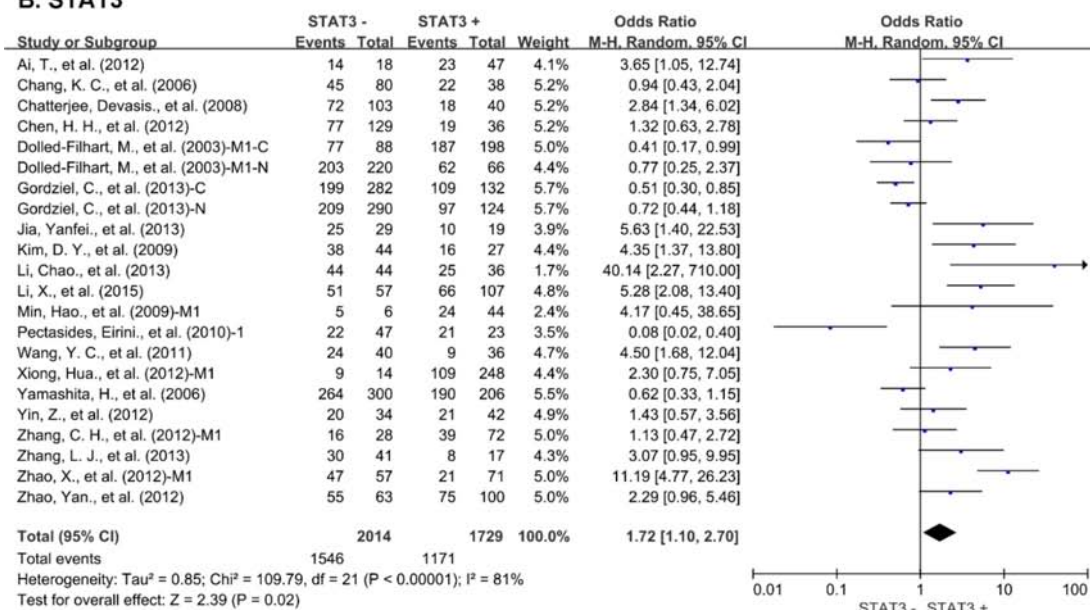


Supplementary Figure S4: Subgroup analysis of 5-year OS by STAT3 expression in breast cancer. M1: Marker 1, STAT3; M2: Marker 2, p-STAT3; N: nuclear expression; C: cytoplasmic expression.

A. p-STAT3

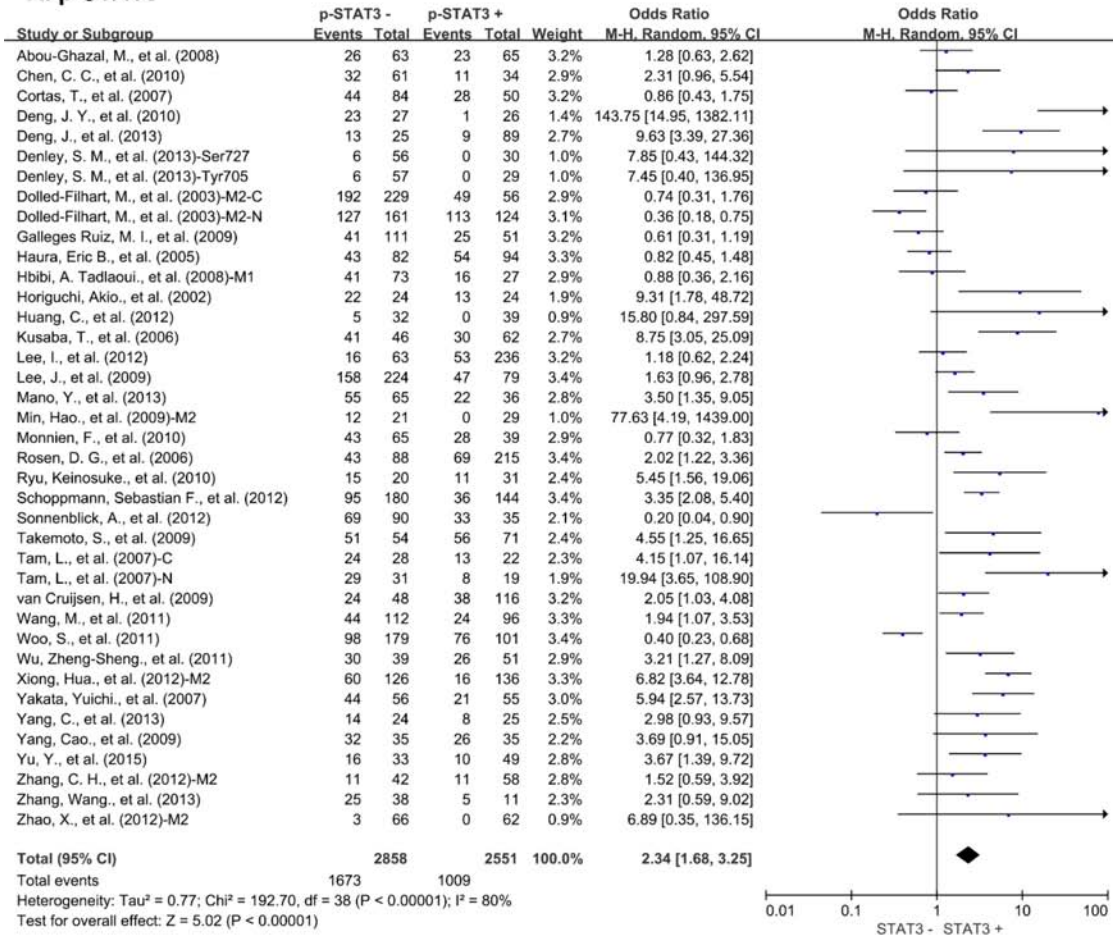


B. STAT3

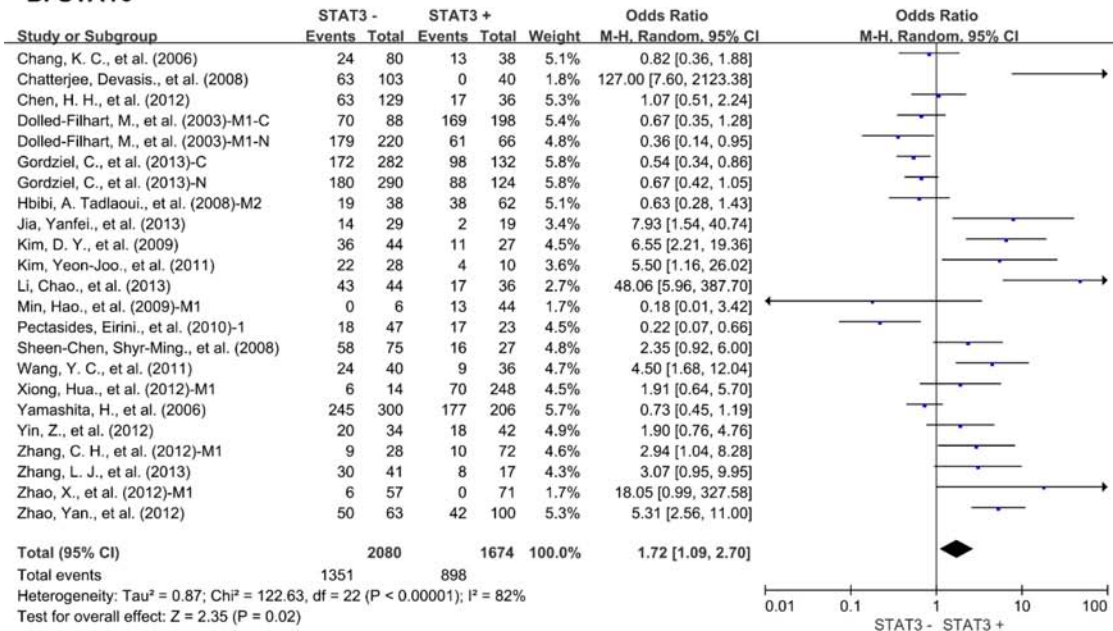


Supplementary Figure S5: Subgroup analysis of 3-year OS according to STAT3 and p-STAT3 expression in solid tumors. (A) p-STAT3; (B) STAT3; M1: Marker 1, STAT3; M2: Marker 2, p-STAT3; 1: Cohort 1; 2: Cohort 2; N: nuclear expression; C: cytoplasmic expression.

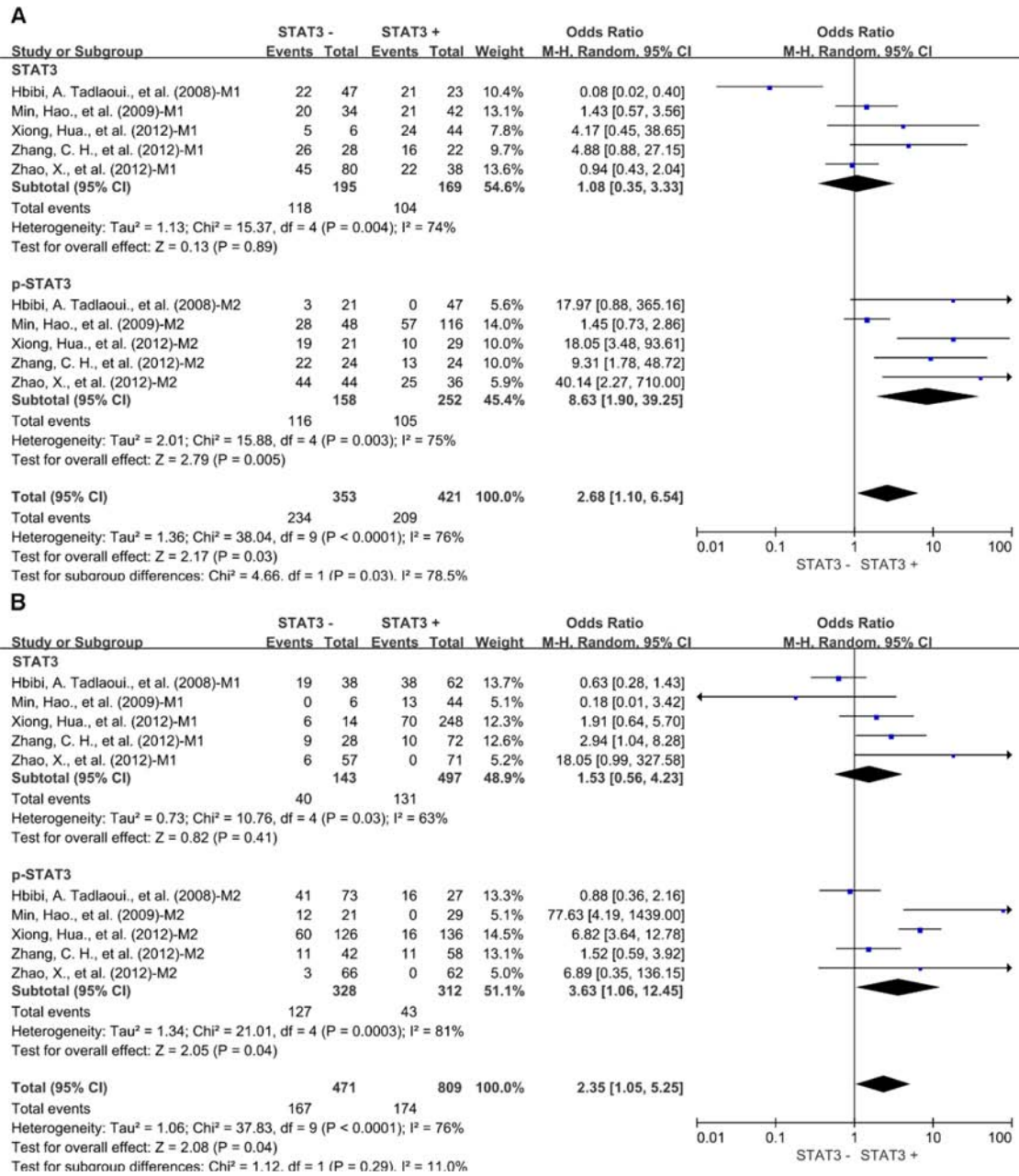
A. p-STAT3



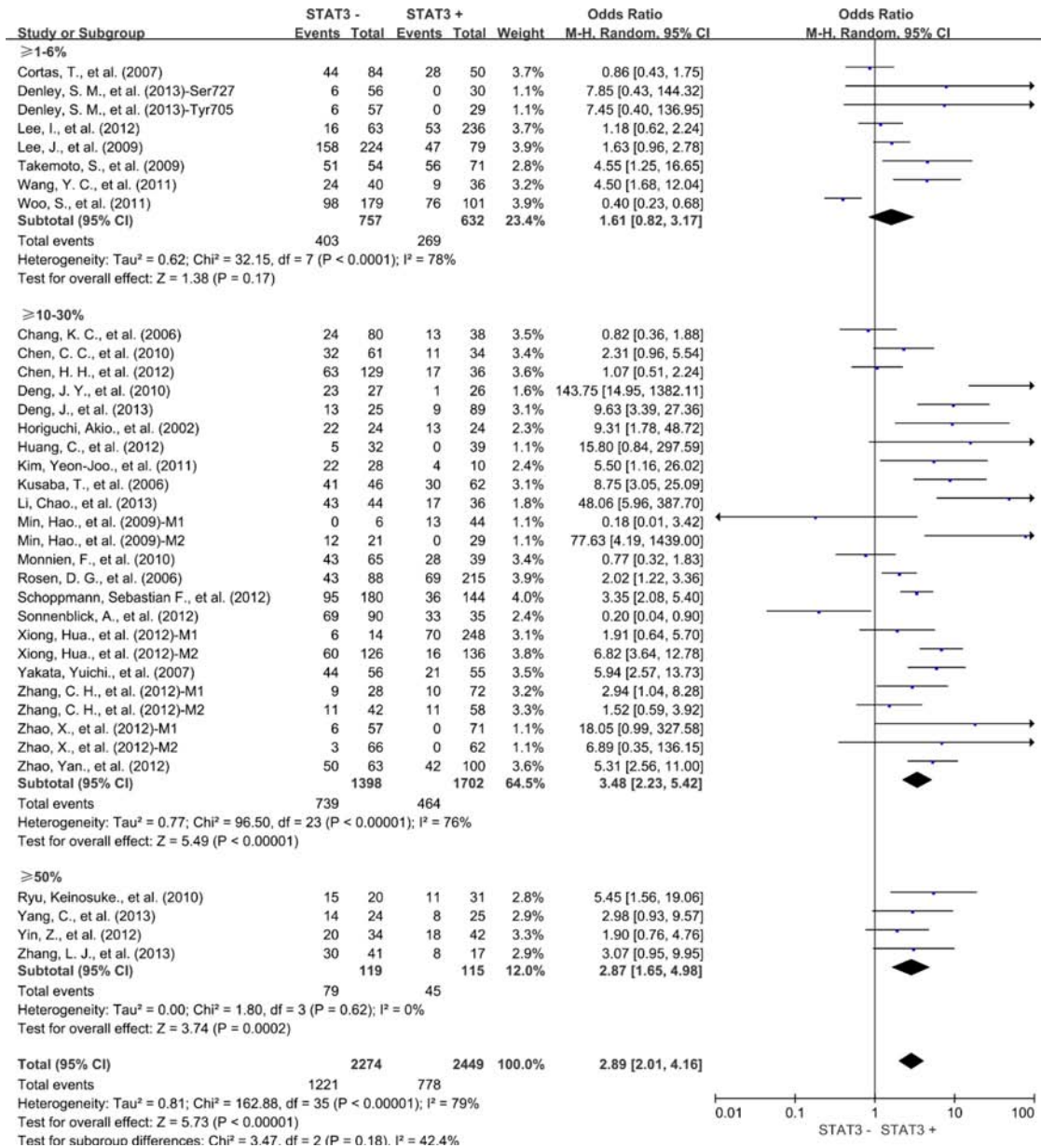
B. STAT3



Supplementary Figure S6: Subgroup analysis of 5-year OS according to STAT3 and p-STAT3 expression in solid tumors. (A) p-STAT3; (B) STAT3; M1: Marker 1, STAT3; M2: Marker 2, p-STAT3; 1: Cohort 1; 2: Cohort 2; N: nuclear expression; C: cytoplasmic expression.



Supplementary Figure S7: Subgroup analysis of OS according to STAT3 and p-STAT3 expression in studies evaluated both STAT3 and p-STAT3. (A) 3-year OS; (B) 5-year OS; M1: Marker 1, STAT3; M2: Marker 2, p-STAT3; N: nuclear expression; C: cytoplasmic expression.



Supplementary Figure S8: Subgroup analysis the correlation between STAT3 overexpression and 5-year OS according to cut-off values determining STAT3 positivity. M1: Marker 1, STAT3; M2: Marker 2, p-STAT3.