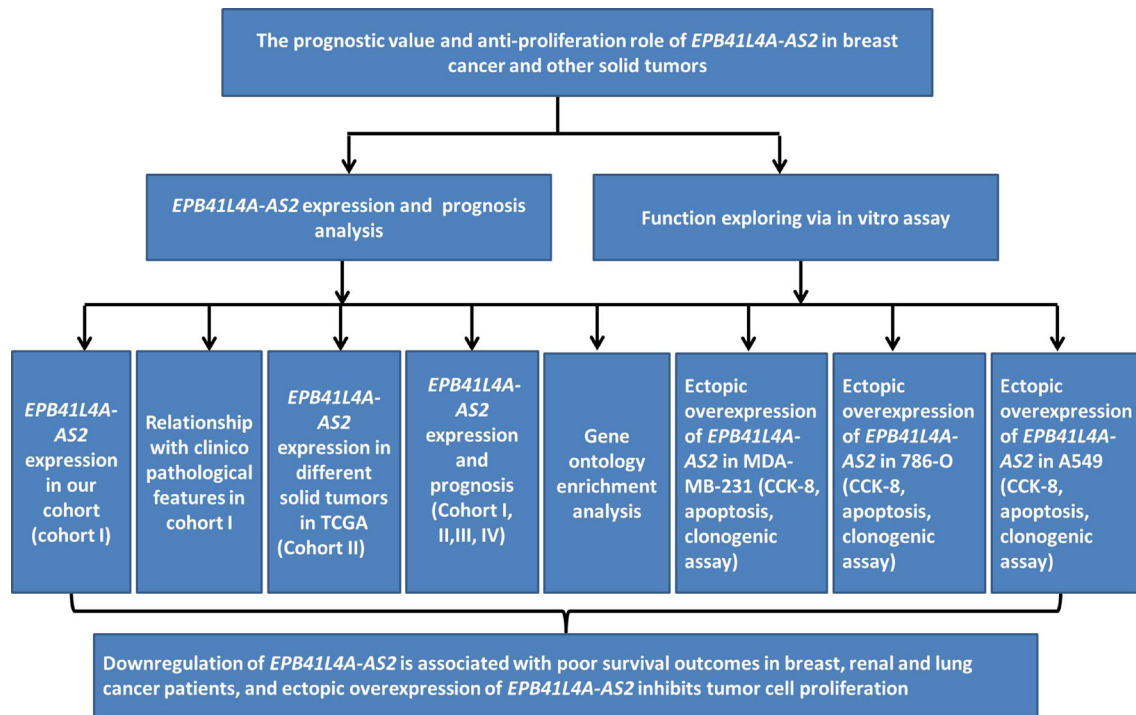
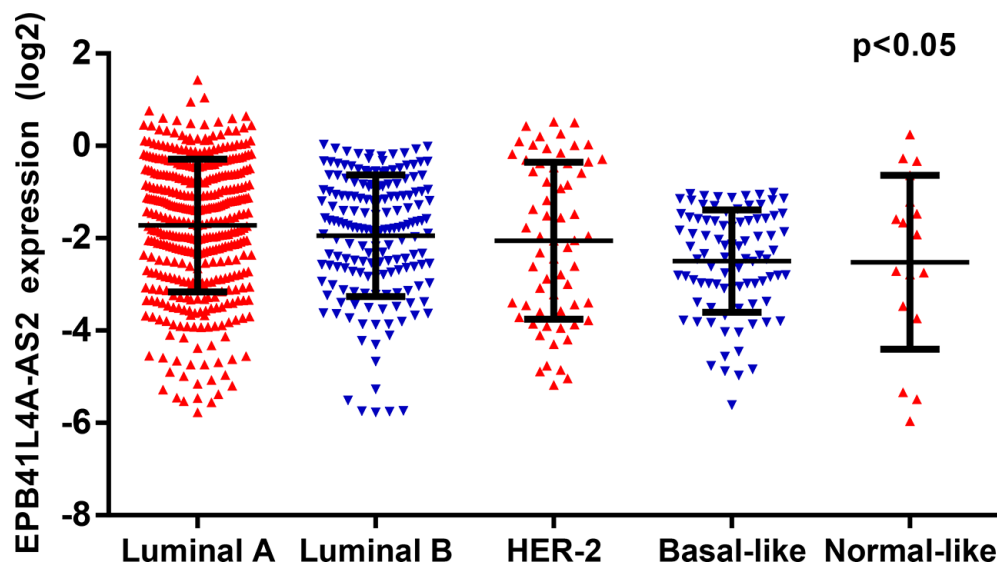


# The long non-coding RNA *EPB41L4A-AS2* inhibits tumor proliferation and is associated with favorable prognoses in breast cancer and other solid tumors

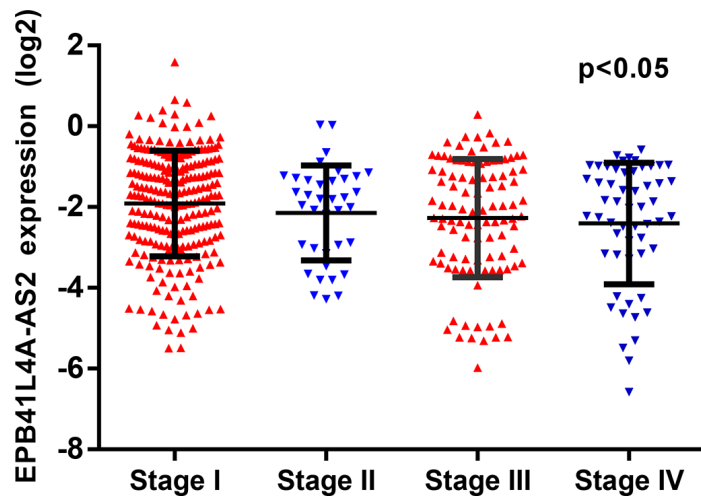
## Supplementary Materials



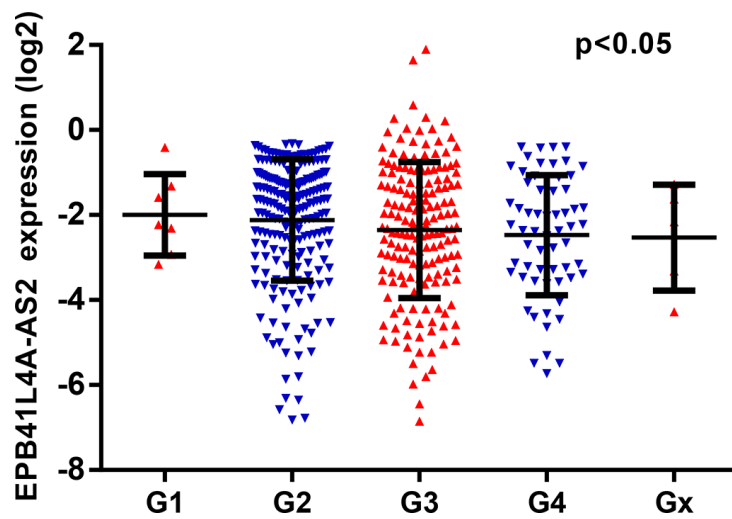
Supplementary Figure S1: Flow chart of this study.



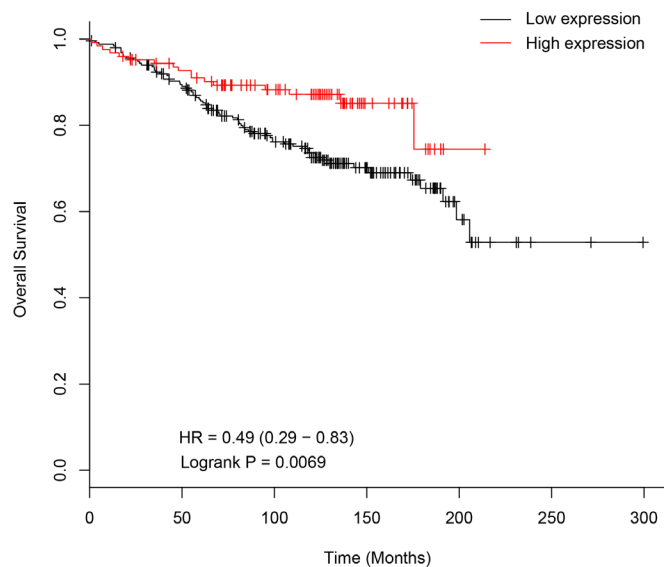
Supplementary Figure S2: *EPB41L4A-AS2* expression in five different molecular subtype breast cancer tissues.



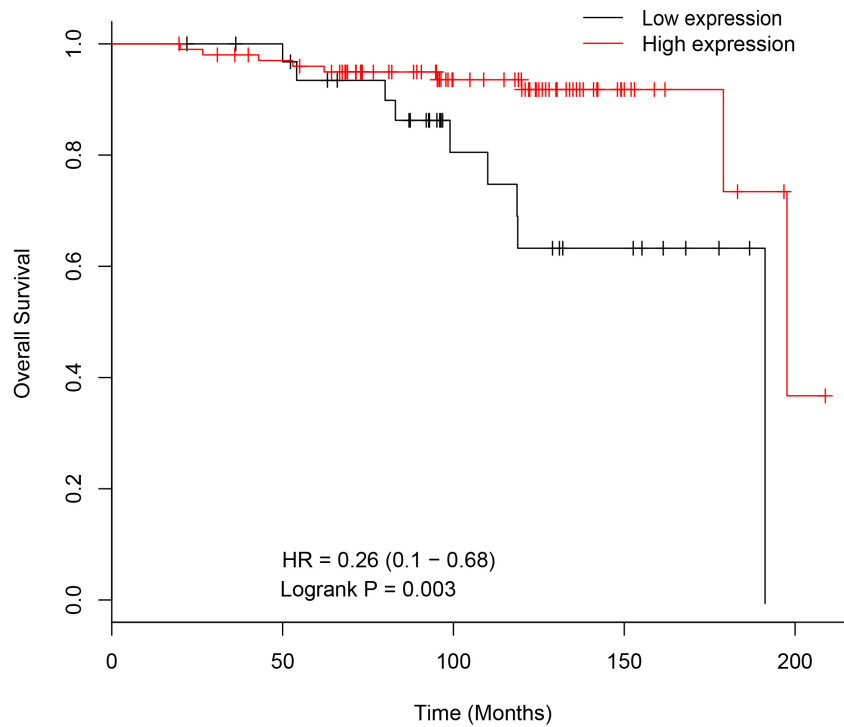
Supplementary Figure S3: *EPB41L4A-AS2* expression in renal cancer with different stage.



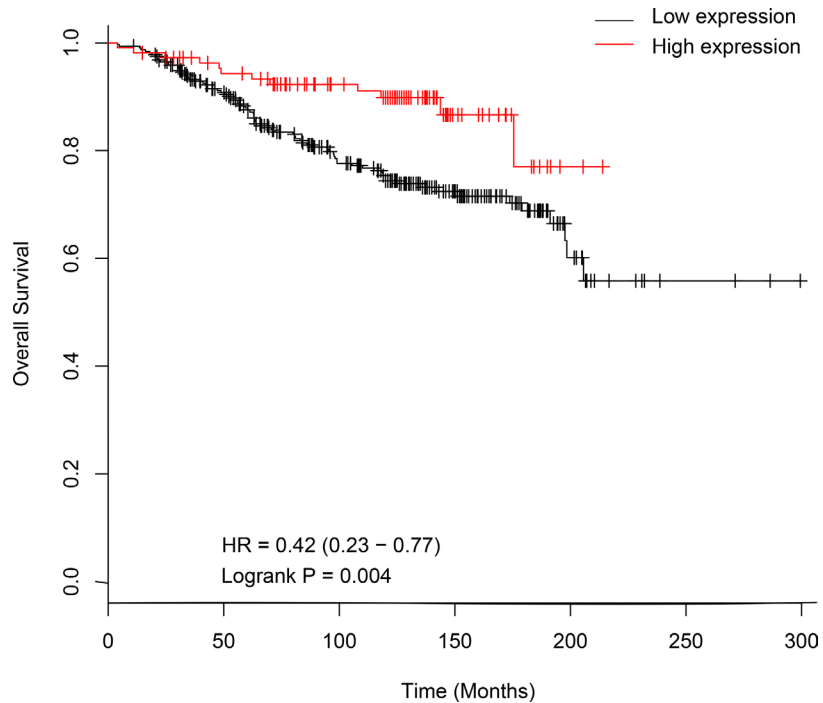
Supplementary Figure S4: *EPB41L4A-AS2* expression in renal cancer with different grade.



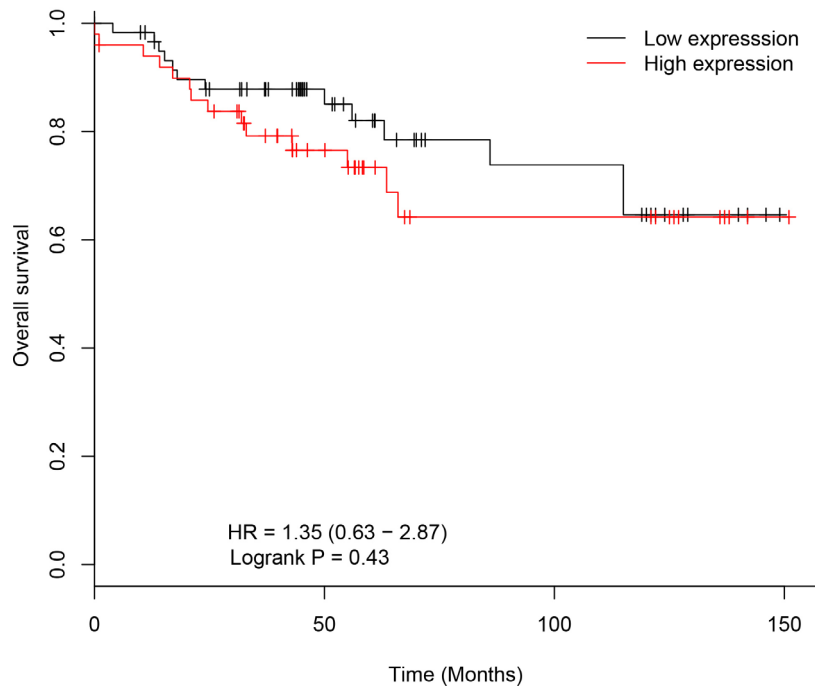
Supplementary Figure S5: High *EPB41L4A-AS2* expression was associated with better OS than low expression in patients with ER positive breast cancer in cohort III ( $N = 377$ ).



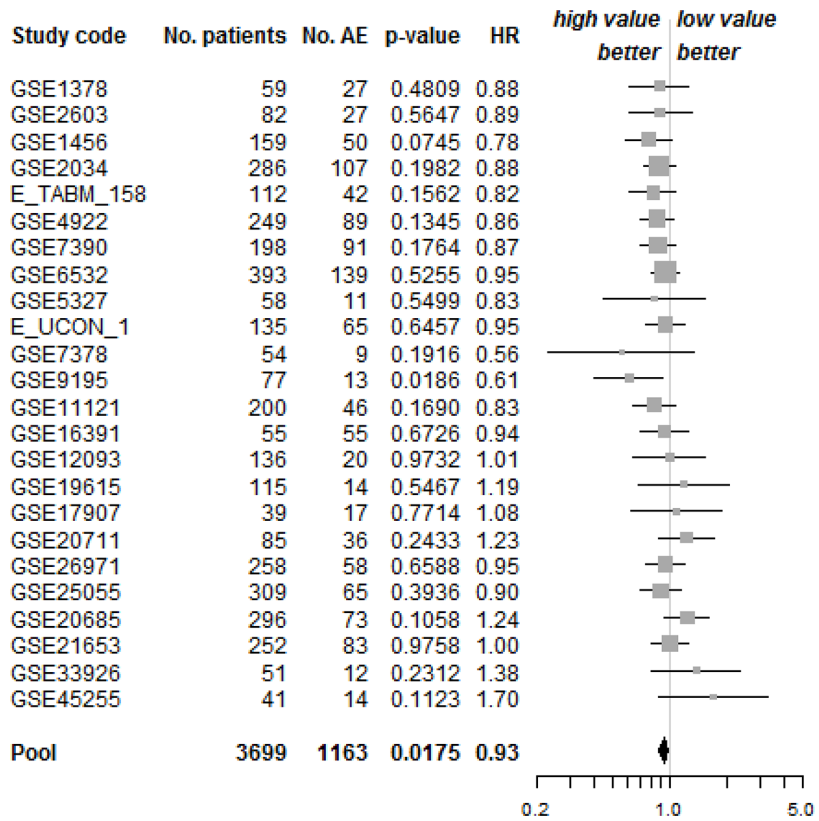
**Supplementary Figure S6: High *EPB41L4A-AS2* expression was associated with better OS than low expression in patients with low tumor grade in cohort III ( $N = 135$ ).**



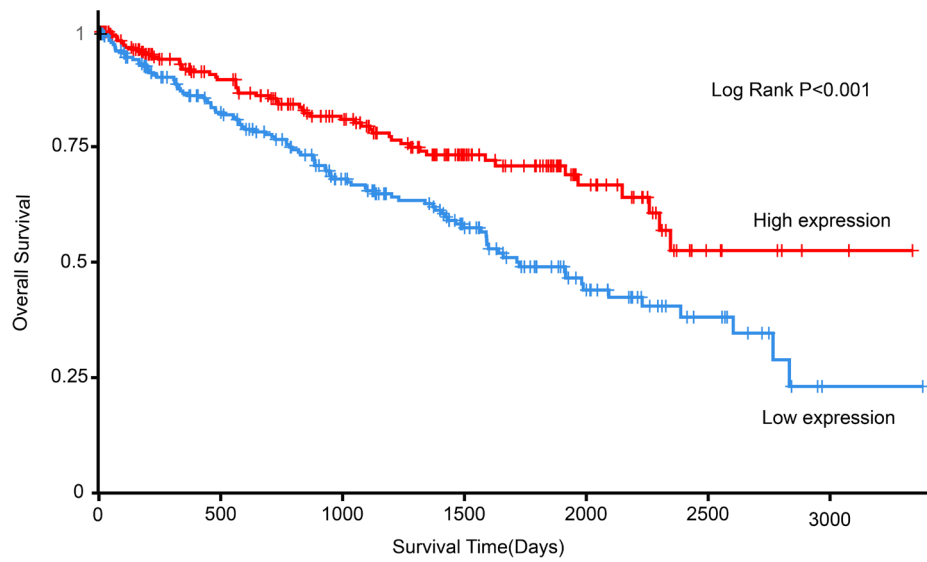
**Supplementary Figure S7: High *EPB41L4A-AS2* expression was associated with better OS than low expression in patients with uninvolved lymph nodes in cohort III ( $N = 425$ ).**



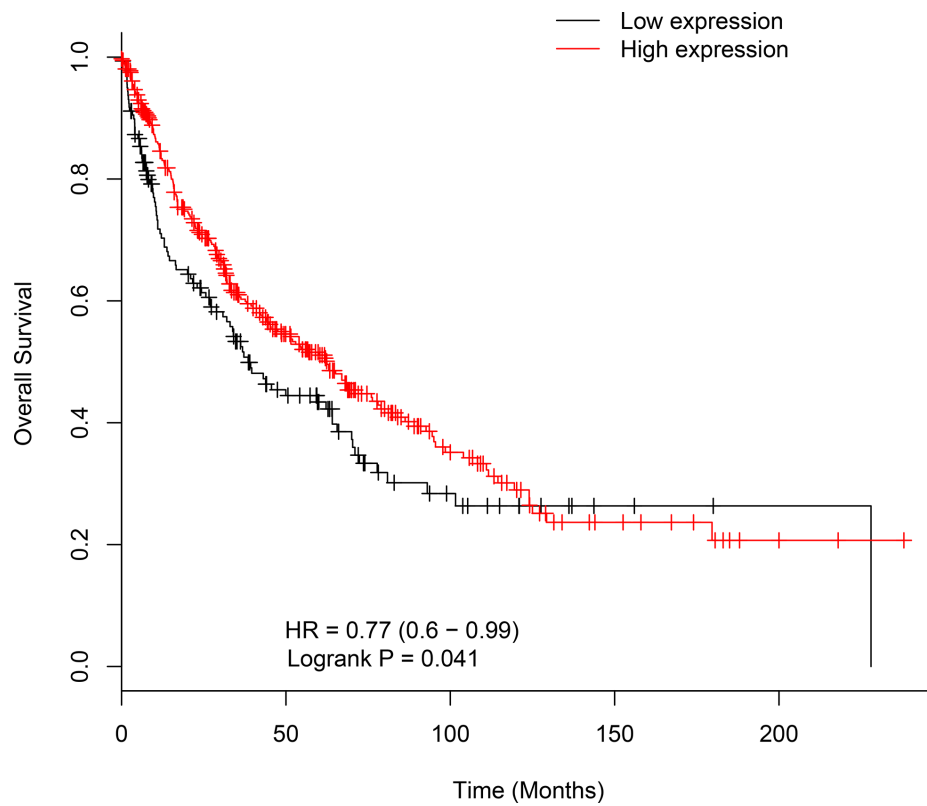
Supplementary Figure S8: High *EPB41L4A-AS2* expression was associated with worse OS than low expression in breast cancer patients with a *TP53* mutation ( $N = 111$ ).



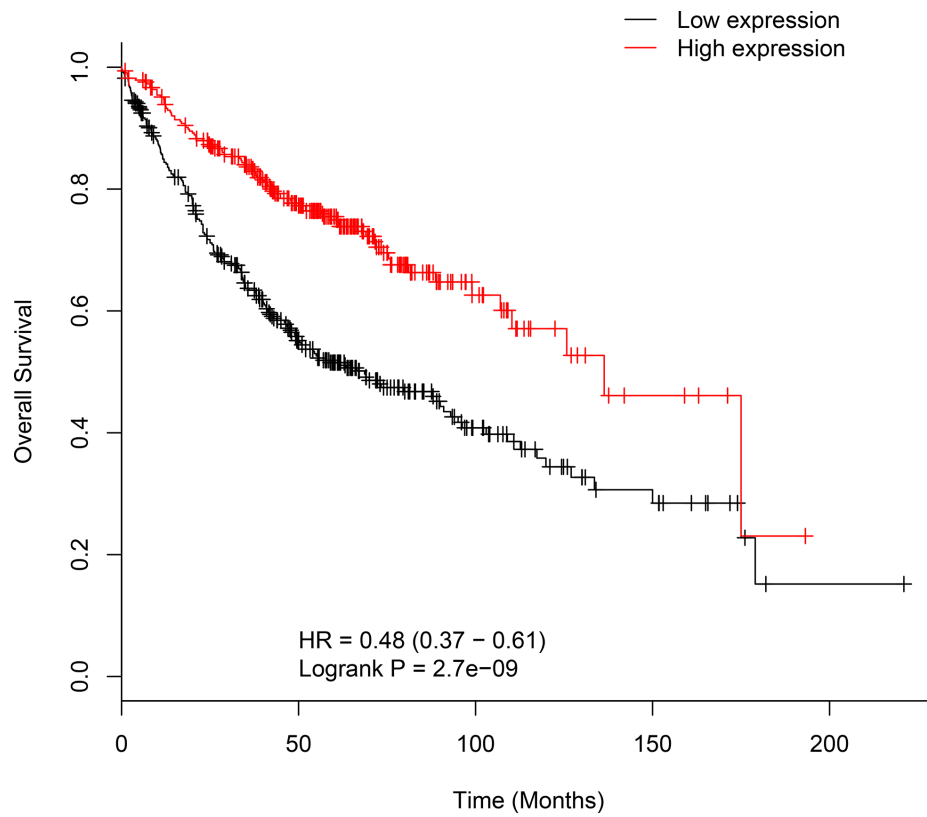
Supplementary Figure S9: Meta-analysis of *EPB41L4A-AS2* expression and prognosis of any event in breast cancer patients in cohort IV ( $N = 3,699$ ).



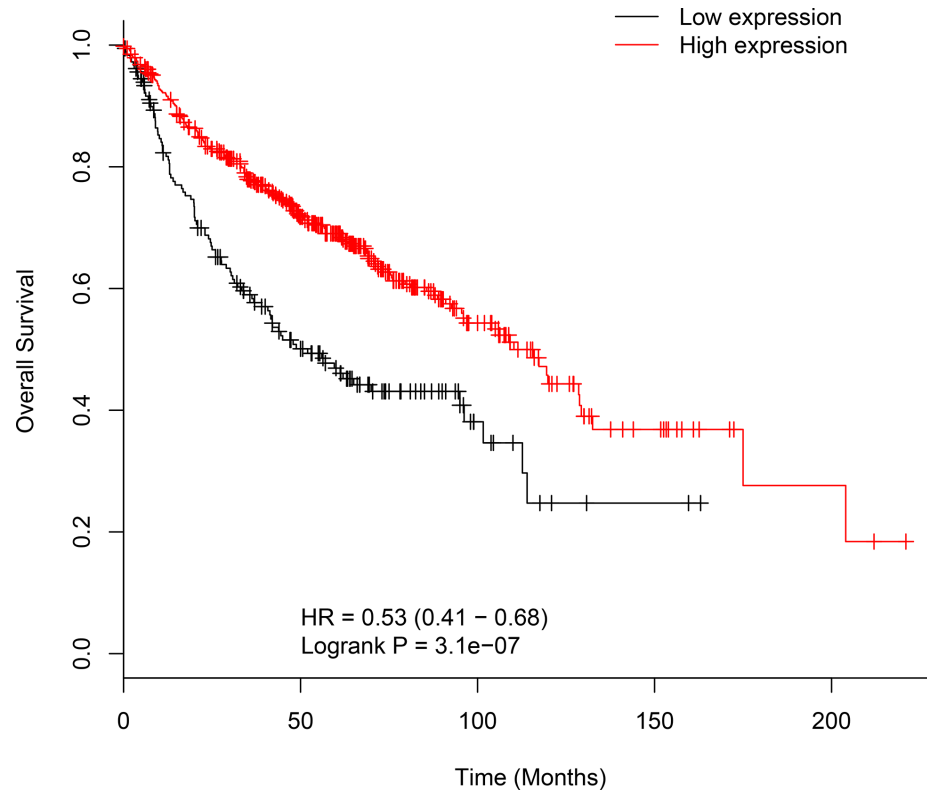
**Supplementary Figure S10: High *EPB41L4A-AS2* expression was associated with better OS than low expression in renal cancer patients in cohort II ( $N = 448$ ).**



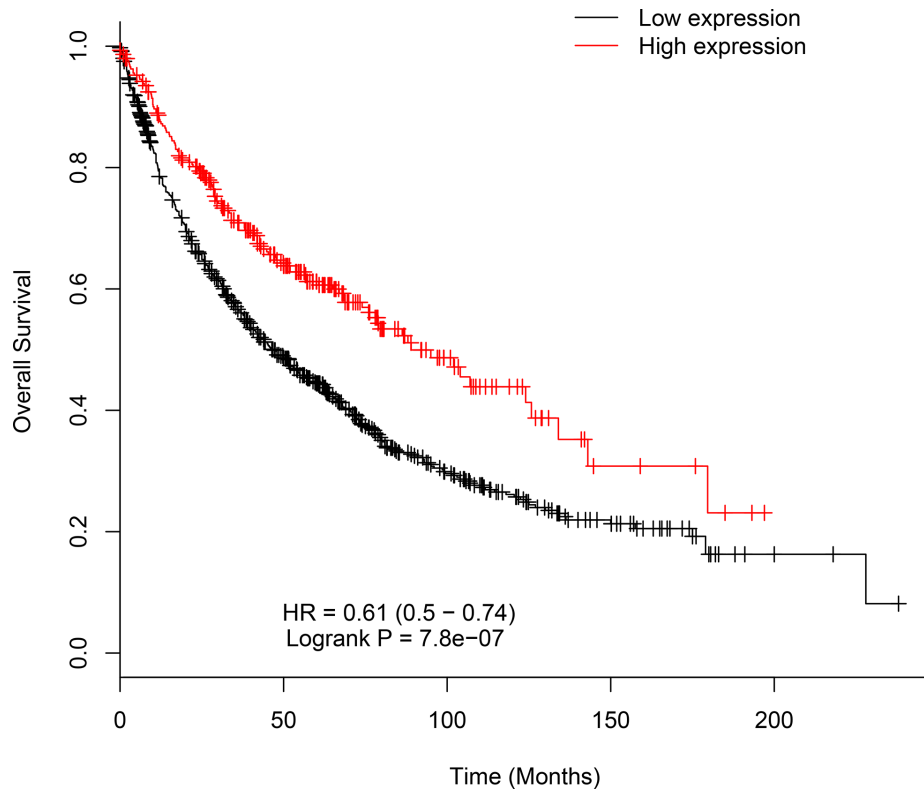
**Supplementary Figure S11: High *EPB41L4A-AS2* expression was associated with better OS than low expression in lung squamous cell cancer patients ( $N = 524$ ).**



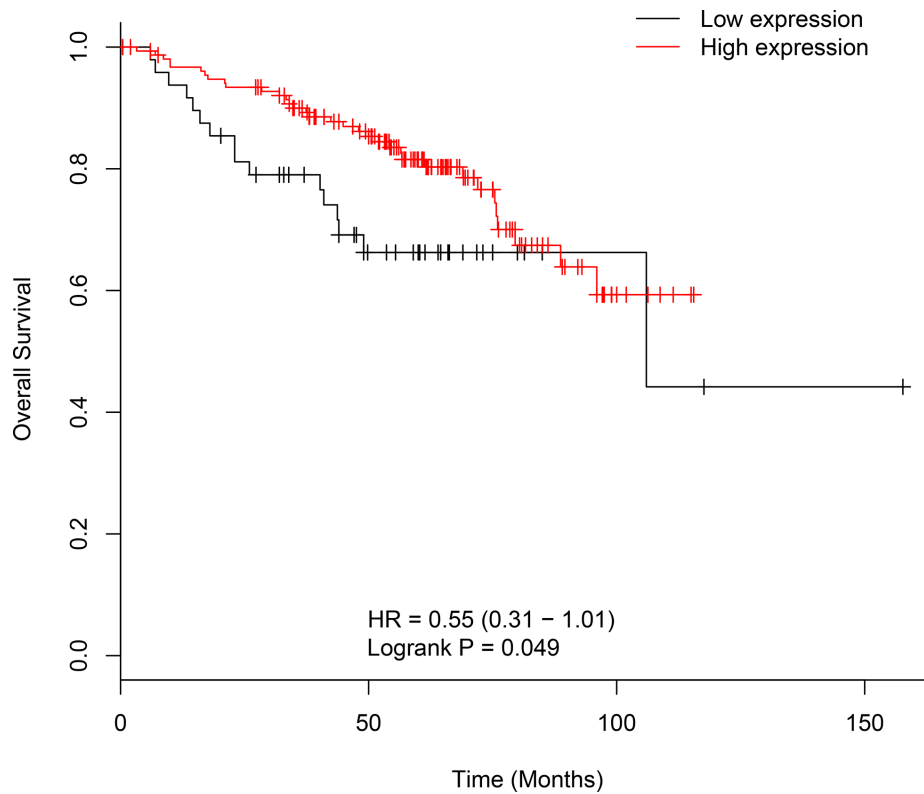
**Supplementary Figure S12: High *EPB41L4A-AS2* expression was associated with better OS than low expression in lung adenocarcinoma patients ( $N = 720$ ).**



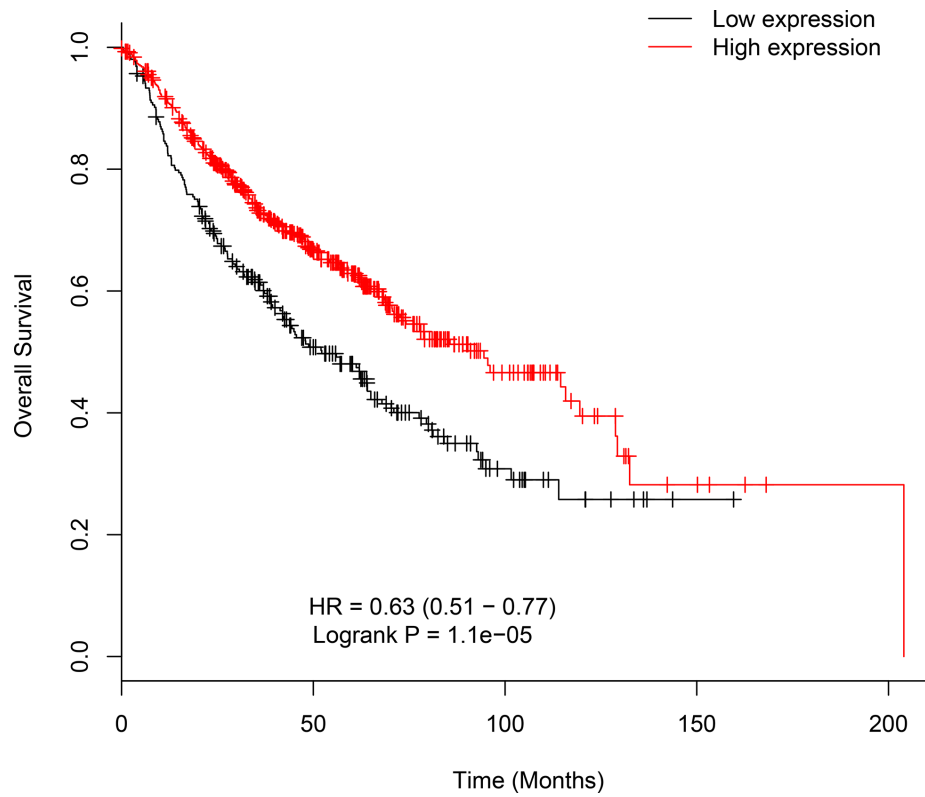
**Supplementary Figure S13: High *EPB41L4A-AS2* expression was associated with better OS than low expression in female lung cancer patients ( $N = 715$ ).**



**Supplementary Figure S14: High *EPB41L4A-AS2* expression was associated with better OS than low expression in male lung cancer patients ( $N = 1,100$ ).**



**Supplementary Figure S15: High *EPB41L4A-AS2* expression was associated with better OS than low expression in lung cancer patients who never smoked ( $N = 205$ ).**



**Supplementary Figure S16: High *EPB41L4A-AS2* expression was associated with better OS than low expression in lung cancer patients who smoked ( $N = 820$ ). \*\*\*\* $p < 0.0001$ ; \*\*\* $p < 0.001$ ; \*\* $p < 0.01$ ; \* $p < 0.05$ .**



### Supplementary Table S1: GEO datasets list in cohort III

Cohort III

GSE12276

GSE11121

GSE12093

GSE1456

GSE16391

GSE16446

GSE17907

GSE17705

GSE19615

GSE20194

GSE20271

GSE2034

GSE20685

GSE20711

GSE21653

GSE25055

GSE26971

GSE26990

GSE31448

GSE31519

GSE3494

GSE5327

GSE6532

GSE7390

GSE9195

E\_MTAB\_365

## Supplementary Table S2: GEO datasets list in cohort IV

Cohort IV

GSE1378

GSE11121

GSE12093

GSE1456

GSE16391

GSE17907

GSE19615

GSE2034

GSE20685

GSE20711

GSE21653

GSE25055

GSE26971

GSE2603

GSE33926

GSE45255

GSE4922

GSE5327

GSE6532

GSE7390

GSE7378

GSE9195

E\_TABM\_158

E\_UCON\_1