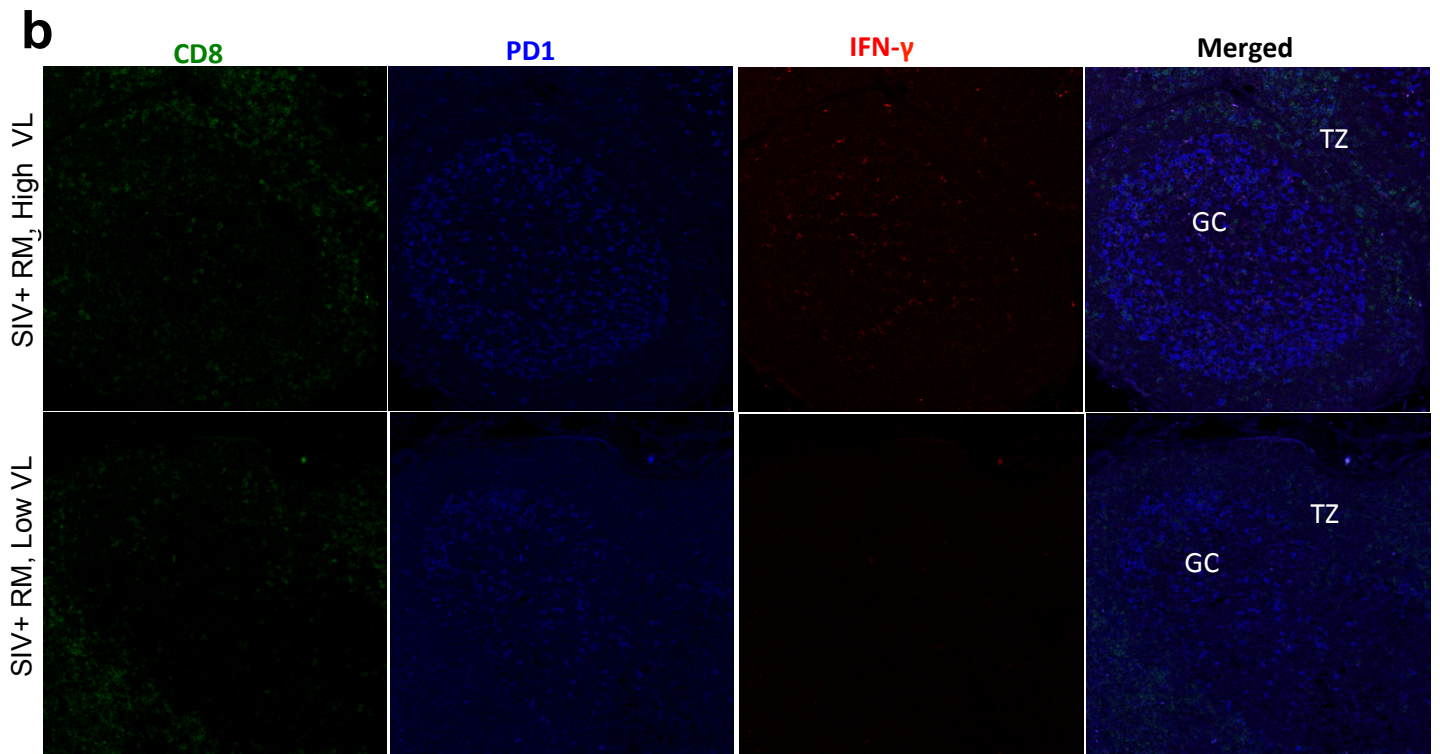
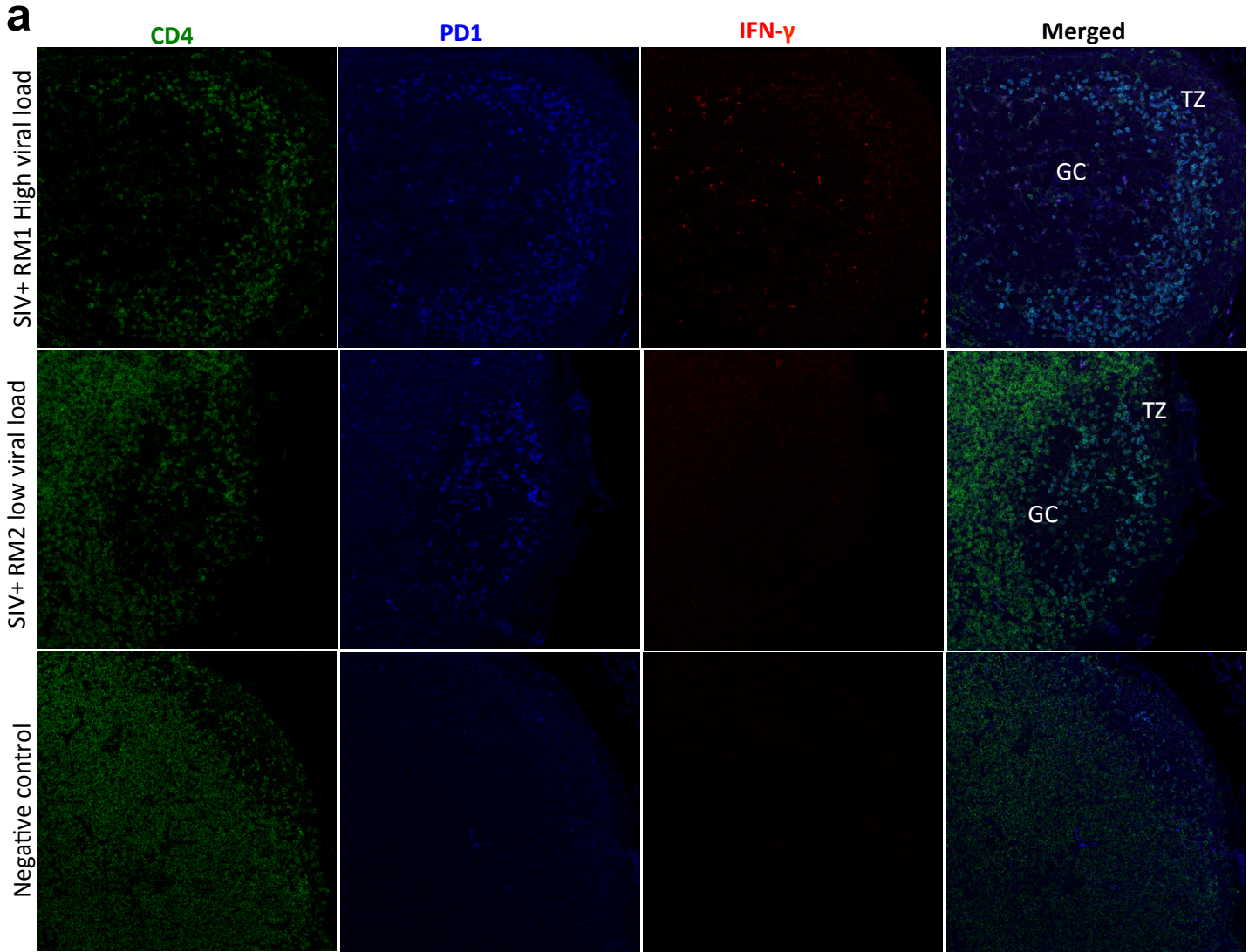


Supplemental Table 1. Cohort of SIV infected rhesus macaques used for the study

| Animal Name | Vaccination status | Set-Point Viral Load (#) | Challenge Virus | Route of Infection | Mamu A01 Status | Week of sampling |
|--------------------|--------------------------------|--------------------------|-----------------------|--------------------|-----------------|------------------|
| Controllers | | | | | | |
| RFe5 | Unvaccinated SIV-naïve animals | N/A | N/A | NA | | N/A |
| RJi13 | | N/A | N/A | NA | | N/A |
| RMg5 | | N/A | N/A | NA | | N/A |
| RMu5 | | N/A | N/A | NA | | N/A |
| ROs5 | | N/A | N/A | NA | | N/A |
| RQi5 | | N/A | N/A | NA | | N/A |
| RSg5 | | N/A | N/A | NA | | N/A |
| RAz13 | Unvaccinated SIV-infected | 46600 | SIVmac ₂₅₁ | Intra-rectal | + | 24 |
| RJi-13 | | 73100 | SIVmac ₂₅₁ | Intra-rectal | + | 24 |
| RFe14 | | 329000 | SIVmac ₂₅₁ | Intra-rectal | - | 24 |
| RSg14 | | 155000 | SIVmac ₂₅₁ | Intra-rectal | - | 24 |
| RQi14 | | 54900 | SIVmac ₂₅₁ | Intra-rectal | + | 24 |
| RUk13 | | 146000 | SIVmac ₂₅₁ | Intra-rectal | + | 24 |
| RCa12 | | 201000 | SIVmac ₂₅₁ | Intra-rectal | - | 24 |
| RKw13 | | 4050 | SIVmac ₂₅₁ | Intra-rectal | - | 24 |
| RTa14 | | 49500 | SIVmac ₂₅₁ | Intra-rectal | - | 24 |
| RJh14 | | 34700 | SIVmac ₂₅₁ | Intra-rectal | + | 24 |
| RQd13 | | 27300 | SIVmac ₂₅₁ | Intra-rectal | - | 24 |
| RLe-14 | | 523000 | SIVmac ₂₅₁ | Intra-rectal | + | 24 |
| RGq14 | | 2830 | SIVmac ₂₅₁ | Intra-rectal | - | 24 |
| RRg14 | | 2550 | SIVmac ₂₅₁ | Intra-rectal | + | 24 |
| RHg14 | | 36600 | SIVmac ₂₅₁ | Intra-rectal | - | 24 |
| RJb12 | | 279 | SIVmac ₂₅₁ | Intra-rectal | + | 32 |
| RHb12 | | 40 | SIVmac ₂₅₁ | Intra-rectal | + | 32 |
| RFF12 | | 4630 | SIVmac ₂₅₁ | Intra-rectal | - | 32 |
| RTt12 | | 5160 | SIVmac ₂₅₁ | Intra-rectal | - | 32 |
| RKo12 | | 609 | SIVmac ₂₅₁ | Intra-rectal | - | 32 |
| RJp12 | | 40 | SIVmac ₂₅₁ | Intra-rectal | + | 32 |
| RUf12 | | 544000 | SIVmac ₂₅₁ | Intra-rectal | - | 32 |
| RSa12 | | 17500 | SIVmac ₂₅₁ | Intra-rectal | - | 32 |
| RUp12 | | 3590 | SIVmac ₂₅₁ | Intra-rectal | + | 32 |
| REq12 | | 40 | SIVmac ₂₅₁ | Intra-rectal | - | 32 |
| RFI12 | | 40 | SIVmac ₂₅₁ | Intra-rectal | - | 32 |
| RA s12 | | 40 | SIVmac ₂₅₁ | Intra-rectal | - | 32 |
| RRc12 | | 68700 | SIVmac ₂₅₁ | Intra-rectal | - | 32 |
| RHu13 | | 13800 | SIVmac ₂₅₁ | Intra-rectal | + | 32 |
| RBr12 | | 595 | SIVmac ₂₅₁ | Intra-rectal | - | 32 |



Supplemental Figure 1: Chronic SIV infection results in accumulation of IFN- γ ⁺ CD4 T cells but not CD8 T cells within the follicles. (a) Representative immunofluorescence images characterizing CD4⁺ IFN- γ ⁺ cells in the GC/follicles of LNs from SIV-naïve and SIV⁺ RMs with low (<100 copies) and high (>10,000 copies) viral load. **(b)** Representative immunofluorescence images characterizing CD8⁺ IFN- γ ⁺ cells in the GC/follicles of LNs from SIV⁺ RMs with low (<100 copies) and high (>10,000 copies) viral load.