

Supplementary Figure 3

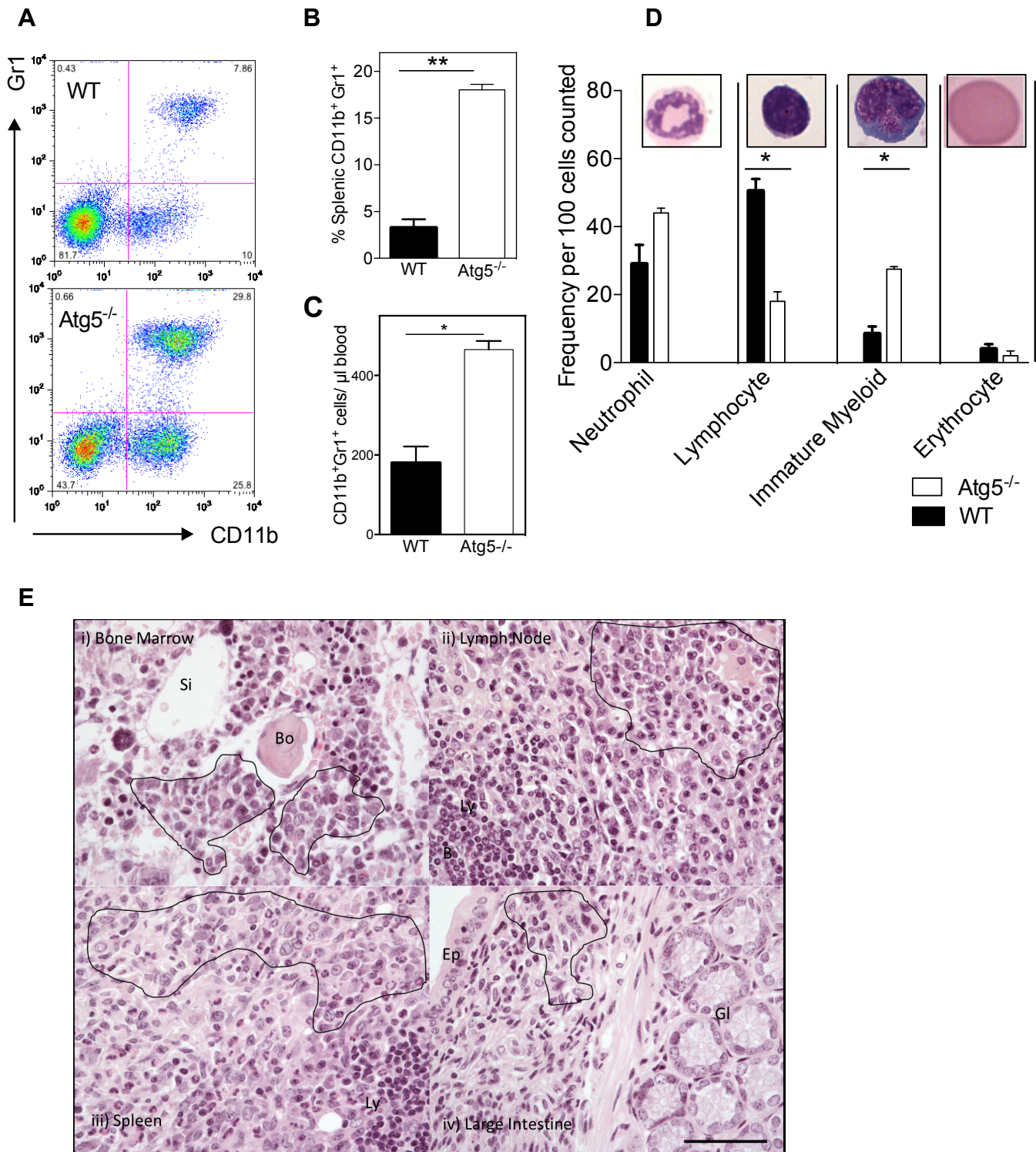


Figure S3 Autophagy deficient myeloid cells accumulate *in vivo* (A) Representative flow cytometry plots of CD11b and Gr1 expression in peripheral blood of 6 week old *VavAtg5^{-/-}* mice or wild type (WT) littermate controls. (B) Frequency of CD11b⁺Gr1⁺ cells among total splenocytes from *VavAtg5^{-/-}* mice and WT mice (n=3, mean s.e.m.) and (C) absolute counts in blood. (D) Frequency per 100 cells of indicated cell types in cytopins of 6 week old *VavAtg5^{-/-}* mouse bone marrow or that of WT littermate controls along with representative images of each cell type (counted in duplicate, mean s.d., representative of two time points). (E) Paraffin embedded tissue sections of *VavAtg5^{-/-}* mice showing dysplastic infiltrates in BM (Bo-bone, Si-sinus), lymph nodes (Ly-lymphocyte), spleen and large intestine (GI-gland, Ep-epithelium) (scale bar 50 μm all panels).