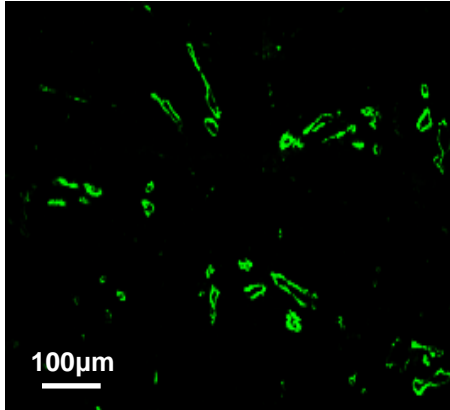


**Supplementary Figure 1.** Microphotographs of lymphoid aggregates in infected salivary glands (day 5, day 8, day 15 and day 23 p.c.) from *wt* mice stained for CD3 (red), CD19 (blue) and CD21-CD35 (green). Original magnifications 25X. **b**, Microphotograph of lymphoid stromal cell expansion within lymphoid aggregates in infected salivary glands (day 8 and 15 p.c.) from *wt* mice, stained for CD3 (red), CD19 (blue) and gp38 (green). Original magnifications 25X.

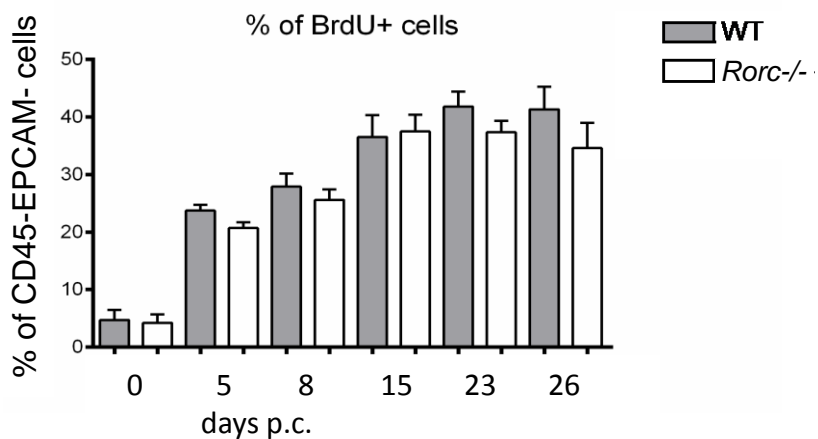
a. LYVE-1



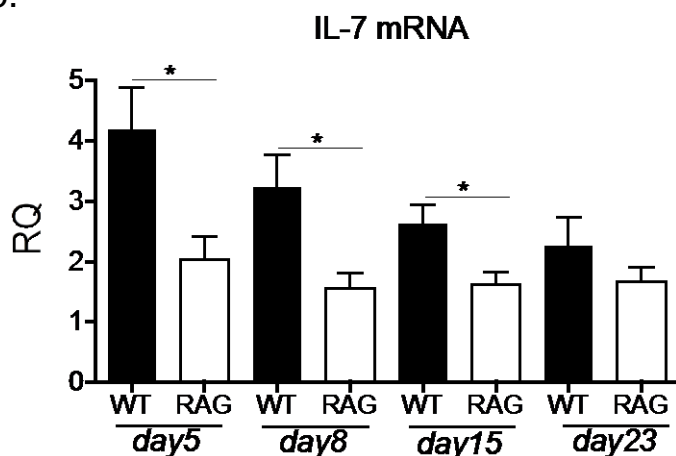
day 23 p.c.

**Supplementary Figure 2.** Representative microphotograph of lymphatic vessels in infected salivary glands (day 23 p.c.) from *wt* mice stained for LYVE-1 (green). Original magnifications 25X.

a.

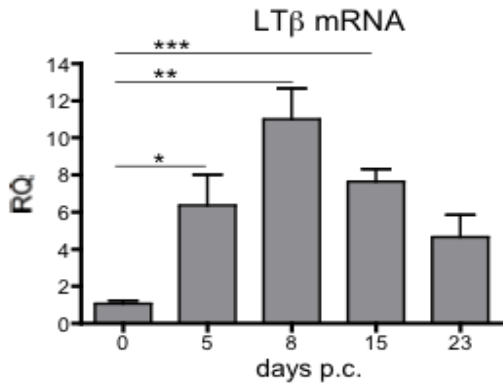


b.



**Supplementary Figure 3 a**, Graphs showing summary of analysis for percentage of proliferating (BrdU+) gp38+CD31+ LEC within the CD45-EPCAM- stromal fraction in *wt* mice (grey bars) compared to *Rorc*<sup>-/-</sup> mice (white bars). Data represented as mean+s.e.m of two independent experiments. **b**, Quantitative RT-PCR analysis of mRNA transcript for IL-7 in *wtboyJ* and *ragboyJ* mice at day 5, 8, 15 and 23 p.c. Transcripts were normalized to housekeeping gene *pdgfrβ*. The relative expression values (RQ) were calibrated with day 0 p.c. salivary gland values; \*,  $p < 0.05$ . Data are representative mean+s.e.m of three to four experiments with six to four glands analysed per group.

a.



**Supplementary Figure 4**, Quantitative RT-PCR analysis of mRNA transcript for Ltβ in *wt* mice at day 0, day 5, 8, 15 and 23 p.c. Transcripts were normalized to housekeeping gene β-actin. The relative expression values (RQ) were calibrated with day 0 p.c. salivary gland values; \*,  $p < 0.05$ , \*\*,  $p < 0.01$ , \*\*\*,  $p < 0.001$ . Data are representative mean+s.e.m of three to four experiments with six to four glands analysed per group.