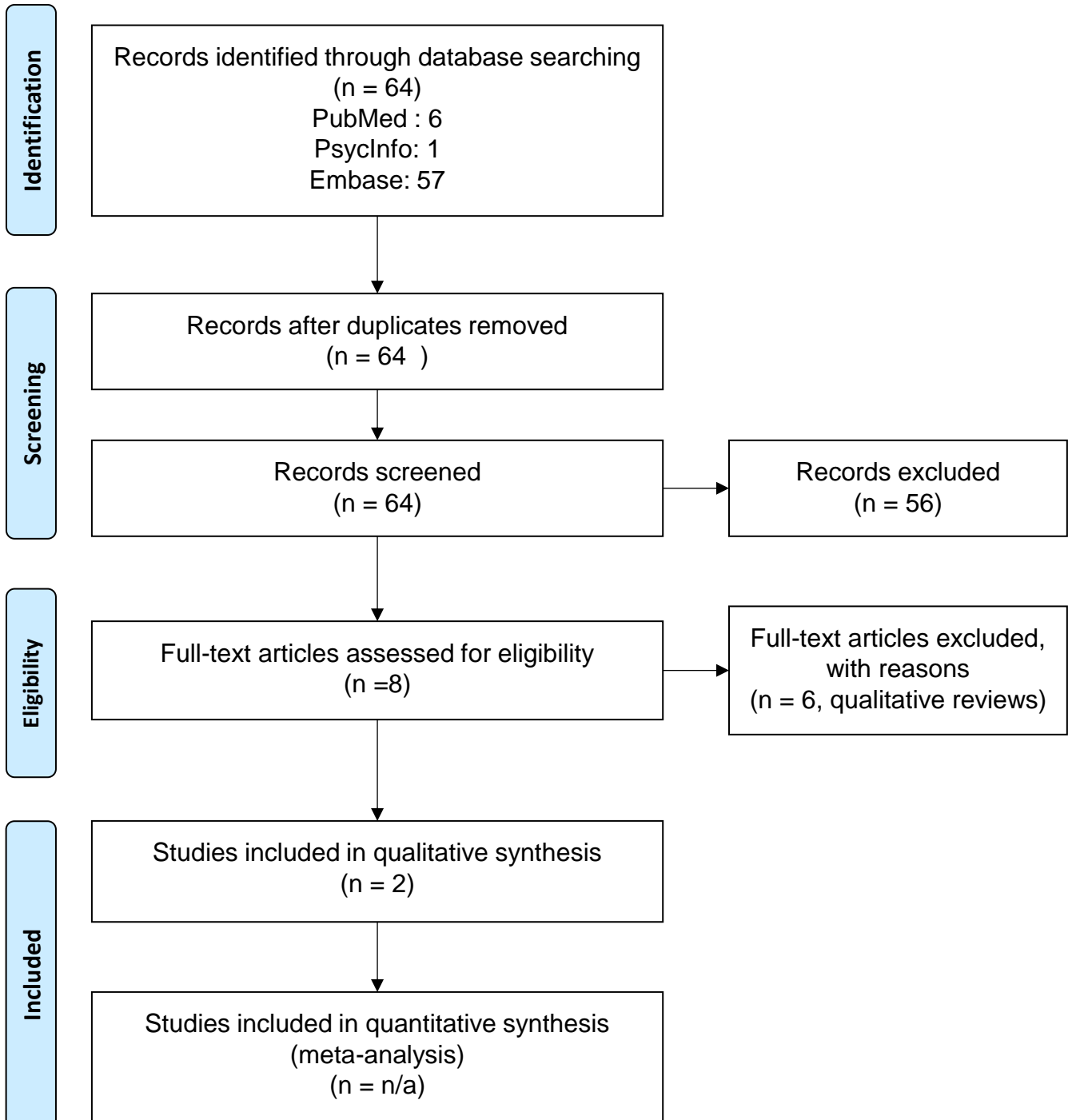


Canadian Network for Mood and Anxiety Treatments (CANMAT) 2016 Clinical Guidelines for the Management of Adults with Major Depressive Disorder: Introduction and Methods

Figure S1. PRISMA figure for Question: Switching Antidepressants



**Canadian Network for Mood and Anxiety Treatments (CANMAT) 2016 Clinical
Guidelines for the Management of Adults with Major Depressive Disorder:
Introduction and Methods**

Table S1. Example of search strategy for Question: Switching Antidepressants.

PubMed

("depressive disorder"[mh] OR "depression"[mh] OR depression[TIAB] OR "depressive disorder"[TIAB])
AND ("Antidepressive Agents"[mh] OR "Antidepressive Agents"[pa] OR antidepressant*[TIAB] OR "antidepressive agent"[TIAB] OR "antidepressive agents"[TIAB] OR 2-hydroxydesipramine[TIAB] OR 5-Hydroxytryptophan[TIAB] OR adinazolam[TIAB] OR alaproclate[TIAB] OR amineptin[TIAB] OR Amitriptyline[TIAB] OR Amoxapine[TIAB] OR aniracetam[TIAB] OR Benactyzine[TIAB] OR bifemelane[TIAB] OR Bupropion[TIAB] OR Citalopram[TIAB] OR Clomipramine[TIAB] OR Clorgyline[TIAB] OR clovoxamine[TIAB] OR cotriptyline[TIAB] OR cyclobenzaprine[TIAB] OR Deanol[TIAB] OR Desipramine[TIAB] OR desmethyldoxepin[TIAB] OR dibenzepin[TIAB] OR Dothiepin[TIAB] OR Doxepin[TIAB] OR duloxetine[TIAB] OR femoxetine[TIAB] OR flesinoxan[TIAB] OR Fluoxetine[TIAB] OR Fluvoxamine[TIAB] OR gamma-endorphin[TIAB] OR gepirone[TIAB] OR hydroxymaprotilin[TIAB] OR hypericin OR Imipramine OR indalpine[TIAB] OR indeloxazine[TIAB] OR Iprindole[TIAB] OR Iproniazid[TIAB] OR Isocarboxazid[TIAB] OR "L 701324"[TIAB] OR "Lithium Carbonate"[TIAB] OR "Lithium Compounds"[TIAB] OR Lofepamine[TIAB] OR Maprotiline[TIAB] OR melitracene[TIAB] OR metapramine[TIAB] OR Mianserin[TIAB] OR milnacipran[TIAB] OR milnacipran[TIAB] OR "MK 771"[TIAB] OR Moclobemide[TIAB] OR nefazodone[TIAB] OR Nialamide[TIAB] OR Nortriptyline[TIAB] OR norzimelidine[TIAB] OR noxiptilin[TIAB] OR O-desmethylvenlafaxine[TIAB] OR Opipramol[TIAB] OR Paroxetine[TIAB] OR Phenelzine[TIAB] OR pirlindole[TIAB] OR Pizotiline[TIAB] OR progabide[TIAB] OR Protriptyline[TIAB] OR Quipazine[TIAB] OR reboxetine[TIAB] OR Ritanserin[TIAB] OR Rolipram[TIAB] OR Sertraline[TIAB] OR sibutramine[TIAB] OR sidnocarb[TIAB] OR sulforidazine[TIAB] OR Sulpiride[TIAB] OR talipexole[TIAB] OR tianeptine[TIAB] OR tofisopam[TIAB] OR toloxatone[TIAB] OR Tranlycypromine[TIAB] OR Trazodone[TIAB] OR Trimipramine[TIAB] OR Tryptophan[TIAB] OR venlafaxine[TIAB] OR Viloxazine[TIAB])
AND (switch*[TIAB] OR "changing medication"[TIAB] OR "medication changed"[TIAB] OR "changed medication"[TIAB] OR "medication altered"[TIAB] OR "altered medication"[TIAB] OR "changing antidepressant"[TIAB] OR "antidepressant changed"[TIAB] OR "changed antidepressant"[TIAB] OR "antidepressant altered"[TIAB] OR "altered antidepressant"[TIAB] OR "changing antidepressive agent"[TIAB] OR "antidepressive agent changed"[TIAB] OR "changed antidepressive agent"[TIAB]) OR "antidepressive agent altered"[TIAB] OR "altered antidepressive

agent"[TIAB] OR "changing monotherapy"[TIAB] OR "monotherapy changed"[TIAB] OR "changed monotherapy"[TIAB] OR "monotherapy altered"[TIAB] OR "second monotherapy"[TIAB] OR "altered monotherapy"[TIAB] OR "changing treatment"[TIAB] OR "treatment changed"[TIAB] OR "changed treatment"[TIAB] OR "treatment altered"[TIAB] OR "altered treatment"[TIAB])

AND 2009:2015[dp]

Rajout de dimension méta-analyse et revues systématiques :

Filters: Meta-Analysis; Systematic Reviews

PsycInfo

(Keywords:(depression OR "depressive disorder") OR Abstract:(depression OR "depressive disorder") OR Index Terms:"major depression")

AND ((Keywords:(antidepressant* OR "antidepressive agent" OR "antidepressive agents" OR 2-hydroxydesipramine OR 5-Hydroxytryptophan OR adinazolam OR alaproclate OR amineptin OR Amitriptyline OR Amoxapine OR aniracetam OR Benactyzine OR bifemelane OR Bupropion OR Citalopram OR Clomipramine OR Clorgyline OR clovoxamine OR cotriptyline OR cyclobenzaprine OR Deanol OR Desipramine OR desmethyldoxepin OR dibenzepin OR Dothiepin OR Doxepin OR duloxetine OR femoxetine OR flesinoxan OR Fluoxetine OR Fluvoxamine OR gamma-endorphin OR gepirone OR hydroxymaprotilin OR hypericin OR Imipramine OR indalpine OR indeloxazine OR Iprindole OR Iproniazid OR Isocarboxazid OR "L 701324" OR "Lithium Carbonate" OR "Lithium Compounds"OR Lofepramine OR Maprotiline OR melitracene OR metapramine OR Mianserin OR milnacipran OR milnacipran OR "MK 771" OR Moclobemide OR nefazodone OR Nialamide OR Nortriptyline OR norzimelidine OR noxiptilin OR O-desmethylvenlafaxine OR Opipramol OR Paroxetine OR Phenelzine OR pirlindole OR Pizotyline OR progabide OR Protriptyline OR Quipazine OR reboxetine OR Ritanserin OR Rolipram OR Sertraline OR sibutramine OR sidnocarb OR sulforidazine OR Sulpiride OR talipexole OR tianeptine OR tofisopam OR toloxatone OR Tranylcypromine OR Trazodone OR Trimipramine OR Tryptophan OR venlafaxine OR Viloxazine)

OR Abstract:(antidepressant* OR "antidepressive agent" OR "antidepressive agents" OR 2-hydroxydesipramine OR 5-Hydroxytryptophan OR adinazolam OR alaproclate OR amineptin OR Amitriptyline OR Amoxapine OR aniracetam OR Benactyzine OR bifemelane OR Bupropion OR Citalopram OR Clomipramine OR Clorgyline OR clovoxamine OR cotriptyline OR cyclobenzaprine OR Deanol OR Desipramine OR desmethyldoxepin OR dibenzepin OR Dothiepin OR Doxepin OR duloxetine OR femoxetine OR flesinoxan OR Fluoxetine OR Fluvoxamine OR gamma-endorphin OR gepirone OR hydroxymaprotilin OR hypericin OR Imipramine OR indalpine OR indeloxazine OR Iprindole OR Iproniazid OR Isocarboxazid OR "L 701324" OR "Lithium Carbonate" OR "Lithium Compounds"OR Lofepramine OR Maprotiline OR melitracene OR metapramine OR Mianserin OR milnacipran OR milnacipran OR "MK 771" OR Moclobemide OR nefazodone OR Nialamide OR Nortriptyline OR norzimelidine OR noxiptilin OR O-desmethylvenlafaxine OR Opipramol OR Paroxetine OR Phenelzine OR pirlindole OR Pizotyline OR progabide OR Protriptyline OR Quipazine OR reboxetine OR Ritanserin OR Rolipram OR Sertraline OR sibutramine OR sidnocarb OR sulforidazine OR Sulpiride OR talipexole OR tianeptine OR tofisopam OR

toloxatone OR Tranylcypramine OR Trazodone OR Trimipramine OR Tryptophan OR
 venlafaxine OR Viloxazine)
 OR (IndexTermsFilt:("Chlorimipramine") OR IndexTermsFilt:("Citalopram") OR
 IndexTermsFilt:("Fluoxetine") OR IndexTermsFilt:("Fluvoxamine") OR
 IndexTermsFilt:("Paroxetine") OR IndexTermsFilt:("Serotonin Reuptake Inhibitors") OR
 IndexTermsFilt:("Zimeldine")) OR (IndexTermsFilt:("Antidepressant Drugs") OR
 IndexTermsFilt:("Bupropion") OR IndexTermsFilt:("Chlorimipramine") OR
 IndexTermsFilt:("Citalopram") OR IndexTermsFilt:("Fluoxetine") OR
 IndexTermsFilt:("Fluvoxamine") OR IndexTermsFilt:("Iproniazid") OR
 IndexTermsFilt:("Isocarboxazid") OR IndexTermsFilt:("Lithium Carbonate") OR
 IndexTermsFilt:("Methylphenidate") OR IndexTermsFilt:("Mianserin") OR
 IndexTermsFilt:("Moclobemide") OR IndexTermsFilt:("Molindone") OR
 IndexTermsFilt:("Nefazodone") OR IndexTermsFilt:("Nialamide") OR
 IndexTermsFilt:("Nomifensine") OR IndexTermsFilt:("Paroxetine") OR
 IndexTermsFilt:("Phenelzine") OR IndexTermsFilt:("Pheniprazine") OR
 IndexTermsFilt:("Serotonin Norepinephrine Reuptake Inhibitors") OR
 IndexTermsFilt:("Serotonin Reuptake Inhibitors") OR IndexTermsFilt:("Sertraline") OR
 IndexTermsFilt:("Sulpiride") OR IndexTermsFilt:("Tranylcypramine") OR
 IndexTermsFilt:("Trazodone") OR IndexTermsFilt:("Tricyclic Antidepressant Drugs")
 OR IndexTermsFilt:("Venlafaxine") OR IndexTermsFilt:("Zimeldine"))))
 AND (Keywords:(switch* or "second monotherapy" or ((changed or changing or altered)
 NEAR/2 (medication or monotherapy or treatment or antidepressant or "antidepressive
 agent"))) OR Abstract:(switch* or "second monotherapy" or ((changed or changing or
 altered) NEAR/2 (medication or monotherapy or treatment or antidepressant or
 "antidepressive agent"))))
 Rajout de filtres 2009 à 2015 et population group : human
Rajout de filtre Methodology : systematic review et meta analysis

Embase

((depression OR "depressive disorder").ti,ab. OR "depression"/ OR "treatment resistant
 depression"/)
 AND ((antidepressant* OR "antidepressive agent" OR "antidepressive agents" OR 2-
 hydroxydesipramine OR 5-Hydroxytryptophan OR adinazolam OR alaproclate OR
 amineptin OR Amitriptyline OR Amoxapine OR aniracetam OR Benactyzine OR
 bifemelane OR Bupropion OR Citalopram OR Clomipramine OR Clorgyline OR
 clovoxamine OR cotriptyline OR cyclobenzaprine OR Deanol OR Desipramine OR
 desmethyldoxepin OR dibenzepin OR Dothiepin OR Doxepin OR duloxetine OR
 femoxetine OR flesinoxan OR Fluoxetine OR Fluvoxamine OR gamma-endorphin OR
 gepirone OR hydroxymaprotilin OR hypericin OR Imipramine OR indalpine OR
 indeloxazine OR Iprindole OR Iproniazid OR Isocarboxazid OR "L 701324" OR
 "Lithium Carbonate" OR "Lithium Compounds" OR Lofepramine OR Maprotiline OR
 melitracene OR metapramine OR Mianserin OR milnacipran OR milnacipran OR "MK
 771" OR Moclobemide OR nefazodone OR Nialamide OR Nortriptyline OR
 norzimelidine OR noxiptilin OR O-desmethylvenlafaxine OR Opipramol OR Paroxetine
 OR Phenelzine OR pirlindole OR Pizotyline OR progabide OR Protriptyline OR
 Quipazine OR reboxetine OR Ritanserin OR Rolipram OR Sertraline OR sibutramine OR

sidnocarb OR sulforidazine OR Sulpiride OR talipexole OR tianeptine OR tofisopam OR toloxatone OR Tranylcypramine OR Trazodone OR Trimipramine OR Tryptophan OR venlafaxine OR Viloxazine).ti,ab. OR exp antidepressant agent/)

AND (switch* or "second monotherapy" or ((changed or changing or altered) adj2 (medication or monotherapy or treatment or antidepressant or "antidepressive agent"))).ti,ab.

Rajout de limit (# de la requête) to yr= 2009-2015

Rajout de limit (# de la requête) to (meta analysis or "systematic review")