

Title: Carotid plaque and bone density and microarchitecture in psoriatic arthritis: the correlation with soluble ST2

Authors:

Jiayun Shen¹, PhD, Qing Shang¹, PhD, Chun-Kwok Wong², PhD, Edmund K. Li¹, MD, Emily W Kun³, FRCP, Isaac T. Cheng¹, BSc, Martin Li¹, PhD, Tena K. Li¹, BN, Tracy Y. Zhu⁴, PhD, Cheuk-Man Yu¹, MD, Ling Qin⁴, PhD, Lai-Shan Tam^{*1}, MD.

Affiliated institution:

¹Department of Medicine & Therapeutics, The Prince of Wales Hospital, The Chinese University of Hong Kong, Hong Kong; ²Department of Chemical Pathology, The Prince of Wales Hospital, The Chinese University of Hong Kong, Hong Kong, ³Department of Medicine and Geriatrics, Taipo Hospital, Hong Kong, ⁴Bone Quality and Health Center of the Department of Orthopedics & Traumatology, The Prince of Wales Hospital, The Chinese University of Hong Kong, Hong Kong.

Supplementary Table 1. Anthropometric and clinical characteristics of patients without cardiovascular diseases

	All (n=71)	Carotid plaque		P value
		No (n=45)	Yes (n=26)	
Male gender, n(%)	39(54.9%)	22(48.9%)	17(65.4%)	0.178
Age (years)	51.7±9.5	49.7±9.8	55.2±7.9	0.018
PsA characteristics				
PsA disease duration (years)	13.9±7.0	12.1±6.8	17.0±6.4	0.004
Tender joint count (0-68)	0(0-2)	0(0-2)	0(0-1)	0.460
Swollen joint count (0-66)	0(0-1)	0(0-0)	0(0-2)	0.149
Damaged joint count (0-68)	2(0-6)	2(0-4)	2(0-9)	0.176
VAS Pain (0-100)	30(10-50)	30(20-50)	30(10-60)	0.947
Patients' global (0-100)	50(20-60)	40(20-60)	50(30-60)	0.368
Physicians' global (0-100)	20(7-40)	20(6-35)	23(10-40)	0.461
PASI (0-72)	2.2 (0.7-6.5)	2.7 (0.9-6.2)	1.8 (0.5-10.8)	0.862
HAQ (0-3)	0.13(0-0.50)	0.13(0-0.38)	0.31(0-0.75)	0.225

MDA, n(%)	13(18.3%)	10(22.2%)	3(11.5%)	0.348
ESR (mm/1 st hr)	15(7-28)	15(7-29)	15(6-28)	0.831
CRP (mg/dl)	0.3(0.1-0.7)	0.3(0.1-0.6)	0.4(0.1-0.8)	0.391
CV and osteoporosis risk factors				
Body weight (kg)	68.2±14.0	68.6±15.5	67.4±11.0	0.725
BMI (kg/m ²)	25.5±4.3	25.8±4.6	24.9±3.6	0.385
Systolic BP (mmHg)	128±15	127±15	128±16	0.779
Diastolic BP (mmHg)	82±10	82±10	82±11	0.917
Hypertension, n(%)	38(53.5%)	24(53.3%)	14(53.8%)	0.967
Diabetes, n(%)	11(15.5%)	6(13.3%)	5(19.2%)	0.516
Hyperlipidemia, n(%)	17(23.9%)	8(17.8%)	9(34.6%)	0.109
Metabolic syndrome, n(%)	20(28.2%)	14(31.1%)	6(23.1%)	0.434
Framingham 10-year CVD risk > 10%, n(%)	31(43.7%)	15(33.3%)	16(61.5%)	0.021
Total cholesterol (mmol/L)	5.0±0.9	5.0±0.8	5.1±0.9	0.601
HDL cholesterol (mmol/L)	1.4±0.4	1.4±0.4	1.4±0.4	0.863
Triglycerides (mmol/L)	1.5±0.9	1.5±1.1	1.4±0.6	0.368
Fasting glucose (mmol/L)	5.6±1.8	5.7±1.9	5.4±1.6	0.463

Post-menopause women, n(%)	18(56.3%)	13(56.5%)	5(55.6%)	0.999
Current smoker, n(%)	8(11.3%)	5(11.1%)	3(11.5%)	0.999
Current drinker, n(%)	1(1.4%)	1(2.2%)	0(0%)	0.999
Parent history of fracture, n(%)	7(9.9%)	5(11.1%)	2(7.7%)	0.999
History of fracture, n(%)	6(8.5%)	3(6.7%)	3(11.5%)	0.662
Current medications, n (%)				
Anti-hypertensive	36(50.7%)	23(51.1%)	13(50.0%)	0.928
Statins	10(14.1%)	4(8.9%)	6(23.1%)	0.155
NSAIDs	32(45.1%)	21(46.7%)	11(42.3%)	0.722
Steroids	2(2.8%)	1(2.2%)	1(3.8%)	0.999
DMARDs	40(56.3%)	27(60.0%)	13(50.0%)	0.413
Biologics	11(15.5%)	7(15.6%)	4(15.4%)	0.999
Biomarkers				
Detectable IL-33, n (%)	11(15.5%)	8(17.8%)	3(11.5%)	0.735
sST2 (ng/ml)	8.7±3.8	7.4±3.0	10.9±3.9	<0.001

VAS: visual analogue scale, PASI: Psoriasis Area and Severity Index, HAQ:

Health Assessment Questionnaire, MDA: minimal disease activity, ESR:

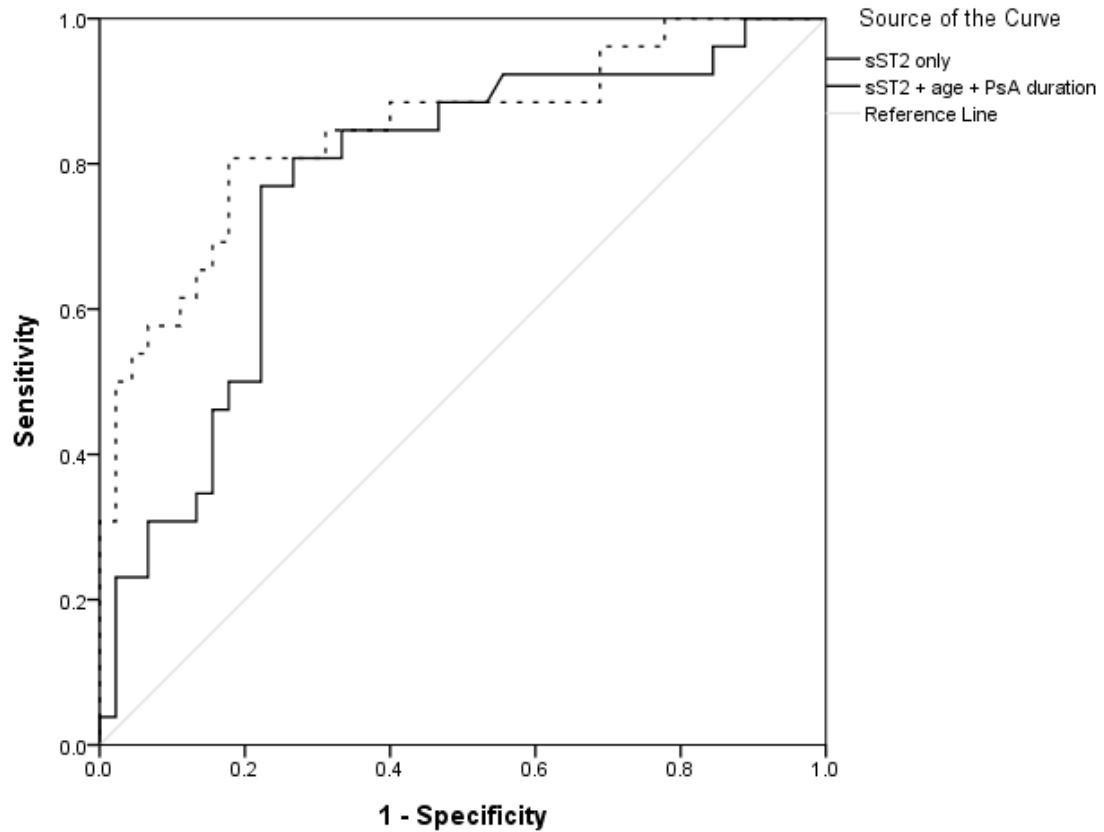
erythrocyte sedimentation rate, CRP: c-reactive protein, CV: cardiovascular, BMI: body mass index, BP: blood pressure, HDL: high-density lipoprotein, NSAIDs: nonsteroidal anti-inflammatory drugs, DMARDs: disease-modifying antirheumatic drugs.

Values are the number (percentage) or median (interquartile range) or mean \pm SD.

Supplementary Table 2. Univariate and multivariate analysis for factors associated with presence of carotid plaque in patients without cardiovascular diseases (n=71)

	Univariate			Multivariate		
	OR	95% CI	<i>P</i> value	OR	95% CI	<i>P</i> value
Age (years)	1.072	1.009-1.138	0.024	1.091	1.000-1.191	0.049
Disease duration (years)	1.112	1.030-1.201	0.007	1.100	1.004-1.205	0.041
Framingham 10-year CVD risk > 10%, n(%)	3.200	1.172-8.735	0.023	0.991	0.239-4.112	0.991
sST2 (ng/ml)	1.334	1.129-1.576	0.001	1.431	1.162-1.763	0.001

Supplementary Figure 1. ROC curve for discriminating patients with or without carotid plaque in patients without cardiovascular diseases (n=71)



The 2 independent risk factors in the multivariate analysis (sST2 and age) were used to generate a combined predictive score for plaque using logistic regression. Line: Plasma sST2 level only; AUROC: 0.772 (95% CI: [0.657, 0.887]; $P < 0.001$);

Dots: Predictive value combined by plasma sST2 level and age; AUROC: 0.845 (95% CI: [0.746, 0.945]; $P < 0.001$).