

SUPPORTING INFORMATION

PALAEOECOLOGY OF A BILLION YEAR OLD NON-MARINE CYANOBACTERIUM FROM THE TORRIDON GROUP AND NONESUCH FORMATION

by PAUL K. STROTHER *and* CHARLES H. WELLMAN

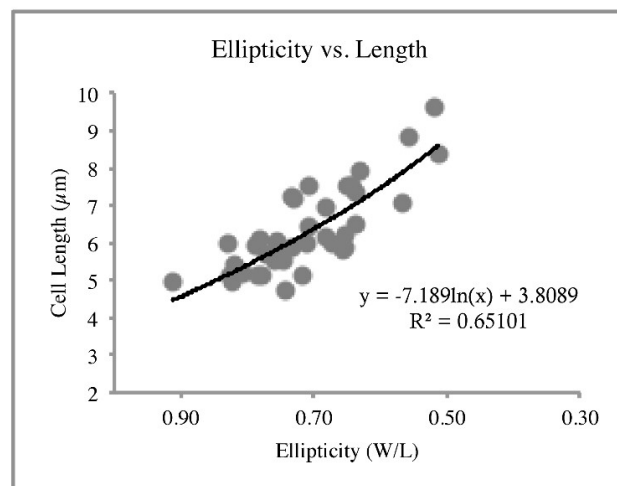
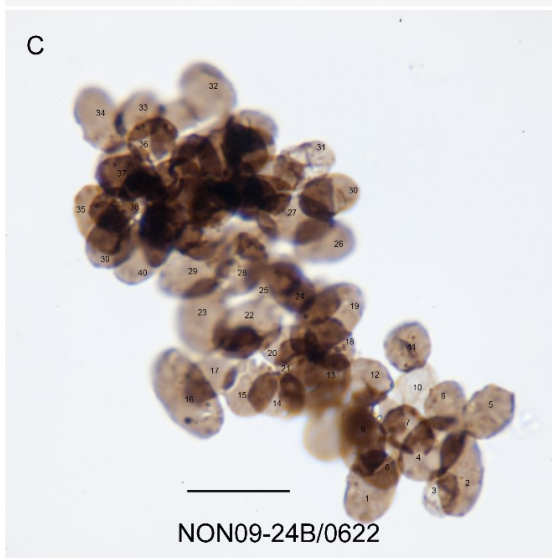
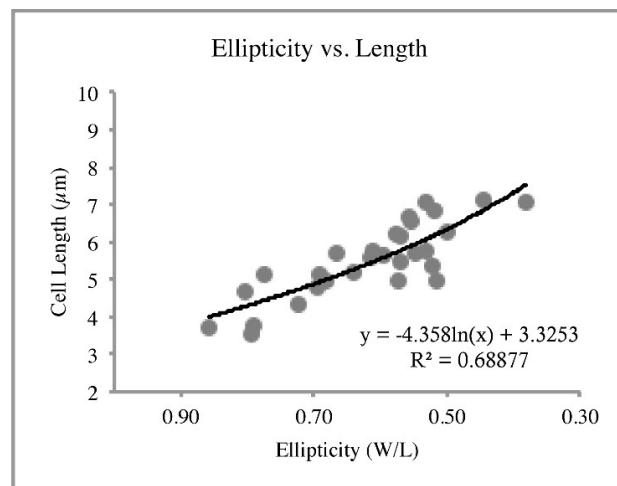
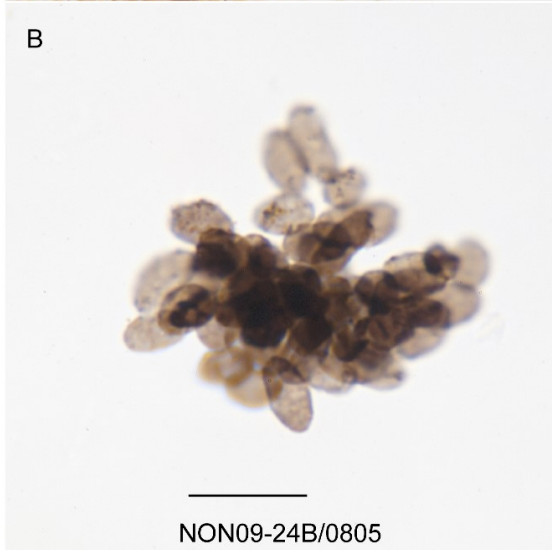
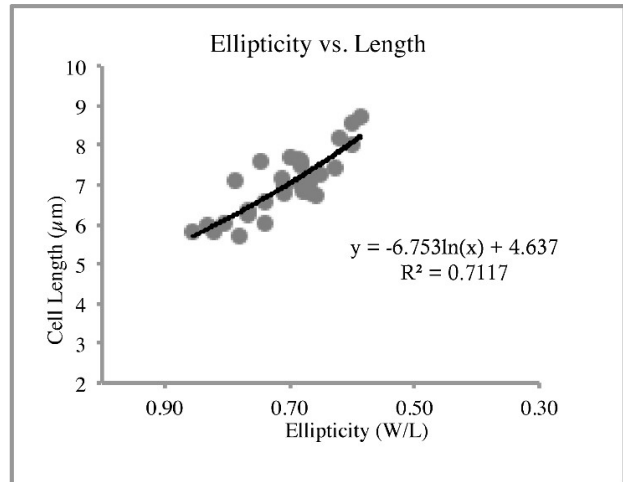
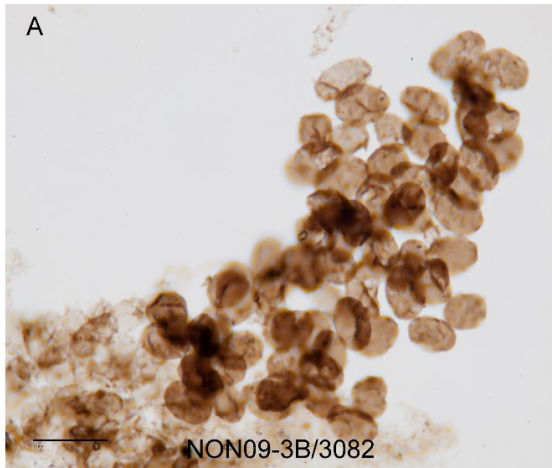


FIG S1. Three populations of *E. lacustrina* with their corresponding size data. A, population from sample NON09-24B with corresponding plot of length vs ellipticity (length/width). B, another population from sample NON09-24B with corresponding plot of length vs ellipticity (length/width). C, population from sample NON09-3B with corresponding plot of length vs ellipticity (length/width).