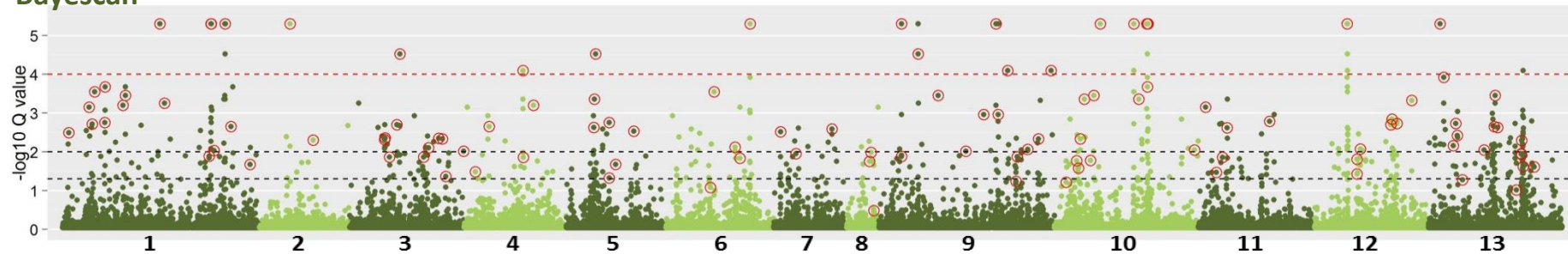


**SNPs to discriminate different classes of hybrid between wild Atlantic salmon and aquaculture escapees: Supplementary Figures.**

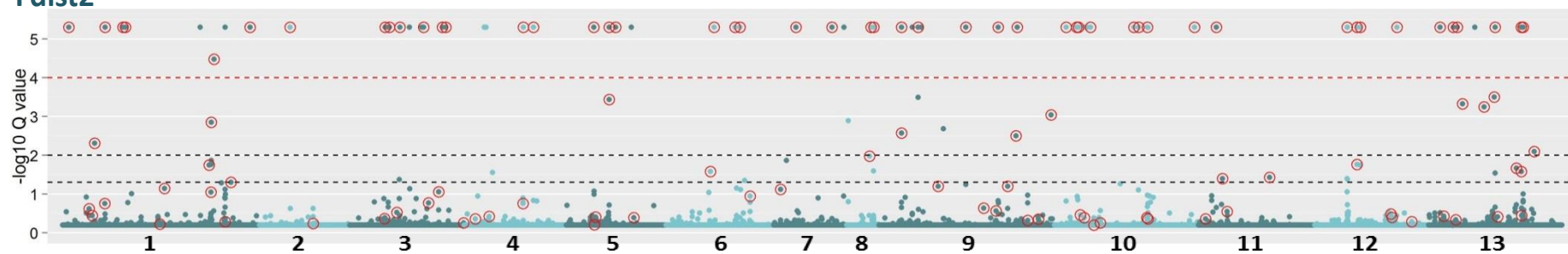
**Figure S2:** Significance of  $F_{st}$  outliers for the comparison between the combined wild fish and combined aquaculture escapee samples. Outliers were identified using two different approaches (Bayescan & Fdist2). The 199,297 SNPs are ordered by position on the genome, with chromosome number indicated along the x axis. Black dotted lines and red dotted line indicate a q value of 0.05, 0.01 and 0.0001 respectively. Q values of zero were converted to 0.000005 to allow representation on a  $-\log_{10}$  scale. The 200 SNPs used for hybrid class discrimination are circled in red.

Figure S2

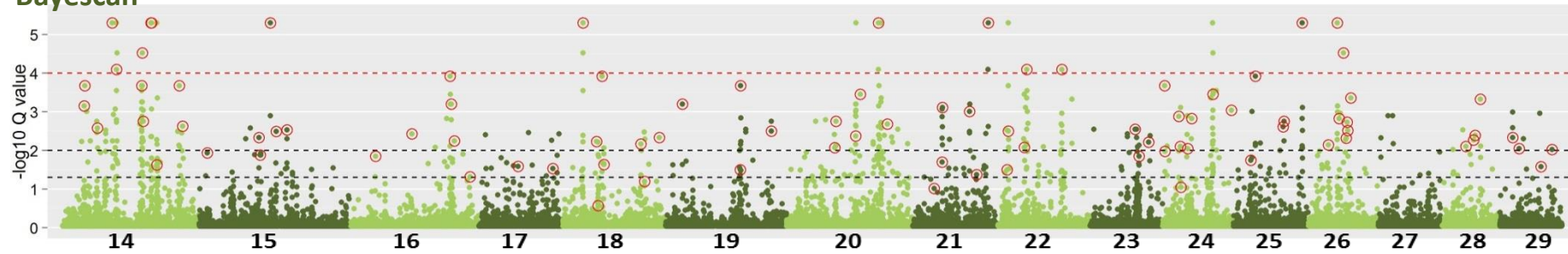
Bayescan



Fdist2



Bayescan



Fdist2

