

Supplementary Material: $1\alpha,25(\text{OH})_2\text{D}_3$ Suppresses the Migration of Ovarian Cancer SKOV-3 Cells through the Inhibition of Epithelial–Mesenchymal Transition

Yong-Feng Hou, Si-Hai Gao, Ping Wang, He-Mei Zhang, Li-Zhi Liu, Meng-Xuan Ye, Guang-Ming Zhou, Zeng-Li Zhang and Bing-Yan Li

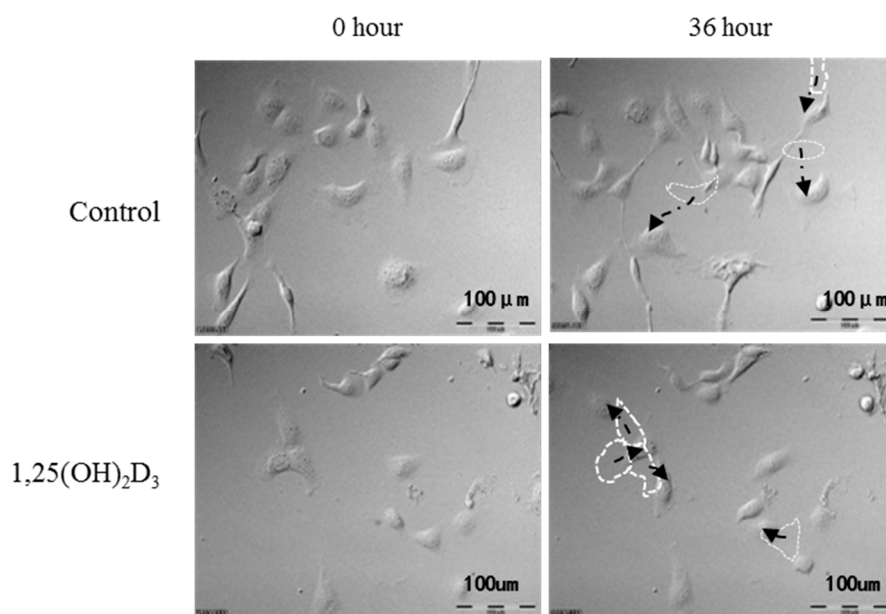


Figure S1. $1\alpha,25(\text{OH})_2\text{D}_3$ slowed down motion tracking of SKOV-3 cells compared with control (Arrows refer to the movement track of SKOV-3 cells).

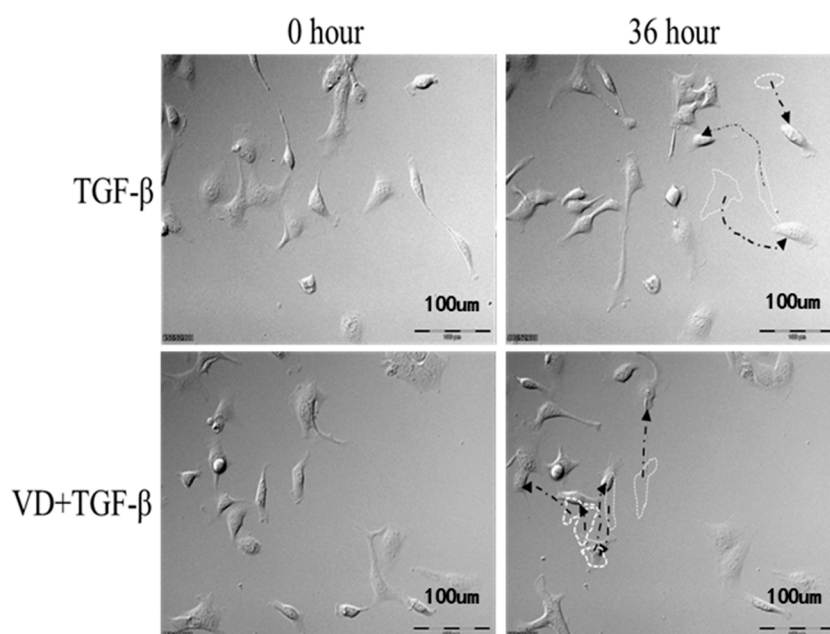


Figure S2. $1\alpha,25(\text{OH})_2\text{D}_3$ shortened the motion distance of SKOV-3 cells exposed to TGF- β 1 (Arrows refer to the movement track of SKOV-3 cells).