

Supplemental Material:

**Oligoclonal bands in MS reactive against two
herpesviruses and association with MRI findings**

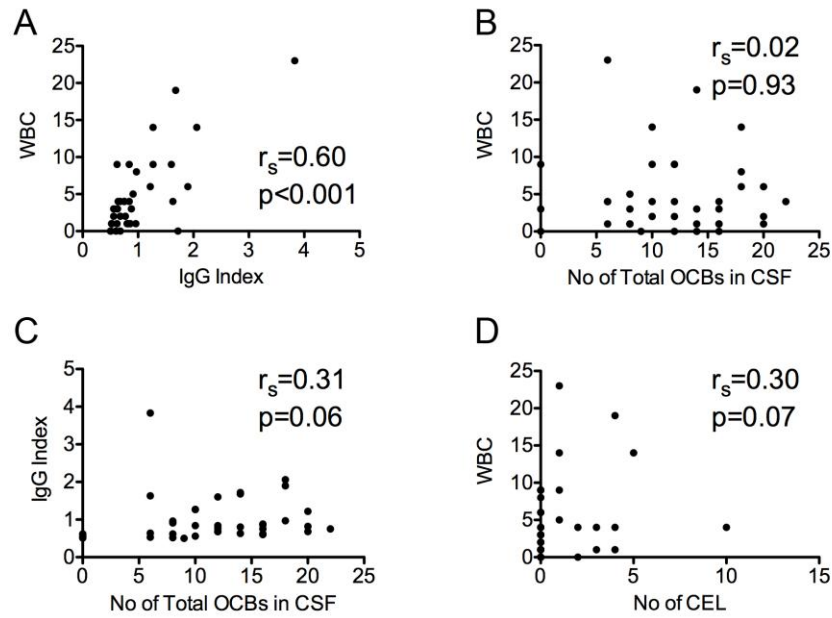
Virtanen JO, Wohler J, Fenton K, Reich DS, Jacobson S

Contents:

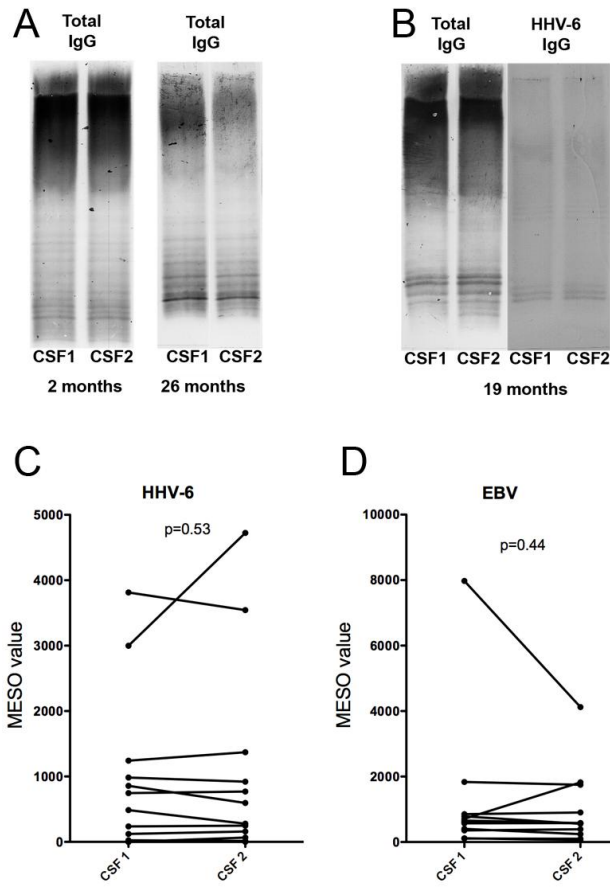
Suppl Table 1. CSF findings of OIND patients	2
Suppl Fig 1.	2
Suppl Fig 2.	3
Suppl Fig 3.	3

Suppl Table 1. CSF findings of OIND patients.

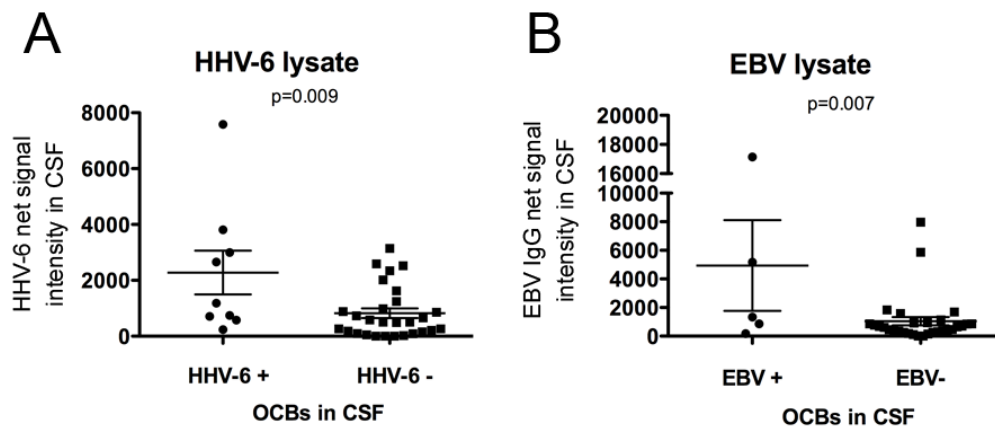
Code	OCB	WBC	IgG Index	Diagnosis
1	+	16	2.49	unknown
2	+	4	0.51	possible ADEM
3	+	8	1.28	HAM
4	-	3	0.50	HAM
5	+	N/A	N/A	HAM
6	+	N/A	1.11	HAM
7	+	10	0.87	HAM
8	+	31	0.65	HAM
9	+	130	N/A	Autoimmune Encephalitis
10	+	2	0.58	Autoimmune Encephalitis
11	+	0	N/A	Autoimmune Encephalitis
12	+	3	N/A	Autoimmune Encephalitis
13	+	6	N/A	Autoimmune Encephalitis
14	+	99	N/A	Autoimmune Encephalitis
15	+	10	N/A	Autoimmune Encephalitis



Suppl Fig 2.



Suppl Fig 2.



Suppl Fig 3.