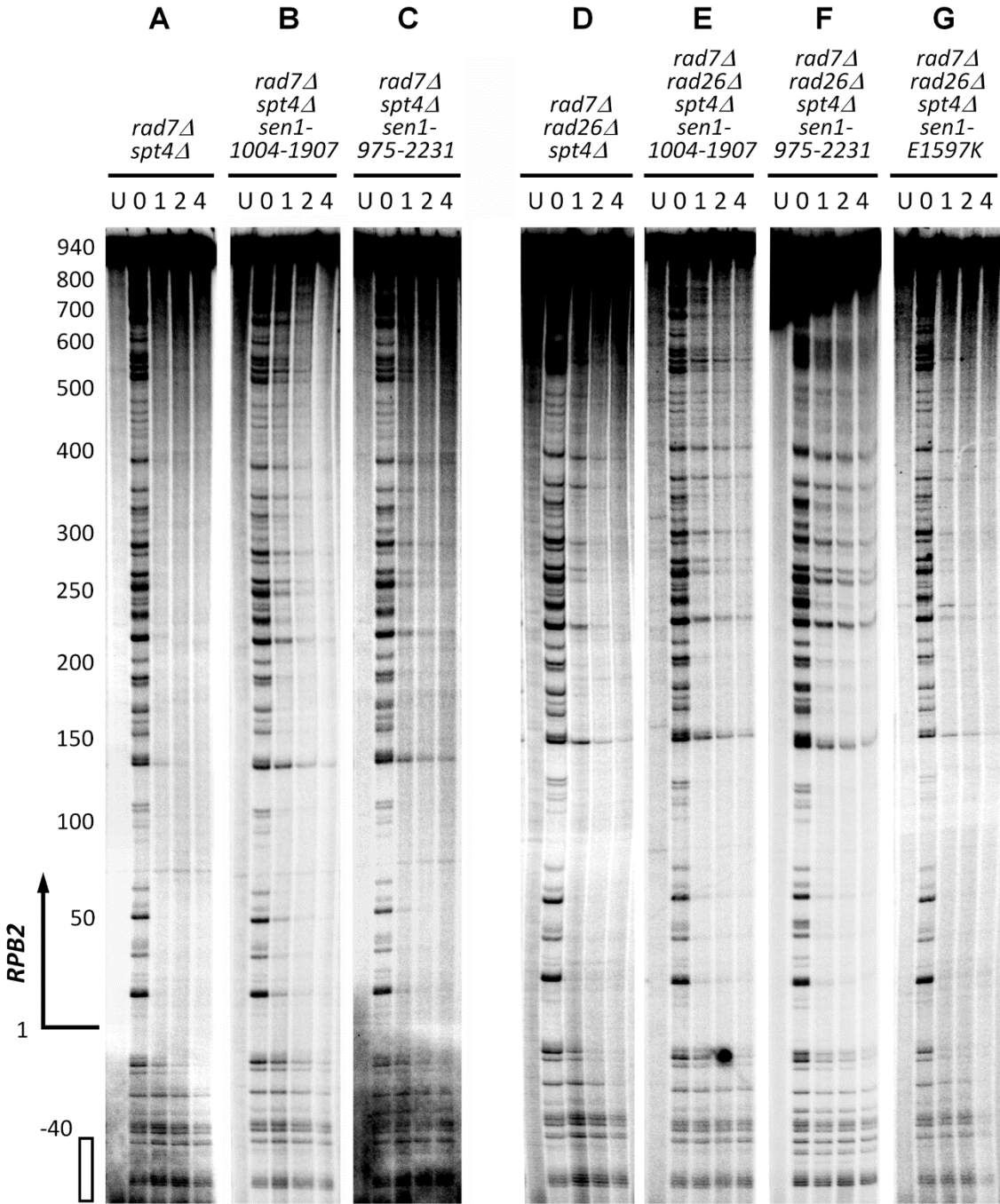


**Supplementary Figure S1.** DNA sequencing gels showing repair of CPDs in the 1.1 kb *Dra*I fragment of the transcribed strand of the *RPB2* gene in *rad7Δ* and *rad7Δ rad26Δ* cells expressing the wild type and different *Sen1* mutants. Samples were from unirradiated (U) and UV irradiated cells at different times (hrs) of repair incubation. Approximate nucleotide positions relative to the transcription start site of the *RPB2* gene are indicated on the left of (A). Open bar at the bottom-left of (A) marks the upstream region of the *RPB2* gene where only GGR but not TCR is operative and thus is not repaired in *rad7Δ* cells. The band intensities in this upstream region can be used to normalize signals in different lanes of the gels. Bracket on the left of (E) indicates the region where robust Rad26-independent TCR occurs.



**Supplementary Figure S2.** DNA sequencing gels showing repair of CPDs in the 1.1 kb DraI fragment of the transcribed strand of the *RPB2* gene in *rad7Δ spt4Δ* and *rad7Δ rad26Δ spt4Δ* cells expressing the wild type and different Sen1 mutants. See Supplementary Figure S1 for more explanations of the labels.