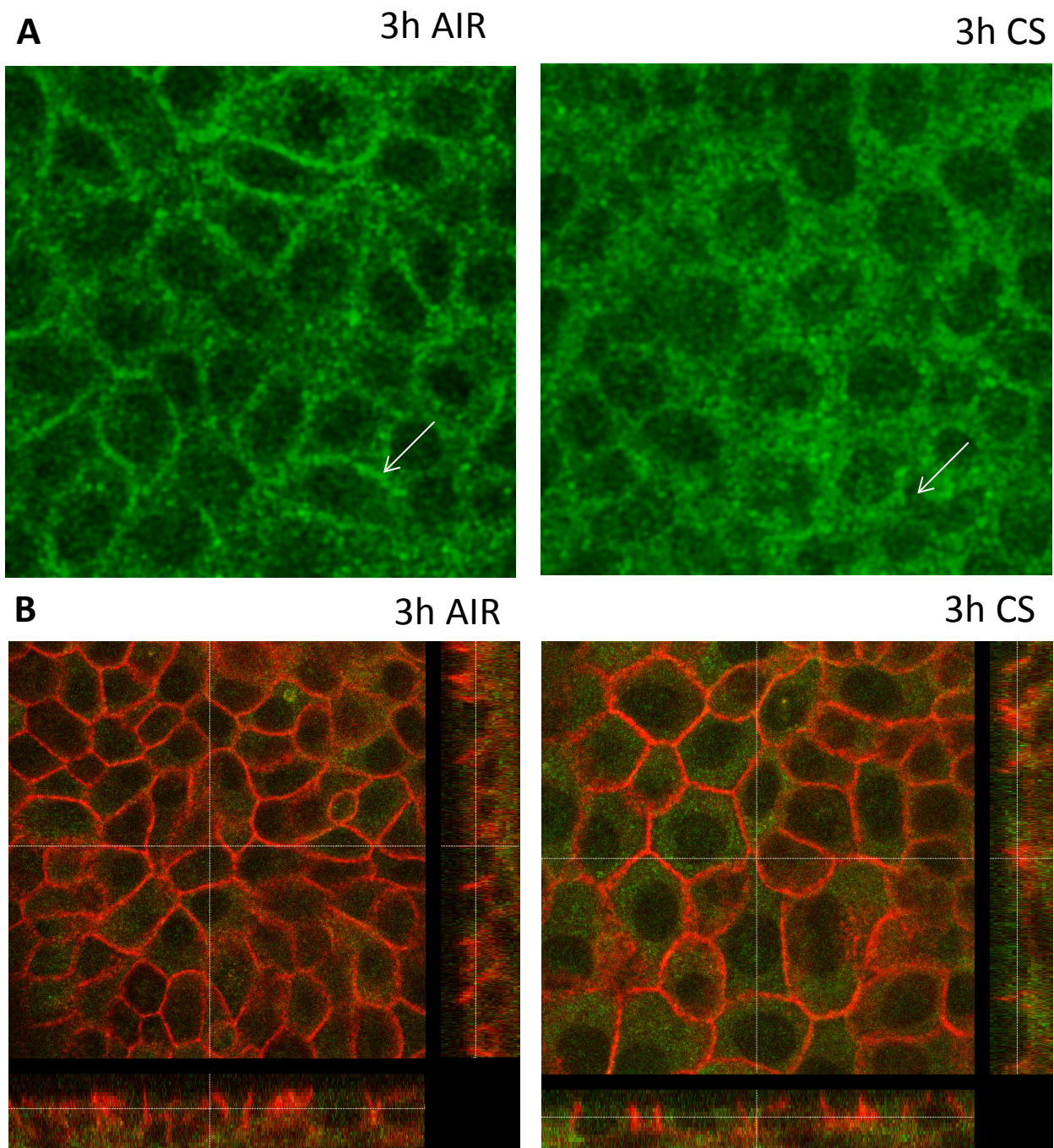


Supplementary Figure S2.

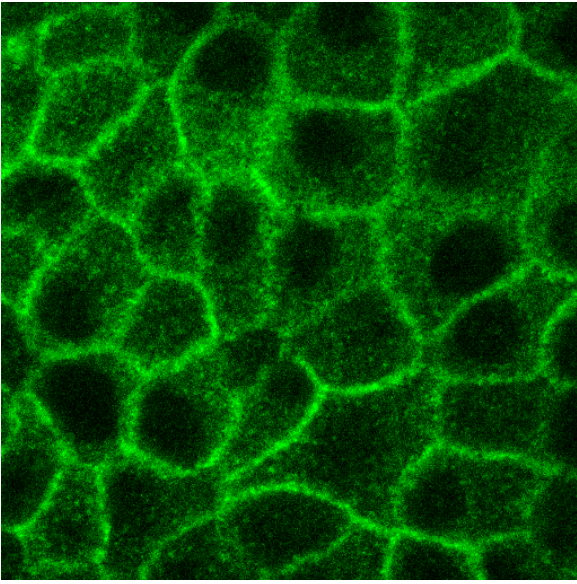
Lateral EGFR in ALI-PBEC, internalized after CS treatment. ALI-PBEC cultured under basal conditions, including (EGF and PBE) were treated with air or CS as described in the methods section. **A:** lateral EGFR immune fluorescence signal (green) becomes more diffuse three hours after CS treatment **B:** Lateral E-cadherin (red) illustrates the partial cytoplasmic localisation of EGFR. **C:** This is confirmed in a separate experiment, after 10 minutes exposure to air or CS, with three separate filters each.



EGFR- green, E-CAD – red; 63x, 1.6 zoom

C

HBEC-ALI 10 minutes Air



HBEC-ALI 10 minutes

