

SUPPLEMENTAL MATERIAL

Figure S1. Results of functional connectivity analysis with the amygdala seed region of interest (ROI) without the use of global signal regressor. Note: Top panel (A-C): Significant clusters of connectivity with left amygdala seed. (A) Within-group typical development (TD); (B) Within-group autism spectrum disorder (ASD); (C) Between-group difference ASD<TD. Bottom panel (D-F): Significant clusters of connectivity with right amygdala seed. (D) Within-group TD; (E) Within-group ASD; (F) Between-group difference ASD<TD. All significant clusters are $p < .05$, corrected; clusters are overlaid on representative 3.5-year-old structural brain image; shown in radiological convention (Left=Right).

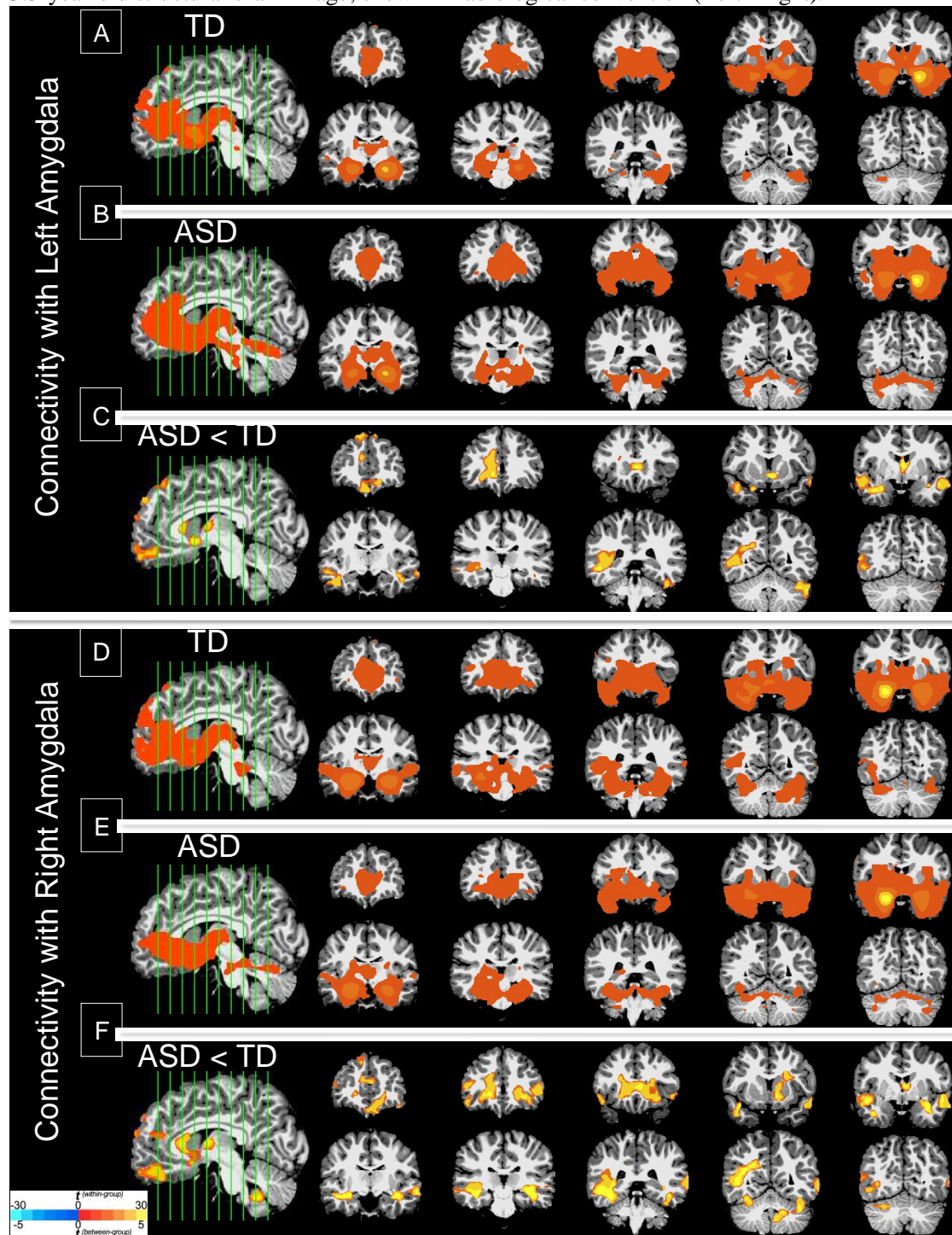


Figure S2. Results of functional connectivity analysis with the primary visual cortex seed region of interest (ROI) without the use of global signal regressor. Note: Significant clusters of connectivity with visual cortex seed. (A) Within-group typically developing (TD); (B) Within-group autism spectrum disorder (ASD); (C) Between-group difference ASD<TD. All significant clusters are $p < .05$, corrected; clusters are overlaid on representative 3.5-year-old structural brain image; shown in radiological convention (Left=Right).

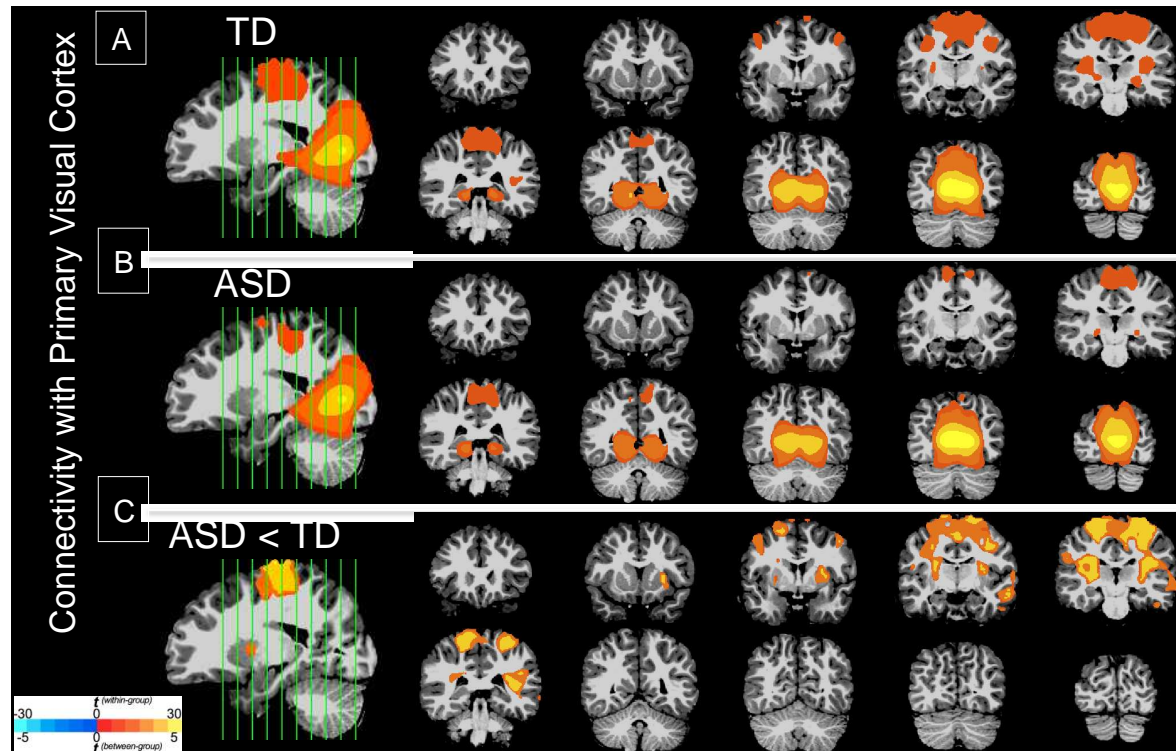


Table S1. Regions Showing Functional Connectivity With Left Amygdala for Within Typically Developing (TD), Within Autism Spectrum Disorder (ASD), and Group Comparison (TD>ASD)

ASD Group (n=43)							TD Group (n=29)						
Peak Location	#voxels	Peak t	x	y	z		Peak Location	#voxels	Peak t	x	y	z	
Additional regions [% volume of cluster]							Additional regions [% volume of cluster]						
L Insula Lobe	4.0	4109	36.91	-6	3	-9	L Temporal Pole	3.2	3350	30.67	-4	1	-9
L Anterior Cingulate Cortex	3.4						L Caudate Nucleus	3.1					
R Putamen	3.1						R Caudate Nucleus	3.1					
L Putamen	2.9						R ParaHippocampal Gyrus	3.0					
L Temporal Pole	2.9						L Anterior Cingulate Cortex	2.9					
R ParaHippocampal Gyrus	2.5						R Hippocampus	2.9					
R Caudate Nucleus	2.4						L Hippocampus	2.9					
L ParaHippocampal Gyrus	2.3						L Fusiform Gyrus	2.8					
L Hippocampus	2.2						R Temporal Pole	2.7					
L Caudate Nucleus	2.2						L ParaHippocampal Gyrus	2.6					
R Hippocampus	2.1						L Insula Lobe	2.3					
L Inf. Temporal Gyrus	2.0						L Cerebellum	2.2					
L Fusiform Gyrus	2.0						R Anterior Cingulate Cortex	2.0					
R Fusiform Gyrus	75.1	6	5.56	41	-45	-13	R Fusiform Gyrus	65.0	12	5.38	33	-47	-19
R Inf. Temporal Gyrus	8.7						R Cerebellum	35.0					
R Cerebellum	100.0	4	5.14	31	-62	-31	R Cerebellum	100.0	10	5.88	27	-66	-28
L Middle Occipital Gyrus	100.0	3	5.11	-25	-96	3	L Sup. Medial Gyrus	100.0	4	5.52	-8	44	52
TD>ASD Comparison													
Peak Location	#voxels	Peak t	x	y	z								
Additional regions [% volume of cluster]													
R Sup. Medial Frontal Gyrus^a	21.9	523	5.07	12	44	19							
R Sup. Frontal Gyrus	13.9												
R Anterior Cingulate Cortex	10.7												
L Sup. Medial Frontal Gyrus	6.3												
L Sup. Frontal Gyrus	4.7												
R Sup. Orbital Frontal Gyrus	3.0												
R Inf. Frontal Gyrus	2.5												
R Middle Frontal Gyrus	2.2												
R Middle Temporal Gyrus	32.0	580	4.49	47	-27	-3							
R Sup. Temporal Gyrus	16.1												
R Inf. Temporal Gyrus	4.4												
R Temporal Pole	4.3												
R Hippocampus	3.3												
L Middle Temporal Gyrus	45.3	149	4.17	-48	-10	-13							
L Sup. Temporal Gyrus	10.6												
L Hippocampus	6.0												
L Temporal Pole	4.7												
L Middle Orbital Gyrus	28.2	133	4.06	-4	50	-14							
L Rectal Gyrus	16.1												
R Rectal Gyrus	14.6												
R Mid Orbital Gyrus	8.3												
L Sup. Orbital Gyrus	7.3												
L Inf. Frontal Gyrus	5.5												
R Sup. Orbital Gyrus	2.0												
L Cerebellum	58.3	116	4.45	-45	-48	-28							
L Inf. Temporal Gyrus	28.0												
L Fusiform Gyrus	11.7												
L Caudate Nucleus	14.0	59	4.11	-2	2	4							
L Thalamus	2.6												
L Olfactory cortex	2.0												
Cerebellum	85.7	51	3.49	-9	-49	-43							
^a Denotes cluster reported in behavior correlations.													

