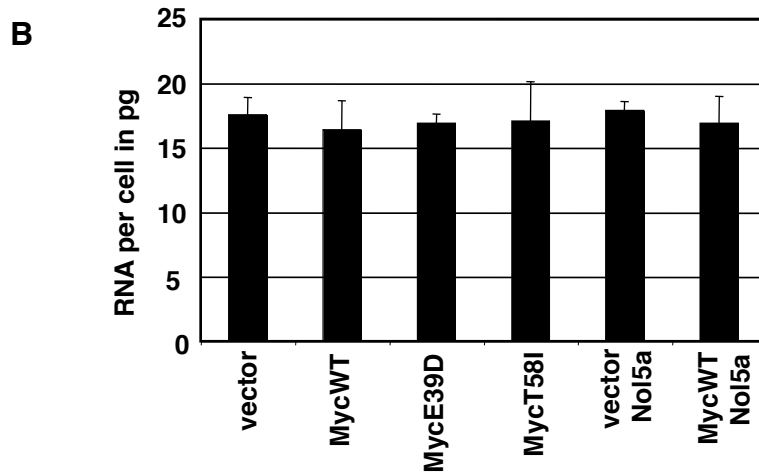
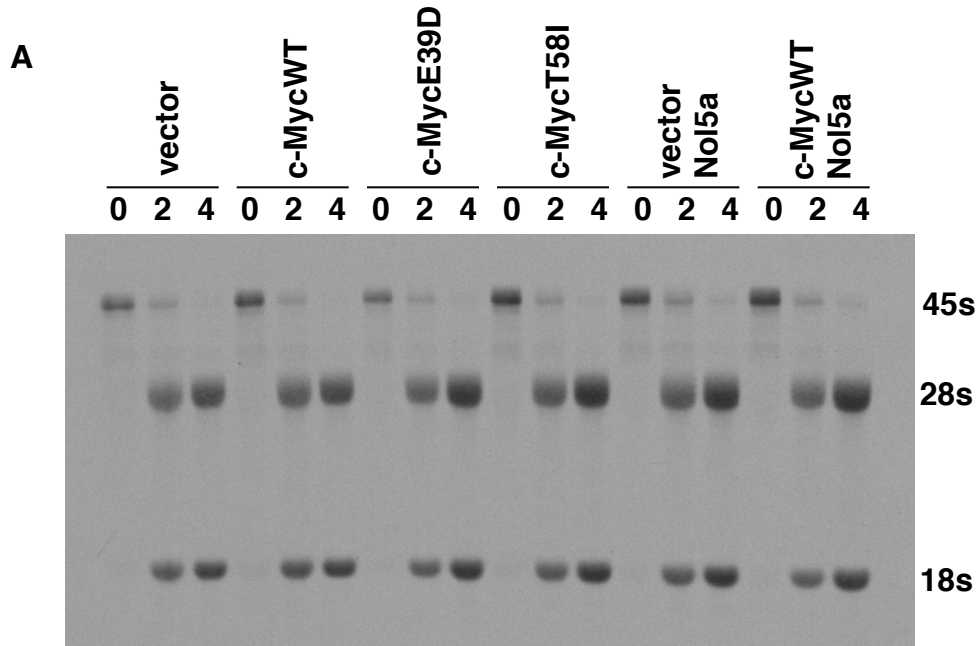


Supplemental Figure 4



Supplemental Figure 4. Rate of rRNA synthesis and processing. A) Rat1a cells expressing the indicated Myc protein or Noli5a were pulsed with ^3H -uridine for 30 min, followed by chase with cold uridine for 0, 2, 4hrs. RNA for each time point was run on a formaldehyde agarose gel and blotted on the Hybond-N membrane. Membrane was sprayed with EN3HANCE and exposed to film. B) Log-phase cell lines were counted, RNA was extracted and quantitated and RNA per cell was calculated. Total counts were obtained in 2 independent experiments.